

Timer Drain Valves

For Compressed Air Systems



General Description:

Parker Fluid Control's Timer Drain Valves automatically eliminate condensate that has collected up in compressed air lines.

These timers can be used on a wide variety of our 2-way solenoid Normally Closed valves as well as 3-way valves for piloting our larger Angle Body control valve, using DIN 43650A / ISO 440 coils.

Timers are available to control both the duration and frequency of the valves energized period during which condensate is evacuated.

Installation:

Preferred orientation is with the coil vertical and upright.

Standard Materials of Construction:

Body – Brass
Seals – FKM
Plunger/Stop – Stainless steel (430F)
Sleeve – Stainless steel (304/305)
Springs – Stainless steel (18-8)
Shading Ring – Copper

Electrical Characteristics:

Standard Voltages

AC –24-240/50-60Hz
DC –24-240 VDC

Coil Classification

Class F Standard
Class H Available

Parker Hannifin Corporation
Fluid Control Division
1 800 825 8305 (1 800 Valve05)
www.parker.com/fcd



Specialty

Agency Approvals

- UL listed and CSA certified
- Meets NEMA Type 4X requirements
- CE Certification

Maximum Ambient Temperature

- -23° F to 122°F for Timer
- See Product Page for Valve Temperature Range

Applications:

- Air Compressors
- Air Drying Systems
- Refrigerated Dryer Systems

Key Features:

- Selectable Timer Ranges for duration and frequency to precisely match contaminant load
 - 0.5 - 10 seconds ON
 - 0.5 - 45 minutes OFF
- Integral Strainer available to prevent contaminant from affecting valve operation
- Manual reset & test button
- LED's to indicate operation
- Rated for Continuous Duty

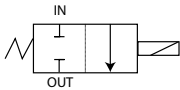
2-Way Pilot Operated Brass Timer Drain Valves – Normally Closed, FKM Seals

| Port Size NPT | Orifice Size (inch) | CV Factor | Operating Pressure Differential (PSi) | | Max. Fluid Temp. (F) | Pressure Vessel Number** | |
|------------------|---------------------------|--------------|---------------------------------------|------------|-------------------------------|--------------------------|----------------------|
| | | | Min.* | Maximum | | | |
| | | | | AC Ratings | | | DC Ratings |
| | | | 10 watt | 10 watt | | | |
| 1/4" | 7/16 | 1.75 | 3 | 150 | 60 | 210 | 7321KBN2NF00N0D1DMxx |
| 1/4" | 7/16 | 1.75 | 3 | 300 | 45 | 210 | 7321KBY61640N0D1DMxx |
| 3/8" | 7/16 | 2.5 | 3 | 300 | 45 | 210 | 7321KBY63200N0D1DMxx |
| 1/2" | 7/16 | 2.7 | 3 | 300 | 45 | 210 | 7321KBY6320AN0D1DMxx |

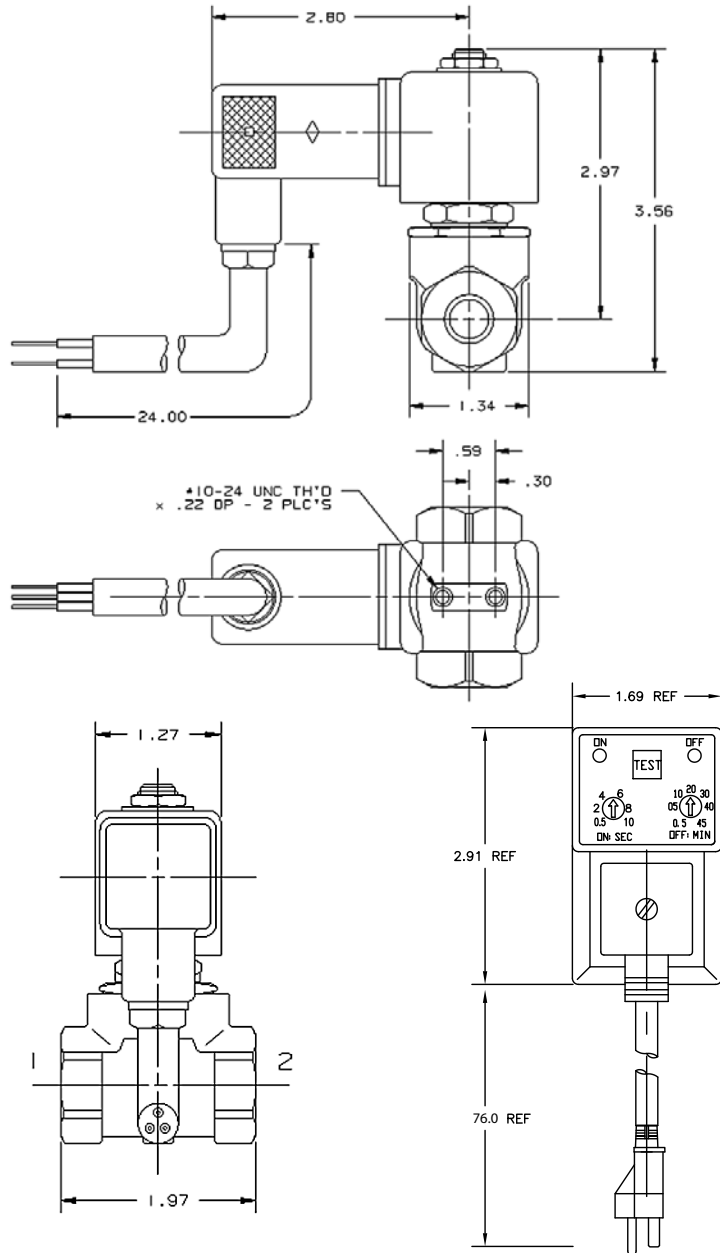
*Pilot operated valves require the minimum pressure differential specified for proper valve operation.

** Replace 'xx' at the end of part number with: 'B2' for 24/60, 'P3' for 120/60-110/50, 'Q3' for 240/60-220/50, 'C2' for 24VDC and 'B6' for 120VDC voltages. Consult Factory for List pricing and minimum order quantities that may apply for certain voltages.

Valve Reference D60



2-Way Normally Closed
 Port Identification:
 Flow arrow on body
 indicates flow direction.
 Ports are not marked.



Specialty



D76

www.comoso.com

Parker Hannifin Corporation
Fluid Control Division
 1 800 825 8305 (1 800 Valve05)
www.parker.com/fcd