

# Fuel Selector Manifolds

6 Port Manifold with Manual Override and  
5 PSI Check Valve



## General Description:

Parker Fluid Control's Fuel Selector Valve Manifolds are designed for electrically controlled remote tank selection in application with multiple diesel fuel tanks.

Unique in design, the Fuel Selector Valve Manifold permits continuous engine function during tank switching from a safe and convenient location.

These innovative manifold solutions include 2-way, normally closed solenoid operators that are rated for fuel safety shut-off and feature a manual operator (standard) for system operation during a power outage.

### Installation:

Valves can be mounted in any position.

### Standard Materials of construction:

Body – Anodized Aluminum  
Seals – Fluorocarbon (FKM)  
Sleeve – 300 Series Stainless  
Plunger/Stop – 430 FR  
Stem – Stainless Steel

### Electrical Characteristics:

#### Standard Voltages

DC - 12, 24

#### Coil Classification:

Class F standard (10 watt)

#### Maximum Ambient Temperature:

176° F



Specialty

### System Specifications:

- Six Port Diesel Manifolds
  - Four 2-Way normally closed operators ensure fuel shutoff and return flow.
  - 5 PSI (0.34 bar) check valve included with manifold to be installed between engine supply and return ports.

### Applications:

- Marine/mobile applications
  - Multiple tank selection
  - Fuel polishing (marine)
- Power generation
  - Multiple tank selection

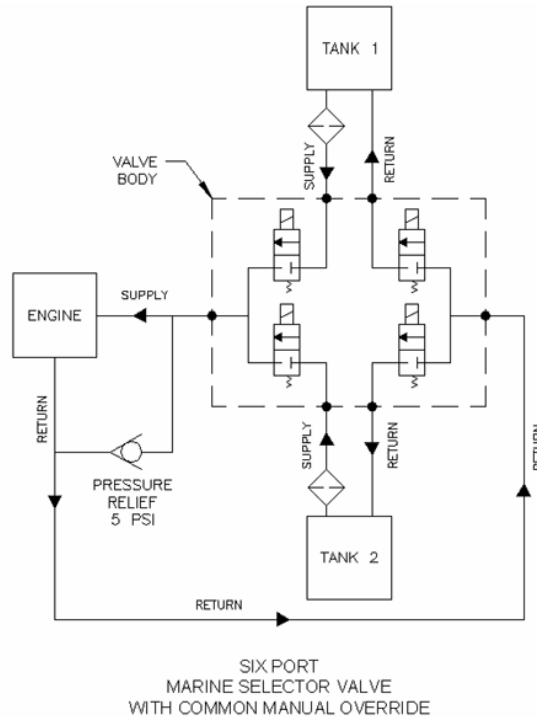
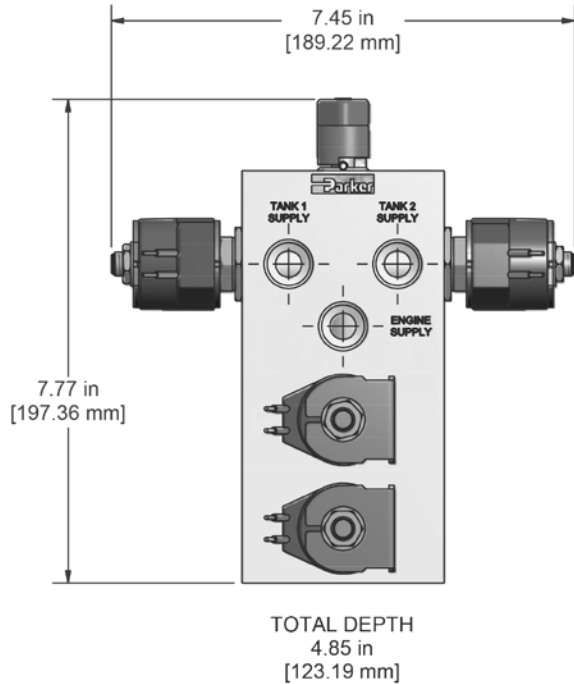
### Mechanical Characteristics:

- Recommended Filtration: 150 micron (not included)
- Flow Capacity:
  - 180 GPH - 6 port diesel



ENGLISH UNITS					METRIC UNITS				
Port Size NPT	Orifice Size (in.)	Cv Factor	Operating Pressure Differential PSI		Complete Valve Number*	Orifice Size (mm)	Kv Factor (m <sup>3</sup> /h)	Operating Pressure Differential (bar)	
			Min.	Max.				Min.	Max.
1/2	7/16	2.25	0	3	7121Z027F1J111xx	11.1	1.935	0	0.207

\*In place of 'xx' in the part number, use 'C1' for 12VDC or 'C2' for 24VDC voltages.



Dimensional Drawings for the 6 port Fuel Selector Manifold

Schematic shows the ease of incorporating the Fuel Selector Manifold into your system

**Maximum Ambient Temperature:**

176°F

Per ABYC H23 (Diesel Fuel Systems) and ABYC H-24 (Gasoline Fuel Systems)

**Maximum Fluid Temperature:**

71°C or 160°F

**Current Draw:** .83A each coil

**Power Consumption:** 10 watts each coil

**Coil:** Molded Class F coil with 18" leads

**Electrical Enclosure:** External Yoke

**Body Material:** Aluminum

**Seal Material:** FKM

For equivalent 3 port versions of the valve. For gasoline service, please contact Parker Hannifin Fluid Control Division @ 1800-VALVE05.



Specialty