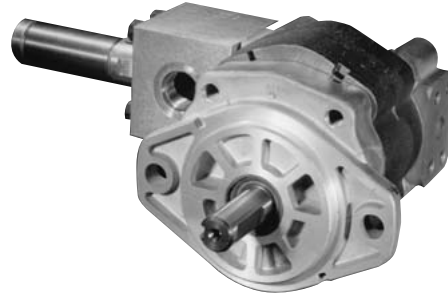


**Specifications
 for DVP16 Series**

Description Dry Valve Pumps
 Flow Range To 20 GPM (75.7 LTR) @ 1200 RPM
 Displacements To 3.902 C.I.R. (63.94 CC's/REV.)
 Maximum Pressure to 3000 PSI (207 BAR)
 Maximum Speed to 3600 RPM
 Rotation A or C
 Bearings Journal
 Construction Aluminum and Cast Iron

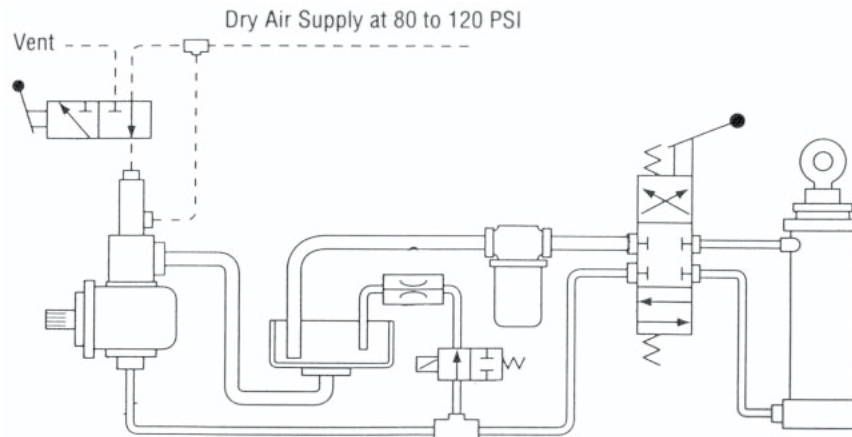


Performance Data

Pump Model	Section Size	Displacement/Revolution (Theoretical)					Maximum Pressure		Maximum Speed
		US Gallons	Cubic Inches	Liters	Cubic Centimeters	Imperial Gallons	PSI	BAR	RPM
DVP16	45	.0038	.878	.0144	14.388	.003	3000	207	3600
DVP16	65	.0055	1.270	.0208	20.812	.005	3000	207	3600
DVP16	85	.0072	1.663	.0273	26.760	.006	3000	207	3400
DVP16	100	.0085	1.964	.0321	32.184	.007	3000	207	3300
DVP16	115	.0097	2.241	.0367	36.723	.008	3000	207	3100
DVP16	150	.0127	2.934	.0481	48.080	.011	3000	207	2800
DVP16	180	.0152	3.511	.0575	57.535	.013	2200	152	2500
DVP16	200	.0169	3.902	.0639	63.942	.014	2000	138	2200

All data based on SAE 10W oil at 150°F. Available with Viton® Seals.
 Consult factory for application of tandem units. Maximum speed in dry mode is 3600 RPM.

CAUTION: "Inlet vacuum" should not exceed 5" Hg at normal operating speed and temperature. Operation of pumps in excess of 5" Hg requires factory approval.



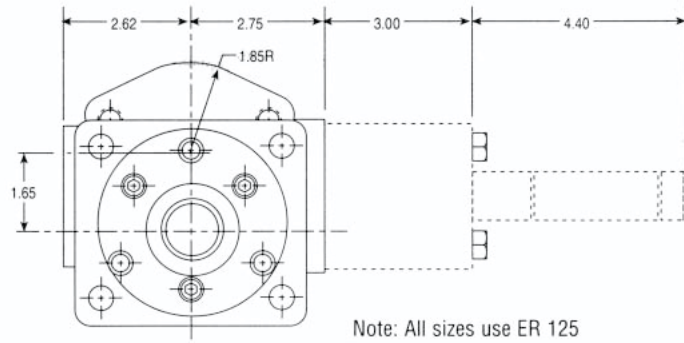
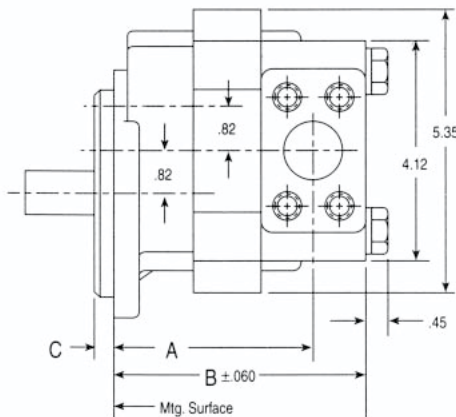
Typical Dry Valve System

PUMP SIZES	FLANGE TYPE									
	E, G & J		N		S & T		D		F	
	A	B	A	B	A	B	A	B	A	B
DVP16 45	118.3 (4.66)	144.0 (5.67)	88.1 (3.47)	113.7 (4.48)	132.5 (5.22)	158.2 (6.23)	89.9 (3.54)	115.5 (4.55)	92.9 (3.66)	118.6 (4.67)
DVP16 65	123.9 (4.88)	149.6 (5.89)	93.7 (3.69)	119.3 (4.70)	138.1 (5.44)	163.8 (6.45)	95.2 (3.75)	121.1 (4.77)	98.5 (3.88)	124.2 (4.89)
DVP16 85	129.2 (5.09)	154.9 (6.10)	99.0 (3.90)	124.7 (4.91)	143.5 (5.65)	169.1 (6.66)	100.8 (3.97)	126.4 (4.98)	103.8 (4.09)	129.5 (5.10)
DVP16 100	133.3 (5.25)	159.0 (6.26)	103.1 (4.06)	128.7 (5.07)	147.5 (5.81)	173.2 (6.82)	104.9 (4.13)	130.5 (5.14)	107.9 (4.25)	133.6 (5.26)
DVP16 115	137.4 (5.41)	163.0 (6.42)	107.1 (4.22)	132.8 (5.23)	151.6 (5.97)	177.2 (6.98)	108.9 (4.29)	134.6 (5.30)	112.0 (4.41)	137.6 (5.42)
DVP16 150	146.8 (5.78)	172.4 (6.79)	116.5 (4.59)	142.2 (5.60)	161.0 (6.34)	186.6 (7.35)	118.3 (4.66)	144.0 (5.67)	121.4 (4.78)	147.0 (5.79)
DVP16 180	154.9 (6.10)	180.5 (7.11)	124.7 (4.91)	150.3 (5.92)	169.1 (6.66)	194.8 (7.67)	126.4 (4.98)	152.1 (5.99)	129.5 (5.10)	155.1 (6.11)
DVP16 200	160.2 (6.31)	185.9 (7.32)	130.0 (5.12)	155.7 (6.13)	174.4 (6.87)	200.1 (7.88)	131.8 (5.19)	157.4 (6.20)	134.8 (5.31)	160.5 (6.32)

Note: See P 16 Curves for Performance Data.

C DIMENSIONS		
FLANGE TYPE	MM	IN
D	6.3	(.250)
E	4.7	(.187)
F	—	—
G	6.3	(.250)
J	6.3	(.250)
N	9.5	(.375)
S	5.8	(.200)
T	5.8	(.200)

SAE 4-Bolt NPT Connectors are available.
 See Accessory Section



Note: All sizes use ER 125

Inch equivalents for millimeter dimensions are shown in (**).