



DC590+

Integrator Series

DC Drive

ENGINEERING YOUR SUCCESS.



DC integrator
590+series 2

Digital DC Drives

TWO-QUADRANT AND FOUR-
QUADRANT DRIVE TYPES

RATINGS TO
2700 Amps



DC590+ Integrator Series

PLUG-IN PERFORMANCE

35A
Chassis
(IP20)

Local/Remote Operator
Keypad

Tach Feedback
Card Location

Communications
TechBox Location

PC Configuration
Port

Quick-disconnect
Control & I/O Wiring



Easy-Access
Power Terminals

Snap together solutions for all applications



DC590+ Integrator Series

KEYPAD -

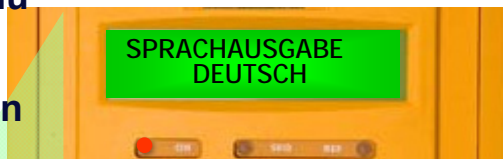
- Straight-forward 4-button menu structure
- Provides local control- even on networked systems
- Same keypad as on AC drives



KEEPS IT SIMPLE.

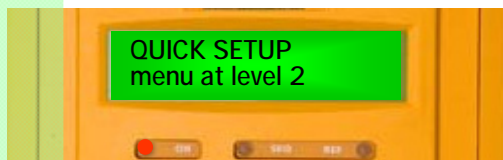
Local or Remote Mount

Backlit, 2-line, 32 Character display



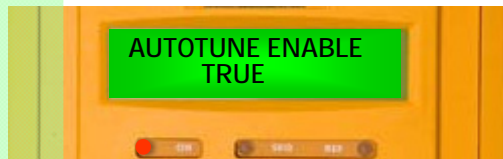
Multi-lingual plain language

English * French * German * Spanish * Italian



Quick set-up

Bypasses advanced features for simple applications



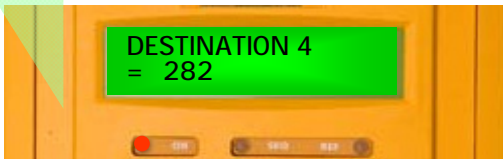
Autotune

Custom tunes drive for full torque without turning motor shaft



Customized screens

Customize to display application-specific engineering units



Easy Configuration

Interlink any function block to any other

Parameter Auto-Save – Save on the go!



DC590+ Integrator Series

TACH & ENCODER FEEDBACK CARDS

Using the exact same feedback cards as the original 590, the DC590+ provides unsurpassed flexibility.

Along with analog and encoder tach cards, two fiber optic tach cards are also available.

- *Analog Tachometer*
- *Encoder Feedback*
- *Microtach (acrylic fiber)*
- *Microtach (glass fiber)*

Slave speed following – second encoder block may be configured to follow an external encoder



DC590+ Integrator Series

FIELDBUS COMMUNICATIONS

From ProfiBus to DeviceNet, SSD Drives TechBoxes provide your communications solution. These simple plug-in modules connect you to a wide range of the most popular industry networks.



- *RS-485*
- *Ethernet*
- *DeviceNet*
- *ControlNet*
- *Profibus*
- *CANOpen*
- *LonWorks*
- *ModBus+*
- *LINK*

Connect to the SSD Drives LINK fiber optic network for real-time, deterministic drive control. The LINK TechBox unleashes a library of powerful macros for unparalleled drive system performance.

← *Hardwire I/O is unaffected by Networking!*



DC590+ Integrator Series

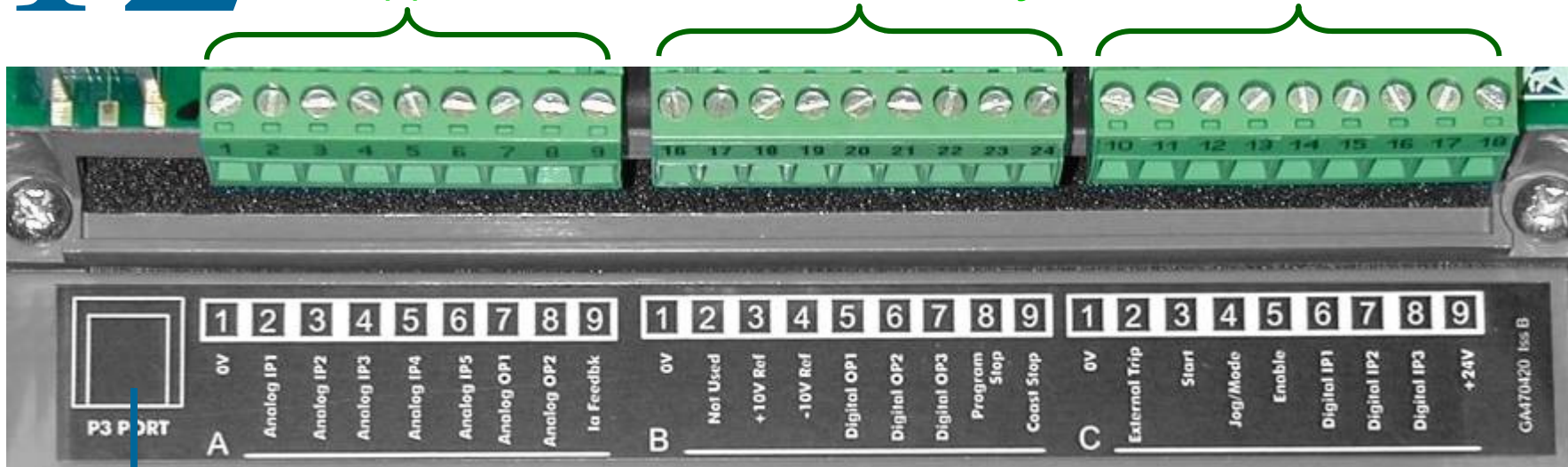
12bit

I/O To Spare

Not affected by communications options!

- 12bit (+ sign) analog resolution
- Configurable digital and analog I/O

(3) Quick disconnect blocks for easy maintenance



Programming
Port

- 5 analog inputs
- 2 analog outputs – short circuit protected
- 1 dedicated current output

- 3 digital outputs:
- 2 configurable outputs
- precision 10V bipolar supply
- program & coast stop inputs

- 5 digital inputs:
- 2 configurable inputs
- isolated 24V control supply



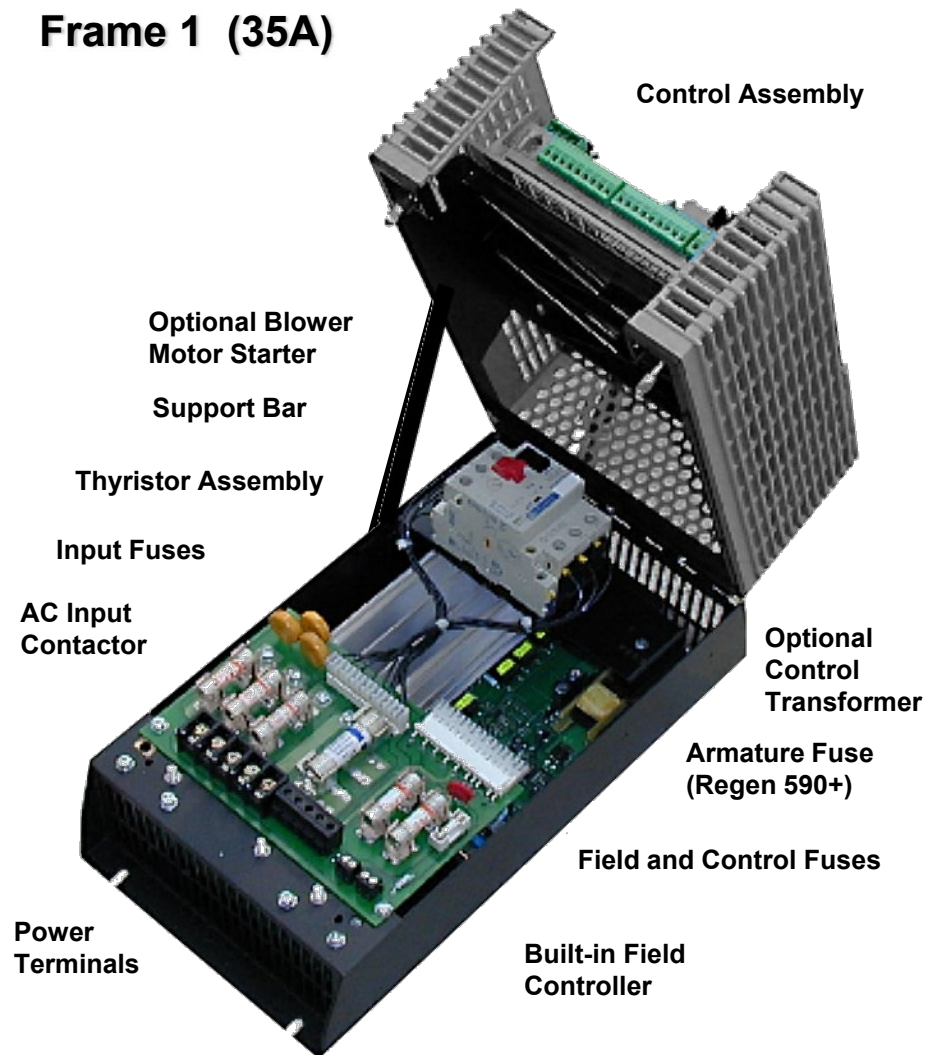
DC590+ Integrator Series

DRV

Your Complete Control Solution

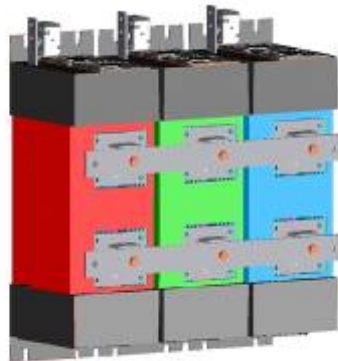
The task of sizing of control devices is eliminated by choosing the 590+ 'DRV' option. Fuses and contactor are power matched and integrated into the basic 590+ DRV package, with room for other common DC drive options.

Frame 1 (35A)



DC590+ Integrator Series

- ***New Size 6 unit***
 - **800/1000/1200 HP at 480VAC**
 - **1250A, 1600A, 1950A at 500VDC**
 - **690V models available**
 - **150% overload – 30 seconds**
 - **200% overload – 10 seconds**
 - ***Built-in fuses***
 - ***Built-in 60 amp field controller***
-
- **Modular design**
 - **Small footprint**



DC590+ Integrator Series

Savings with DRV built-in control devices !

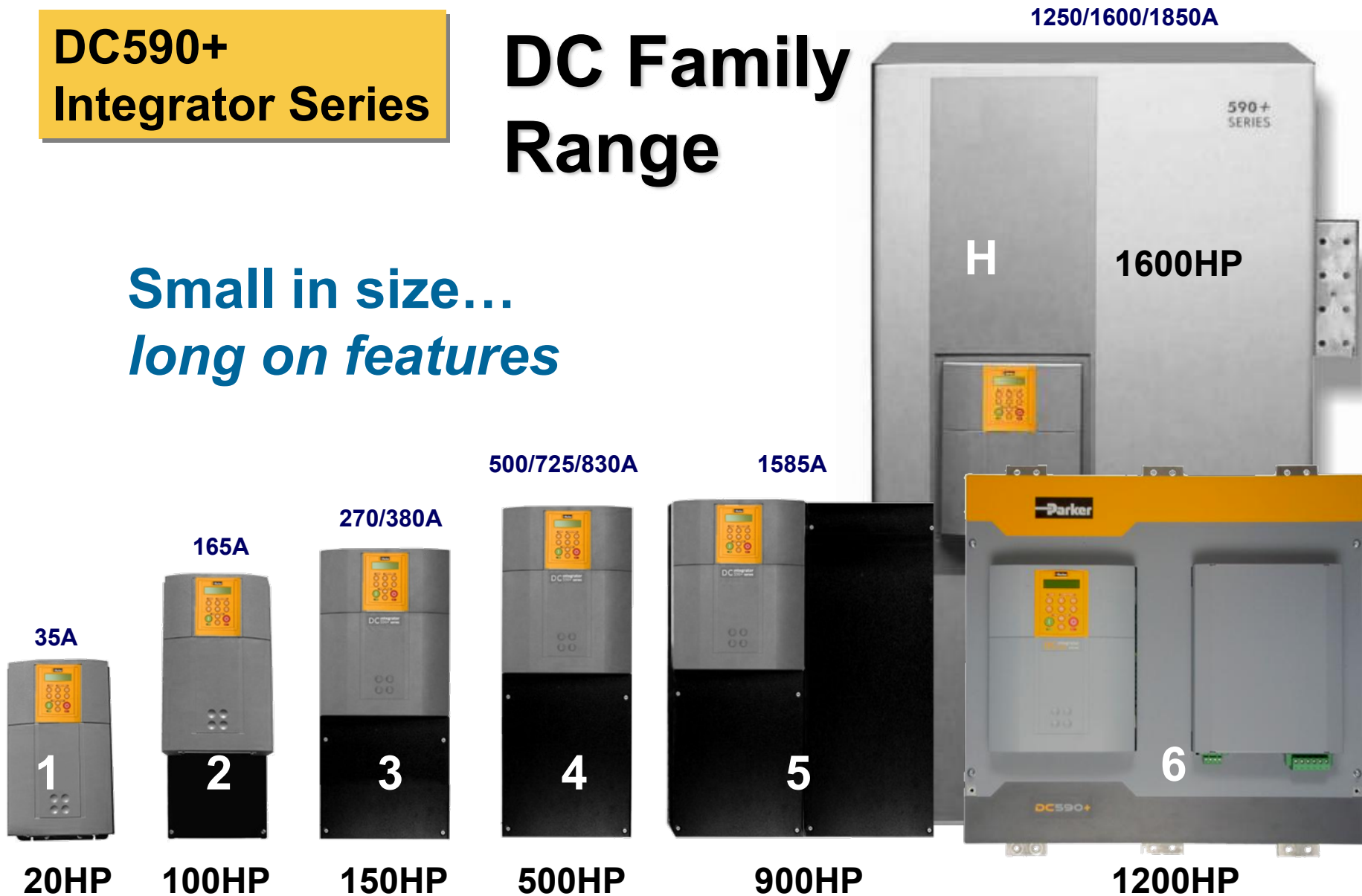


- Saves cabinet space
- Eliminates sizing control parts
- Simplifies mounting & wiring
- Improved appearance

DC590+ Integrator Series

DC Family Range

Small in size...
long on features

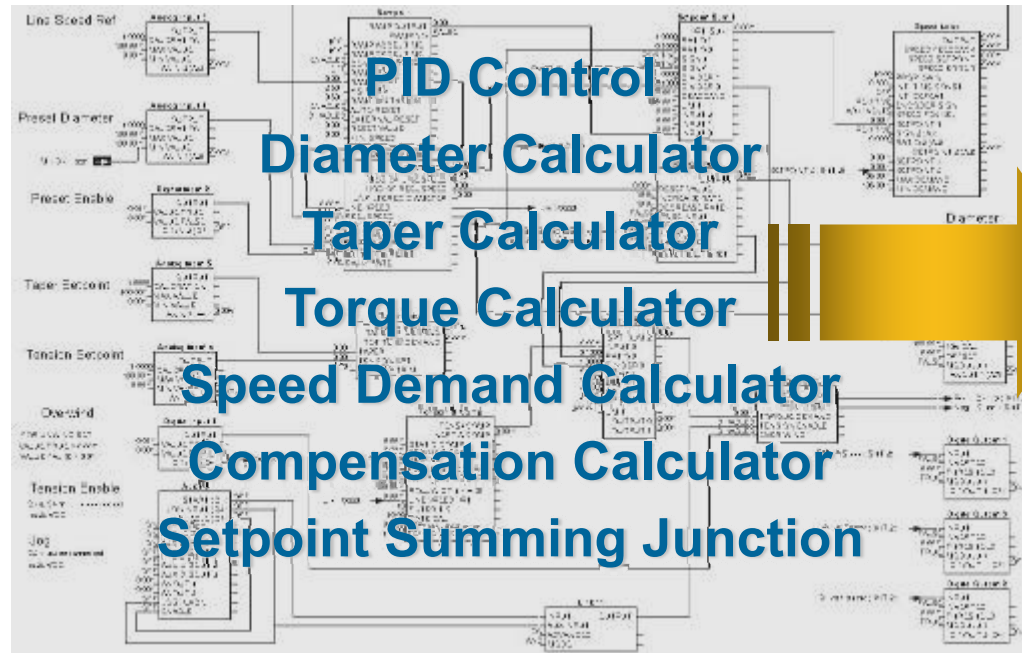


*MAX HP FOR EACH FRAME STATED AT MAXIMUM VOLTAGE
FRAMES 1, 2 & 3 AVAILABLE WITH BUILT-IN FUSING AND CONTACTORS

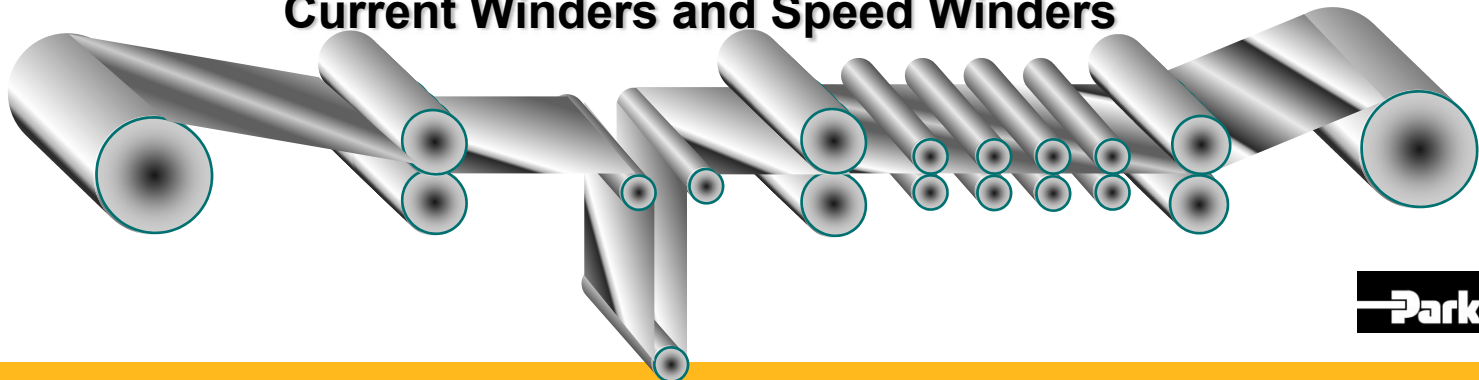


**DC590+
Integrator Series**

MACRO BLOCKS



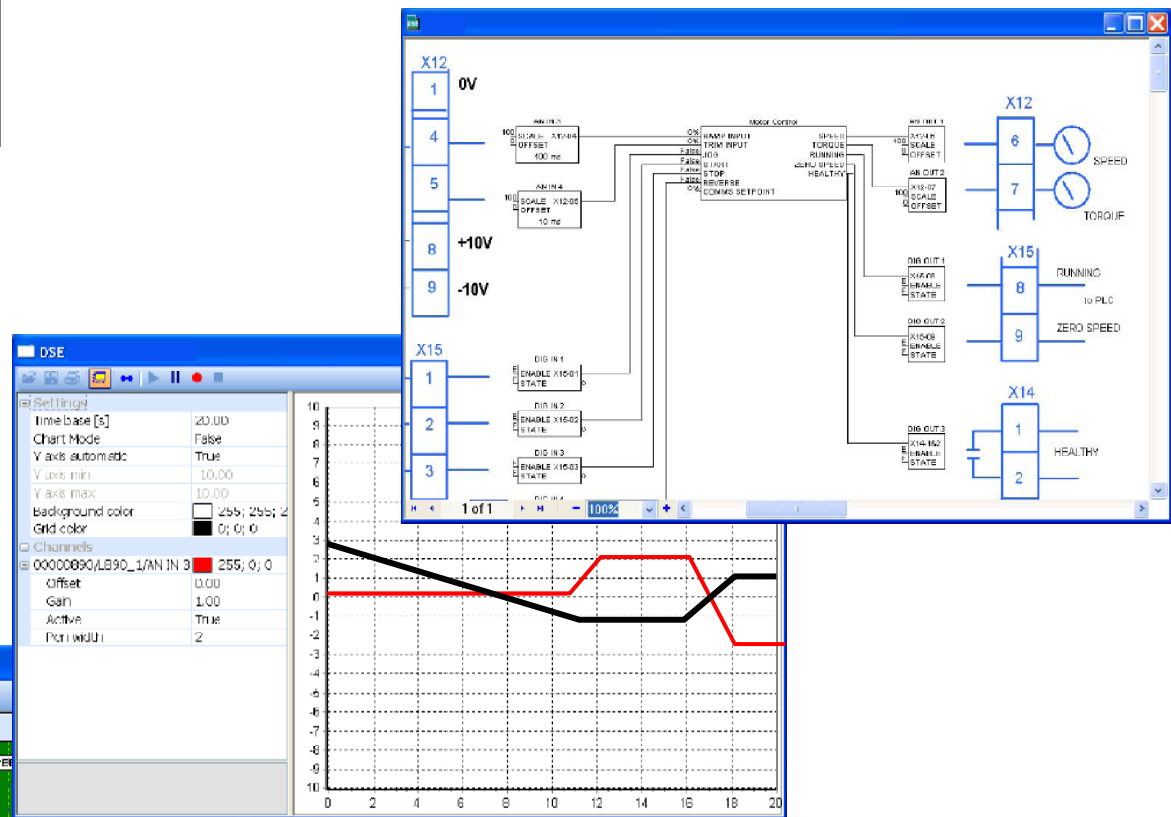
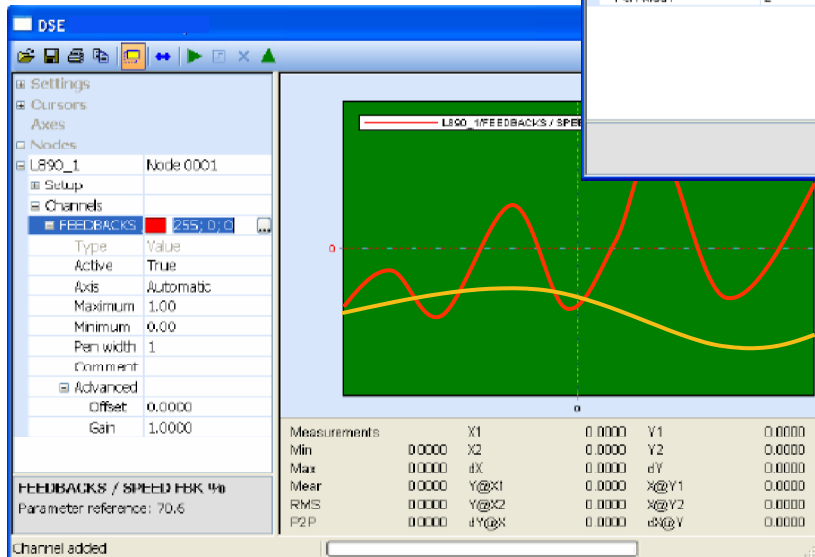
**Macros available for several applications to configure entire Draw Sections,
Current Winders and Speed Winders**



DC590+ Integrator Series

DSE Lite

Windows-based drive
configuration tool



DSE Lite software lets you...

- Set up all parameters and function blocks
- Chart key variables ON LINE!
- View a virtual real-time oscilloscope



DC590+ Integrator Series

AC690+ Integrator Series

Field Bus and
Keypad Options
work with both!



**Your Choice, DC or AC...same
look and feel!**





ENGINEERING **YOUR** SUCCESS.