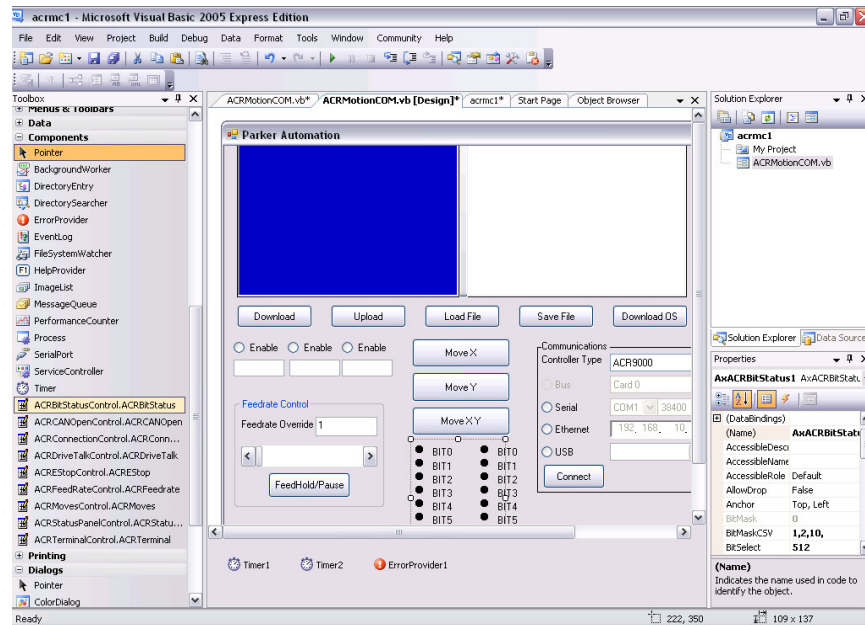


ACR MotionCOMponents Tool Kit



The ACR MotionCOMponents Tool Kit is an extensive collection of components and controls to allow a software developer to quickly and easily build a custom user interface for PC based motion control applications. The tools incorporate a full set of ACR function calls, enabling complete control of any ACR family controller from a PC program.

Includes:

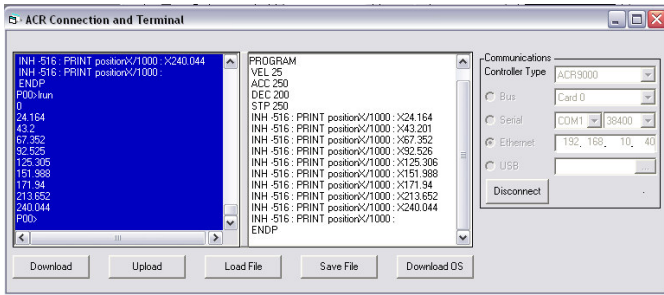
- **Connection Control** for Ethernet, USB, serial or PCI communication with any ACR controller
- **Terminal Control** for direct command input and file transfer
- **Monitor Control** for viewing the status of motion critical flags and parameters
- **Teach Control** for jogging axes and saving data to arrays
- **Playback Control** for running profiles created with the Teach Control.
- **CANopen Control** for seamless integration of a CANopen network
- **Bit and Numeric Status Controls** for convenient display of any controller flag or parameter
- **Moves Control** for multi-axis motion commands
- **Drive Talk Control** for communication with Aries drives from ACR9000

Features:

- Available in both .NET and ActiveX versions
- 12 integrated tools containing more than 100 ACR function calls
- For use with all ACR series controllers
- Pre-built graphical controls for faster development
- Easy, hassle-free installation and set-up
- Functional User Interfaces can be developed in minutes
- Graphical objects include wrapper classes for greater convenience



ACR MotionCOMponents Tool Kit

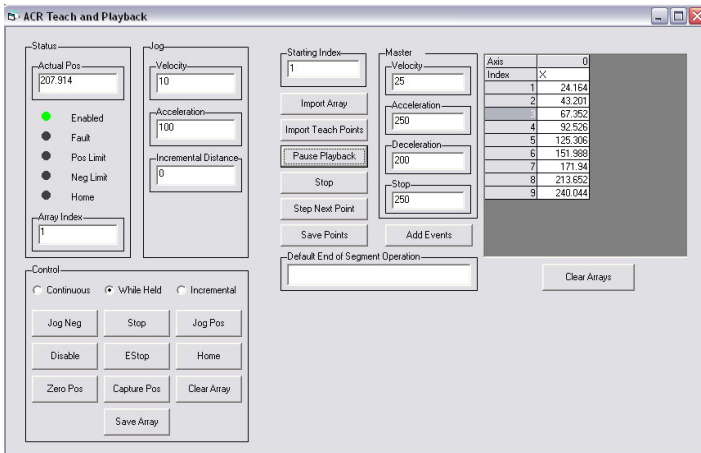
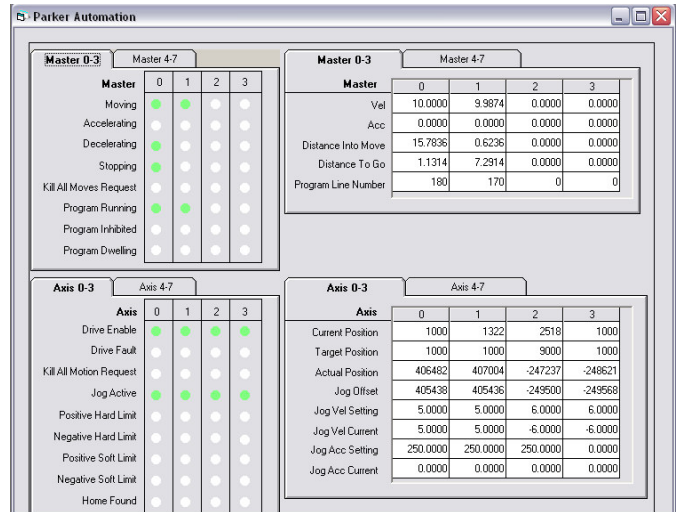


Connect and Talk

The Connection Control establishes communication to any ACR controller and is the main link for all other controls in a project. The Terminal Control allows the user to input commands and queries for immediate execution. Utilities are included for program transfer.

View and Monitor

The StatusPanel Control displays key motion parameters and flags in one convenient tool. Panels are also available to easily customize the polling of data from the controllers.



Jog, Teach and Play

The TeachPanel control is ideal for controlling basic motion functions. Includes homing and drive control, along with position data. This control allows the user to jog to fixed positions, and then capture the data in arrays for later playback. The Playback Control replays recorded positions for multi-axis coordinated motion.

ACR MotionCOMponents Tool Kit is available for download at www.parkermotion.com/support.htm