



aerospace  
climate control  
electromechanical  
filtration  
fluid & gas handling  
hydraulics  
pneumatics  
process control  
sealing & shielding



## AC890PX

High Power Modular AC Drives  
150 – 600 HP / 110 – 400 kW



ENGINEERING YOUR SUCCESS.



# AC890PX

## High Power Modular AC Drives

### Building Block Drive

Patent Pending **PowerPak** modules plug into a common bus rail system to form a **COMPLETE DRIVE**.

Enclosure, disconnect, line reactor and fusing included.

#### Plug-in Modularity

- Sealed modules are easy to install and service
- Modules replace in minutes
- Easy-to-handle-under 50lbs.
- Replaceable by local technical staff
- Freight Friendly, easily shipped around the globe using major overnight carriers
- Packaged and designed to clear customs quickly

#### Integrated Bus System

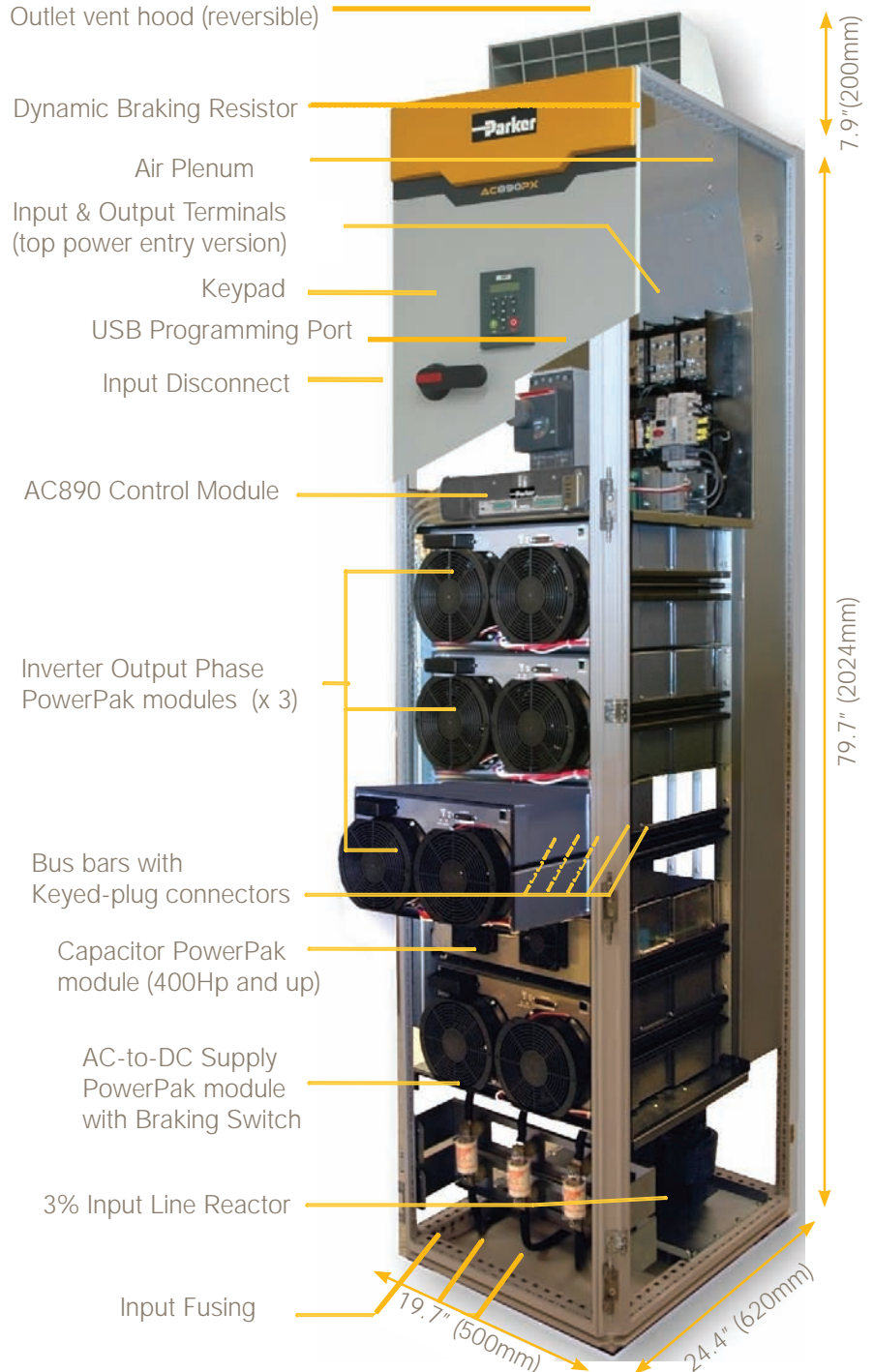
- Power wiring minimized
- Keyed modules eliminate errors

#### Compact Size

- Saves factory floor space
- Only 20" (500mm) wide – Best-in-Class!

#### Industrially Rugged

- Built-in Full Torque Braking
- 4-quadrant dynamic response
- Duty-cycle limited Braking resistor

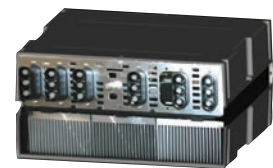


### PowerPak Modules



PowerPak Phase  
Module – Front View

- Each bay location holds 1 PowerPak module
- Includes inverter phase assemblies, DC supplies and capacitor modules
- Bus bars run across the PowerPak module back, w/self aligning, silver-plated pluggable connectors
- Cooling fans draw air in the front & out a top plenum
- Integrally mounted in a 79.7”H x 24.4”D x 19.7”W (2024mmH x 620mmD x 500mmW) enclosure



PowerPak Phase  
Module - Rear View

# AC890PX

## High Power Modular AC Drives

A unique high power AC drive with modular architecture

Patent pending technology

Pluggable PowerPak Modules mean less down time

Line fuses, input line reactor, AC line disconnect included for easy installation

380, 415, 460, 575, and 690 volt inputs accommodated

Dynamic braking switch and resistor included

Safe Stop feature coming soon.

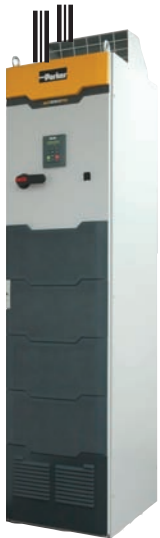


Can a new AC drive design increase your up-time while saving factory floor space and seamlessly integrating with your production line?

The AC890PX from Parker SSD Drives will change your perception of AC drives. The standard drive comes with everything needed to run your process, and once it's installed, will never need a trip back to the factory if service is required.

## AC890PX Power Entry Types

TOP POWER ENTRY/EXIT



BOTTOM POWER ENTRY/EXIT



## Four Operating Modes

- Volts/Hertz
- Sensorless vector
- Full flux vector
- Servo (PMAC)

## Four Feedback Options

- Incremental encoder
- Sin/Cos encoder
- Endat absolute encoder
- Resolver



Runs induction, torque motors, or PMAC Servo

POWER INPUT AND OUTPUT

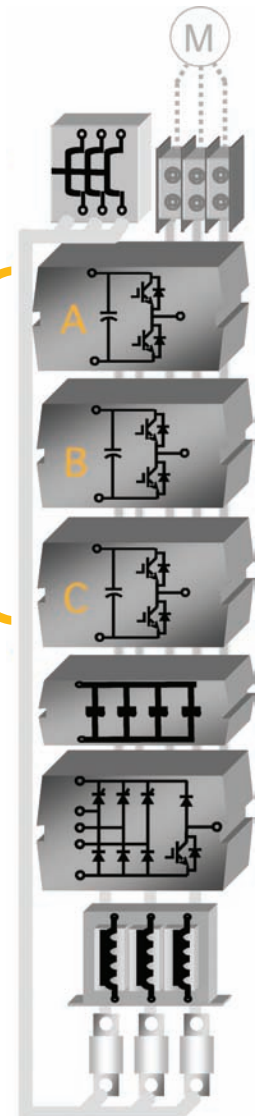
INVERTER PHASE MODULES

FILTER CAPS

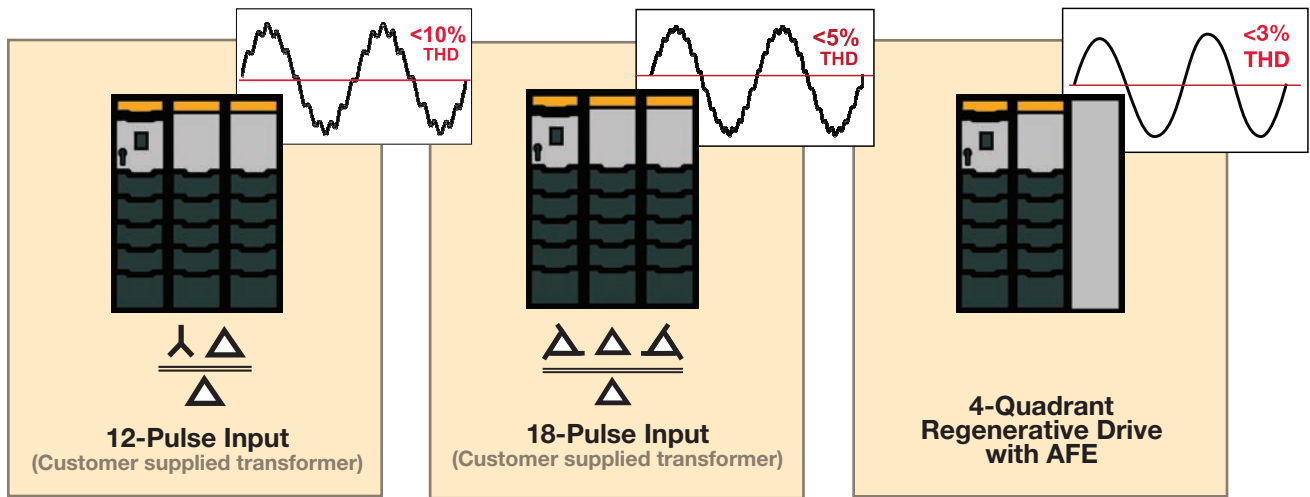
CONVERTER

LINE REACTOR

FUSES



# Alternate Input Power Configurations



# Line Regenerative Capabilities

For applications requiring 4-quadrant operation, the AC890PX Active Front End (AFE) can be specified.

- Fully line regenerative drive
- Continuous duty at full torque – motoring or braking
- Negligible power line harmonics – meets IEEE519
- Unity power factor
- Compact 3-bay (63"/1600mm) enclosure

The schematic diagram shows the power flow path: LCL Filter → Active Bridge → Inverter → Motor (M). A large yellow arrow labeled "POWER FLOW" indicates the direction of power flow from left to right.

# Specifications

OPERATING SPECS	
<b>Std Duty O/L Ratings:</b>	110% for 60 seconds
<b>Heavy Duty O/L Ratings:</b>	150% for 60 seconds
<b>Servo Torque Ratings:</b>	Consult factory
<b>Output Frequency</b>	0 - 1000 Hz; V/Hz mode 0 - 350 Hz; closed loop vector mode 0 - 120 Hz; sensorless vector mode
<b>Switching Frequency</b>	2 kHz (standard default), adjustable to 4 KHz** de-rating may apply; consult factory. Audibly silent switching frequency pattern.
<b>Dynamic Braking</b>	Built-in DB switch and DB Resistor Standard, 100% Torque rated (limited duty) Option for external resistor
<b>Ambient Temperature</b>	0°C to 40°C (32°F to 104°F)
<b>Product Enclosure</b>	Rating IP21/NEMA 1 standard. IP52 and higher available as special order
<b>Enclosure Rating</b>	Enclosure provides 15dB attenuation to radiated emissions between 30-100MHz.
<b>Humidity</b>	Maximum 90% relative humidity at 40°C non-condensing
<b>Atmosphere</b>	Non ammable, non corrosive and dust free
<b>Climatic Conditions</b>	Class 3k3, as de ned by EN50178 (1998)
<b>Vibration</b>	Test Fc of EN60068-2-6

STANDARDS	
<b>Pollution Degree</b>	Pollution Degree II (non-conductive pollution, except for temporary condensation)
<b>Europe</b>	This product conforms with the Low Voltage Directive 73/23/EEC with amendment 93/68/EEC, Article 13 and Annex III using EN50178 (1998) to show compliance. Meets EN61800-3 (2nd environment)
<b>North America/ Canada</b>	Complies with the requirements of UL 508C

# Options & Accessories



Increase the flexibility of the AC890PX by adding:

- 6911 enhanced keypad
- 500mm auxiliary enclosure for following options:
- Output reactor or dV/dt filters for long motor leads
- Additional dynamic resistor capacity
- External EMC filter for 1st environment
- Input or Output contactor

# Applications



Paper and Pulp



Metals



Alternative Energy



Water Treatment

## Specific Applications

- Fans and Pumps
- Compressors
- Extruders
- Web Rewind/Unwind
- Plating
- Engine dynamometers

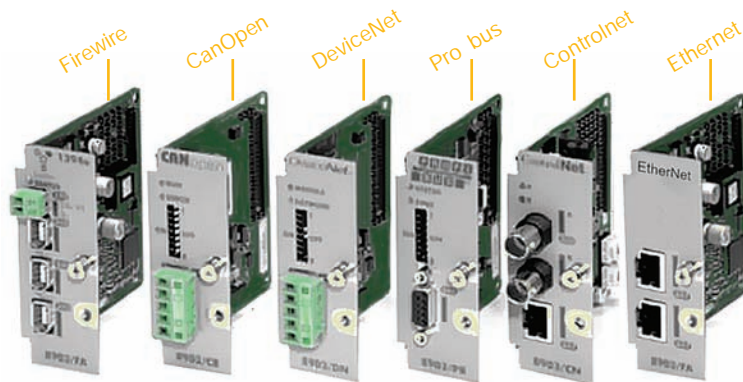
# Communications

AC890PX controllers use a fast 150MHz DSP to manage communications to all major industrial Fieldbus networks. High performance communication ports are linked directly to the fast control loops of the drive. Minimum delay exists between a digital setpoint sent through fieldbus and the control loops.



## Communication Ports

- **Firewire IEEE1394A and B** - Peer-to-peer
- **DeviceNet** - FieldBus
- **CanOpen** - FieldBus
- **Profibus** - FieldBus
- **ControlNet** - FieldBus
- **Firewire** - Peer-to-peer
- **Ethernet** - FieldBus



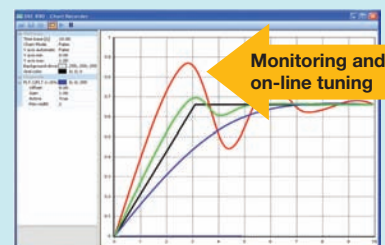
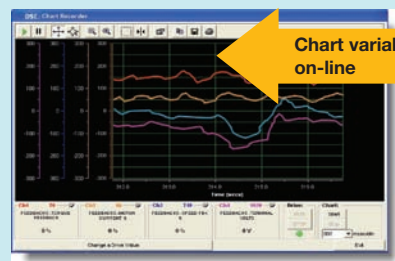
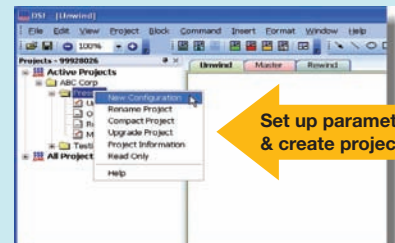
See page 7 for option part numbers.

# DSE

Drive System Explorer Software Tool

DSE has been designed to assist you in the creation and management of your project. It offers user-defined macros and PLC-like function blocks for advanced applications.

- **32 bit architecture**
- **Multiple Configuration Interface**
- **Graphical Programmability**
- **Object Oriented Software**
- **Fully Deterministic**



**DSE Lite is included free of charge**

# Model Number Key



**1 Product Series**  
 890 Standard  
 891 Conformal Coated PCB's

**2 Product Type**  
 PX Modular Standalone Drive

**3 Voltage Rating**  
 4 380-460 VAC  
 6 500-575 VAC  
 7 600-690 VAC

**4 Current Rating**  
 if Voltage code is 4 Cont. Output  
 RMS Amps@400VAC/150% OL  
 0215 150 HP/110 kW  
 0260 200 HP/132 kW  
 0300 250 HP/160 kW  
 0420 300 HP/200 kW  
 0480 400 HP/250 kW  
 0520 280 kW  
 0580 500 HP/315 kW  
 if Voltage code is 6 or 7  
 Cont. Output RMS Amps@  
 690VAC/150% OL  
 0130 150 HP/110 kW  
 0160 200 HP/132 kW  
 0190 250 HP/160 kW  
 0230 200 kW  
 0280 300 HP/250 kW  
 0320 280 kW  
 0340 400 HP/315 kW

**5 Dynamic Braking**  
 B Braking Control  
 includes internal brake  
 resistor (200kJ/2.4 kW)  
 and thermal OL protection  
 N No Brake Switch

**6 Build Options**  
 00 Top Entry  
 01 Bottom Entry  
 02 Top Entry no reactor  
 03 Bottom Entry no reactor

**7 Performance Level**  
 A Advanced  
 H High Performance

**8 Destination**  
 FR France  
 GR Germany  
 IT Italy  
 PL Poland  
 PO Portugal  
 SP Spain  
 SW Sweden  
 UK UK  
 US US/Canada

Feedback Option Cards	
Encoder Quadrature Incremental	8902/EQ/00/FF
EnDat Encoder 2.1 (Sin/Cos type, V2.1)	8902/E1/00/FF
Resolver (Standard for Servo PM Motors)	8902/RE/00/FF
Tech Slot A Option Cards	
DeviceNet FieldBus	8903/DN/00/FF
Pro bus FieldBus	8903/PB/00/FF
ControlNet FieldBus	8903/CN/00/FF
CanOpen FieldBus	8903/CB/00/FF
Modbus (RS485)	8903/RS/00/FF
Ethernet FieldBus (Ethernet/IP)	8903/NE/00/FF
Ethernet FieldBus (Modbus/TCP)	8903/NM/01/FF
Reference Encoder	8903/EQ/00/FF
Mark Registration	8903/M1/00/FF
Tech Slot B Option Cards	
FireWire 1394A (peer to peer comms, 400Mbps)	8903/FA/00/FF
FireWire 1934B (peer to peer comms, 800Mbps)	8903/FB/00/FF

# Drive Ratings

400V Model Numbers	Heavy Duty / CT Rating	Std Duty / VT Rating	HD/CT Amps 150%/60s	SD/VT Amps 110%/60s	Rated Amps No overload
890PX/4/0215/B/00/A	110 kW	132 kW	215	260	265
890PX/4/0260/B/00/A	132 kW	160 kW	260	340	347
890PX/4/0300/B/00/A	160 kW	200 kW	300	390	398
890PX/4/0420/B/00/A	200 kW	250 kW	420	480	487
890PX/4/0480/B/00/A	250 kW	315 kW	480	600	609
890PX/4/0520/B/00/A	280 kW	355 kW	520	660	670
890PX/4/0580/B/00/A	315 kW	400 kW	580	720	731
460V Model Numbers					
890PX/4/0215/B/00/A	150 HP	200 HP	200	250	255
890PX/4/0260/B/00/A	200 HP	250 HP	250	320	326
890PX/4/0300/B/00/A	250 HP	300 HP	300	380	388
890PX/4/0420/B/00/A	300 HP	400 HP	380	480	487
890PX/4/0480/B/00/A	400 HP	500 HP	460	590	599
890PX/4/0580/B/00/A	500 HP	600 HP	580	700	711
575V Model Numbers					
890PX/6/0130/B/00/A	150 HP	200 HP	160	210	214
890PX/6/0160/B/00/A	200 HP	250 HP	210	250	255
890PX/6/0190/B/00/A	250 HP	300 HP	260	310	316
890PX/6/0280/B/00/A	300 HP	400 HP	310	420	426
890PX/6/0340/B/00/A	400 HP	500 HP	410	480	487
690V Model Numbers					
890PX/7/0130/B/00/A	110 kW	132 kW	130	160	163
890PX/7/0160/B/00/A	132 kW	160 kW	160	190	194
890PX/7/0190/B/00/A	160 kW	200 kW	190	240	245
890PX/7/0230/B/00/A	200 kW	250 kW	230	280	286
890PX/7/0280/B/00/A	250 kW	315 kW	280	340	347
890PX/7/0320/B/00/A	280 kW	355 kW	320	390	398
890PX/7/0340/B/00/A	315 kW	400 kW	340	430	436

# Sales Offices

## **Australia**

Parker Hannifin  
(Australia) Pty Ltd  
9 Carrington Road  
Private Bag 4, Castle Hill  
NSW 1765  
Tel: +61 2 9634 7777  
Fax: +61 2 9899 6184

## **Belgium**

Parker Hannifin SA NV  
Parc Industriel Sud Zone 11  
23, Rue du Bosquet  
Nivelles B -1400  
Tel: +32 67 280 900  
Fax: +32 67 280 999

## **Brazil**

Parker Hannifin Ind. e Com. Ltda.  
Av. Lucas Nogueira Garcez, 2181  
Esperança - Caixa Postal 148  
Tel: +55 0800 7275374  
Fax: +55 12 3954 5262

## **Canada**

Parker Motion and Control  
160 Chisolm Drive  
Milton  
Ontario L9T 3G9  
Tel: +1(905)693 3000  
Fax: +1(905)876 1958

## **China**

Parker Hannifin Motion &  
Control  
(Shanghai) Co. Ltd.  
SSD Drives  
Suite B2109 21st Floor  
Hanwei Plaza  
7 Guanghua Road  
Chaoyang District  
Beijing 100004  
Tel: +86(10)6561 0520/1/2/3/4/5  
Fax: +86(10)6561 1070

## **France**

Parker SSD Parvex  
8 Avenue du Lac  
B.P. 249  
F-21007 Dijon Cedex  
Tel: +33 (0)3 80 42 41 40  
Fax: +33 (0)3 80 42 41 23

## **Germany**

Parker Hannifin GmbH  
Von-Humboldt-Strasse 10  
64646 Heppenheim  
Tel: +49(0)6252 798200  
Fax: +49(0)6252 798205

## **India**

SSD Drives India Pvt Ltd  
151 Developed Plots Estate  
Perungudi,  
Chennai, 600 096  
Tel: +91 44 43910700  
Fax: +91 44 43910700

## **Italy**

Parker Hannifin SPA  
Via Gounod 1  
20092 Cinisello Balsamo (MI)  
Milano  
Tel: +39 02 66012459  
Fax: +39 02 66012808

## **Singapore**

Parker Hannifin Singapore Pte Ltd  
11, Fourth Chin Bee Rd  
Singapore 619702  
Tel: +65 6887 6300  
Fax: +65 6265 5125

## **Spain**

Parker Hannifin (España) S.A.  
Parque Industrial Las Monjas  
Calle de las Estaciones 8  
28850 Torrejonde Ardoz  
Madrid  
Tel: +34 91 6757300  
Fax: +34 91 6757711

## **Sweden**

Parker Hannifin AB  
Montörgatan 7  
SE-302 60 Halmstad  
Tel: +46(35)177300  
Fax: +46(35)108407

## **UK**

Parker Hannifin Ltd.  
Tachbrook Park Drive  
Tachbrook Park  
Warwick  
CV34 6TU  
Tel: +44(0)1926 317970  
Fax: +44(0)1926 317980

## **USA**

Parker Hannifin Corp.  
SSD Drives Division  
9225 Forsyth Park Drive  
Charlotte  
North Carolina 28273-3884  
Tel: +1(704)588 3246  
Fax: +1(704)588 3249

