



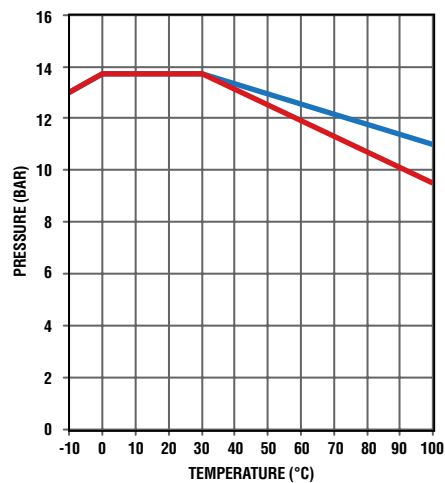
Parker Metric Ball Valve Series BVGLOCK

MATERIALS OF CONSTRUCTION	
VALVE BODY:	BRASS NICKEL PLATED TO DIN 17660 AND UNI 5705
BALL:	BRASS CHROME PLATED
SEATS / SEALS:	PTFE WITH SILICONE FREE LUBRICANT
PACKING GLAND:	PTFE
HANDLE:	CARBON STEEL

SPECIFICATIONS	
MEETS THE REQUIREMENTS OF EUROPEAN DIRECTIVE DI 89/392/CEE RELATING TO THE ISOLATION OF POWER SUPPLY AND TO MEET THE HEALTH AND SAFETY REQUIREMENTS FOR MACHINES AND MATERIALS IN PARAGRAPHS L233-5 OF THE CODE DU TRAVAIL.	



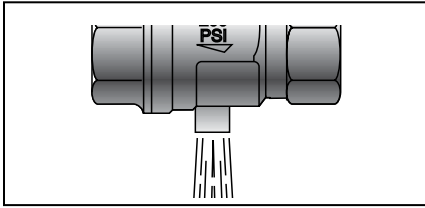
Operating pressures and temperatures



■ 1/4" to 1/2"
■ 3/4" to 2"

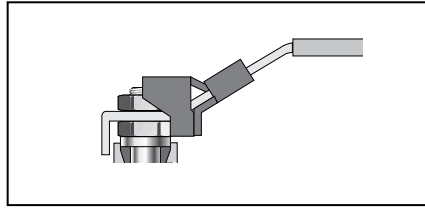
N.B. This chart gives general information. Only testing under operating conditions will finally determine which valve should be selected.

Advantages



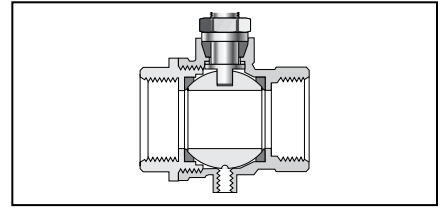
Threaded Exhaust

BVGPLOCK series ball valves are manufactured with an exhaust port, this safety feature enables the downstream air pressure to be vented when the valve is closed. 1/4-1" have M5 thread. 1.1/4 and larger are not threaded.



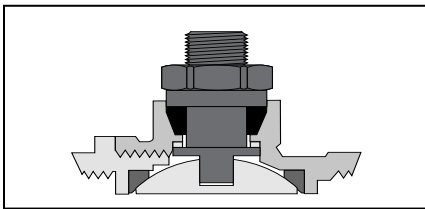
Lockable Handle

The BVGPLOCK series ball valves are fitted with a handle that can be locked in the closed position with a padlock. This safety feature ensures the valve cannot be accidentally opened, and only authorized personnel can operate the valve. Sizes 1.1/4 and larger can be locked in both the open and closed positions.



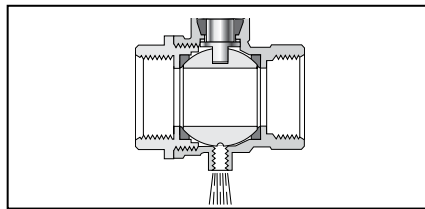
DIN 2999 / ISO 228 Female Threads

BVGPLOCK series valves are manufactured with long female threads in accordance to DIN2999/ISO228. This enables the valves to be used with Prestolok, Metrulok and brass adaptors but also Parker's range of steel hydraulic fittings and EO-fittings form "A" or "C" to DIN 3852.



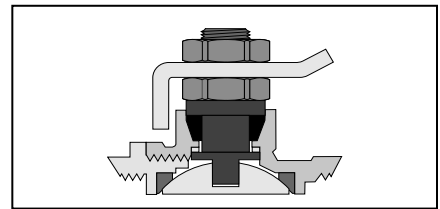
Anti Extrusion Stem

The BVGPLOCK series ball valves are fitted with an anti-extrusion stem to prevent blow out in the case of pressure peaks.



Full Flow

All BVGPLOCK series valves are full-flow. This limits the turbulence created by the passage of fluid across the valve, minimizing pressure drop.



Adjustable Packing

The PTFE packing gland and adjustable washer are designed to give longer service life and lower operating torques.

BVG4PLOCK BSPP Female/Female, Vented, Locking Handle

PART NO.	D FLOW Ø	THREAD BSPP	C	G	H	I	L	L1
BVG4P-1/4 LOCK	8.0	1/4	20	22.5	47.5	12.0	45	96
BVG4P-3/8 LOCK	9.5	3/8	20	22.5	47.5	12.0	45	96
BVG4P-1/2 LOCK	15.0	1/2	25	29.5	52.0	15.5	59	96
BVG4P-3/4 LOCK	19.0	3/4	31	32.0	59.5	17.0	64	117
BVG4P-1 LOCK	24.0	1	40	40.5	63.5	21.0	81	117
BVG4P-1.1/4LOCK	32.0	1-1/4	49	46.5	76.5	23.0	93	158
BVG4P-1.1/2LOCK	40.0	1-1/2	54	51.0	82.5	23.0	102	158
BVG4P-2LOCK	50.0	2	69	60.5	89.5	26.5	121	158

