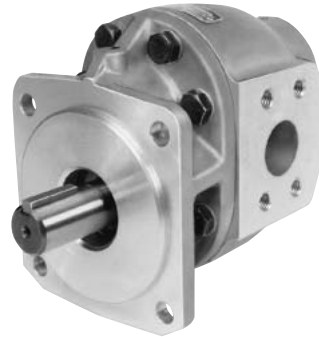


**Specifications
for 20 Series**

Description Gear Pump
Flow Range To 98 GPM (370.9 LTR.)
Displacements To 9.10 C.I.R. (149.12 CC's/REV.)
Maximum Pressure to 2500 PSI (172 BAR)
Maximum Speed to 2500 RPM
Rotation A or C
Bearing Journal
Construction Aluminum or Cast Iron*



Performance Data

Pump Model	Section Size	Displacement/Revolution (Theoretical)					Maximum Pressure		Maximum Speed
		US Gallons	Cubic Inches	Liters	Cubic Centimeters	Imperial Gallons	PSI	BAR	RPM
20	150	.0131	3.02	.0496	49.498	.0108	2500	172	2500
20	200	.0175	4.04	.0662	66.204	.0146	2500	172	2500
20	250	.0219	5.06	.0829	82.919	.0182	2500	172	2500
20	300	.0262	6.05	.0992	99.142	.0218	2500 ⁽¹⁾	172	2500
20	350	.0306	7.07	.1158	115.857	.0255	2500 ⁽²⁾	172	2500
20	400	.0350	8.08	.1325	132.408	.0292	2500	172	2500
20	450	.0394	9.10	.1491	149.123	.0328	2500	172	2500

Notes: (1) 2100 PSI maximum due to torque limitations of No. 4 shaft. (2) 1800 PSI maximum due to torque limitations of No. 4 shaft
All data based on SAE 10W oil at 150°F. Available with Viton® Seals.

*Some models and sizes are available for pressure up to 3500 PSI. Cast-iron not available on all models. Consult factory for availability.



CAUTION: "Inlet vacuum" should not exceed 5" Hg at normal operating speed and temperature.
Operation of pumps in excess of 5" Hg requires factory approval.

Dimensional Data

SAE 4-Bolt Connector Ports					
Size	C	D	E	F	G
1"	12.9 (.51)	26.1 (1.031)	26.1 (1.03)	52.3 (2.062)	3/8-16NC
1-1/4"	14.9 (.59)	30.1 (1.188)	29.2 (1.15)	58.7 (2.313)	7/16-14NC
1-1/2"	17.7 (.70)	35.7 (1.406)	34.7 (1.37)	69.8 (2.750)	1/2-13NC
2"	21.3 (.84)	42.8 (1.688)	38.8 (1.53)	77.7 (3.062)	1/2-13NC

Bodies Available

Inch equivalents for millimeter dimensions are shown in (**).

2

Mounting Dimensions								
PUMP MODEL	For B & C 4-Bolt & B & C 2-Bolt Flanges A		SAE 4-Bolt Connector Ports				Shipping Weights	
			Inlet		Outlet			
			Conn. Sz.	Hole Dia.	Conn. Sz.	Hole Dia.	lbs.	kgs.
20150	167.8 (6.61)		1-1/4"	30.2 (1.19)	1"	23.8 (.937)	19	8.62
20200	167.8 (6.61)		1-1/2"	38.1 (1.50)	1-1/4"	30.2 (1.19)	21	9.53
20250	167.8 (6.61)		1-1/2"	38.1 (1.50)	1-1/4"	30.2 (1.19)	22	9.98
20300	174.2 (6.86)		1-1/2"	38.1 (1.50)	1-1/4"	30.2 (1.19)	23	10.04

3

Mounting Dimensions								
PUMP MODEL	For B & C 4-Bolt & B & C 2-Bolt Flanges A B		SAE 4-Bolt Connector Ports				Shipping Weights	
			Inlet		Outlet			
			Conn. Sz.	Hole Dia.	Conn. Sz.	Hole Dia.	lbs.	kgs.
20150	104.6 (4.12)	167.8 (6.61)	1-1/4"	30.2 (1.19)	1"	23.8 (.937)	19	8.62
20200	104.6 (4.12)	167.8 (6.61)	1-1/4"	30.2 (1.19)	1"	23.8 (.937)	20	9.07
20250	104.6 (4.12)	167.8 (6.61)	1-1/2"	38.1 (1.50)	1-1/4"	30.2 (1.19)	21	9.53
20300	104.6 (4.12)	175.2 (6.90)	1-1/2"	38.1 (1.50)	1-1/4"	30.2 (1.19)	22	9.98
20350	110.4 (4.35)	182.3 (7.18)	1-1/2"	38.1 (1.50)	1-1/4"	30.2 (1.19)	23	10.4
20400	110.4 (4.35)	189.7 (7.47)	2"	50.8 (2.00)	1-1/4"	34.7 (1.37)	24	10.9
20450	118.3 (4.66)	196.8 (7.75)	2"	50.8 (2.00)	1-1/4"	34.7 (1.37)	25	11.3