

Application

To suspend and position tools at work stations. Runner slides in 40 series profile.

Technical Data

Runner: glass-filled nylon, black

Max. load 100 N (23 lbs)

Runner Stop can be created by using:

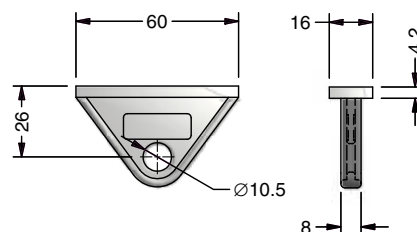
(1) Flat Point Set Screw [24-516-5F]

(1) M5 Z-Nut [20-035]

Ordering Information

Description	Unit	Weight	Part #
Runner	1 pc	12 g	22-136

Tool Runner



22-136

Technical Data

Grey painted steel construction with ball bearing slides and padlock attachment. Stackable.

Order all hardware separately

For mounting to 40 series profile:

Screws	24-118-8
T-nuts	20-058
Flat Washers	24-700-8

Ordering Information

Description (W x D x H)

Drawer 400 x 508 x 172mm

Drawer 400 x 508 x 343mm

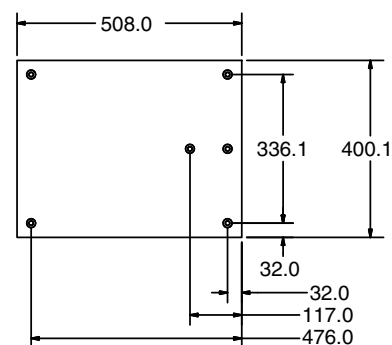
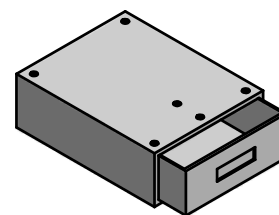
* Contact factory for additional details

Part #

22-121

22-122

Drawer



22-121