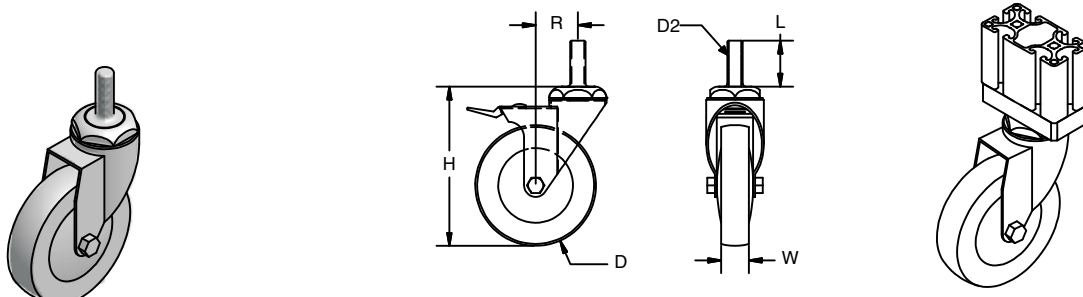
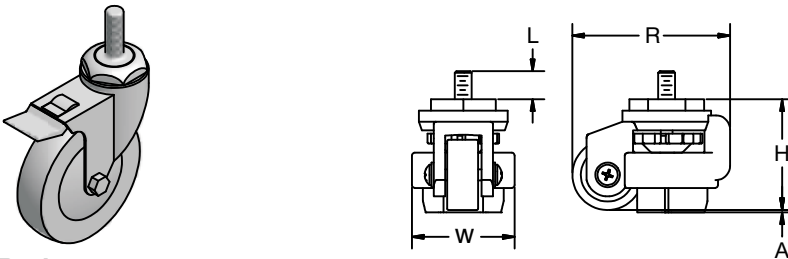


Threaded Casters

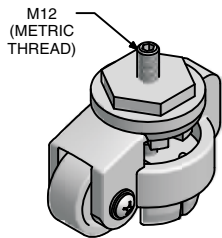
Swivel



Swivel w/Brake



Leveling



Application

Casters designed light to heavy loads. A wrench fits easily on the swivel to allow installation to a base plate. 21-323 and 21-327 are leveling casters with adjustable pad.

Technical Data

Housing: Pressed Steel, Ball Bearing Swivel Head.
Order hardware and base plates separately

Ordering Information

Load Cap kg (lbs)	Wheel	Dimensions (mm)						Wheel Center	Lock	Wt. (kg)	Part #
		W	D	H	R	D2	L				
91 (200)	Hard Rubber	32	125 (5")	162	106	M10	38	Pressed Steel	None	1.04	21-314
91 (200)	Hard Rubber	32	125 (5")	162	106	M10	38	Pressed Steel	Total Lock	1.20	21-315
272 (600)*	Nylon	73	50 (2")	82	104	M12	19	Pressed Steel	Leveler	0.80	21-323
545 (1200)*	Nylon	88	62 (2.5")	102	128	M12	19	Pressed Steel	Leveler	1.20	21-327

* Set of 4

