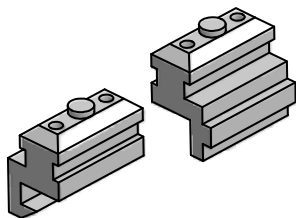
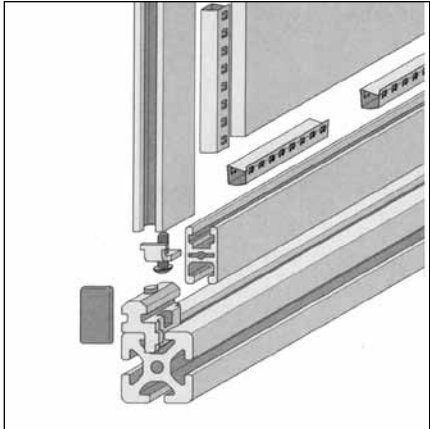


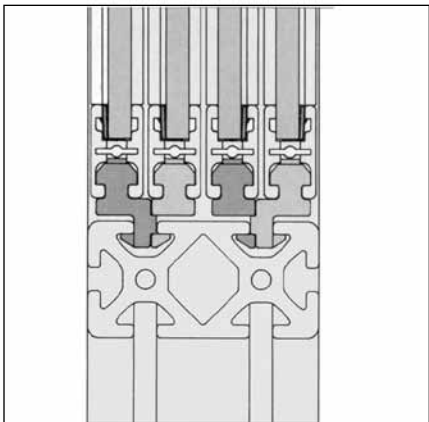
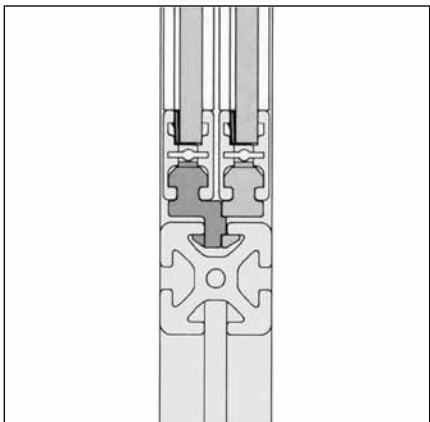
Sliding Door Guide



23-054

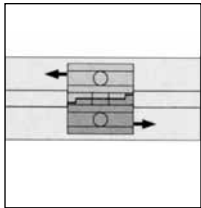
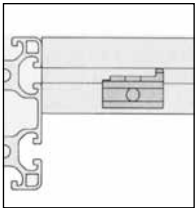
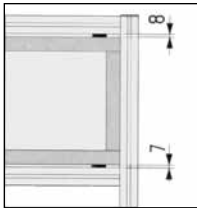


See page 46 for application details



1

2



3

4

5

- 1 Two sliding doors in T-slot of a 40 series profile
- 2 Four sliding doors in T-slots of an 80x40 profile

- 3 Mounting dimensions within a frame
- 4 Slide piece positioning in the T-slot
- 5 Guide pieces function as stops when two doors slide in the same T-slot

Application

Allows a door constructed of 32x18 Bi-Slot profile to slide in the T-Slot of a 40 Series profile. This guide attaches to the door frame through a 7mm mounting hole. Two Guides with opposite offsets are available, allowing 2 panels to be mounted in a single T-Slot.

Technical Data

Polyoxymethylene, Black
Spring/Spring Bolt are Steel
Set includes four guides – two of each offset.
Door Sizing – size door 15mm smaller than frame opening. Door gap will be 7mm at bottom and 8mm at top.

Ordering Information

Description
Sliding-Door Guides for 32x18 Bi-Slot

Unit	Weight	Part #
Set	36 g	23-054

