

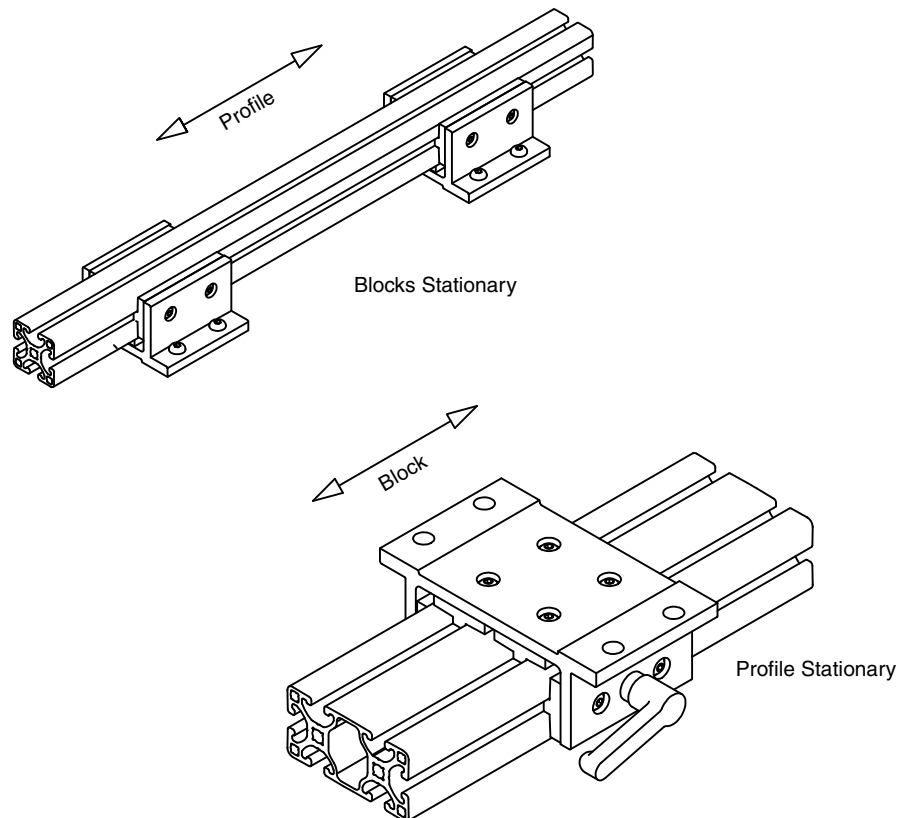
Slide Blocks



Application

Profile Slide Blocks are a versatile, cost efficient concept to build a multitude of adjustable slides and movable rail systems with 40mm and 80mm wide profiles. UMHW slide pads engage directly into the T-slots. Shims provide adjustment for a variety of assembly tolerances. Slide blocks are designed for a compression load – do not hang a load from the pad.

The slide blocks attach to any surface with M8 button head screws. The block slides along a profile when the profile is stationary, or a profile slides in the block, when the block is mounted. Clamping mechanism can be added to lock slide block in place.



UHMW-PE has one of the highest impact strengths of any thermoplastic. It is abrasion resistant, has high tensile strength, displays resistance to stress cracking, and has a low coefficient of friction. It is well-suited where durability and low friction are of paramount importance. Its high resistance to corrosive chemicals, with the exception of oxidizing acids, make it an ideal choice for a wide variety of corrosive environment applications. Maximum operating temperature is 210°F. UHMW-PE can also operate successfully at temperatures as low as -375°F, making it an excellent material for cryogenic applications.

UHMW-PE Design Information

Engineering Specifications of UHMW-Polyethylene

General Properties	Temp.	ASTM Units	Typical Test	Value
Physical				
Specific Gravity	73°F	gms/cc	D792	.830-.934
Water Absorption 24 hours	73°F	%	D670	
Mechanical				
Tensile Strength				
Yield	73°F	10 ³ psi	D638	3.1
Break	73°F	10 ³ psi	D638	7.0
Tensile Elongation				
Yield	73°F	%	D638	—
Break	73°F	%	D638	350
Izod Impact Strength				
Notched	-40°F	ft-lbs/in	D256	21.0
Notched	73°F	ft-lbs/in	D256	30.0
Shore Hardness	73°F		D2240	D62-66
Thermal				
Deflection Temp: 68 psi		°F	D648	203
Coef. of Thermal Exp.		in/in/°F	D698	1.11x10 ⁻⁵
Thermal Conductivity		BTU-in/Hr/Ft/°F		2.92
Flammability Rating, UL94				HB
Electrical				
Diel. Strength (short time)		V/mil	D146	2,300
Dielectric Constant, 50% RH	73°F		D160	2.3
Dissipation Fact., 50% RH	73°F	50 Hz	D160	1.0 x 10 ⁻⁵
		100 Hz		2.5 x 10 ⁻⁵
Volume Resis. Dry	73°F	ohm/cm	D287	>5.0 x 10 ⁻⁵

Bearing Pad Properties

UHMW-PE Deformation under Compression (%)

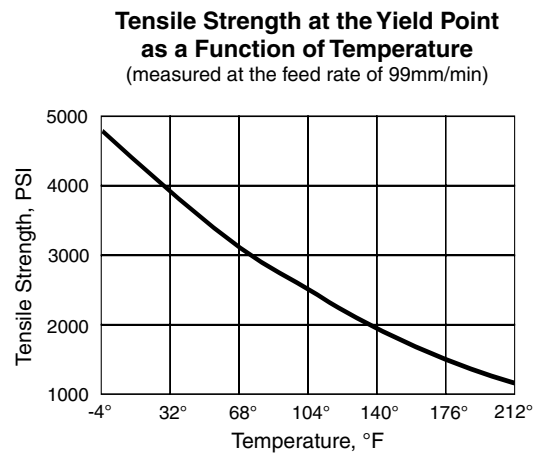
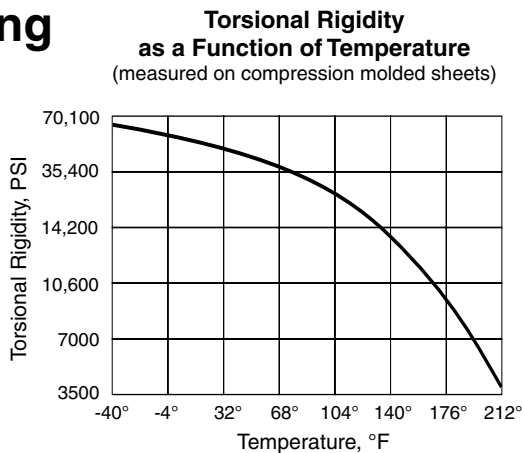
Temp	PSI Compression	Initial Loading					Permanent Deformation After Removal of Load	
		10 Min.	100 Min.	1000 Min.	1 Day	55 Days	After 1 Min.	After 24 Hrs.
68° F	282	1.5	1.7	1.8	1.9	2.4	0.9	0.8
	570	2.4	2.5	2.7	3.0	4.0	1.8	1.2
	850	3.0	4.0	4.5	5.0	5.1	2.7	1.8
	1140	4.0	5.0	6.0	7.0	7.5	3.6	2.4
	1420	5.0	6.6	7.5	8.0	9.0	4.5	2.8
	1700	7.0	7.5	8.0	10.0	11.0	5.4	3.5
122° F	282	1.6	1.8	2.0	2.5	2.6	1.3	0.8
	570	2.6	3.0	3.5	4.0	5.0	2.7	1.5
	850	4.5	5.0	5.5	6.0	7.5	4.1	2.3
	1140	6.0	7.0	8.0	9.0	11.0	5.5	3.1
	1420	7.6	9.0	10.0	11.0	14.0	6.9	3.9
	1700	9.0	11.0	12.0	13.0	16.0	8.2	4.7
176° F	282	2.6	3.0	3.5	4.0	4.5	1.8	1.1
	570	5.0	5.5	6.0	6.5	8.0	3.2	2.3
	850	7.5	8.0	9.0	10.0	12.0	4.8	3.5
	1140	10.0	11.0	12.5	14.0	15.5	6.4	4.6
	1420	12.5	14.0	15.5	17.0	20.0	8.1	5.8
	1700	15.0	17.0	18.0	20.5	24.0	9.7	6.9

Coefficient of Friction

UHMW-PE polymer has a lower coefficient of friction than glass. Together with its self-lubricating characteristics, it is an ideal material for bearings, bushings, valves, wear strips or any application where sliding contact is encountered.

Materials	Static	Kinetic
Aluminum vs. UHMW-PE	0.12	0.016
Anodized 204 R1 spec on extruded aluminum.		

Load Bearing Properties



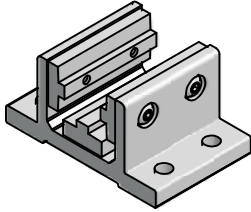
Chemical Resistance of UHMW-PE

Test specimens	Dumb-bell type
Duration of Test	30 days
+ Resistant	Mechanical properties not appreciably affected
/ Limited Resistance	Decreases in yield stress and ultimate tensile strength less than 20%
- Not Resistant	Decreases in yield stress and ultimate tensile strength greater than 20%

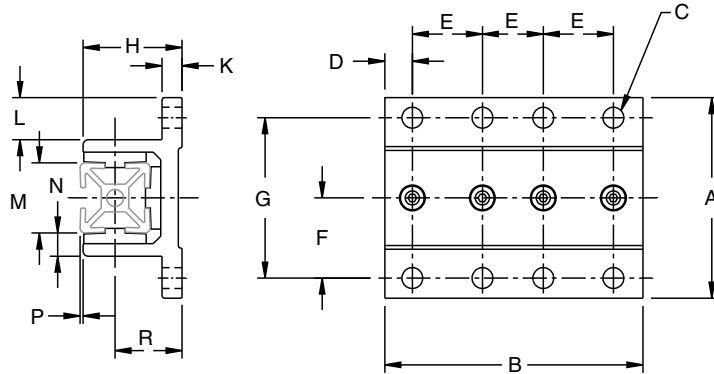
Reagent	20°C	50°C	80°C	Reagent	20°C	50°C	80°C
I. Inorganic Acids				V. Hydrocarbons			
Chromic acid (80%)	+	+	/	Benzene	/	/	-
Hydrochloric acid (conc)	+	+	+	Carbon Tetrachloride	/	-	-
Hydrocyanic acid	+	+	-	Cyclohexane	+	+	-
Hydrofluoric acid	-	-	-	Dichloroethylene	-	-	-
Nitric acid (conc)	/	-	-	Diesel oil	+	+	/
Nitric acid (50%)	+	+	/	n-Heptane	+	+	-
Nitric acid (20%)	+	+	+	Petroleum ether	+	-	-
Phosphoric acid (85%)	+	-	-	Trichloroethylene	/	-	-
Sulphuric acid (conc)	+	-	-	Toluene	/	-	-
Sulphuric acid (50%)	+	+	+	White spirit	+	/	-
				Xylene	/	/	-
II. Alkalis				VI. Alcohols, Ketones, Ester and Amines			
Aqueous ammonia	+	+	-	Acetone	+	+	-
Potassium Hydroxide solution	+	+	+	Aniline	+	+	/
Sodium Hydroxide solution	+	+	+	Benzyl alcohol	+	+	+
III. Aqueous Solutions of Inorganic Salts				Butyl alcohol	+	+	+
Aluminum Chloride	+	+	-	Cyclohexanol	+	+	+
Aluminum Nitrate	+	+	+	Ethanol	+	+	-
Bleaching powder	+	+	+	Ethyl acetate	+	+	-
Calcium Chloride	+	+	+	Ethylene glycol	+	+	+
Sodium Carbonate	+	+	+	Glycene	+	+	+
Sodium Chloride	+	+	+	Lauryl alcohol	+	+	+
Sodium Hypochlorite	+	+	+	Propyl alcohol	+	+	+
Zinc Chloride	+	+	+	VII. Miscellaneous			
IV. Organic Acids				Beer	+	+	+
Acetic acid (99%)	+	+	/	Detergents in aqueous solution	+	+	+
Acetic acid (10%)	+	+	+	Distilled water	+	+	+
Butyric acid	+	+	-	Hydrogen peroxide 30%	+	+	-
Citric acid	+	+	+	Linseed oil	+	+	+
Formic acid	+	+	-	Milk	+	+	+
Oleic acid	+	+	/	Olive Oil	+	+	+
				Sea water	+	+	+
				Wine	+	+	+

The information contained herein is, to our best knowledge, true and accurate, but all recommendations or suggestions are made without guarantee, since the conditions of use are beyond our control. We disclaim any liability incurred in connection with the use of these data or suggestions. This publication is not to be taken as a license to operate under, or a recommendation to infringe any patents. The observance of all legal regulations and patents is the responsibility of the user.

Double Flange 28 x 28 and 1" x 1"

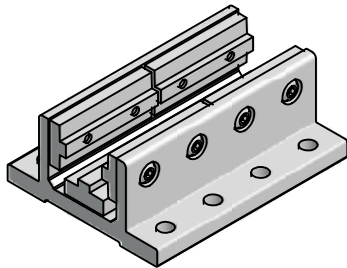


30-2801
30-1002



Part #	A	B	C	D	E	F	G
30-2801	80	50	4xØ8.3	11	28	32	64
30-2808	80	100	8xØ8.3	8	28	32	64
Part #	H	K	L	M	N	P*	R
30-2801	39.5	8	16.75	28	9.25	1.1	26.9
30-2808	39.5	8	16.75	28	9.25	1.1	26.9

* Add 28mm (1.102") when using 12-248 profile.



30-2808
30-1004

Part #	A	B	C	D	E	F	G
30-1002	3.15"	2.00"	4xØ0.28"	0.50"	1.00"	1.25"	2.50"
30-1004	3.15"	4.00"	8xØ0.28"	0.50"	1.00"	1.25"	2.50"
Part #	H	K	L	M	N	P	R
30-1002	1.56"	0.31"	0.66"	1.03"	0.40"	0.06"	1.11"
30-1004	1.56"	0.31"	0.66"	1.03"	0.40"	0.06"	1.11"

Application

These double flange units offer low cost linear guidance. They utilize glide pads oriented within T-slots. You make your own guidance device. You provide the power – pneumatic, electro-mechanical or manual.

Shims are available to provide a more precise fit. See page 201 for optional clamping mechanism and page 202 for machining details.

Technical Data

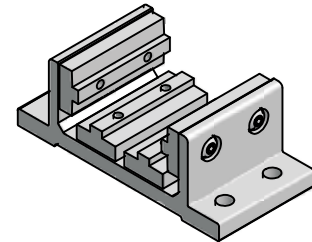
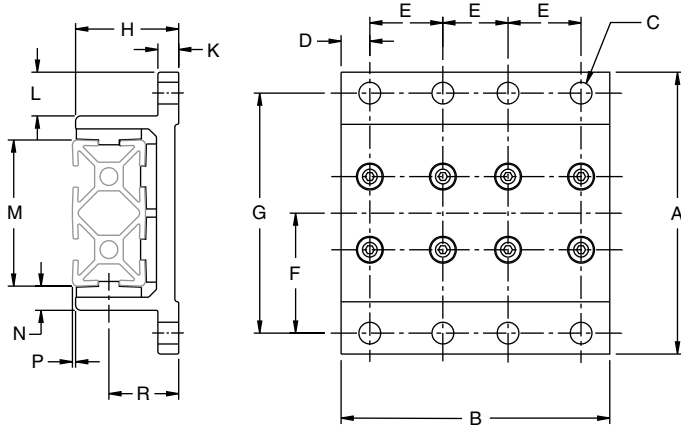
Aluminum, Clear Anodized

UHMW glide pads

Ordering Information

Description	Unit	Weight	Part #
Slide Block 28, 50mm Long	Each	0.14 kg	30-2801
Slide Block 28, 100mm Long	Each	0.58 kg	30-2808
Slide Block 1, 2" Long	Each	0.14 kg	30-1002
Slide Block 1, 4" Long	Each	0.25 kg	30-1004

Double Flange 56 x 28 and 2" x 1"

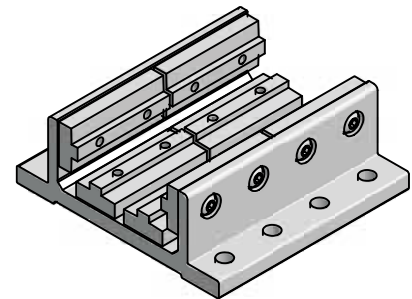


30-5601
30-2002

Part #	A	B	C	D	E	F	G
30-5601	108	50	4xØ8.3	11	28	46	92
30-5608	108	100	8xØ8.3	8	28	46	92
Part #	H	K	L	M	N	P*	R
30-5601	39.5	8	16.75	56	9.25	1.125	26.75
30-5608	39.5	8	16.75	56	9.25	1.125	26.75

* Add 28mm (1.102") when using 12-056 profile.

Part #	A	B	C	D	E	F	G
30-2002	4.25"	2.00"	4xØ0.28"	0.50"	1.00"	1.75"	3.50"
30-2004	4.25"	4.00"	8xØ0.28"	0.50"	1.00"	1.75"	3.50"
Part #	H	K	L	M	N	P	R
30-2002	1.56"	0.31"	0.66"	2.03"	0.45"	0.06"	1.11"
30-2004	1.56"	0.31"	0.66"	2.03"	0.45"	0.06"	1.11"



30-5608
30-2004

Application Data

These double flange units offer low cost linear guidance. They utilize glide pads oriented within T-slots. You make your own guidance device. You provide the power – pneumatic, electro-mechanical, or manual.

Shims are available to provide a more precise fit. See page 201 for optional clamping mechanism and page 202 for machining details.

Technical Data

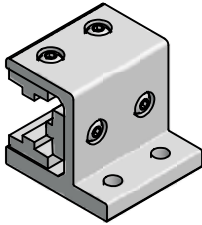
Aluminum, Clear Anodized
 UHMW glide pads

Ordering Information

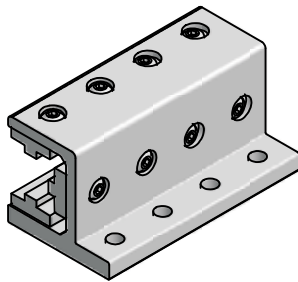
Description	Unit	Weight	Part #
Slide Block 28, 50mm Long	Each	0.34 kg	30-5601
Slide Block 28, 100mm Long	Each	0.72 kg	30-5608
Slide Block 2, 2" Long	Each	0.23 kg	30-2002
Slide Block 2, 4" Long	Each	0.42 kg	30-2004



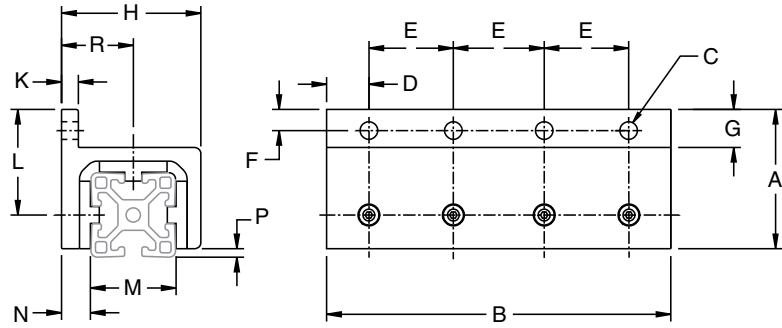
Side Flange 28 x 28 and 1" x 1"



30-2821
30-1012



30-2828
30-1014



Part #	A	B	C	D	E	F	G
30-2821	54	50	2xØ8.3	11	28	10	18
30-2828	54	100	4xØ8.3	8	28	10	18
Part #	H	K	L	M	N	P*	R
30-2821	49.5	8	41	28	11.9	1.2	26.3
30-2828	49.5	8	41	28	11.9	1.2	26.3

* Add 28mm (1.102") when using 12-428 profile.

Part #	A	B	C	D	E	F	G
30-1012	2.13"	2.00"	2xØ0.28"	0.50"	1.00"	0.375"	0.71"
30-1014	2.13"	4.00"	4xØ0.28"	0.50"	1.00"	0.375"	0.71"
Part #	H	K	L	M	N	P	R
30-1012	1.95"	0.31"	1.68"	1.03"	0.52"	0.06"	1.03"
30-1014	1.96"	0.31"	1.68"	1.03"	0.52"	0.06"	1.03"

Application

Used with 28x28 profiles for low cost linear applications where one side is not available for mounting. Delrin slide pads engage directly into the profile T-slots. Shims are available to provide a more precise fit. See page 201 for optional clamping mechanism and page 202 for machining details.

Technical Data

Aluminum, Clear Anodized
UHMW glide pads

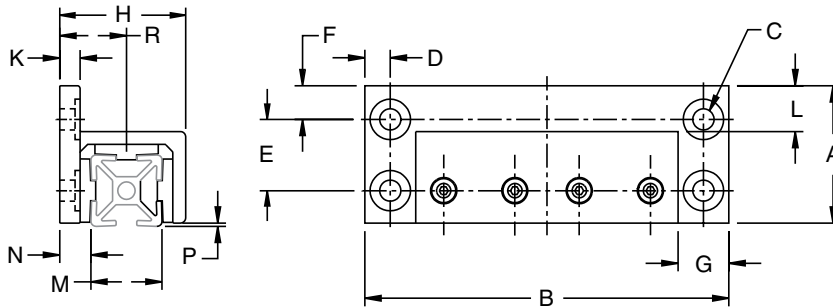
Ordering Information

Description	Unit	Weight	Part #
Slide Block 28, 50mm Long	Each	0.34 kg	30-2821
Slide Block 28, 100mm Long	Each	0.39 kg	30-2828
Slide Block 1", 2" Long	Each	0.14 kg	30-1012
Slide Block 1", 4" Long	Each	0.25 kg	30-1014

Note: All dimensions in mm (in)



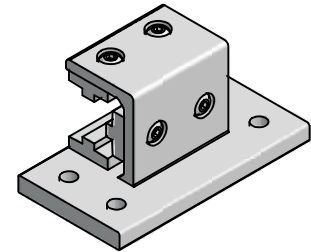
**Side Flange
 Extended
 28 x 28 and 1" x 1"**



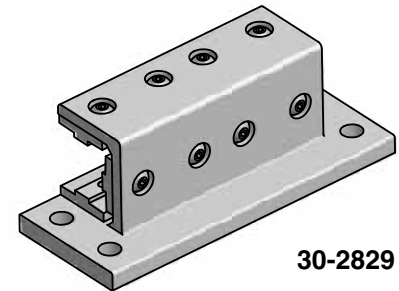
Part #	A	B	C	D	E	F	G
30-2822	54	90	4xØ8.3	10	28	13.2	20
30-2829	54	140	4xØ8.3	10	28	13.2	20
Part #	H	K	L	M	N	P*	R
30-2822	49.5	8	18	28	12	11.9	26.3
30-2829	49.5	8	18	28	12	11.9	26.3

* Add 28mm (1.102") when using 12-428 profile.

Part #	A	B	C	D	E	F	G
30-1024	2.13"	4.00"	4xØ0.28"	0.50"	1.00"	0.56"	1.00"
Part #	H	K	L	M	N	P	R
30-1024	1.95"	0.31"	0.71"	1.03"	0.52"	0.06"	1.03"



**30-2822
 30-1024**



30-2829

Application

Used with 28x28 profiles for low cost linear applications where one side is not available for mounting. Delrin slide pads engage directly into the profile T-slots. Shims are available to provide a more precise fit. See page 201 for optional clamping mechanism and page 202 for machining details.

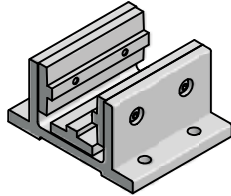
Technical Data

Aluminum, Clear Anodized
 UHMW glide pads

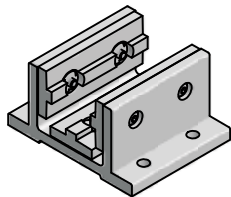
Ordering Information

Description	Unit	Weight	Part #
Slide Block 28, 90mm Long	Each	0.34 kg	30-2822
Slide Block 28, 140mm Long	Each	0.72 kg	30-2829
Slide Block 1" Extended, 4" Long Each		0.26 kg	30-1024

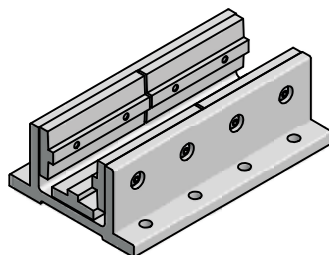
Double Flange 40 x 40 and 1.5" x 1.5"



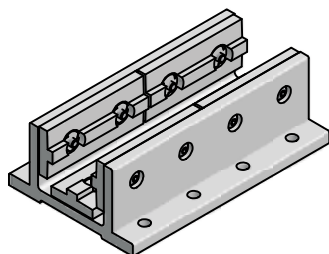
30-4001
30-1503



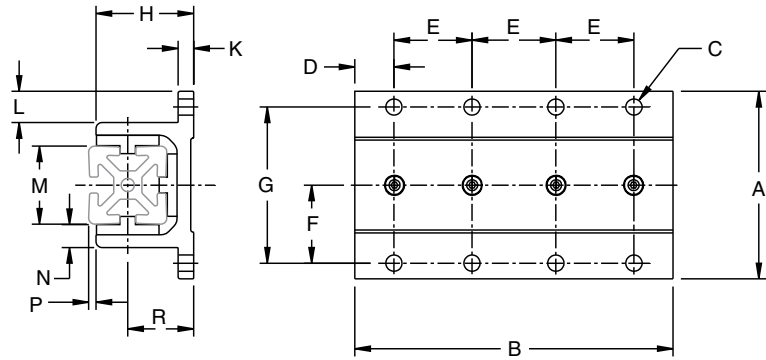
30-4001HC
30-1503HC



30-4008
30-1506



30-4008HC
30-1506HC



Part #	A	B	C	D	E	F	G
30-4001	96	80	4xØ8.3	20	40	40	80
30-4008	96	160	8xØ8.3	20	40	40	80
Part #	H	K	L	M	N	P*	R
30-4001	50	8	16	40	12	4	34
30-4008	50	8	16	40	12	4	34

* Add: 40mm (1.575") when using 10-080, 10-680 or 11-080 profile.
80mm (3.15") when using 10-120 profile.
120mm (4.72") when using 10-164 or 11-140 profile.

Part #	A	B	C	D	E	F	G
30-1503	3.78"	3.00"	4xØ0.28"	0.75"	1.50"	1.50"	3.00"
30-1506	3.78"	6.00"	8xØ0.28"	0.75"	1.50"	1.50"	3.00"
Part #	H	K	L	M	N	P	R
30-1503	1.97"	0.31"	0.63"	1.52"	0.50"	0.12"	1.34"
30-1506	1.97"	0.31"	0.63"	1.52"	0.50"	0.12"	1.34"

Application

Bearing block for slides and movable rail applications requiring very cost efficient construction. This block can be used on 40 series Standard or Heavy profiles. High cycle (HC) units utilize a steel threaded insert to mount the pad to the unit. These specially designed slide block units are used in high cycle applications where rapid acceleration and deceleration takes place.

Shims are available to provide a more precise fit. See page 201 for optional clamping mechanism and page 202 for machining details.

Technical Data

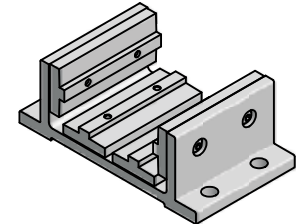
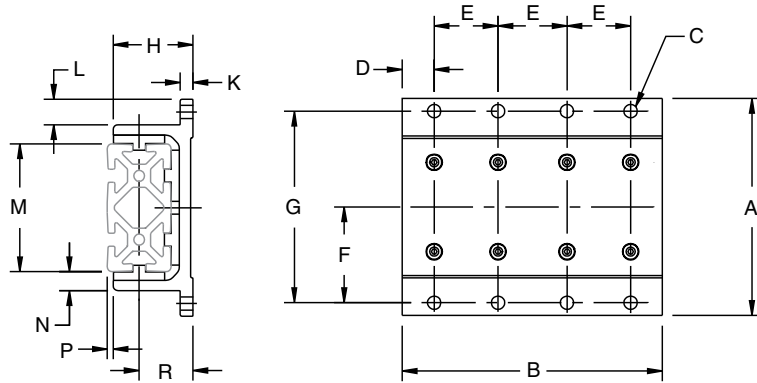
Aluminum, Clear Anodized
UHMW glide pads

Safe load:
30-4001 or 30-1503 = 1,000 N (225 lbs)
30-4008 or 30-1506 = 2,000 N (450 lbs)

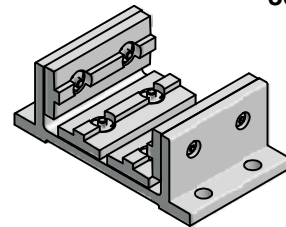
Ordering Information

Description	Unit	Weight	Part #
Slide Block 40, 80mm Long	1 pc	0.31 kg	30-4001
Slide Block 40, 160mm Long	1 pc	0.62 kg	30-4008
Slide Block 40 HC, 80mm Long	1 pc	0.31 kg	30-4001HC
Slide Block 40 HC, 160mm Long	1 pc	0.62 kg	30-4008HC
Slide Block 1.5, 3" Long	1 pc	0.31 kg	30-1503
Slide Block 1.5, 6" Long	1 pc	0.62 kg	30-1506
Slide Block 1.5 HC, 3" Long	1 pc	0.31 kg	30-1503HC
Slide Block 1.5 HC, 6" Long	1 pc	0.62 kg	30-1506HC

Double Flange
80 x 40 and 3" x 1.5"



30-8001
30-3003

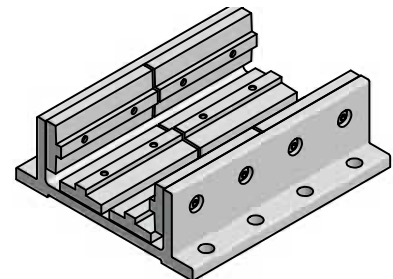


30-8001HC
30-3003HC

Part #	A	B	C	D	E	F	G
30-8001	136	80	4xØ8.3	20	40	60	120
30-8008	136	160	8xØ8.3	20	40	60	120
Part #	H	K	L	M	N	P*	R
30-8001	50	8	16	80	12	3.7	34
30-8008	50	8	16	80	12	3.7	34

* Add: 40mm (1.575") when using 10-088 or 11-088 profile.
 120mm (4.72") when using 10-160 or 11-160 profile.

Part #	A	B	C	D	E	F	G
30-3003	5.35"	3.00"	4xØ0.34"	0.75"	1.50"	2.35"	4.69"
30-3006	5.35"	6.00"	8xØ0.34"	0.75"	1.50"	2.35"	4.69"
Part #	H	K	L	M	N	P	R
30-3003	1.97"	0.31"	0.63"	3.02"	0.54"	0.12"	1.34"
30-3006	1.93"	0.31"	0.63"	3.02"	0.54"	0.12"	1.34"



30-8008
30-3006

Application

Bearing block for slides and movable rail applications requiring very cost efficient construction. This block can be used on the 80mm side of 40 series Standard or Heavy profiles. High cycle (HC) units utilize a steel threaded insert to mount the pad to the unit. These specially designed slide block units are used in high cycle applications where rapid acceleration and deceleration takes place.

Shims are available to provide a more precise fit. See page 201 for optional clamping mechanism and page 202 for machining details.

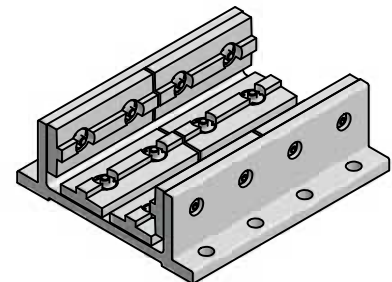
Technical Data

Aluminum, Clear Anodized
 UHMW glide pads

Safe load:
 30-8001 or 30-3003 = 2,000 N (450 lb)
 30-8008 or 30-3006 = 4,000 N (900 lb)

Ordering Information

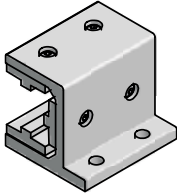
Description	Unit	Weight	Part #
Slide Block 80, 80mm Long	1 pc	0.38 kg	30-8001
Slide Block 80, 160mm Long	1 pc	0.76 kg	30-8008
Slide Block 80 HC, 80mm Long	1 pc	0.38 kg	30-8001HC
Slide Block 80 HC, 160mm Long	1 pc	0.76 kg	30-8008HC
Slide Block 3, 3" Long	1 pc	0.38 kg	30-3003
Slide Block 3, 6" Long	1 pc	0.76 kg	30-3006
Slide Block 3 HC, 3" Long	1 pc	0.38 kg	30-3003HC
Slide Block 3 HC, 6" Long	1 pc	0.76 kg	30-3006HC



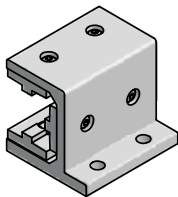
30-8008HC
30-3006HC



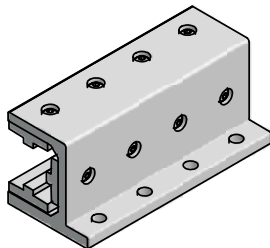
Side Flange 40 x 40 and 1.5" x 1.5"



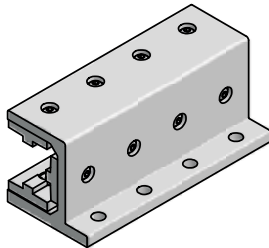
30-4021
30-1513



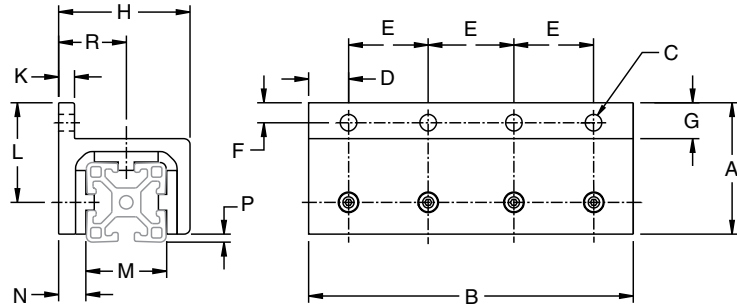
30-4021HC
30-1513HC



30-4028
30.1523



30-4028HC
13-1523HC



Part #	A	B	C	D	E	F	G
30-4021	66	80	2xØ8.3	20	40	10	18
30-4028	66	160	4xØ8.3	20	40	10	18
Part #	H	K	L	M	N	P*	R
30-4021	66	8	50	40	14	4	34
30-4028	66	8	50	40	14	4	34

* Add: 40mm (1.575") when using 10-080, 10-680 or 11-080 profile.
80mm (3.15") when using 10-120 profile.
120mm (4.72") when using 10-164 or 11-140 profile.

Part #	A	B	C	D	E	F	G
30-1513	2.60"	3.00"	2xØ0.34"	0.75"	1.50"	0.38"	0.71"
30-1523	2.60"	6.00"	4xØ0.34"	0.75"	1.50"	0.38"	0.71"
Part #	H	K	L	M	N	P	R
30-1513	2.60"	0.31"	1.97"	1.61"	0.58"	0.12"	1.34"
30-1523	2.60"	0.31"	1.97"	1.61"	0.58"	0.12"	1.34"

Application

Used with 40x40 or 1.5"x1.5" profiles for low cost linear applications where one side is not available for mounting. Slide pads engage directly into the profile T-slots. Shims are available to provide a more precise fit. High cycle (HC) units utilize a steel threaded insert to mount the pad to the unit. These specially designed slide block units are used in high cycle applications where rapid acceleration and deceleration takes place.

Optional clamping mechanism can be added as required. Each clamp requires a machined hole. Refer to pages 201-202 for details

Technical Data

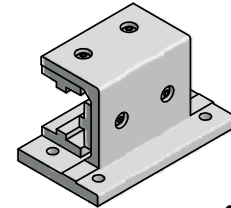
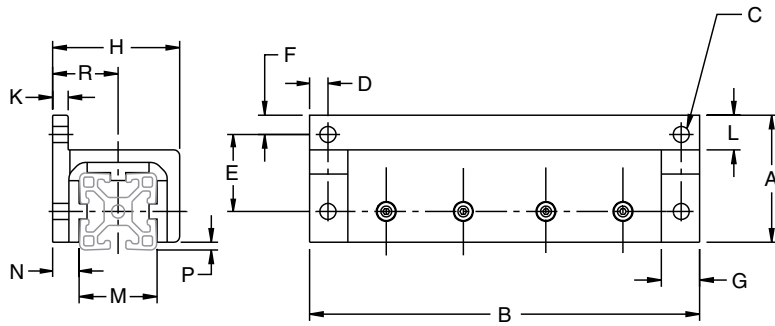
Aluminum, Clear Anodized

UHMW glide pads

Ordering Information

Description	Unit	Weight	Part #
Slide Block 40, 80mm Long	Each	0.31 kg	30-4021
Slide Block 40, 160mm Long	Each	0.42 kg	30-4028
Slide Block 40 HC, 80mm Long	Each	0.31 kg	30-4021HC
Slide Block 40 HC, 160mm Long	Each	0.42 kg	30-4028HC
Slide Block 1.5, 3" Long	Each	0.31 kg	30-1513
Slide Block 1.5, 6" Long	Each	0.62 kg	30-1523
Slide Block 1.5 HC, 3" Long	Each	0.31 kg	30-1513 HC
Slide Block 1.5 HC, 6" Long	Each	0.62 kg	30-1523 HC

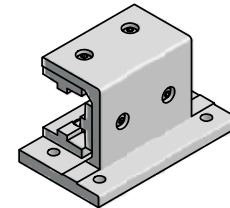
Side Flange Extended 40 x 40 and 1.5" x 1.5"



30-4022
30-1516

Part #	A	B	C	D	E	F	G
30-4022	66	120	4xØ8.3	10	40	10	20
30-4029	66	200	4xØ8.3	10	40	10	20
Part #	H	K	L	M	N	P*	R
30-4022	66	8	18	40	14	4	34
30-4029	66	8	18	40	14	4	34

* Add: 40mm (1.575") when using 10-080, 10-680 or 11-080 profile.
 80mm (3.15") when using 10-120 profile.
 120mm (4.72") when using 10-164 or 11-140 profile.



30-4022HC
30-1516HC

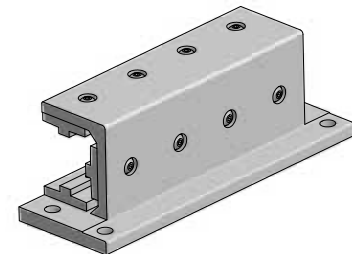
Part #	A	B	C	D	E	F	G
30-1516	2.60"	4.50"	4xØ0.34"	0.50"	1.50"	0.47"	0.75"
Part #	H	K	L	M	N	P*	R
30-1516	2.60"	0.31"	1.97"	1.50"	0.58"	0.12"	1.34"

Application

Used with 40x40 or 1.5"x1.5" profiles for low cost linear applications where one side is not available for mounting. Slide pads engage directly into the profile T-slots. Shims are available to provide a more precise fit.

High cycle (HC) units utilize a steel threaded insert to mount the pad to the unit. These specially designed slide block units are used in high cycle applications where rapid acceleration and deceleration takes place.

Optional clamping mechanism can be added as required. Each clamp requires a machined hole. Refer to pages 201-202 for details.



30-4029

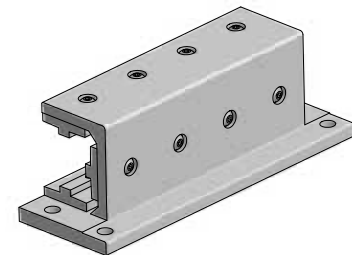
Technical Data

Aluminum, Clear Anodized

UHMW glide pads

Ordering Information

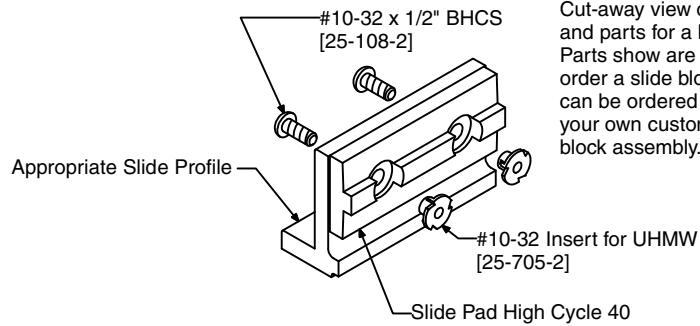
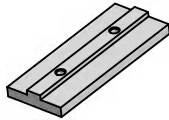
Description	Unit	Weight	Part #
Slide Block 40, 120mm Long	Each	0.34 kg	30-4022
Slide Block 40, 200mm Long	Each	0.72 kg	30-4029
Slide Block 40 HC, 120mm Long	Each	0.34 kg	30-4022HC
Slide Block 40 HC, 200mm Long	Each	0.72 kg	30-4029HC
Slide Block 1.5, 4.5" Long	Each	0.37 kg	30-1516
Slide Block 1.5 HC, 4.5" Long	Each	0.37 kg	30-1516HC



30-4029HC



Slide Pads & Shims



Cut-away view of the assembly and parts for a high cycle slide. Parts shown are included when you order a slide block assembly, but can be ordered separately to make your own custom high cycle slide block assembly.

Application

Glide pads let you custom design a low friction guidance unit. Slide pad can also be attached to a profile to serve as a guide in sliding door applications.

Technical Data

Slide Pad: UHMW

Shim: PET (polyethylene terephthalate), 0.005" thick

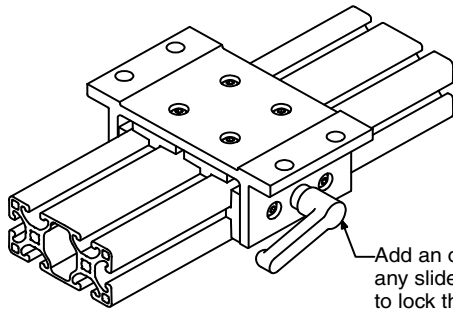
Recommended Fastener: 24-112-5

Ordering Information

Description	Unit	Part #
Slide Pad 28 Series, 80mm*	1 pc	30-2800-2
Slide Pad 40 Series, 80mm*	1 pc	30-4000-2
Slide Pad 40 Series, 300mm†	1 pc	30-4000-3
Slide Pad 40 Series, 80mm High Cycle	1 pc	30-4000-6
Shim 80	pkg of 4	30-412Z2
Shim 160	pkg of 4	30-812Z2
Slide Pad, 1" x 2" *	1 pc	30-1000
Slide Pad, 1" x 2" Top*	1 pc	30-1001
Slide Pad, 1" x 2" Top*	1 pc	30-2000
Slide Pad, 1.5" x 3" *	1 pc	30-1500
Slide Pad, 1.5" x 3" High Cycle	1 pc	30-1501
Slide Pad, 3" *	1 pc	30-3000
Slide Pad, 3" High Cycle	1 pc	30-3001

* Tapped

† Un-tapped



Add an optional locking handle to any slide block, to provide a mechanism to lock the slide block in place anywhere on the extrusion.

Application

These clamp accessories provide positioning and adjustment for 40 Series slide units. Handles provide mechanism to lock the slide block in place anywhere on the extrusion.

Slide extrusions and pads can be drilled to accept clamp.

Ordering Information

Description	Width (mm)	Depth (mm)	Part #	
			40/1.5" Series	28 Series
Ratcheting L-Handle	63	32.8	30-0011	30-0001
Star Handle	40	36.7	30-0015	30-0005

Clamp Accessories



30-0001



30-0005



30-0011



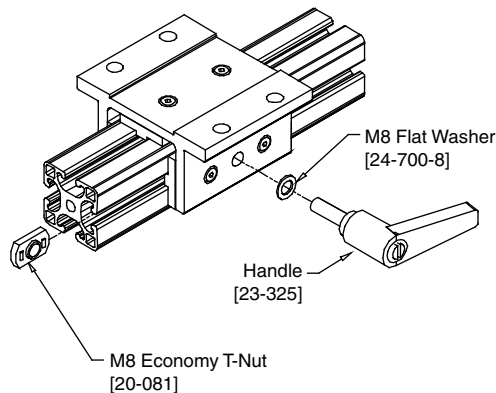
30-0015

Application

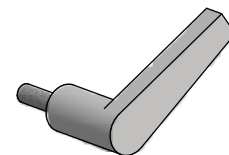
For use on applications where a locking handle is desired, particularly on profile slide blocks. A 9mm hole is required to mount the ratchet lever.

Technical Data

Fiber reinforced techno-polymer plastic with metal insert. Hardware varies with application.



Ratchet Lever



23-325

Ordering Information

Description	Unit	Weight	Part #
Ratchet Lever M8 x 16	Each	87 g	23-316
Ratchet Lever M8 x 20	Each	43 g	23-320
Ratchet Lever M8 x 25	Each	45 g	23-325
Ratchet Lever M8 x 40	Each	50 g	23-340
Ratchet Lever M8 x 50	Each	53 g	23-350
Ratchet Lever M8 x 63	Each	57 g	23-363



Clamp Machining

Slide blocks may be pre-drilled for mounting of the clamp. If drilling is desired, specify the machining service number and give the location of the hole(s) to be drilled according to the drawings below.

Ordering Information

Profiles	Hole Size	Machining Service No.
28, 56, 40, 80, 1.5"	Ø0.323"	19-140

Ordering Examples:

Slide block drilled for one clamp

(note the description added to the slide block part number):

30-2822 w/19-140 @ LU

Multiple clamps may be mounted on a slide block. Each clamp requires a hole to be drilled. Note the description and the number of holes is added to the slide block part number.

Guide drilled for two clamps:

30-4008 w/19-140 @ LG and LL

Guide drilled for three clamps:

30-8008 w/19-140 @ LP, LT and LM

