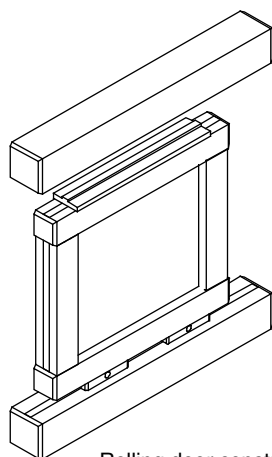
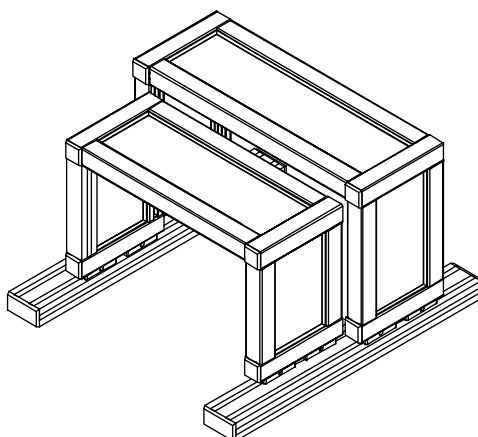


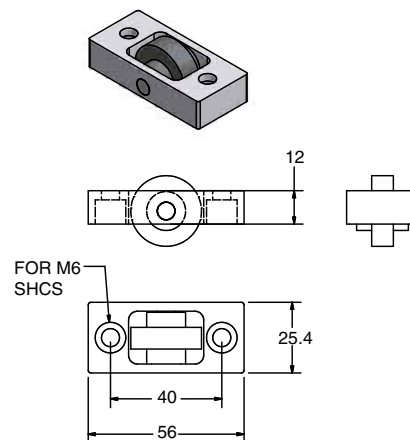
Roller Insert 25



Rolling door constructed with 28 series profiles guided on top with UHMW strip 12-410



Two bypassing covers constructed with 28 series profiles rolling on a pair 30x60 profiles.



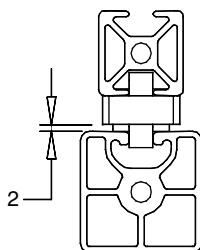
21-065

Application

Versatile roller mounted in a housing. Step roller is available without housing for sliding panel applications.

Technical Data

Roller: Delrin, Black
Housing: Aluminum, Clear Anodized
Pin: Stainless, Steel
Hardware not included



Clearance dimensions

Recommended Hardware

Series	Screws (Order 2)	T-Nut (Order 2)
40	24-314-6	20-190
30	24-312-6	20-190
20	24-310-6	20-190
1.5"	25-108-4	20-193

Ordering Information

Description	Unit	Weight	Part #
Roller Insert 25	Each	32 g	21-065