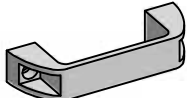
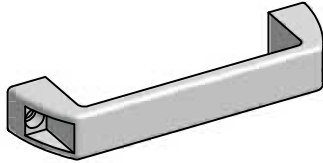


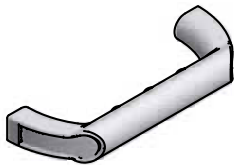
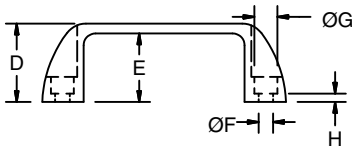
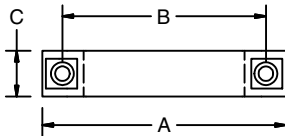
Plastic Handles



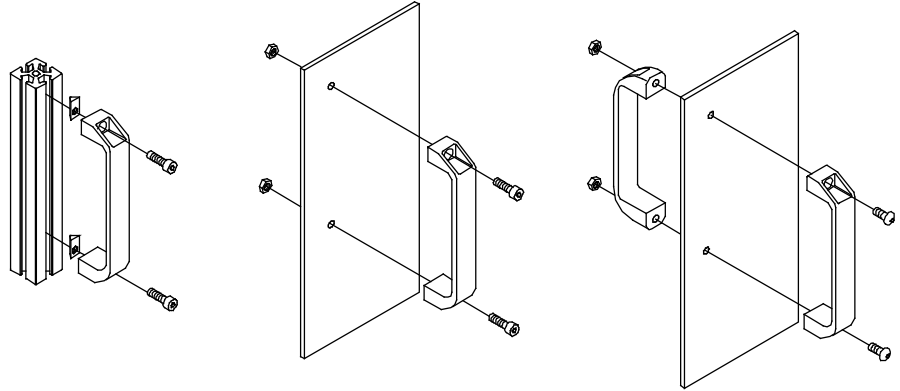
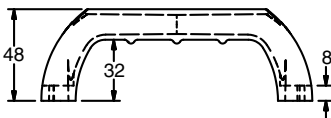
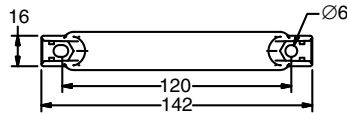
23-033



23-028



23-233



Application

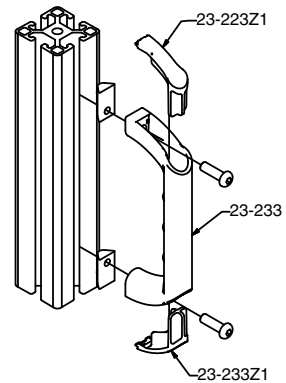
Multipurpose handle for mounting onto panels or profiles. Hardware length is determined by applications.

Technical Data

Glass Filled Nylon, Black

Order Hardware Separately.

Use M6 for 23-033 and 23-028



Recommended Fastening Hardware (Order Separately)

Part #	Series	Screws	T-Nuts
23-033	40	(2) 24-318-6	(2) 20-056
	30	(2) 24-316-6	(2) 20-056
	28	(2) 24-316-6	(2) 20-055
	1.5"	(2) 25-311-4	(2) 25-001 or 20-083
	1"	(2) 25-308-4	(2) 25-031 or 25-034
23-028	40/30	(2) 24-318-6	(2) 20-056
	28	(2) 24-316-6	(2) 20-055
23-233	20	(2) 24-114-5	(2) 20-054

Ordering Information

Dimensions								Weight	Part #
A	B	C	D	E	F	G	H		
112	93.5	21	36	30	6.5	10.5	6	33 g	23-033
170	152	28	52	45	6.5	10.5	8.5	70 g	23-028
See Drawing								26.2 g	23-233
Caps for 23-233 (2 per)								4 g	23-233z1