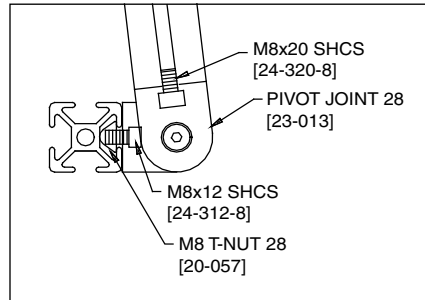
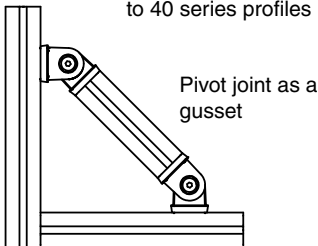


Attaching Pivot Joint 40 to 40 series profiles



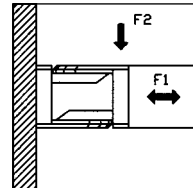
Attaching Pivot Joint 28 to 28 series profiles



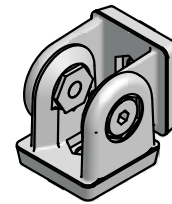
Pivot joint as a gusset

	Load	
	F1 (N)	F2 (N)
23-010: Pivot Joint 40		
Fixed connection	5000	2500
Movable connection	750	750
23-013: Pivot Joint 28		
Fixed connection	1600	800
Movable connection	250	250

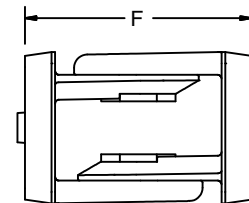
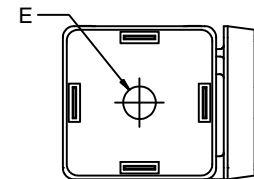
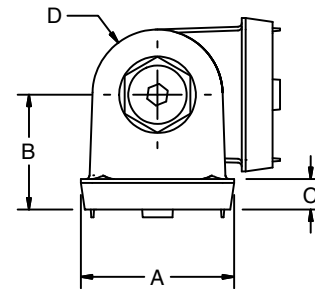
Dimensions (mm or inch)						
Series	A	B	C	∅D	∅E	F
40	40	30	9	40	8.5	60
28/30	28	22.5	7	27	8.3	45
1.5"	1.57"	1.18"	0.16"	1.34"	0.335"	2.36"
1"	1.10"	0.89"	0.28"	1.04"	0.260"	1.78"



Pivot Joint



23-010
23-013
23-260
23-262



Application

For connecting profiles at various angles from 0° to 180°. Eliminates the need for a miter cut. Die cast inserts provide alignment with the profile end and prevents rotation.

Technical Data

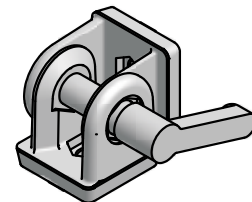
Zinc Die-Cast, Galvanized
 Finishes available: Clear or Black.
 Order all hardware separately

Recommended Fastening Hardware (Order Separately)

Series	Attachment to T-Slot		Attachment to End of Profile
	Screws	T-Nut	Screws
40	24-116-8	20-058	24-120-8
28/30	24-312-8	20-057	24-320-8
1.5"	25-110-5	25-002, 20-082 or 20-182	25-112-5
1"	25-108-4	25-031, 25-034 or 25-036	25-112-4

Ordering Information

Series	Description	Unit	Weight	(Clear)	(Black)
40	Pivot Joint	Each	0.37 kg	23-010	23-010B
	Pivot Joint w/Clamp Handle	Each	0.41 kg	23-014	23-014B
30, 28	Pivot Joint	Each	0.11 kg	23-013	23-013B
	Pivot Joint w/Clamp Handle	Each	0.18 kg	23-015	23-015B
1.5"	Pivot Joint	Each	0.32 kg	23-262	
	Pivot Joint w/Clamp Handle	Each	0.41 kg	23-263	
1"	Pivot Joint	Each	0.11 kg	23-260	
	Pivot Joint w/Clamp Handle	Each	0.18 kg	23-261	



23-014
23-015
23-261
23-263