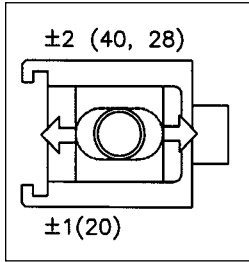
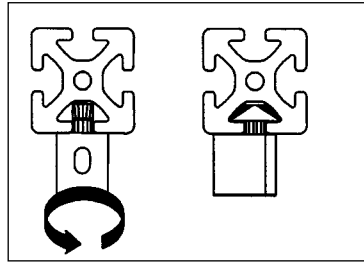


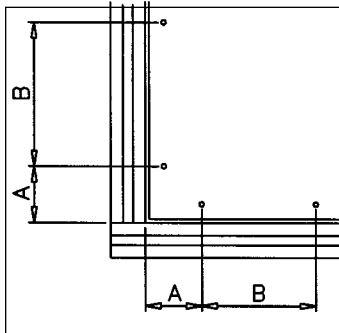
Multiblock PA and Uniblock PA



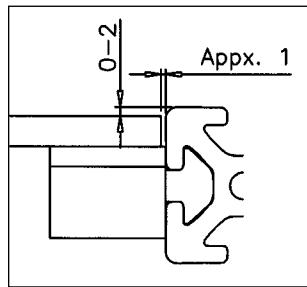
1



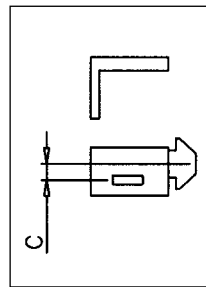
2



3



4



5

- 1 Floating square nut secured within the multiblock by flat spring provides for alignment flexibility
- 2 Insertion of Multiblock PA in the T-slot
- 3-4 Recommended gaps for assembling Multiblocks PA
- 5 Distance between Multiblock center and floating nut

Application

Versatile block for mounting panels and screens. The block locks into the T-slot at a 90° position with an offset design to suit various panel thicknesses. Movable captive nut provides larger alignment range for locating through holes in panels.

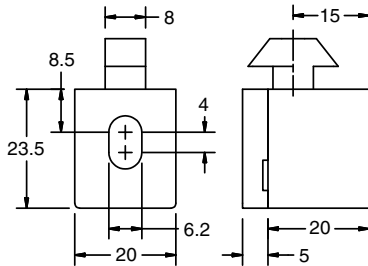
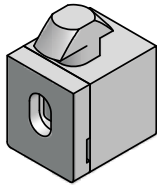
Technical Data

Glass Filled Nylon, Black
 Square Steel Nut, M6 or M4

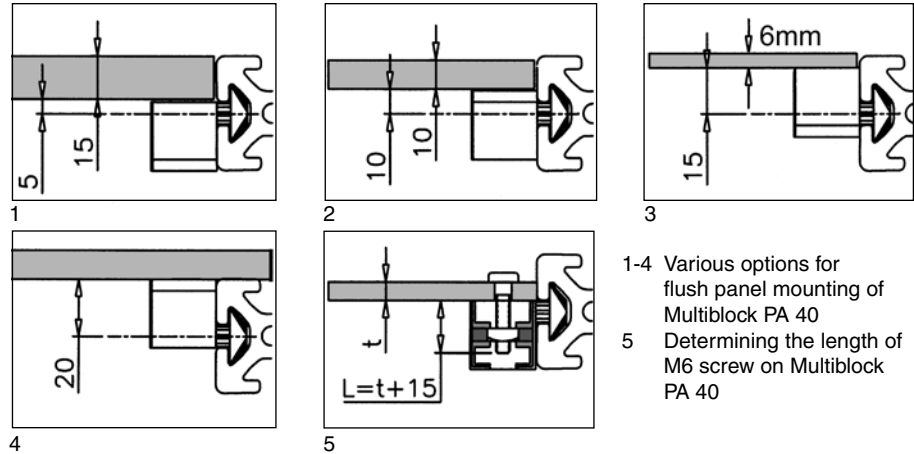
Spacing Table

Profile Series	Max Load N (lbs)	Dimensions		
		A	B	C
40	250 (56)	80	400-600	5
30, 28	210 (47)	70	400-500	2.8
20	100 (22)	60	300-400	2
1.5"	250 (56)	5.0"	20" - 40"	0.20"
1"	100 (22)	2.5"	10" - 15"	0.08"

Multiblock PA 40



22-100

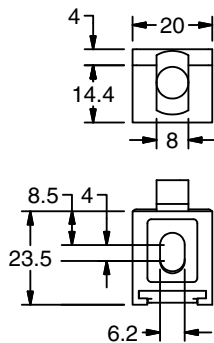
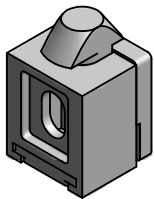


- 1-4 Various options for flush panel mounting of Multiblock PA 40
- 5 Determining the length of M6 screw on Multiblock PA 40

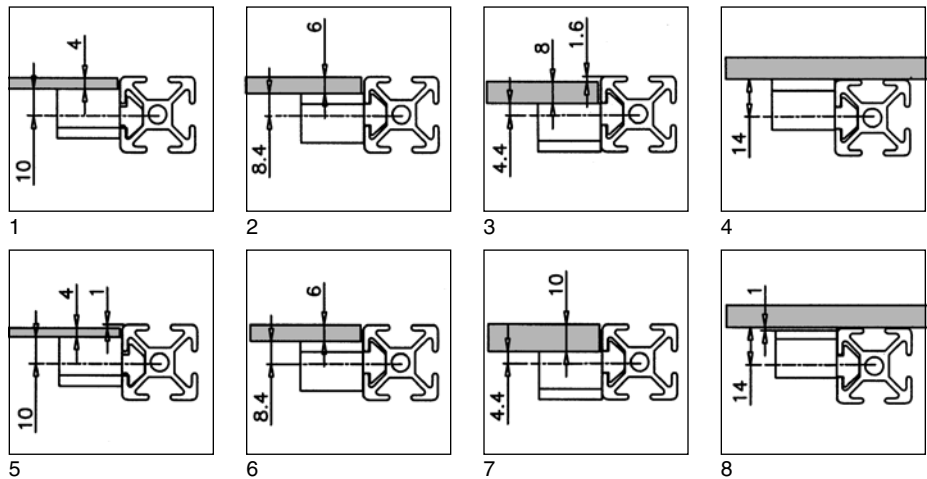
Ordering Information

Series	Description	Unit	Weight	Part #
40	Multiblock PA 40 with M6 Nut	Each	13 g	22-100
40/1.5"	Multiblock PA 40 with 1/4-20 Nut	Each	13 g	22-115

Multiblock PA 30/28



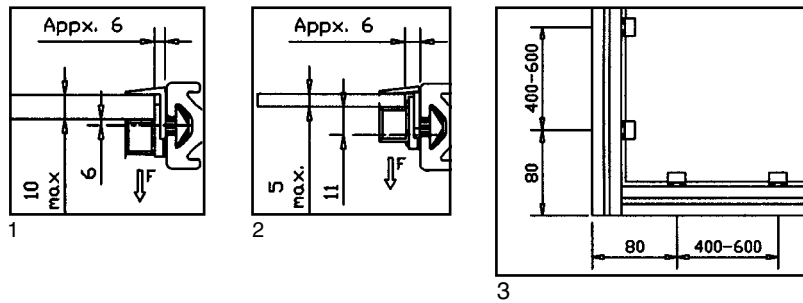
22-103



- 1-4 Mounting options for Multiblock PA 30/28 on 28 series profiles
- 5-6 Mounting options for Multiblock PA 30/28 on 30 series profiles

Ordering Information

Series	Description	Unit	Weight	Part #
28/30	Multiblock PA 30/28 with M6 Nut	Each	10 g	22-103



- 1 Mounting position for panels up to 10mm thick to clamp Multiblock 40.
- 2 Mounting position for panels up to 5mm thick Multiblock rotated 180°
- 3 Edge distance between panel element and profile

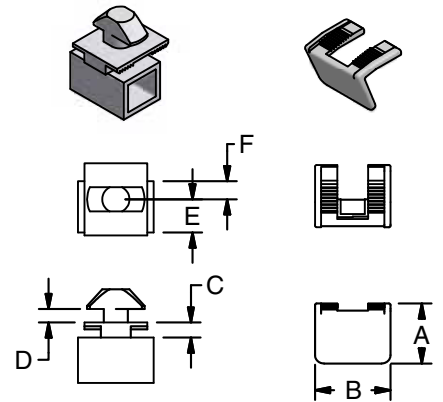
Application

Mounting element for attaching panels to 40, 30 and 28 Series profiles without using additional fasteners or machining the panel. Insert multiblock into T-Slot at any location and lock in position by turning 90° clockwise. Slide locking clip to secure the panel. To remove panel, loosen locking clip with a flat screwdriver.

Technical Data

Glass Filled Nylon (Black)
 For 22-112: Max load in direction F per drawings above is 250N (56lbs); in opposite direction: 50N (11lbs)
 Max Panel Thicknesses
 22-112: 10mm (3/8")
 22-113: 8mm (5/16")

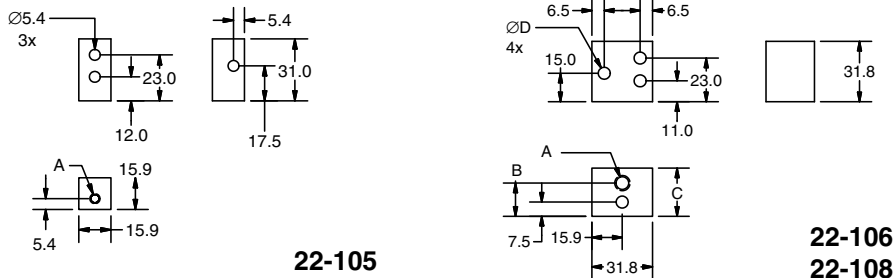
Clamp Multiblock



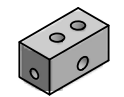
22-112
 22-113

Ordering Information

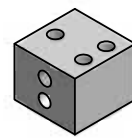
Series	Dimensions (mm)						Weight (g)	Part #
	A	B	C	D	E	F		
40/1.5"	20	25	5	5	11	6	10	22-112
30/28	20	22	5	2	7	-	7	22-113



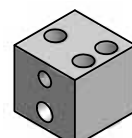
Multiblock AI



22-105



22-106



22-108

Application

Mounting element for panels and accessories. Various mounting dimensions are obtained by rotating the block. Order hardware separately.

Technical Data

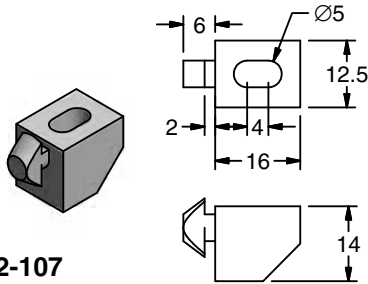
Al, clear anodized
 Max. load at 90° angle to T-slot:
 22-105: 500 N (112 lbs)
 22-106: 750 N (169 lbs)
 22-108: 1000 N (225 lbs)

Ordering Information

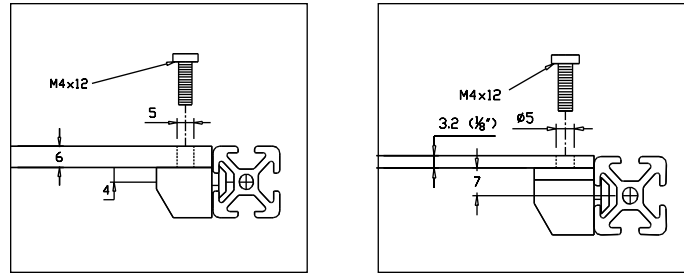
Series	Dimensions (mm)				Weight	Part #
	A	B	C	∅D		
40, 30, 28	M5	—	—	—	18 g	22-105
	M6	17.5	25.4	6.3	58 g	22-106
	M8	22.5	30	8.3	60 g	22-108



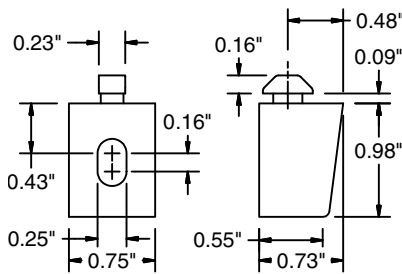
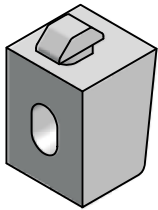
Uniblock PA 20



22-107



Mounting options for Uniblock PA 20

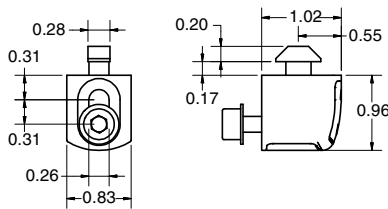
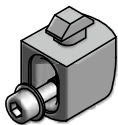


22-116

Ordering Information

Profile Series	Description	Unit	Weight	Part #
20	Uniblock PA 20 with M4 Nut	Each	3 g	22-107
	Multiblock PA 20 with M4 Nut	Each	3 g	22-104
1"	Multiblock PA 1", 1/4-20	Each	3g	22-116

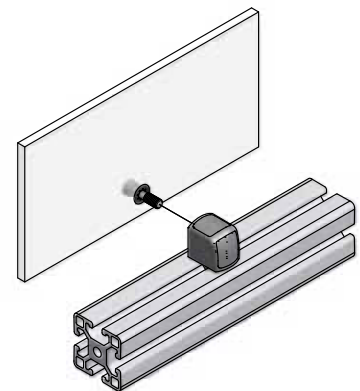
Uniblock 25 CS



22-117

Application

The Uniblock 25 CS includes a captive screw to prevent the loss of hardware when working behind a removable panel. The block locks at a 90° position with an offset for 6-8mm panel thicknesses on 40 and 1.5" Series extrusions.



Ordering Information

Description	Unit	Weight	Part #
Uniblock 25 CS	Each	39 g	22-117