

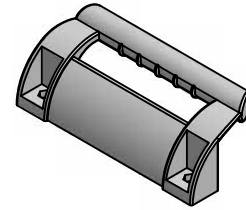
## Light Duty Plastic

### Application

Handle for double doors to keep operators hands from hitting when opening.

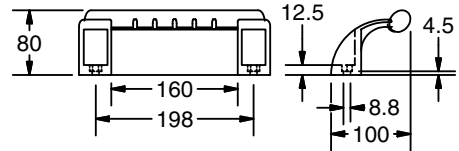
### Technical Data

Glass-Fiber Reinforced Plastic  
 Black Matte Finish



### Recommended Fastening Hardware (Order Separately)

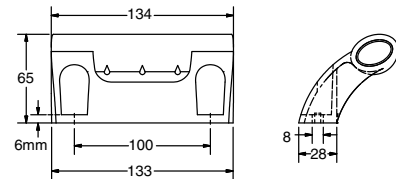
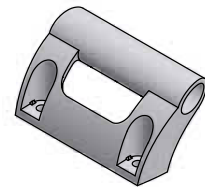
Series	Screws	T-Nuts
40/1.5"	(2) 24-316-8	(2) 20-058
30	(2) 24-312-8	(2) 20-058
28	(2) 24-312-8	(2) 20-057



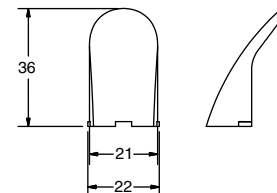
**23-074**

### Ordering Information

Description	Unit	Weight	Part #
Large Angled Handle	Each	356 g	23-074
Open Angled Handle	Each	114g	23-075
Caps for 23-075	Each	3g	23-076



**23-075**



**23-076**