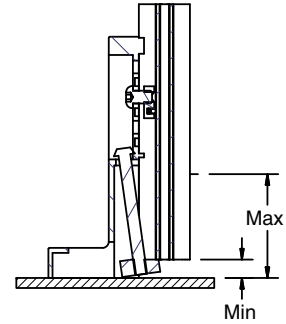
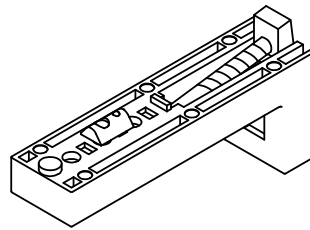
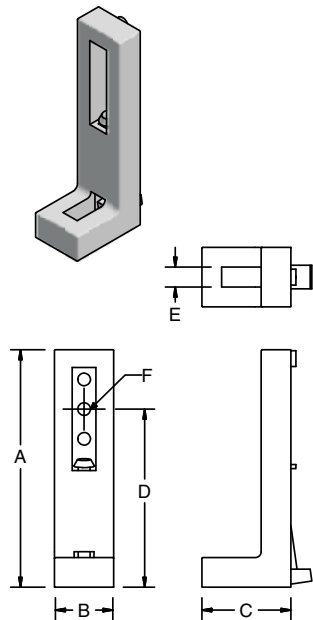


Leveling Foot



Application

Leveling foot for light and heavy duty equipment. Height is adjustable by leveling screw, which is accessed from the top.

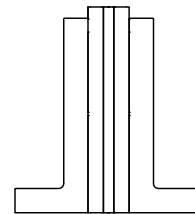
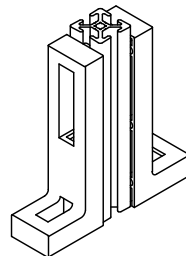
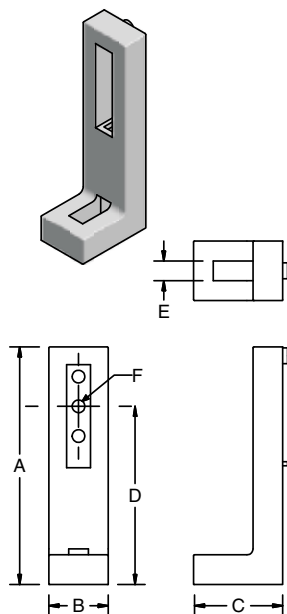
Technical Data

21-022
Base – Zinc Cast, Black Powdercoat
Max Vertical Load – 10,000N (2,250 lbs)
All fastening hardware to attach to profile is included.

Ordering Information

Profile Series	Dimensions						Adjustment		Wt. (kg)	Part #
	A	B	C	D	E	F	Min	Max		
40	160	40	60	120	10	8.3	10	75	0.28	21-022
30	120	30	45	81	10	8.3	8.5	31	0.22	21-022-30
28	120	30	45	81	10	6.4	8.5	31	0.22	21-022-28
1.5"	6.30"	1.57"	0.36"	4.72"	0.394"	0.331"	0.394"	2.00"	0.28	21-415
1"	4.72"	1.18"	1.77"	3.19"	0.394"	0.252"	0.335"	1.125"	0.22	21-416

Floor Anchor



Application

For attachment of light equipment to floors or mounting surface

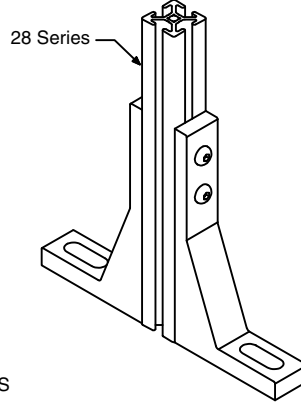
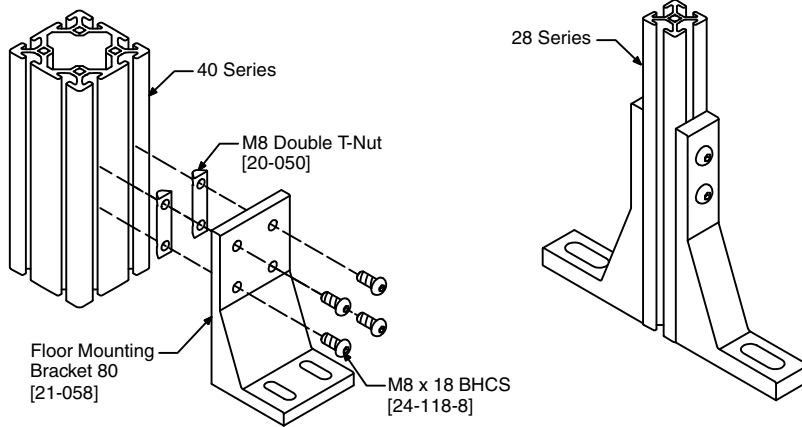
All fastening hardware to attach to profile is included.

Technical Data

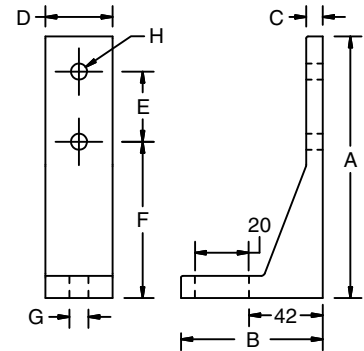
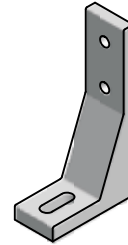
Zinc Cast, Black Powdercoat
Includes all fastening hardware.

Ordering Information

Profile Series	Dimensions						Weight (kg)	Part #
	A	B	C	D	E	F		
40	160	40	60	120	10	8.3	0.28	21-023
30	120	30	45	81	10	8.3	0.22	21-023-30
28	120	30	45	81	10	6.4	0.22	21-023-28
1.5"	6.30"	1.57"	2.36"	4.72"	0.394"	0.331"	0.28	21-060
1"	4.72"	1.18"	1.77"	3.19"	0.394"	0.252"	0.22	21-061



Floor Mounting Brackets



27-057
27-059

Application

Economical bracket for mounting structures to floor or mounting surface

Technical Data

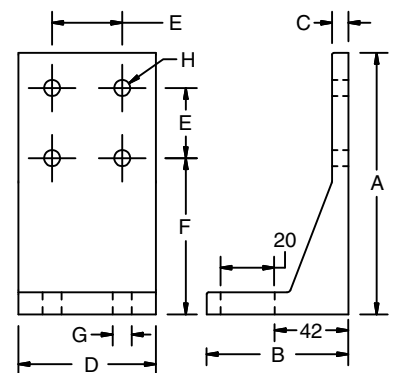
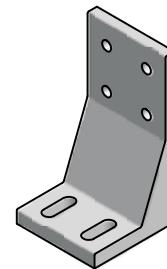
Aluminum, Clear Anodized
 Metric series hole dia. is 8.8mm.
 Inch series hole dia. is 0.28".

Recommended Hardware

Series	Screws	T-Nuts	Double T-Nuts*
40	24-118-8	20-058	20-050
30	24-118-8	20-058	20-050
28	24-116-8	20-057 or 20-091	—
1.5"	25-112-5	25-002, 20-082 or 20-182	25-041 or 25-046
1"	25-110-4	25-031 or 25-034	—

Ordering Information

Series	A	B	C	D	E	F	G	∅H	Wt. (kg)	Part #
40, 1.5"	142	77	9	38	40	82	10	10	0.28	27-057
	142	77	9	76	40	82	10	10	0.57	27-058
30/28, 1"	142	77	9	28	28 25.4	82	10	9 7	0.19	27-059
	142	77	9	50.8	28 25.4	82	10	9 7	0.35	27-060



27-058
27-060

Economy Floor Mounting Brackets

Application

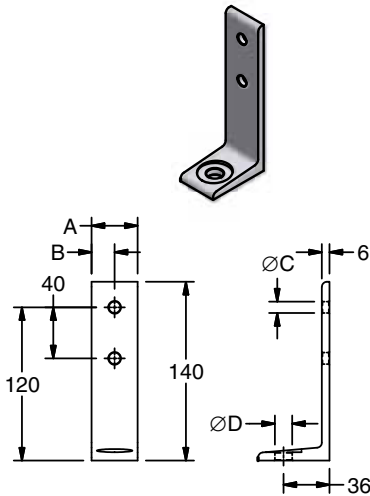
Economical light duty floor mounting brackets for 20, 30, 40, 1" and 1.5" Series profiles. Securely mounts structures to floor or mounting surface.

Technical Data

Aluminum, Anodized

Recommended Hardware

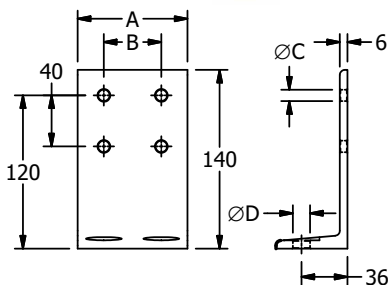
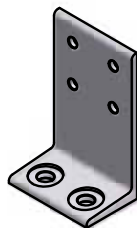
Series	Screws	T-Nuts
40	24-116-8	20-058 or 20-081
30	24-114-6	20-056 or 20-090
20	24-112-5	20-045 or 20-085
1.5"	25-112-5	25-002 or 20-082
1"	25-108-4	25-031 or 25-034



- 28-501
- 28-502
- 28-503
- 28-504
- 28-505

Ordering Information

Profile	Style	A	B	ØC	ØD	Weight	Part #
40	Single	36.0	18.0	9.0	13.5	115 g	28-505
	Double	76.0	40.0	9.0	13.5	245 g	28-510
30	Single	27.0	13.5	7.0	11.0	87 g	28-503
	Double	57.0	30.0	7.0	11.0	185 g	28-508
20	Single	18.0	9.0	5.5	9.0	60 g	28-501
	Double	38.0	20.0	5.5	9.0	125 g	28-506
1.5"	Single	34.0	17.0	9.0	13.5	108 g	28-504
	Double	72.0	38.0	9.0	13.5	230 g	28-509
1"	Single	23.0	11.5	7.0	9.0	75 g	28-502
	Double	48.0	25.1	7.0	9.0	156 g	28-507



- 28-506
- 28-507
- 28-508
- 28-509
- 28-510