

Application

Heavy duty flange foot for attaching structures to floor. Tapped holes in base can be used for leveling.

Universal Flange Feet are machined to accommodate both the 40 and 1.5" Series profiles only.

Technical Data

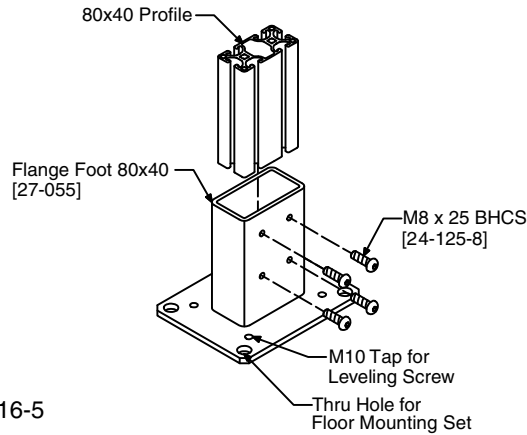
Steel, Black Finish

Order Hardware Separately

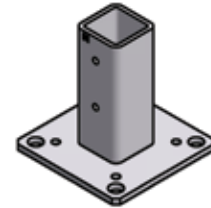
For clamping Profile use 24-125-8 or 25-116-5

For Leveling use 24-525-10F

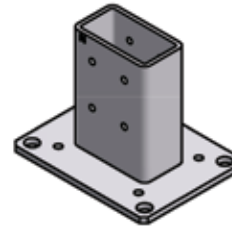
Floor Fastening Set 21-032 includes wedge anchor, washer and hex nut.



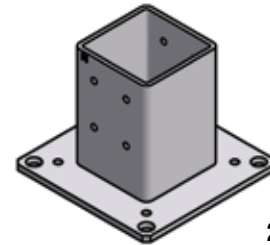
Flange Feet



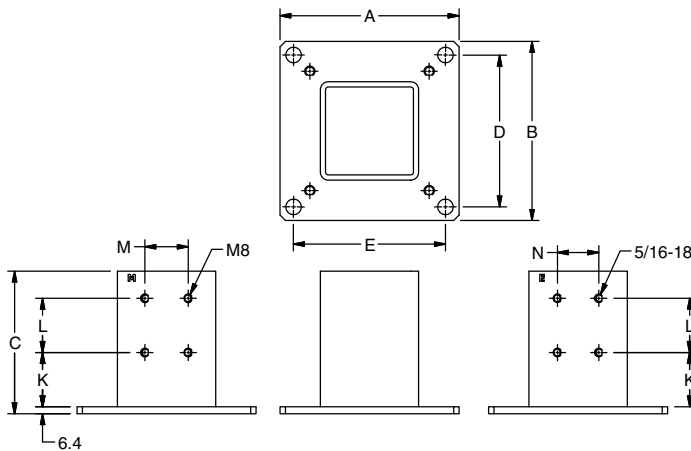
27-050



27-055



27-056



Ordering Information

Profile Size	Dimensions (mm)										Weight (kg)	Part #
	A	B	C	D	E	F	K	L	M	N		
40 x 40 1.5" x 1.5"	125	125	128	100	100	14.3	50	50	—	—	1.55	27-050
80 x 40 3" x 1.5"	165	127	125	100	140	14.3	50	50	40	38.1	2.19	27-055
80 x 80 3" x 3"	165	165	125	140	140	14.3	25	50	40	38.1	2.79	27-056