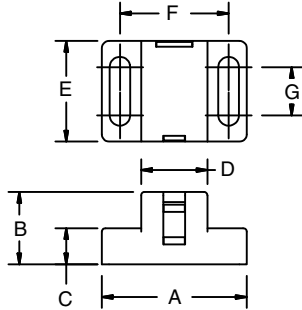
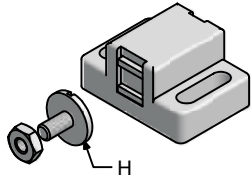
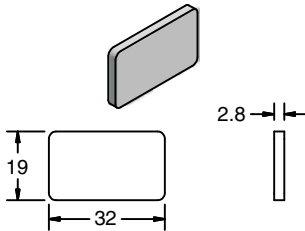


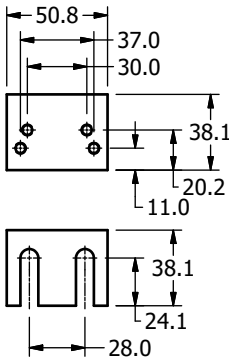
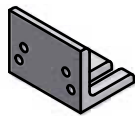
Magnetic Catches



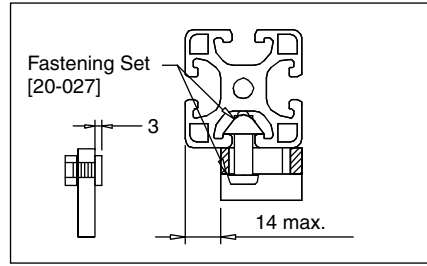
23-045
23-046



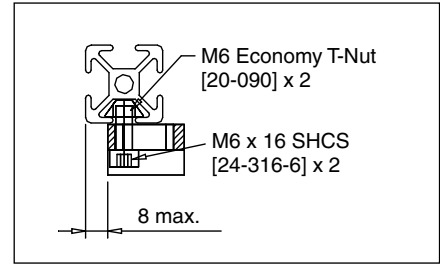
23-051



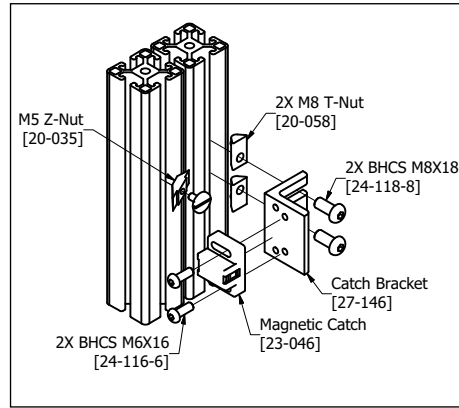
27-146



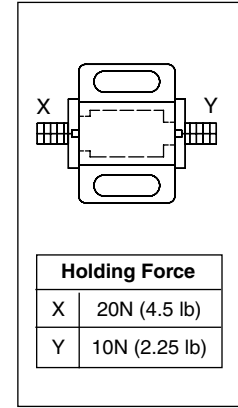
1



2



3



4

- 1 Mounting of 40 Series profile
- 2 Mounting of 28 Series profile
- 3 Assembly of Bracket on 40 Series profile
- 4 Holding force

Holding Force	
X	20N (4.5 lb)
Y	10N (2.25 lb)

Application

Quick catch for swinging or sliding doors. For different holding strengths, rotate catch 180°. Adjustable mounting position using slotted holes and appropriate mounting bracket if needed. Complete with pan head screw, or add optional plate for smooth mounting

Technical Data

Magnetic Catch: Glass Filled Nylon
 Strike Plate: Steel, Zinc Plated with pressure sensitive adhesive backing.
 Mounting Bracket: Aluminum, Clear Anodized.

Recommended Fastening Hardware* (Order Separately)

Series	Screws	T-Nuts
40	(2) 24-120-6	(2) 20-056
28/30	(2) 24-316-6	(2) 20-090
20	(2) 24-110-4	(2) 20-044
1.5"	25-112-4	25-001, 20-083 or 20-193
1"	25-108-2	25-030, 20-088 or 25-035

Ordering Information

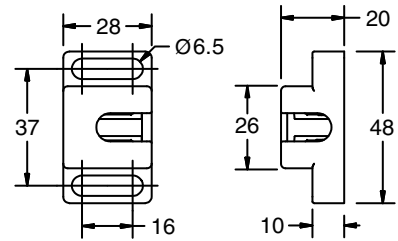
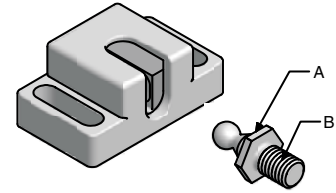
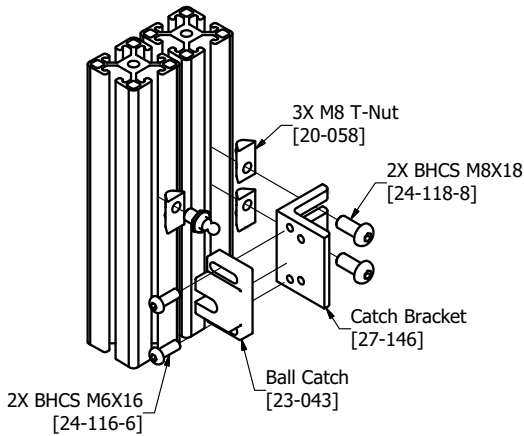
Series	A	B	C	D	E	F	G	H	Weight	Part #
40, 30, 28, 1.5"	40	20	10	18.32	27.8	30	12.9	M5x12	38 g	23-046
20, 1"	28	14	6	12	17	20	7.7	M4x5	9 g	23-045
All	See drawing								8 g	23-051

Bracket

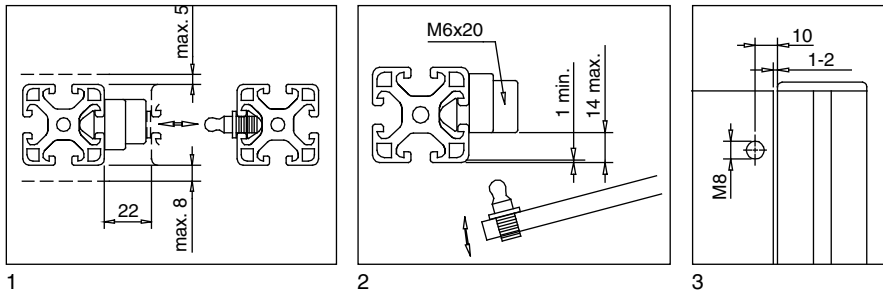
Use w/Catch	Description	Thread	Unit	Weight	Part #
23-046	Single Bracket 40	M6	Each	60 g	27-146



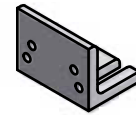
Ball Catch PA



**23-043
 23-121**



- 1 Attachment to a sliding door
- 2 Attachment to a swinging door
- 3 Mounting dimensions



Application

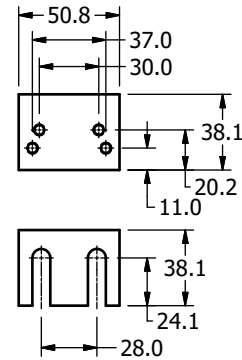
Catch for use on swinging and sliding doors. Brackets can be used to mount the catch in the location that you desire.

Technical Data

Housing: Glass-filled Nylon, Black
 Ball Screw: Stainless Steel
 Bracket: Aluminum, Anodized
 Holding Force: 6.7 - 11 lbs

Recommended Fastening Hardware (Order Separately)

Part #	Screws	T-Nuts
23-043 + 27-146	(2) 24-114-8 and (2) 24-114-6	(3) 20-058
23-043 only	(2) 24-114-6	(1) 20-056
23-121 + 27-146	(2) 25-110-5 and (2) 25-112-4	(2) 25-002 or (1) 25-042 plus (1) 25-001



27-146

Ordering Information

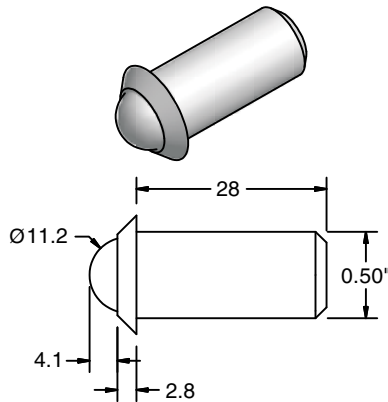
Series	Description	A (Hex)	B (Thread)	Unit	Weight	Part #
40	Ball Catch	13	M8	Each	23 g	23-043
40/1.5"	Ball Catch	1/2"	1/4-20	Each	29 g	23-121

Bracket

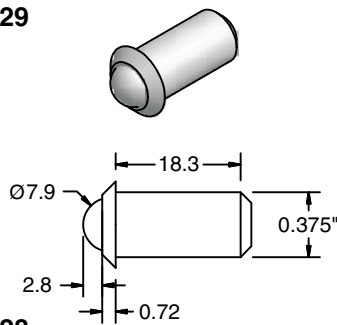
Description	Thread	Unit	Weight	Part #
Catch Bracket 40/1.5"	M6	Each	60 g	27-146



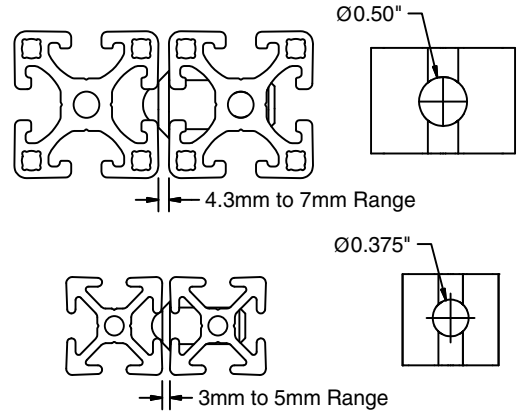
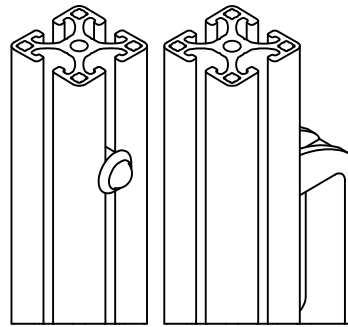
Ball Plungers



23-129



23-128



Application

An economical solution to hold swinging doors closed. The ball plunger presses easily into a machined hole in the extrusion, and the force of the ball in combination with a T-Slot on the door frame holds the door closed.

Ordering Information

Profile Series	Description
40, 30	Ball Plunger, 1/2" Dia. x 28mm
28	Ball Plunger, 3/8" Dia x 18mm

* Requires service 19-022

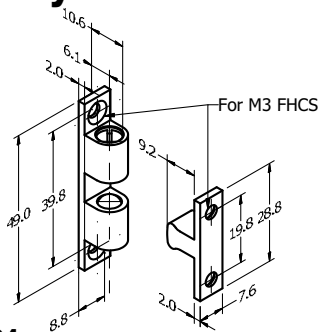
Technical Data

Housing: Steel, Black Oxide
Ball: Nylon

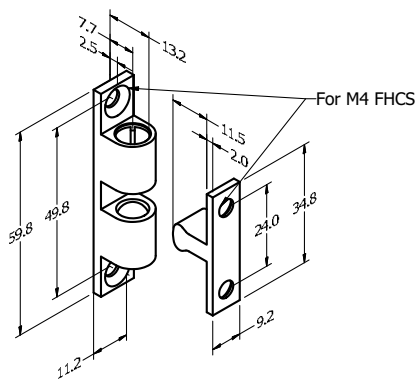
Part#	Holding Force
23-128	5-14 lbs.
23-129	8-18 lbs.

Unit	Weight	Part #
Each	22.7 g	23-129*
Each	13.6 g	23-128*

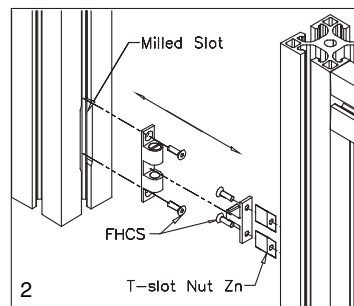
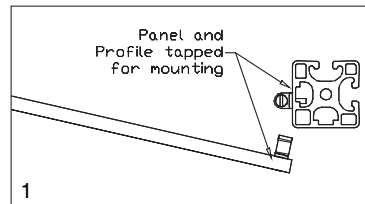
3-Way Ball Catch



23-004



23-012

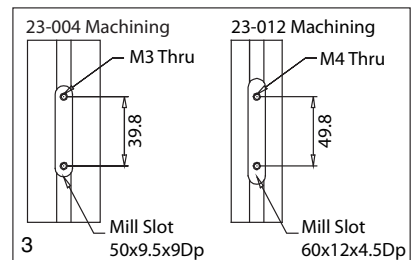


Application

Universal door catch for swinging and sliding doors in small and medium load ranges. Can be mounted in serviced slot for flush closing.

Description

3-Way Ball Catch, Small
3-Way Ball Catch, Medium



- 3-Way Ball Catch on swinging door
- 3-Way Ball Catch on sliding door
- Servicing of the slot for 23-004 on 40 Std or 28/30 series profiles for sliding doors. For 40 series Heavy or Light profiles mill slot 58x9.5x12.3 Dp.

Technical Data

Brass, chrome finish with two steel balls for adjustable spring tension

Order all hardware separately

Part # 23-004	(4) 24-210-3
Part # 23-012	(4) 24-208-4

Unit	Weight	Part #
1 set	26 g	23-004
1 set	40 g	23-012