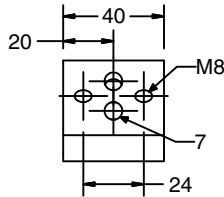
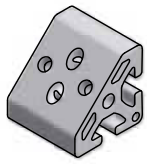
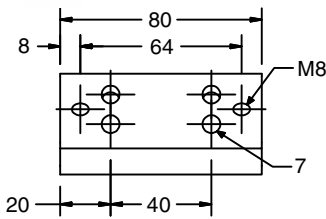
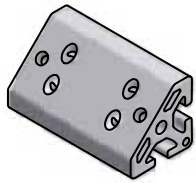


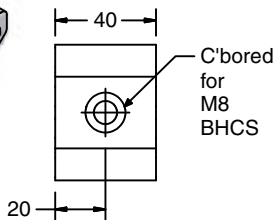
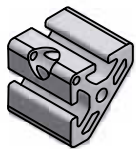
Corner Elements



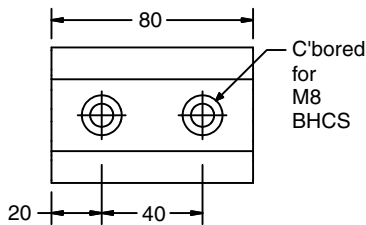
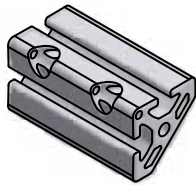
21-035



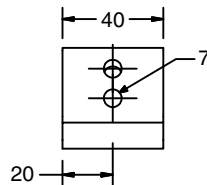
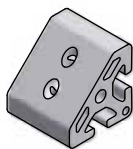
21-036



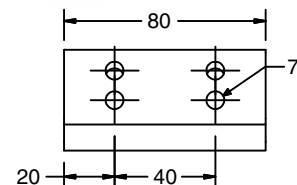
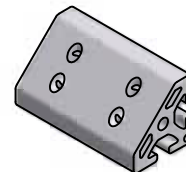
21-037



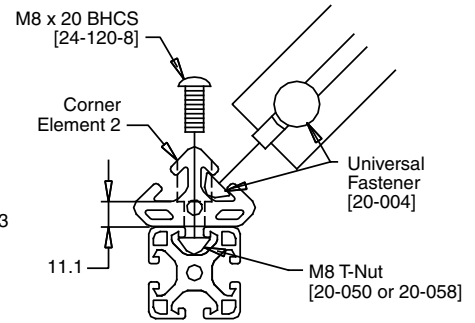
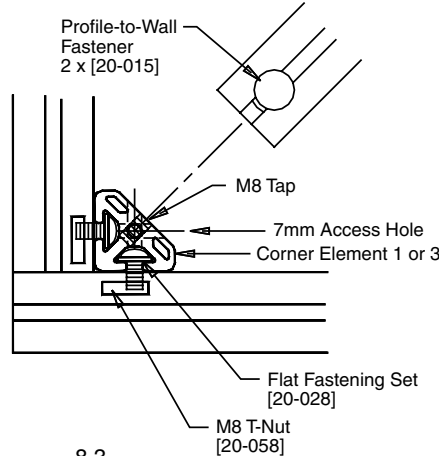
21-038



21-135



21-136



Application

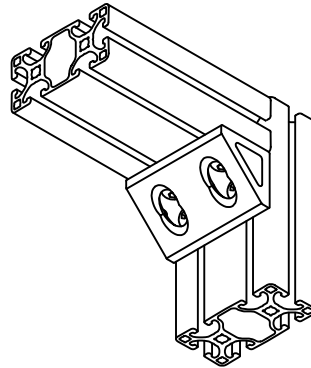
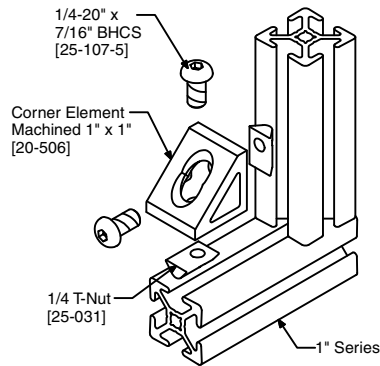
Designed for attaching profiles at 45°. Ideal for trusses, bracing and supports.

Technical Data

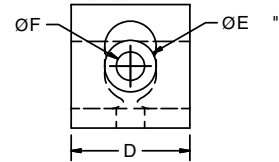
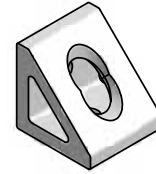
Aluminum, Clear Anodized

Ordering Information

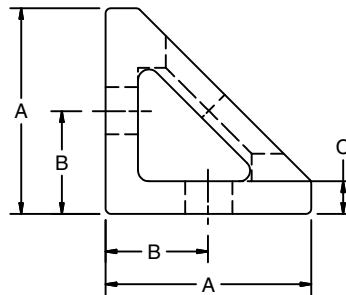
Series	Description	Unit	Weight	Part #
40	Corner Element 1, 40	Each	71 g	21-035
	Corner Element 1, 80	Each	45 g	21-036
	Corner Element 2, 40	Each	67 g	21-037
	Corner Element 2, 80	Each	133 g	21-038
	Corner Element 3, 40	Each	73 g	21-135
	Corner Element 3, 80	Each	150 g	21-136
	End Cap 40 x 40-45°	Each	6 g	18-820



Machined Corner Elements



20-2828M
20-4040M
20-506
20-508



Application

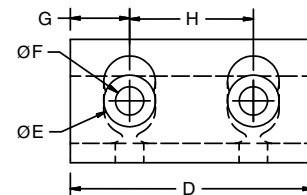
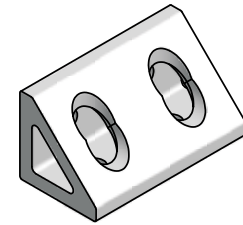
These corner brackets provide a high strength, accurate right angle connection between two profiles, while providing a low profile, aesthetically pleasing look.

Technical Data

Aluminum, Clear Anodized

Recommended Fastening Hardware (Order Separately)

Series	Screws	T-Nuts	Double T-Nuts (if applicable)
40	24-116-8	20-058, 20-081 or 20-181	20-050
28	24-112-6	20-056, 20-090 or 20-190	—
1.5"	25-110-5	25-002, 20-082 or 20-182	25-041 or 25-046
1"	25-107-4	25-031, 25-034 or 25-036	25-032 or 25-037



20-2856M
20-4080M
20-507
20-509

Ordering Information

Series	A	B	C	D	E	F	G	H	Wt.	Part #
40	38	20	6	35	15	8.5	—	—	64 g	20-4040M
	38	20	6	75	15	8.5	17.5	40	136 g	20-4080M
28	27	14	5	25	11	7	—	—	23 g	20-2828M
	27	14	5	53	11	7	12.5	28	50 g	20-2856M
1.5"	1.496"	0.75"	0.177"	1.25"	0.63"	0.34"	—	—	64 g	20-508
	1.496"	0.75"	0.177"	2.75"	0.63"	0.34"	0.72"	1.50"	136 g	20-509
1"	1.000"	0.50"	0.236"	0.88"	0.44"	0.28"	—	—	23 g	20-506
	1.000"	0.50"	0.236"	1.88"	0.44"	0.28"	0.47"	1.00"	50 g	20-507

