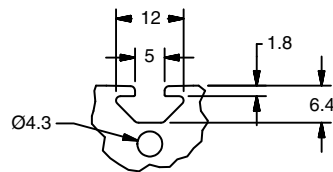


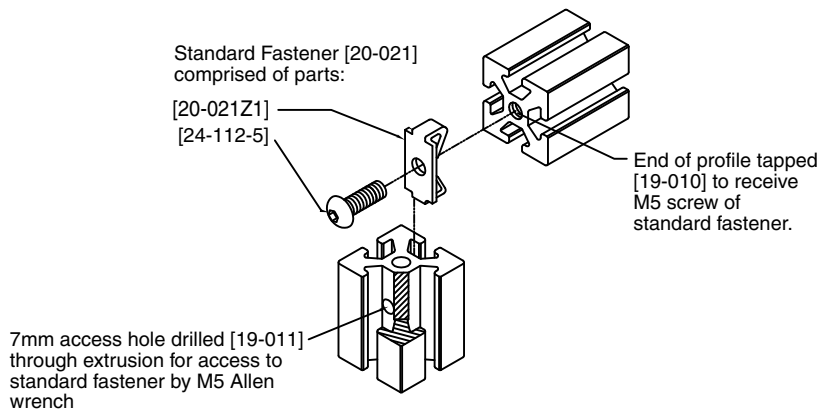
20 Series Profiles

Part #	Description	Moment of Inertia		Section Modulus		Section [cm ²]	Weight [kg/m]	Cat. Page
		I _x [cm ⁴]	I _y [cm ⁴]	W _x [cm ³]	W _y [cm ³]			
12-120	Profile 20x10	0.12	0.53	0.22	0.53	1.29	0.35	42
12-020	Profile 20x20	0.73	0.73	0.73	0.73	1.80	0.52	42
12-040	Profile 40x40 20 Series	8.74	8.74	4.37	4.37	4.83	1.32	43
12-124	Profile 20x40	1.33	5.03	1.33	2.52	3.16	0.86	42

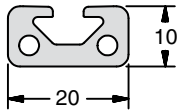
T-Slot Detail



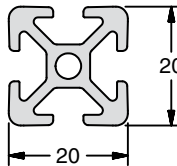
Service



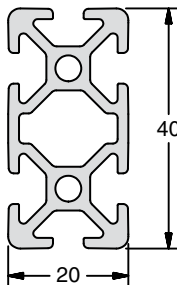
20x10, 20x20 & 40x20 Profiles



12-120



12-020



12-124

Application

20 Series profiles are designed for light duty enclosures and fixtures. They are also useful in building light accessories and components on workstations or assembly tables. The 5mm T-slot requires 20 Series hardware.

Technical Data

Aluminum, Clear Anodized (See Technical Data page 9 for full material and finish specifications)

Part #	I_x [cm ⁴]	I_y [cm ⁴]	W_x [cm ³]	W_y [cm ³]	Section [cm ²]	Weight [kg/m]
12-120	0.12	0.53	0.22	0.53	1.29	0.35
12-020	0.73	0.73	0.73	0.73	1.80	0.52
12-124	1.33	5.03	1.33	2.52	3.16	0.86

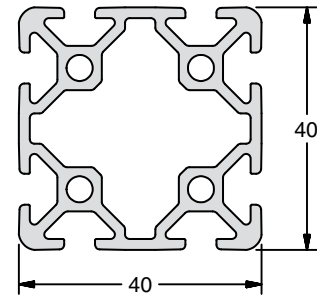
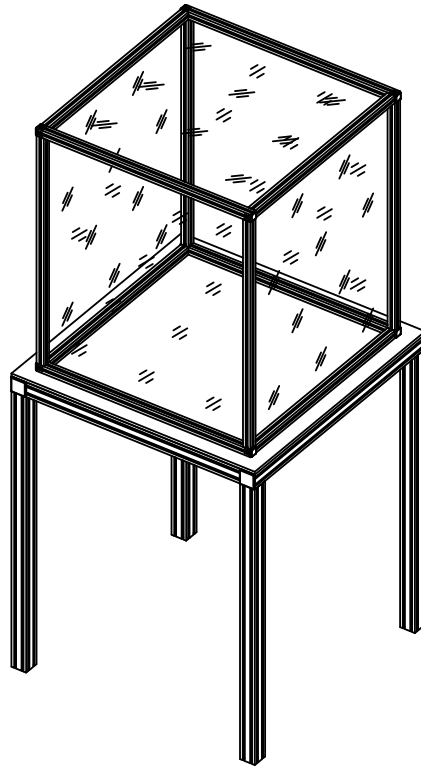
Ordering Information

Description	Unit	Part # (Clear)
Profile 20x10	Cut off max. 3m	12-120
Profile 20x20	Cut off max. 3m	12-020
Profile 20x40	Cut off max. 3m	12-124
*Saw Cut Needed for Cut to Length		19-001

Quick Reference for Mating Components

Fasteners		End Caps	
Standard Fastener	20-021	20x10	18-830
		20x20	18-802
		20x40	18-831

40x40 Profile



12-040

Application

20 Series profiles are designed for light duty enclosures and fixtures. They are also useful in building light accessories and components on workstations or assembly tables. The 5mm T-Slot requires 20 Series hardware.

Technical Data

Aluminum, Clear Anodized (See Technical Data page 9 for full material and finish specifications)

Part #	I_x [cm ⁴]	I_y [cm ⁴]	W_x [cm ³]	W_y [cm ³]	Section [cm ²]	Weight [kg/m]
12-040	8.74	8.74	4.37	4.37	4.83	1.32

Ordering Information

Description	Unit	Part # (Clear)
Profile 40x40, 20 Series	Cut off max. 4m	12-040
*Saw Cut Needed for Cut to Length		19-001

Quick Reference for Mating Components

Fasteners		End Caps	
Standard Fastener	20-021	40x40	18-832
T-Nuts			
Roll-In Single M4	20-044		
Roll-In Single M5	20-045		