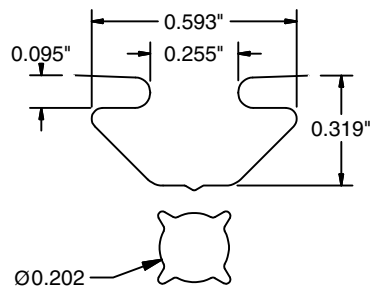


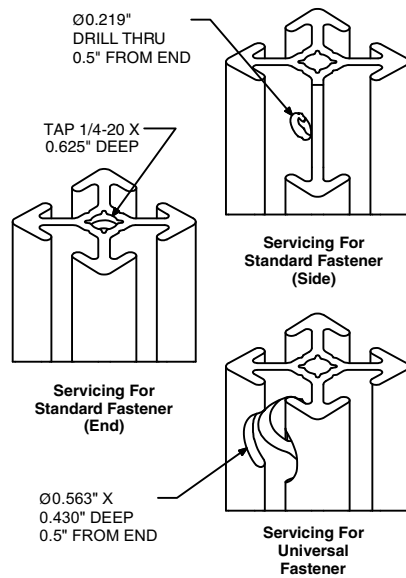
1" Series

Part #	Description	Moment of Inertia		Section Modulus		Section [cm ²]	Weight [kg/m]	Page
		I _x [cm ⁴]	I _y [cm ⁴]	W _x [cm ³]	W _y [cm ³]			
12-1010	Profile 1" x 1"	1.91	1.91	1.51	1.51	2.84	0.77	52
12-1020	Profile 2" x 1"	3.62	13.03	2.85	5.13	5.16	1.41	52
12-2020	Profile 2" x 2"	23.68	23.68	9.32	9.32	8.13	2.21	52

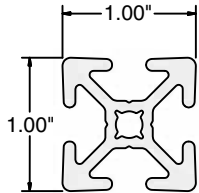
T-Slot Detail



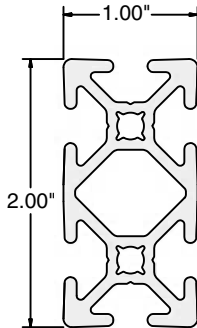
Service



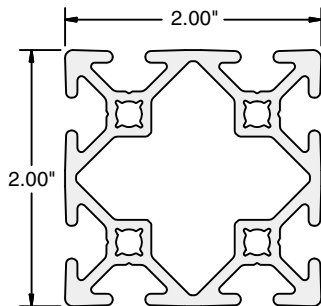
1" x 1", 2" x 1" and 2" x 2" Profiles



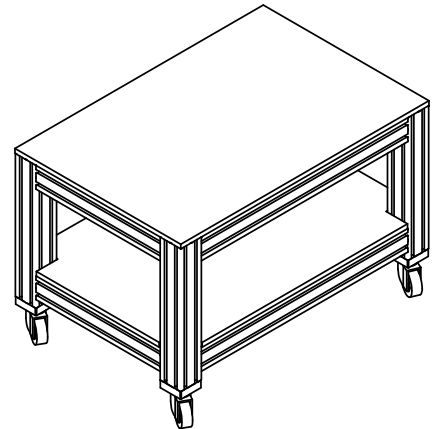
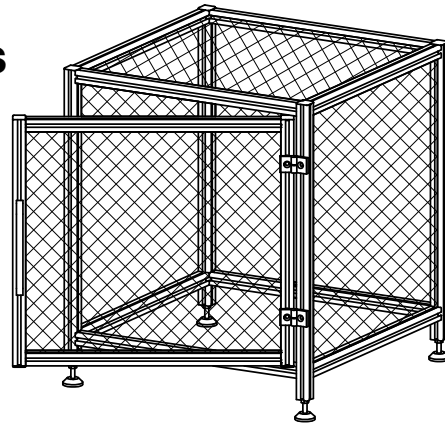
12-1010



12-1020



12-2020



Application

1" Series profiles are designed for safety guards, enclosures, shelves, and other light to medium duty applications. T-Slots on four sides allows for effortless mounting of accessories directly onto the structure without additional machining.

The T-slot is smaller than the 1.5" Series, requiring different hardware. With profile 12-1020, higher rigidity can be attained by orienting the extrusion on its 'y' axis.

The 12-2020 profiles are ideal for support and post applications. With their higher rigidity, structures can be built with higher stability.

Technical Data

Aluminum, Clear Anodized (See Technical Data page 9 for full material and finish Specification)

Part #	I_x [cm ⁴]	I_y [cm ⁴]	W_x [cm ³]	W_y [cm ³]	Section [cm ²]	Weight [kg/m]
12-1010	1.91	1.91	1.51	1.51	2.84	0.77
12-1020	3.62	13.03	2.85	5.13	3.16	1.41
12-2020	23.68	23.68	9.32	9.32	8.13	2.21

Ordering Information

Description	Unit	Part #
1" x 1" Profile	Cut off max. 240 in	12-1010
2" x 1" Profile	Cut off max. 240 in	12-1020
2" x 2" Profile	Cut off max. 240 in	12-2020
* Saw Cut Needed for Cut to length		19-001

Quick Reference for Mating Components

Fasteners		Structural Accessories	
1" Standard Fastener	25-022	Levelers	pg 156
1" Universal Fastener	25-023	Casters	pg 167
End Caps		Plates	pg 102
1" x 1" (for 12-1010)	18-1010	Gussets	pg 104
2" x 1" (for 12-1020)	18-1020		
2" x 2" (for 12-2020)	18-2020		

