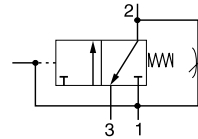


Global Air Preparation System

Combined Soft Start / Dump Valve



Symbol



- Modular design with 1/4" or 1/2" integral ports (NPT, BSPP & BSPT)
- Provides for the safe introduction of pressure
- The 3-way, 2-position function automatically dumps downstream pressure on the loss of pilot signal
- Adjustable slow start
- Solenoid or air pilot options
- High flow & exhaust capability
- Silencer included

Parker Global Series Combined Soft Start / Dump Valves, provide for the safe introduction of pressure to machines or systems. Soft Start / Dump Valves when set, allow the pressure to gradually build to the set point before fully opening to deliver full flow at line pressure.

The controlled introduction of pressure can be an important safety factor and prevent damage to tooling when air pressure is introduced at machine or system start up.

To maintain these units in the open position a pilot supply to the air pilot operated version or an electrical signal to the solenoid operated version must be maintained. The valve will automatically dump when the holding signal is removed.

Options:

P31T		A	9	2	S	G	N	Solenoid type only	
Body size		Engr level			Actuator interface		Solenoid voltage		
Soft start / dump valve (1/4")	P31T	Current	A			G 15mm solenoid (P31 only)	2CN 24VDC non locking manual override		
Soft start / dump valve (1/2")	P32T	Thread type				C 30mm solenoid	3GN 120VAC non locking manual override		
		BSPP 1				P Threaded air pilot	1FN 120VAC non locking manual override (P31 series only)		
		BSPT 2				Pilot type		Solenoid type	
		NPT 9				P External air pilot	C 15mm (P31 series only)		
		Port size				S Solenoid pilot	A 30mm CNOMO coil (P32 only)		
		Global modular mini (1/4") 2							
		Global modular compact (1/2") 4							

Note: P32 unit used for both P32 & P33 series
 Bold items are most common.

Port size	Description	Order code†	Flow‡ dm³/s (scfm)	Max. bar (psig)	Height mm (inches)	Width mm (inches)	Depth mm (inches)	Weight
1/4"	120VAC Solenoid & cable plug	P31TA92SGNC1FN	17 (36)	10 (150)	115.6 (4.5)	57 (2.2)	40 (1.5)	0.37kg (0.8lbs)
1/4"	24VDC Solenoid & cable plug	P31TA92SGNC2CN	17 (36)	10 (150)	166‡ (6.5)	57 (2.2)	40 (1.5)	0.41kg (0.9lbs)
1/4"	External air pilot operated	P31TA92PPN	17 (36)	17 (250)	115.6 (4.5)	57 (2.2)	40 (1.5)	0.37kg (0.8lbs)
1/2"	120VAC 30mm coil & cable plug included	P32TA94SCNA3GN	46 (97)	10 (150)	162.5‡ (6.3)	88 (3.4)	57.2 (2.2)	0.87kg (1.9lbs)
1/2"	24VDC 30mm coil & cable plug included	P32TA94SCNA2CN	46 (97)	10 (150)	227.5‡ (8.9)	88 (3.4)	57.2 (2.2)	0.91kg (2.0lbs)
1/2"	External air pilot operated	P32TA94PPN	46 (97)	17 (250)	162.5‡ (6.3)	75 (2.9)	57.2 (2.2)	0.87kg (1.9lbs)

‡ Includes exhaust silencer. Flow with 6.3 bar (91.3 psig) inlet and 1 bar (14.5 psig) pressure drop.
 † Standard part numbers shown in bold. For other models refer to Options chart above.



Global Air Preparation System

Technical Information

Fluid:	Compressed air	
Max. pressure solenoid operated:	10 bar (150 psig)	
Max. pressure air pilot operated:	17 bar (250 psig)	
Min. operating pressure:	3 bar (44 psig)	
Temperature Max.* solenoid operated:	-10°C to 50°C (14°F to 122°F)	
Temperature Max.* air pilot operated:	-20°C to 80°C (-4°F to 176°F)	
Air pilot port:	1/8"	
Exhaust port:	P31T - 1/4" / P32T - 1/2"	
Typical flow with 6.3 bar inlet pressure and 1 bar pressure drop:	P31T	17 dm ³ /s (36 scfm)
	P32T	48 dm ³ /s (101 scfm)

* Air supply must be dry enough to avoid ice formation at temperatures below +2°C
Snap pressure: Full flow when downstream pressure reaches 50% of the inlet pressure

Material Specifications

Body:	Aluminum
Body cover:	Polyester
Seals:	Nitrile NBR

Mounting Brackets

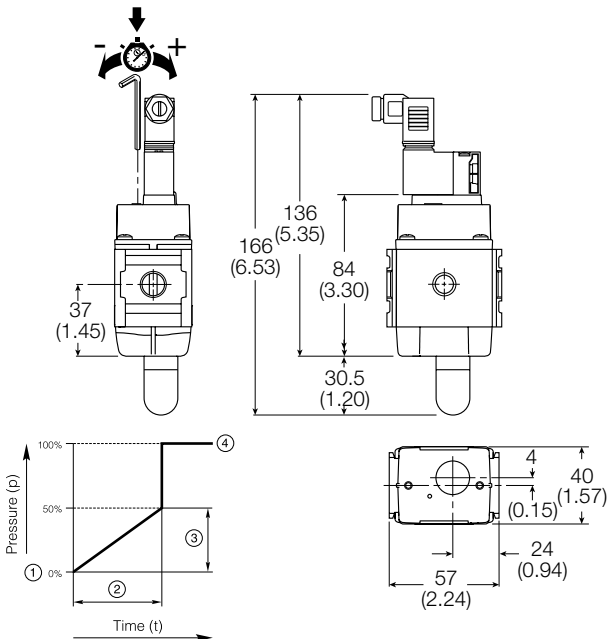
Description	Order code
	P31T
L-bracket mounting kit	P3HKA00ML
Foot bracket mounting kit	P3HKA00MC

Note:

For solenoid operators and cable plugs (connectors) see pages 68 to 69.

Dimensions mm (inches)

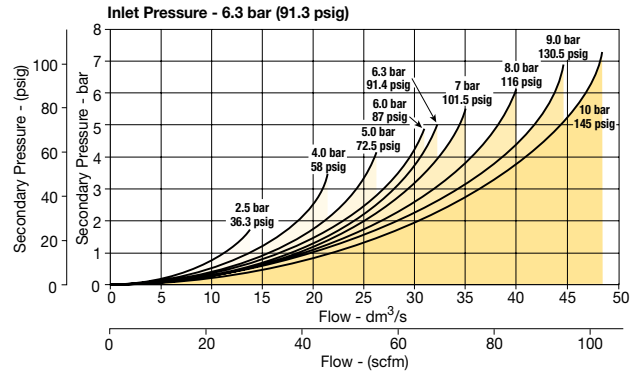
P31T



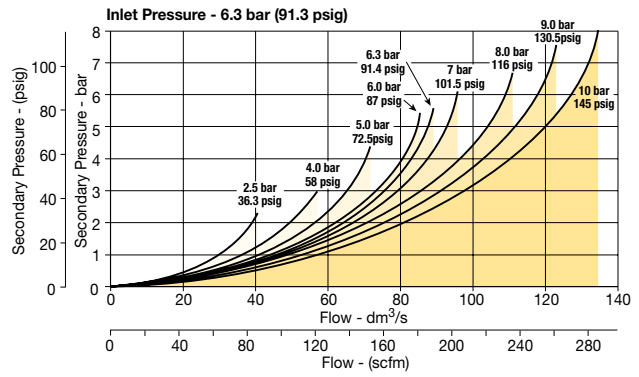
For mounting brackets see page 52

Flow Charts

1/4 Soft Start & Dump Valve



1/2 Soft Start & Dump Valve



P32T

