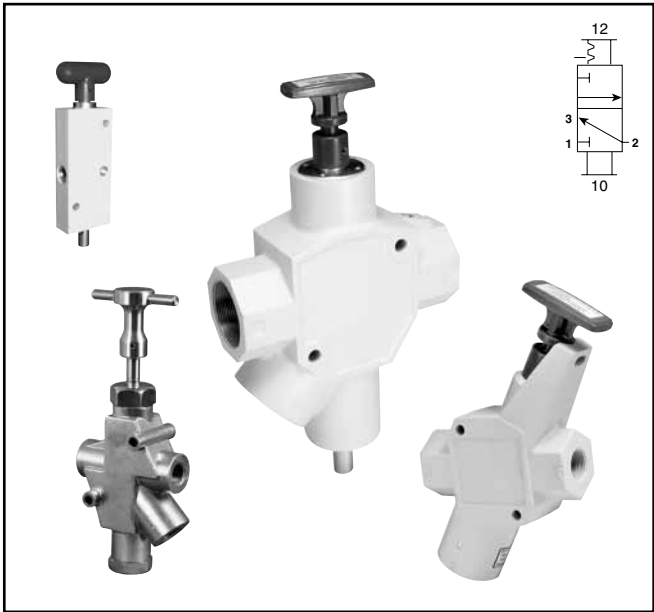


Features

Lockout valves are installed in pneumatic drop legs, or individual pneumatic control lines. In accordance with OSHA procedures, lockout valves are used during maintenance and service procedures of pneumatically (air) operated equipment.

- Used for compliance with OSHA 29 CFR part 1910
- 1/4" to 2" pipe sizes. NPT or BSPP
- Yellow cast aluminum body with red handle or stainless steel (NACE MR0175 / ISO 15156)
- Inline or surface mountable
- Built in port for pressure verification to meet ANSI B11 and PMMI B155 requirements



Material specifications

Description	LV	LVSS
Body:	Cast aluminum alloy	Stainless steel
Handle:	Plastic	Stainless steel
Spool:	Aluminum	Stainless steel
Seals:	Carboxylated nitrile	Carboxylated nitrile
Detent spring:	Stainless steel	Stainless steel
Grease:	Magnalube G [†]	Magnalube G [†]

[†] Trademark Magnalube

Operating information

Operating pressure:	LV	LVSS
Compact	15 to 145 PSIG	–
Standard	15 to 300 PSIG	15 to 300 PSIG
High flow	15 to 300 PSIG	–
Operating temperature:	40°F to 175°F	30°F to 175°F
Operating media:	Clean, dry, compressed air (5 micron)	

Applications

Lockout valves are installed in pneumatic drop legs, or individual pneumatic control lines (see Figure 1). In accordance with OSHA procedures, lockout valves are used during maintenance and service procedures of pneumatically (air) operated equipment. Prior to servicing, the red handle is pressed inward, blocking pressure and relieving all downstream air pressure. A padlock is installed through the locking hasp, Preventing accidental actuation during the maintenance procedure. Following maintenance, the padlock is removed and the red handle is pulled outward, returning air pressure to the system. (For complete Lockout / Tagout procedures, consult OSHA Standard 29 CFR Part 1910 in U.S. Federal Register/Vol. 54 No. 169, Friday, September 1, 1989 / Page 36644.)

Mounting

Valves can be inline mounted or surface mounted using the two mounting holes provided in the valve body. Mount valves in plain view with the handle oriented for accessibility.

Placement of Lockout Device

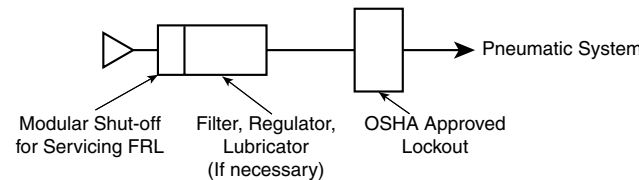




Figure 1.


Compact

	Port in / out	Port exhaust	Wt (lb)	Part number *
	1/4	3/8	0.9	LV2N3B
	3/8	3/8	0.9	LV3N3B


Standard

	Port in / out	Port exhaust	Wt (lb)	Part number *
	3/8	3/4	2.0	LV3N6B
	1/2	3/4	2.0	LV4N6B
	3/4	3/4	2.0	LV6N6B
	3/4	1-1/4	3.2	LV6NAB
	1	1-1/4	3.2	LV8NAB
	1-1/4	1-1/4	3.2	LVANAB

High Flow

	Port in / out	Port exhaust	Wt (lb)	Part number *
	1-1/2	2	8.2	LVBNCB
	2	2	8.2	LVCNCB

Stainless Steel

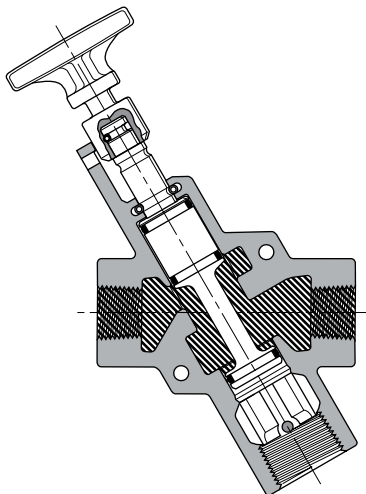
	Port in / out	Port exhaust	Wt (lb)	Part number *
	1/4	1/4	3.8	LV2N2BSS
	3/8	1/2	6.0	LV3N4BSS
	1/2	1/2	6.0	LV4N4BSS
	3/4	1	13	LV6N8BSS
	1	1	13	LV8N8BSS
	1-1/2	2	35	LVBNCBSS
	2	2	35	LVCNCBSS

* For BSPP ports, change 4th digit from "N" to "B"

Operation

Normal Machine Operation – Valve Open

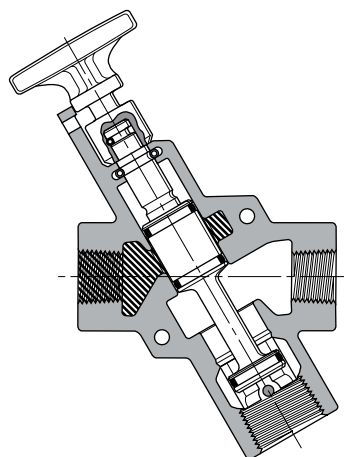
With the handle pulled outward. Inlet Port 1 is open to outlet Port 2. Exhaust Port 3 is blocked.



LV Series Shown Open

Lockout Operation – Valve Closed

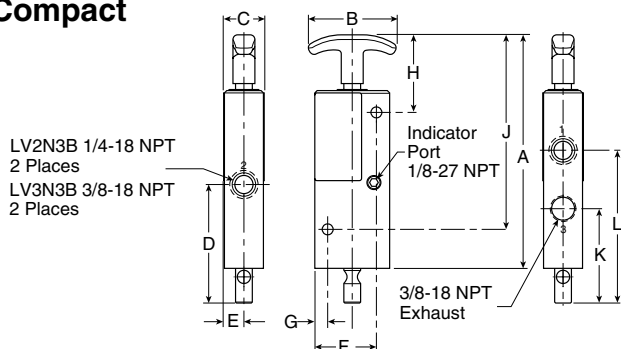
With the handle pushed inward. Inlet Port 1 is blocked. Outlet Port 2 is open to Exhaust Port 3.



LV Series Shown Closed

Dimensions

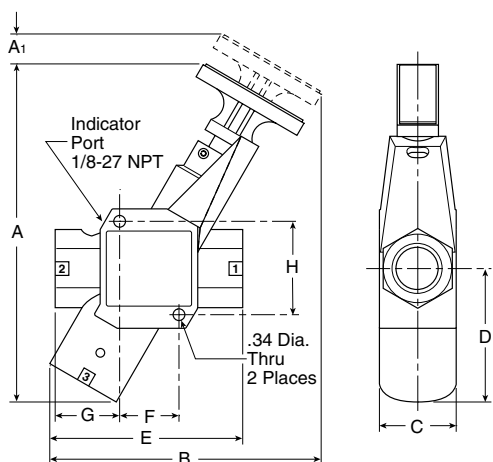
Compact



Compact LV Series, 3/8" Exhaust Ports Inches (mm)

A	B	C	D	E	F
6.50 (165)	2.25 (57)	1.05 (27)	3.04 (77)	.51 (13)	1.58 (40)
G	H	J	K	L	
.33 (8)	1.99 (51)	4.99 (127)	2.42 (62)	3.92 (100)	

Standard



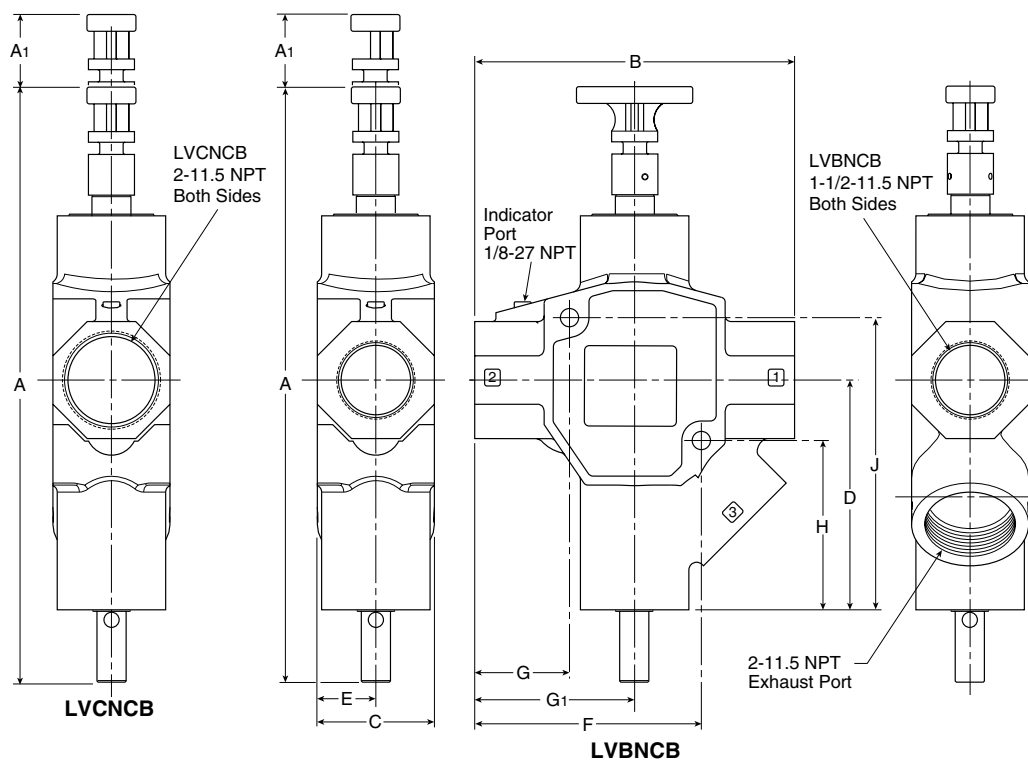
Standard LV Series, 3/4" Exhaust Port Inches (mm)

A	A1	B	C	D	E
8.32 (211)	0.64 (16)	6.60 (168)	2.00 (51)	3.06 (78)	4.24 (108)
F	G	H			
1.32 (111)	1.56 (40)	2.21 (56)			

Standard LV Series, 1-1/4" Exhaust Port Inches (mm)

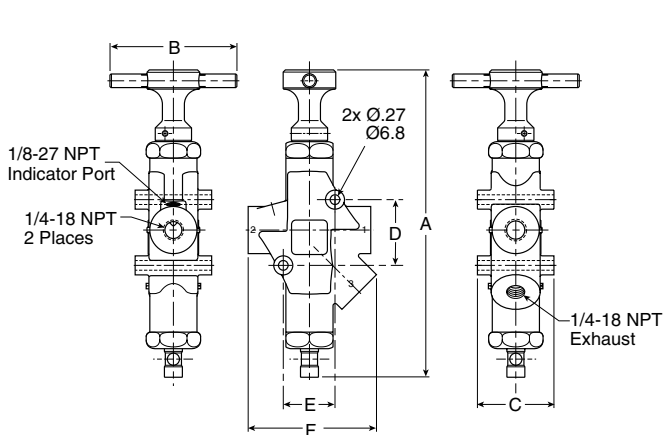
A	A1	B	C	D	E
9.91 (252)	0.85 (22)	7.95 (202)	2.25 (57)	3.91 (99)	5.65 (144)
F	G	H			
1.74 (44)	1.89 (48)	2.74 (70)			

High Flow

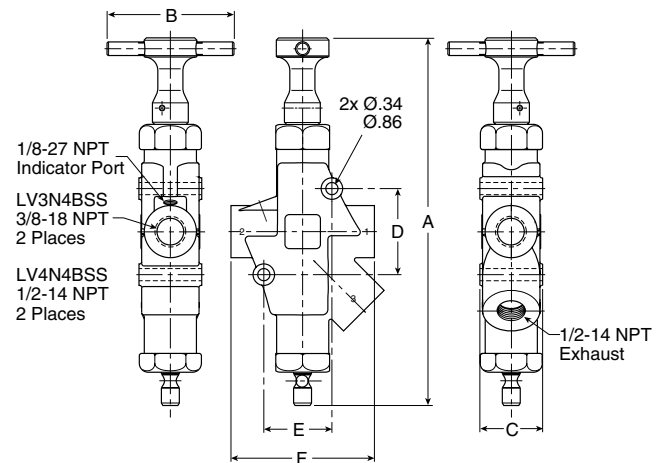


High Flow LV Series,
2" Exhaust Ports
Inches (mm)

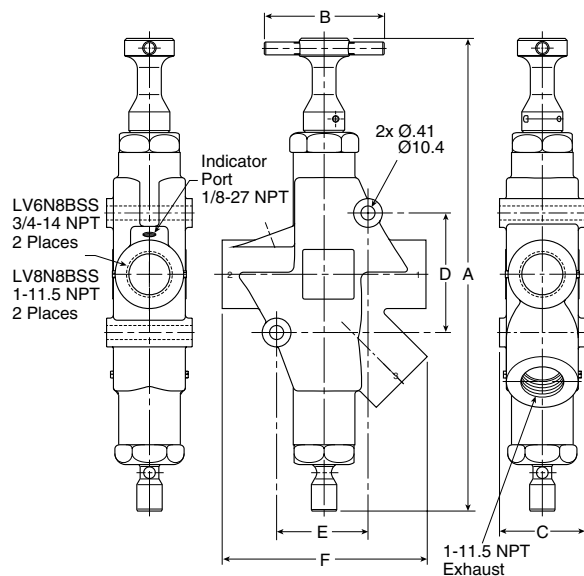
A	A1
14.82 (376)	1.87 (47)
B	C
8.20 (208)	3.00 (76)
D	E
5.89 (150)	1.50 (38)
F	G
5.81 (148)	2.43 (62)
G1	H
4.10 (104)	4.34 (110)
J	
7.49 (190)	

Dimensions**"LV" Series Valves
Stainless Steel****Stainless Steel****Stainless Steel LV Series, 1/4" Exhaust Port**
inches (mm)

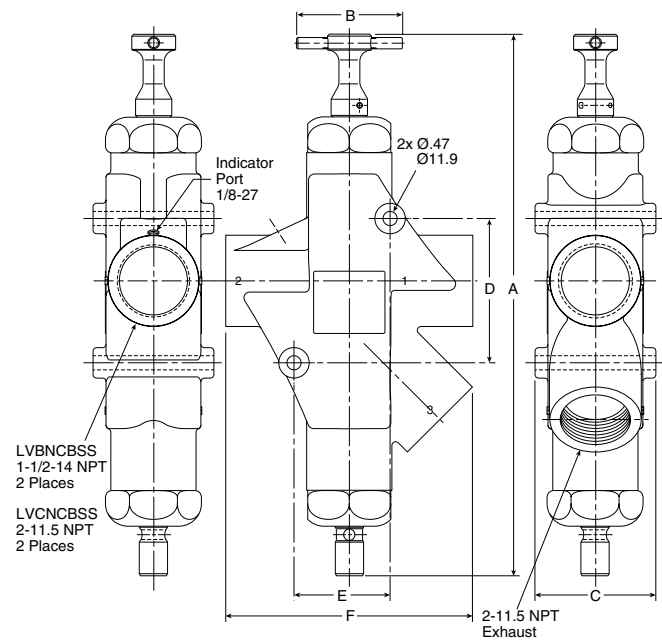
A	B	C	D	E	F
8.47 (215)	3.50 (89)	2.11 (54)	1.81 (46)	1.43 (36)	3.54 (90)

**Stainless Steel LV Series, 1/2" Exhaust Port**
inches (mm)

A	B	C	D	E	F
10.24 (260)	3.50 (89)	1.75 (45)	2.40 (61)	1.90 (48)	4.00 (102)

G**LV Series****EZ Series****Stainless Steel LV Series, 1" Exhaust Port**
inches (mm)

A	B	C	D	E	F
13.80 (351)	3.50 (89)	2.50 (64)	3.49 (89)	2.67 (68)	5.99 (152)

**Stainless Steel LV Series, 2" Exhaust Port**
inches (mm)

A	B	C	D	E	F
17.92 (455)	3.50 (89)	4.00 (102)	4.77 (121)	3.18 (81)	8.16 (207)

