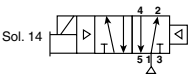
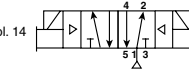
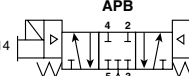




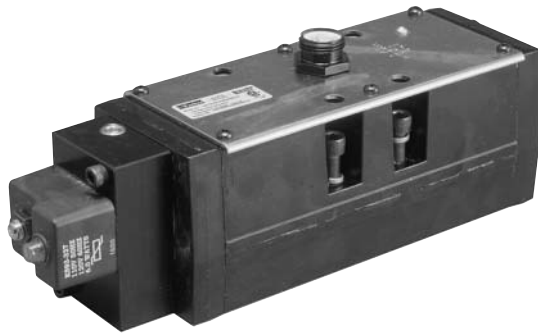
**"H4" 5599-2 Valve**

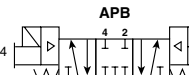


<b>Single Solenoid, 2-Position</b>		
	<b>H41VXBGA53A</b> <b>H41VXBGAB9A</b>	120VAC 24VDC
<b>Double Solenoid, 2-Position</b>		
	<b>H42VXBGA53A</b> <b>H42VXBGAB9A</b>	120VAC 24VDC
<b>Double Solenoid, 3-Position APB</b>		
	<b>H45VXBGA53A</b> <b>H45VXBGAB9A</b>	120VAC 24VDC

NLMOR, Lighted, Valve Less Base

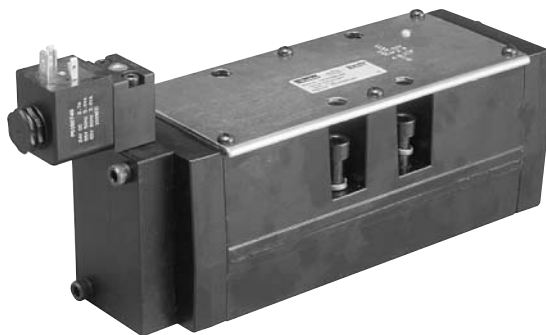
**"H4" 5599-1 AUTO Valve**

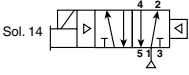
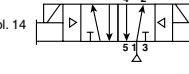
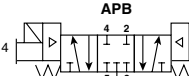


<b>Single Solenoid, 2-Position</b>		
	<b>H41WXBG383000*A</b> <b>H41WXBG2B9000*A</b>	120VAC 24VDC
<b>Double Solenoid, 2-Position</b>		
	<b>H42WXBG383000*A</b> <b>H42WXBG2B9000*A</b>	120VAC 24VDC
<b>Double Solenoid, 3-Position APB</b>		
	<b>H45WXBG383000*A</b> <b>H45WXBG2B9000*A</b>	120VAC 24VDC

NLMOR, Lighted, with Surge Suppression, Valve Less Base  
120VAC – 5-Pin Mini; 24VDC – 4-Pin M12 Micro  
\*Specify C, F, or G Wiring Code

**"H4" 5599-1 CNOMO Valve**

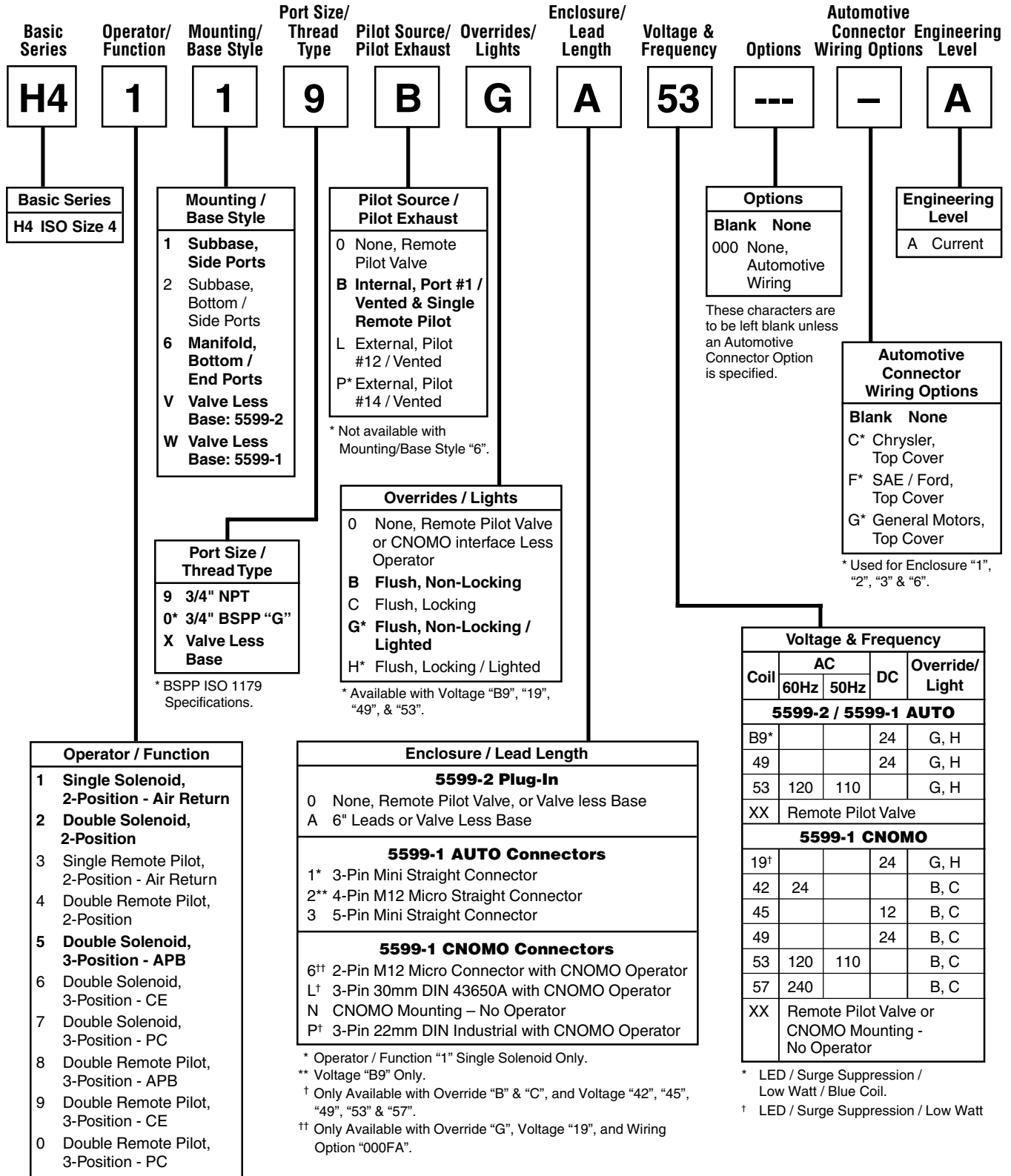


<b>Single Solenoid, 2-Position</b>		
	<b>H41WXBBL53A</b> <b>H41WXBBL49A</b>	120VAC 24VDC
<b>Double Solenoid, 2-Position</b>		
	<b>H42WXBBL53A</b> <b>H42WXBBL49A</b>	120VAC 24VDC
<b>Double Solenoid, 3-Position APB</b>		
	<b>H45WXBBL53A</b> <b>H45WXBBL49A</b>	120VAC 24VDC

NLMOR, Unlighted, 30mm 3-Pin DIN with CNOMO,  
Valve Less Base



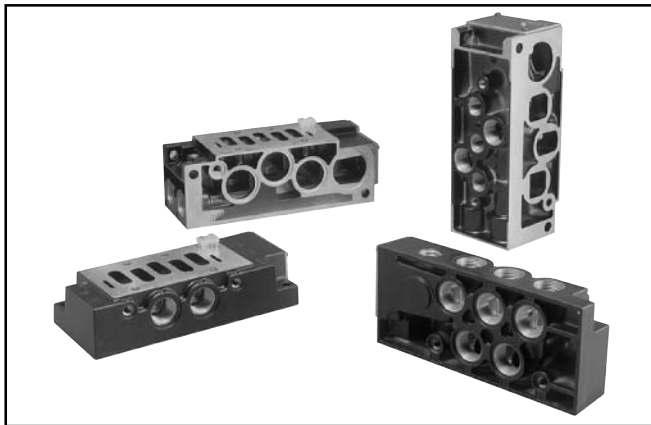
**BOLD OPTIONS ARE STANDARD**





## Manifold and Subbase Kit Ordering Code

Basic Series	Mounting / Base Style	Port Size / Thread Type	Enclosures / Lead Length	Factory Designator
<b>PS43</b>	<b>H4</b>	<b>9</b>	<b>A</b>	<b>P</b>
	<b>1</b> Subbase, Side Port <b>2</b> Subbase, Bottom / Side Port <b>6</b> Manifold, Bottom / End Port	<b>9</b> 3/4" NPT <b>0</b> 3/4" BSPP "G"	<b>0</b> None, No Electrical Plug <b>A</b> 6" Leads	



### End Plate

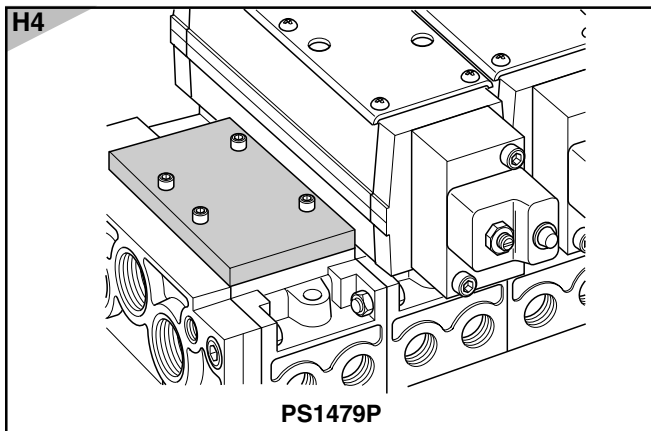
Size	Port Size	Kit Number	
		NPT	BSPP "G"
<b>H3</b>	1"	<b>PS1437P</b>	<b>PS1480P</b>



### Mounting / Base Style **H4**

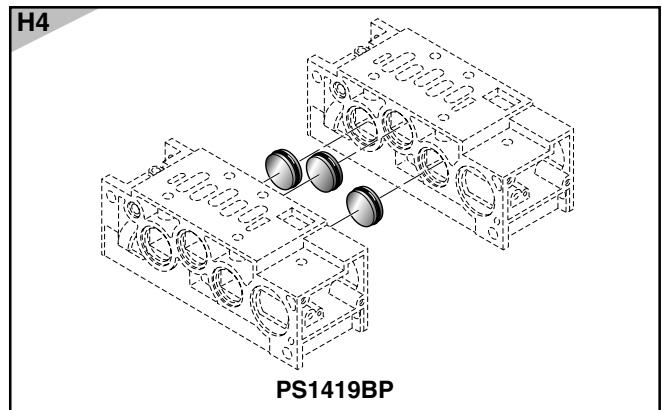
- 1** #1, #2, #3, #4, and #5 Side Ports Tapped 3/4"; #12 & #14 Side Pilot Ports Tapped 1/8"
- 2** #1, #2, #3, #4, and #5 Bottom Ports Tapped 3/4"; #1, #2, #3, #4, and #5 Side Ports Tapped 1/2"; #12 & #14 Bottom Pilot Ports Tapped 1/8"
- 6** #2 and #4 End Ports Tapped 3/4"; #2 and #4 Bottom Ports Tapped 3/4"; #1, #3 and #5 Bottom Ports Tapped 1/2"; #12 & #14 Bottom Pilot Ports Tapped 1/8"

### Blanking Plate



### Manifold Port Isolation

- Main Galley (1, 3, 5)





## Flow Rating (C<sub>v</sub>)

Size	Port Size	Mounting Style	2-Position	3-Position
H4	3/4"	Subbase	7.4	5.2
	3/4"	Manifold	7.4	5.2

## CSA / NRTL-C

### 5599-2 / 5599-1 AUTO

H4 – Standard 150 PSI

### 5599-1 CNOMO

H4 – Maximum Pressure 115 PSI

Insert an ‘L’ at the end of the valve part number.

## Temperature Rating

-15°C to 50°C (5°F to 120°F) ambient

## Operating Pressure

275 to 1035 kPa (40 to 150 PSI)

## Valve to Base Gaskets

### H4

1. Remove valve from base.
2. Remove existing gasket and replace with appropriate gasket shown to fit application.
3. When ordering an “H4” Valve, correct gasket is included with corresponding valve callouts.

#### Internal Pilot Port #1



P00148

#### Single Remote Air Pilot



P00150

#### External Pilot



P00149

#### Double Remote Air Pilot



P00151

**Note:** For single remote pilot valve with common external pilot, use P00151.

## Field Conversion of Pilot Supplies

**CAUTION:** Turn air and electrical supplies off before servicing unit.

H1 H2 H3 (Engineering Level ‘A’)

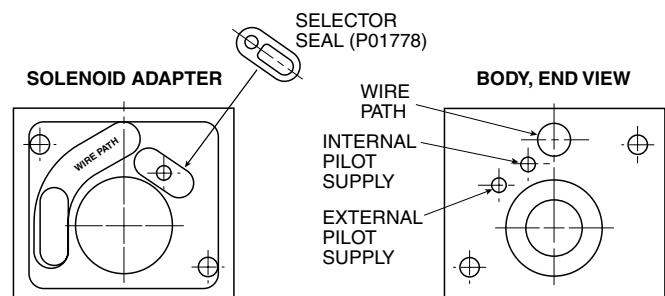
1. Remove solenoid coil so that you can access and remove the adapter block at the #14 end (and/or #12 end).
2. Remove air return end cap at the #12 end.

**Note:** Valve body has two pilot holes (internal & external). The internal pilot hole is the one located closest to the wire path hole.

3. Position the selector seal into its groove to connect the supply air (from the valve body) to either internal or external pilot supply. The figure shows the external pilot supply being selected.

**Note:** The same selection of seal positioning needs to be made at both the 12 & 14 ends.

4. Reassemble unit using the reverse order that it was taken apart.
5. External pilot supply can now be accessed from the 12 or 14 end of the base.



**Note:** “H3” selector seal recess is in the valve body.



## Spool and Body Service Kits (Engineering Level 'A')

Size	2-Position	3-Position			Kit Includes:
		APB	CE	PC	
H1	PS4001P	PS4002P	PS4003P	PS4004P	Spool with seals, piston seals, return spring and lubricant.
H2	PS4101P	PS4102P	PS4103P	PS4104P	
H3	K232024 * K343094 †	K232021	K323023	K232022	Spool Kit
	K352419 * K352420 †	K352420	K352420	K352420	Valve body o-rings, piston seals and lubricant.
H4	P00186	P00187	P00249	P00359	Spool Kit
	PS1401 * PS1402 †	PS1438	PS1438	PS1438	Valve body o-rings, piston seals and lubricant.

\* Used with Single Solenoid or Single Remote Pilot Valve. † Used with Double Solenoid or Double Remote Pilot Valve.

## Solenoid Information (Engineering Level 'A')

Voltage Range +10% / -15% of Nominal

### 5599-2 5599-1 AUTO

Voltage Code	Voltage			Coil Kit Number		Power Consumption (Watts)	AC		DC
	60Hz	50Hz	DC	With Indicator Light	Unlighted		Inrush (Amps)	Hold (Amps)	Hold (Amps)
B9*	—	—	24	K252 030*	—	3.1	—	—	0.105
42**	24	—	—	—	K252 031	6.0	.60	.41	—
43	—	24	—	—	K252 032	6.0	.57	.40	—
45**	—	—	12	—	K252 032	6.0	—	—	.47
49	—	—	24	K252 033	—	6.0	—	—	.23
51	—	—	48	—	K252 035	6.0	—	—	.14
53	120	110	—	K252 036	—	6.0	.12	.10	—
				K252 040†‡	—				
57**	240	—	—	—	K252 038	6.0	.07	.045	—
59**	—	240	—	—	K252 039	6.0	.07	.033	—
23 / 83** ‡	120	110	—	K252 040‡	—	6.0	.12	.10	—

\* Low watt with surge suppression (Blue).

\*\* Voltages available as kits only.

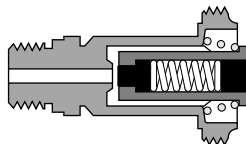
† Replacement coil when Automotive Option "C", "F", & "G" are specified in the valve model number.

‡ This coil contains an MOV as standard for surge suppression.

### 5599-2 5599-1 AUTO

#### Plunger & Guide Assembly (Engineering Level 'A')

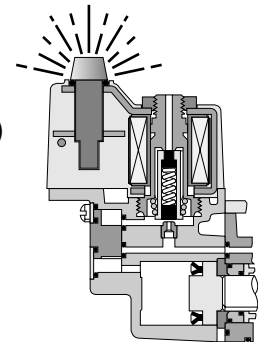
K232 025 Standard Voltages  
 K232 049 B9 Low Watt Voltage Code (Blue Coil)  
**Includes:** Plunger, Plunger Guide and Spring



### 5599-2 5599-1 AUTO

#### Replacement Indicator Light (Engineering Level 'A')

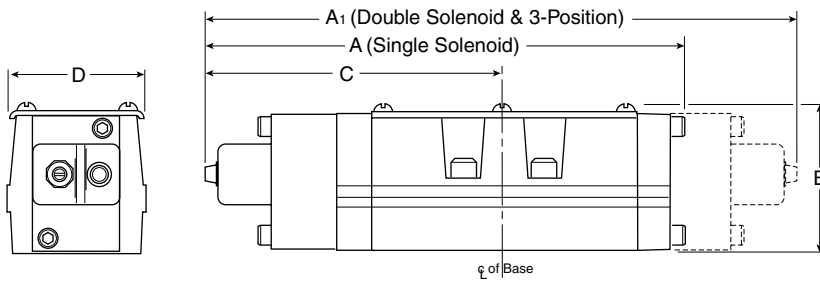
K252 008 24VDC  
 K252 009 120VAC  
**Includes:** Light and O-ring





**H4**

**5599-2**

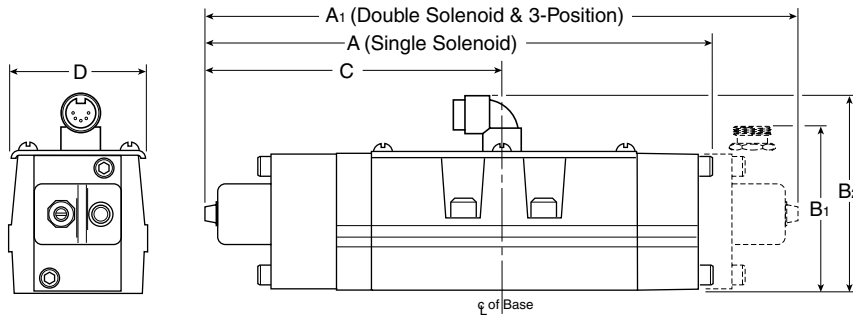


**Dimensions**

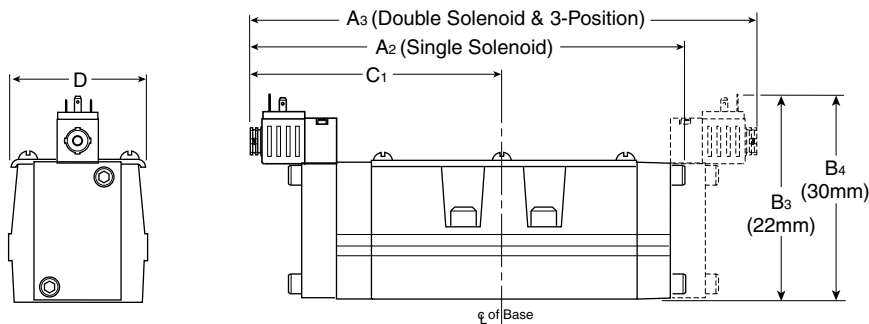
<b>A</b>	<b>A<sub>1</sub></b>	<b>A<sub>2</sub></b>	<b>A<sub>3</sub></b>	<b>A<sub>4</sub></b>
11.37 (289)	13.83 (351)	11.00 (279)	13.08 (332)	8.92 (267)
<b>A<sub>5</sub></b>	<b>B</b>	<b>B<sub>1</sub></b>	<b>B<sub>2</sub></b>	<b>B<sub>3</sub></b>
9.30 (236)	3.49 (89)	4.00 (102)	4.81 (122)	4.82 (122)
<b>B<sub>4</sub></b>	<b>C</b>	<b>C<sub>1</sub></b>	<b>C<sub>2</sub></b>	<b>D</b>
5.13 (130)	6.92 (176)	6.54 (166)	4.46 (113)	3.21 (82)

Inches (mm)

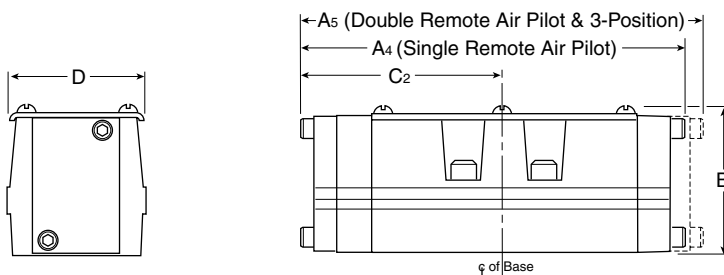
**5599-1 Auto**



**5599-1 DIN**



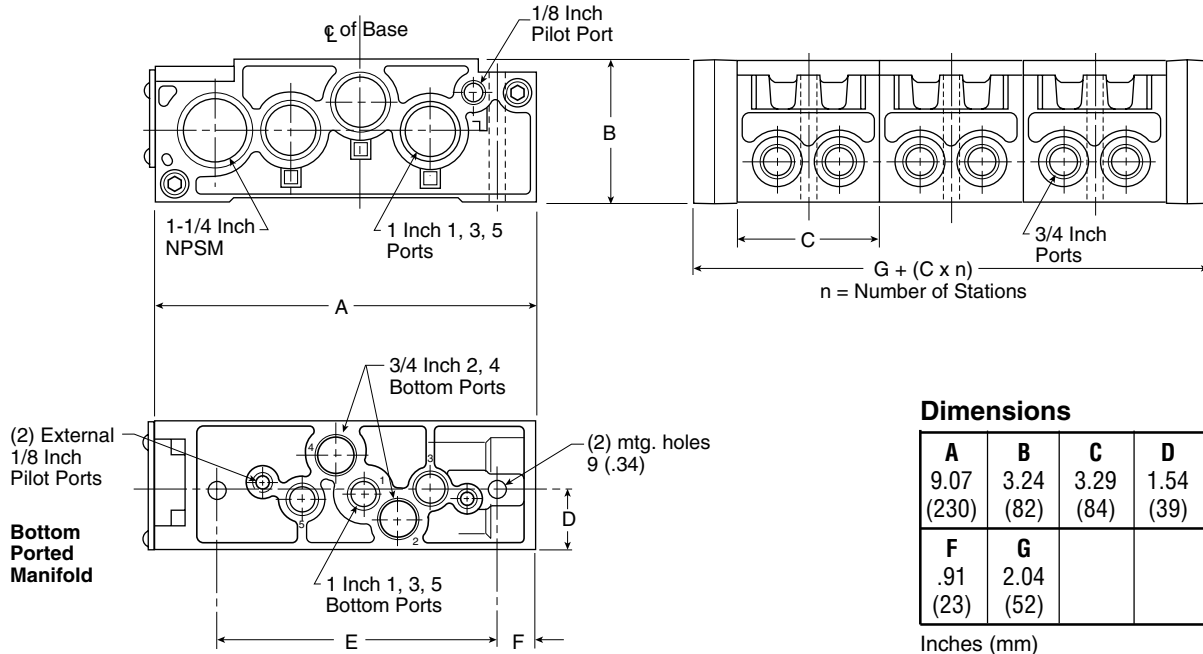
**5599-2 / 5599-1 Remote Pilot**





# H4

## H4 5599-2 / 5599-1 Manifold

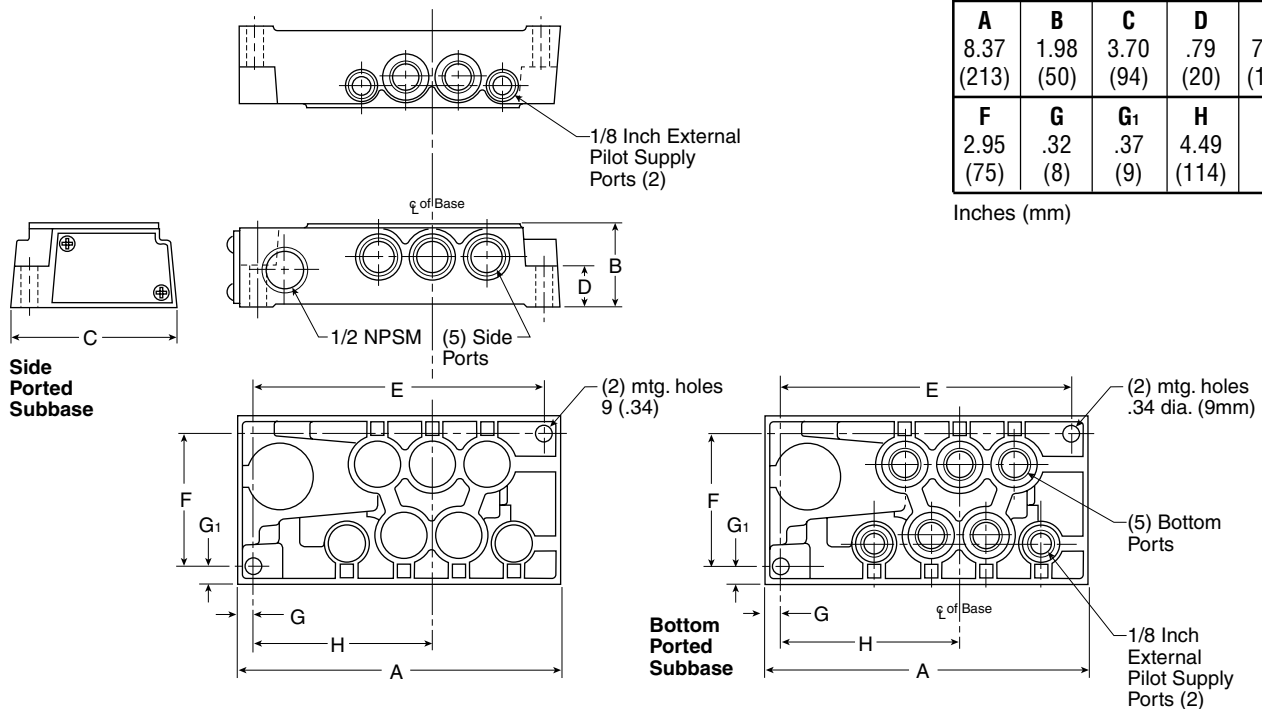


### Dimensions

A	B	C	D	E
9.07 (230)	3.24 (82)	3.29 (84)	1.54 (39)	6.89 (175)
F	G			
.91 (23)	2.04 (52)			

Inches (mm)

## H4 5599-2 / 5599-1 Subbase



### Dimensions

A	B	C	D	E
8.37 (213)	1.98 (50)	3.70 (94)	.79 (20)	7.69 (195)
F	G	G <sub>1</sub>	H	
2.95 (75)	.32 (8)	.37 (9)	4.49 (114)	

Inches (mm)