



# Directair 2 Series

Inline Valves

Manual / Mechanical

3 & 4-Way, 3 & 5-Port, 2-Position

## Section F

[www.parker.com/pneu/directair](http://www.parker.com/pneu/directair)



Directair 2 Series Basic Features..... F3

3-Way Poppet Valves..... F4

3-Way Spool Valves..... F5-F6

4-Way Spool Valves..... F7-F8

Model Number Index..... F9

Technical Information..... F10

Dimensions

    Poppet Valves..... F11-F12

    Spool Valves..... F13-F16

**BOLD ITEMS ARE MOST POPULAR.**

Brass  
Poppet

LV / EZ

MO

Viking  
Lever

42

Directair  
4

Directair  
2

**F**



|                 |         |    |                 |    |                |                |
|-----------------|---------|----|-----------------|----|----------------|----------------|
| Brass<br>Poppet | LV / EZ | M0 | Viking<br>Lever | 42 | Directair<br>4 | Directair<br>2 |
| <b>P</b>        |         |    |                 |    |                |                |

## Directair 2 Series

### Specifications

#### Inline Valve

- 1/8" Port
- 4-Way, 2-Position
- 3-Way, 2-Position

#### Manual Operators

- Lever
- Toggle
- Button

#### Mechanical Operators

- Plunger
- Roller
- One-Way Tripper

### Spool Style

#### Packed Bore Style – .20 Cv

- Stainless Steel Spool
- Fluorocarbon O-Rings
- 3-Way & 4-Way

#### Poppet Style – .17 Cv

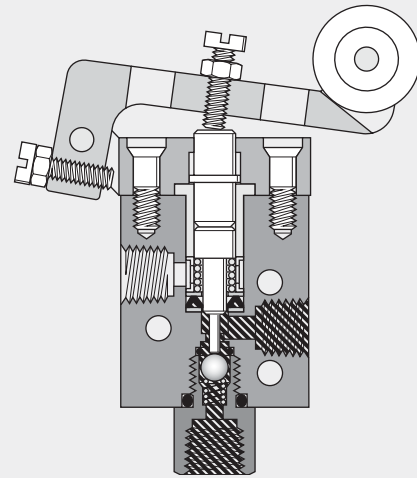
- Economical
- 3-Way Normally Closed Function

### Operating Pressure

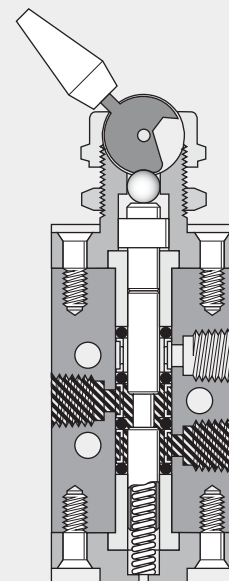
- Vacuum to 150 PSI (28" Hg to 1035 kPa) for spool style
- 0 to 150 PSI (0 to 1035 kPa) for poppet style

### Operating Temperature



- 32°F to 175°F (0°C to 80°C)



Roller Operated



Toggle Operated

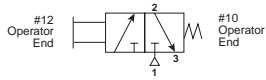
 Pressure  Exhaust

|              |
|--------------|
| Brass Poppet |
| LV / EZ      |
| M0           |
| Viking Lever |
| 42           |
| Directair 4  |
| Directair 2  |

**F**

## Plunger Operated

**404111000** Plunger Operated, Spring Return



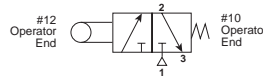
### Spring Return

*Normal Position* – Pressure at Inlet Port 1 is blocked. Outlet Port 2 is connected to Exhaust Port 3.

*Actuated Position* – Pressure at Inlet Port 1 is connected to Outlet Port 2. Exhaust Port 3 is blocked.

## Roller Operated

**404211000** Roller Operated, Spring Return



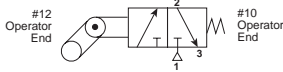
### Spring Return

*Normal Position* – Pressure at Inlet Port 1 is blocked. Outlet Port 2 is connected to Exhaust Port 3.

*Actuated Position* – Pressure at Inlet Port 1 is connected to Outlet Port 2. Exhaust Port 3 is blocked.

## Tripper Operated

**404311000** One-Way Tripper Operated, Spring Return



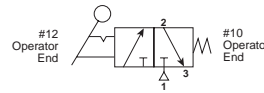
### Spring Return

*Normal Position* – Pressure at Inlet Port 1 is blocked. Outlet Port 2 is connected to Exhaust Port 3.

*Actuated Position* – Pressure at Inlet Port 1 is connected to Outlet Port 2. Exhaust Port 3 is blocked.

## Toggle Operated

**404811000** Detented Toggle, Spring Return



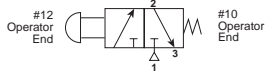
### Spring Return

*Normal Position* – Pressure at Inlet Port 1 is blocked. Outlet Port 2 is connected to Exhaust Port 3.

*Actuated (Detented) Position* – Pressure at Inlet Port 1 is connected to Outlet Port 2. Exhaust Port 3 is blocked.

## Button Operated

**404411000** Button Operated, Spring Return



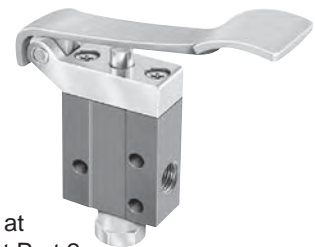
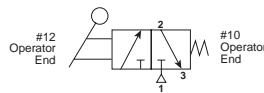
### Spring Return

*Normal Position* – Pressure at Inlet Port 1 is blocked. Outlet Port 2 is connected to Exhaust Port 3.

*Actuated Position* – Pressure at Inlet Port 1 is connected to Outlet Port 2. Exhaust Port 3 is blocked.

## Hand Lever Operated

**404711000** Hand Lever Operated, Spring Return



### Spring Return

*Normal Position* – Pressure at Inlet Port 1 is blocked. Outlet Port 2 is connected to Exhaust Port 3.

*Actuated Position* – Pressure at Inlet Port 1 is connected to Outlet Port 2. Exhaust Port 3 is blocked.

Brass  
Poppet

LV / EZ

MO

Viking  
Lever

42

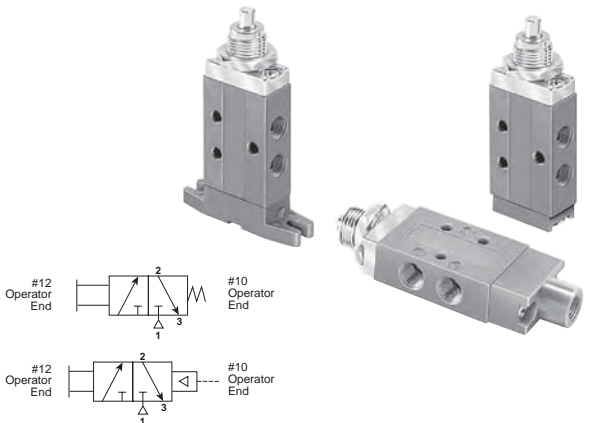
Directair  
4

Directair  
2

F

## Plunger Operated

- 414111000** Plunger Operated, Spring Return
- 414121000** Plunger Operated, Spring Return, Foot Mounted
- 414151000** Plunger Operated, Pilot Return



#12 Operator End #10 Operator End

#12 Operator End #10 Operator End

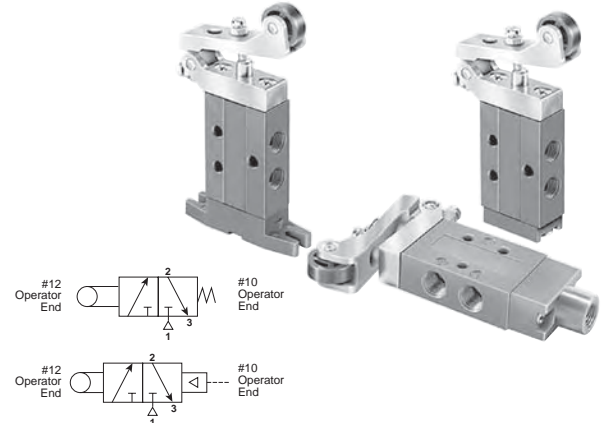
### Spring Return

*Normal Position* – Pressure at Inlet Port 1 is blocked. Outlet Port 2 is connected to Exhaust Port 3.

*Actuated Position* – Pressure at Inlet Port 1 is connected to Outlet Port 2 Exhaust Port 3 is blocked.

## Roller Operated

- 414211000** Roller Operated, Spring Return
- 414221000** Roller Operated, Spring Return, Foot Mounted
- 414251000** Roller Operated, Pilot Return



#12 Operator End #10 Operator End

#12 Operator End #10 Operator End

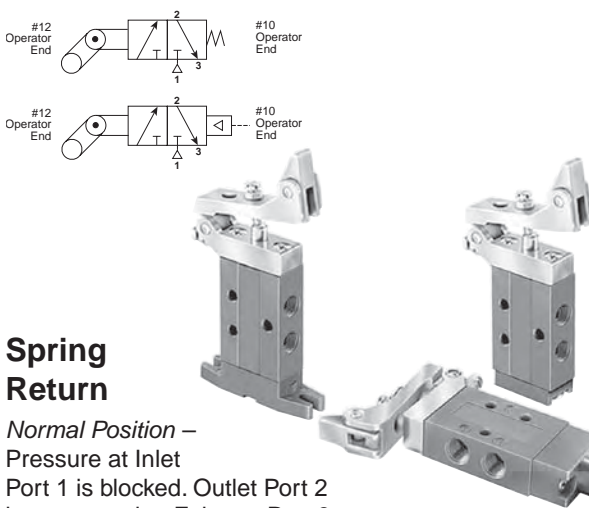
### Spring Return

*Normal Position* – Pressure at Inlet Port 1 is blocked. Outlet Port 2 is connected to Exhaust Port 3.

*Actuated Position* – Pressure at Inlet Port 1 is connected to Outlet Port 2. Exhaust Port 3 is blocked.

## One-Way Tripper Operated

- 414311000** One-Way Tripper, Spring Return
- 414321000** One-Way Tripper, Spring Return, Foot Mounted
- 414351000** One-Way Tripper, Pilot Return



#12 Operator End #10 Operator End

#12 Operator End #10 Operator End

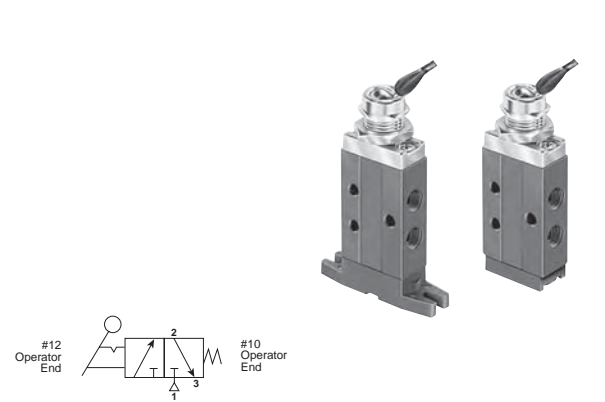
### Spring Return

*Normal Position* – Pressure at Inlet Port 1 is blocked. Outlet Port 2 is connected to Exhaust Port 3.

*Actuated Position* – Pressure at Inlet Port 1 is connected to Outlet Port 2. Exhaust Port 3 is blocked.

## Toggle Operated

- 414811000** Detented Toggle, Spring Return
- 414821000** Detented Toggle, Spring Return, Foot Mounted



#12 Operator End #10 Operator End

### Spring Return

*Normal Position* – Pressure at Inlet Port 1 is blocked. Outlet Port 2 is connected to Exhaust Port 3.

*Actuated (Detented) Position* – Pressure at Inlet Port 1 is connected to Outlet Port 2. Exhaust Port 3 is blocked.

|              |
|--------------|
| Brass Poppet |
| LV / EZ      |
| M0           |
| Viking Lever |
| 42           |
| Directair 4  |
| Directair 2  |

**F**

### Button Operated

- 414411000** Button Operated, Spring Return
- 414421000** Button Operated, Spring Return, Foot Mounted
- 414451000** Button Operated, Pilot Return

### Button Operated

- 414931000** Button Operated, Manual Return
- 414941000** Button Operated, Manual Return, Foot Mounted
- 414951000** Button Operated, Manual Return or Pilot Return

**Spring Return**

*Normal Position* – Pressure at Inlet Port 1 is blocked. Outlet Port 2 is connected to Exhaust Port 3.

*Actuated Position* – Pressure at Inlet Port 1 is connected to Outlet Port 2. Exhaust Port 3 is blocked.

**Manual Return**

*Operator pulled last* – Pressure at Inlet Port 1 is blocked. Outlet Port 2 is connected to Exhaust Port 3.

*Operator pushed last* – Pressure at Inlet Port 1 is connected to Outlet Port 2. Exhaust Port 3 is blocked.

### Hand Lever Operated

- 414711000** Hand Lever Operated, Spring Return
- 414721000** Hand Lever Operated, Spring Return, Foot Mounted
- 414751000** Hand Lever Operated, Pilot Return

**Spring Return**

*Normal Position* – Pressure at Inlet Port 1 is blocked. Outlet Port 2 is connected to Exhaust Port 3.

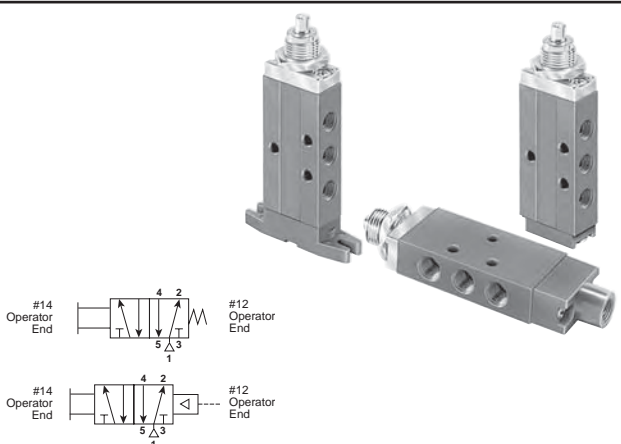
*Actuated Position* – Pressure at Inlet Port 1 is connected to Outlet Port 2. Exhaust Port 3 is blocked.

Brass  
 Poppet  
 LV / EZ  
 M0  
 Viking  
 Lever  
 42  
 Directair  
 4  
 Directair  
 2



### Plunger Operated

- 410111000** Plunger Operated, Spring Return
- 410121000** Plunger Operated, Spring Return, Foot Mounted
- 410151000** Plunger Operated, Pilot Return



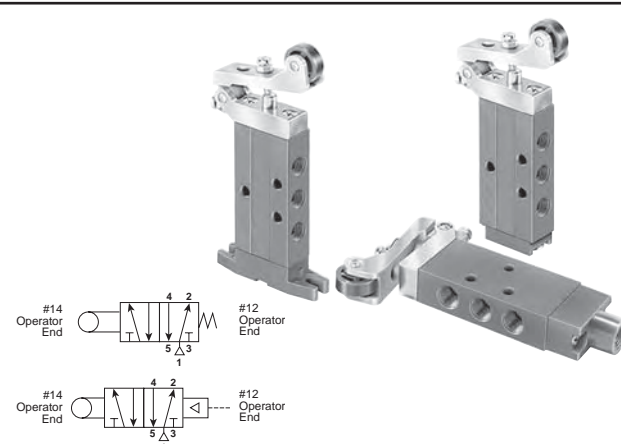
**Spring Return**

*Normal Position* – Pressure at Inlet Port 1 is connected to Outlet Port 2. Outlet Port 4 is connected to Exhaust Port 5.

*Actuated Position* – Pressure at Inlet Port 1 is connected to Outlet Port 4. Outlet Port 2 is connected to Exhaust Port 3.

### Roller Operated

- 410211000** Roller Operated, Spring Return
- 410221000** Roller Operated, Spring Return, Foot Mounted
- 410251000** Roller Operated, Pilot Return



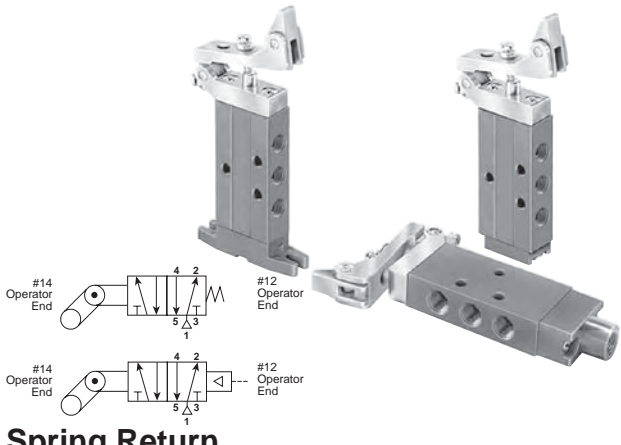
**Spring Return**

*Normal Position* – Pressure at Inlet Port 1 is connected to Outlet Port 2. Outlet Port 4 is connected to Exhaust Port 5.

*Actuated Position* – Pressure at Inlet Port 1 is connected to Outlet Port 4. Outlet Port 2 is connected to Exhaust Port 3.

### One-Way Tripper Operated

- 410311000** One-Way Tripper, Spring Return
- 410321000** One-Way Tripper, Spring Return, Foot Mounted
- 410351000** One-Way Tripper, Pilot Return



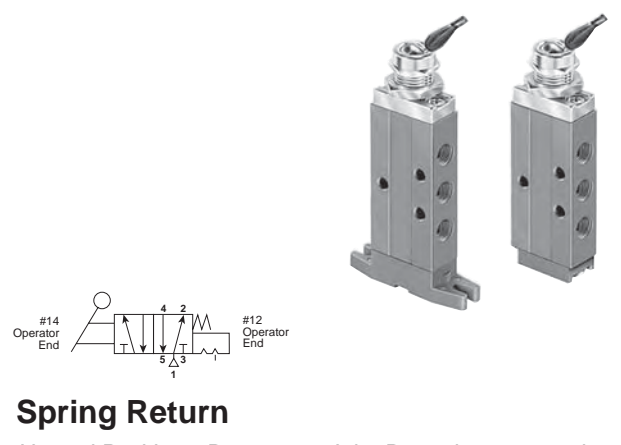
**Spring Return**

*Normal Position* – Pressure at Inlet Port 1 is connected to Outlet Port 2. Outlet Port 4 is connected to Exhaust Port 5.

*Actuated Position* – Pressure at Inlet Port 1 is connected to Outlet Port 4. Outlet Port 2 is connected to Exhaust Port 3.

### Toggle Operated

- 410811000** Detented Toggle, Spring Return
- 410821000** Detented Toggle, Spring Return, Foot Mounted



**Spring Return**

*Normal Position* – Pressure at Inlet Port 1 is connected to Outlet Port 2. Outlet Port 4 is connected to Exhaust Port 5.

*Actuated (Detented) Position* – Pressure at Inlet Port 1 is connected to Outlet Port 4. Outlet Port 2 is connected to Exhaust Port 3.

|              |
|--------------|
| Brass Poppet |
| LV / EZ      |
| MO           |
| Viking Lever |
| 42           |
| Directair 4  |
| Directair 2  |

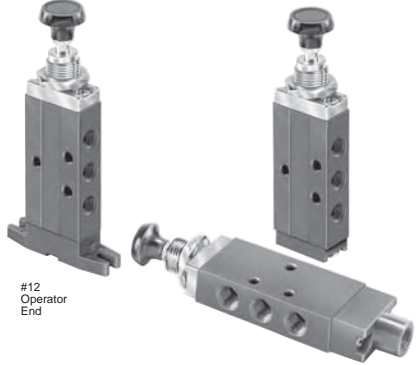
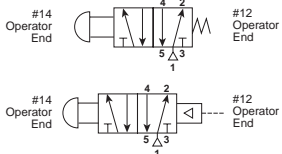
**F**

### Button Operated

- 410411000** Button Operated, Spring Return
- 410421000** Button Operated, Spring Return, Foot Mounted
- 410451000** Button Operated, Pilot Return

### Button Operated

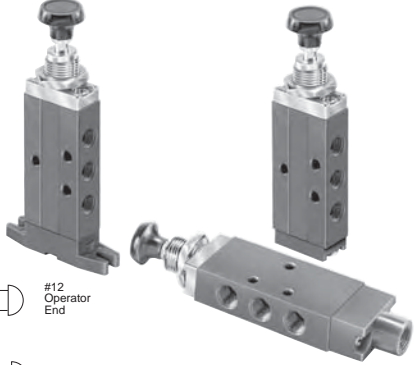
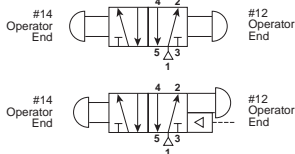
- 410931000** Button Operated, Manual Return
- 410941000** Button Operated, Manual Return, Foot Mounted
- 410951000** Button Operated, Manual Return or Pilot Return

**Spring Return**

*Normal Position* – Pressure at Inlet Port 1 is connected to Outlet Port 2. Outlet Port 4 is connected to Exhaust Port 5.

*Actuated Position* – Pressure at Inlet Port 1 is connected to Outlet Port 4. Outlet Port 2 is connected to Exhaust Port 3.

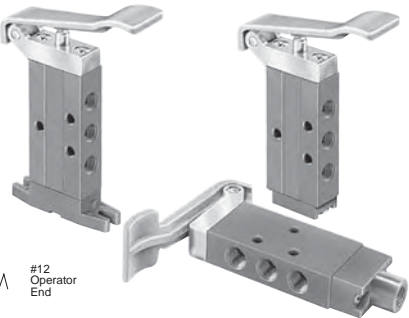
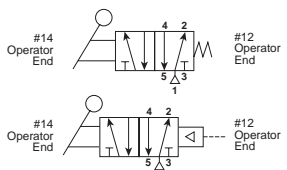
**Manual Return**

*Operator pulled last* – Pressure at Inlet Port 1 is connected to Outlet Port 2. Outlet Port 4 is connected to Exhaust Port 5.

*Operator pushed last* – Pressure at Inlet Port 1 is connected to Outlet Port 4. Outlet Port 2 is connected to Exhaust Port 3.

### Hand Lever Operated

- 410711000** Hand Lever Operated, Spring Return
- 410721000** Hand Lever Operated, Spring Return, Foot Mounted
- 410751000** Hand Lever Operated, Pilot Return

**Spring Return**

*Normal Position* – Pressure at Inlet Port 1 is connected to Outlet Port 2. Outlet Port 4 is connected to Exhaust Port 5.

*Actuated Position* – Pressure at Inlet Port 1 is connected to Outlet Port 4. Outlet Port 2 is connected to Exhaust Port 3.

Brass Poppet  
 LV / EZ  
 M0  
 Viking Lever  
 42  
 Directair 4  
 Directair 2



**Directair 2 Series**

**BOLD OPTIONS ARE MOST POPULAR.**

**41 0 1 1 1 000**

| Basic Series           |     |
|------------------------|-----|
| 1/8" Port Poppet Valve | 40* |
| 1/8" Port Spool Valve  | 41  |

\* Only available in Spring Return.

| Type                    |    |
|-------------------------|----|
| 4-Way, 2-Position Valve | 0* |
| 3-Way, 2-Position       | 4  |

\* N/A with Basic Series 40.

| Actuation              |    |
|------------------------|----|
| Plunger                | 1  |
| Roller - Delrin        | 2  |
| One-Way Tripper        | 3  |
| Button - Spring Return | 4  |
| Hand Lever             | 7  |
| Toggle                 | 8  |
| Button - Push-Pull     | 9* |

\* N/A with Basic Series 40.

| Manual / Mechanical |          |
|---------------------|----------|
| 000                 | Standard |

| Mounting |                          |
|----------|--------------------------|
| 1        | Direct Pipe Ported, NPT  |
| K        | Direct Pipe Ported, BSPP |

| Return |                                    |
|--------|------------------------------------|
| 1†     | Spring                             |
| 2†     | Spring w/ Foot Mount               |
| 3†     | None (Manual Return)               |
| 4†     | None (Manual Return w/ Foot Mount) |
| 5†     | Remote Pilot Return                |

\* Available only with Actuation 9.

† N/A with Actuation 8.

Brass Poppet

LV / EZ

M0

Viking Lever

42

Directair 4

Directair 2

**F**

## Operating Pressure

150 PSI (28" Hg to 1035 kPa)\*

\* Poppet valves cannot be used for vacuum.  
 Minimum operating pressure = 0 PSIG.

## Temperature Range

32°F to 175°F (0°C to 80°C)

**⚠ CAUTION:**  
 If it is possible that the ambient temperature may fall below freezing, the medium must be moisture free to prevent internal damage or unpredictable behavior.

## Materials

Body and Operator Housings.....Aluminum Extrusion  
 Spool ..... Stainless Steel  
 Bushings.....Brass  
 Spacers ..... Zinc Die Cast  
 Dynamic O-Rings.....Fluorocarbon  
 Operator O-Rings.....Buna (Nitrile)  
 Operator U-Cups.....Buna (Nitrile)  
 Poppet Ball.....Nylon

## Lubrication

For maximum service life use clean, lubricated air.  
 Valves are shipped pre-lubricated and can be operated without additional lubrication with reduced service life.

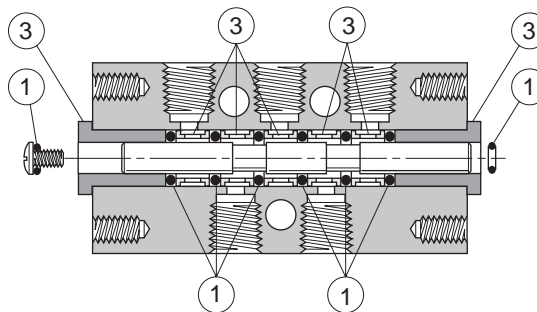
## Suggested Lubricant

F442 Oil

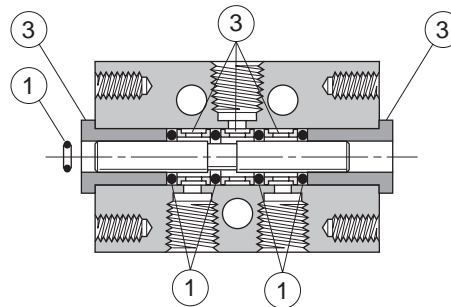
## Flow Rating (Cv)

| Flow Path | Direct Pipe Spool,<br>1/8" Ports | Direct Pipe Poppet,<br>1/8" Ports |
|-----------|----------------------------------|-----------------------------------|
| 1 → 2     | .199                             | .125                              |
| 1 → 4     | .191                             | —                                 |
| 2 → 3     | .192                             | .215                              |
| 4 → 5     | .212                             | —                                 |
| Avg.      | .199                             | N/A                               |

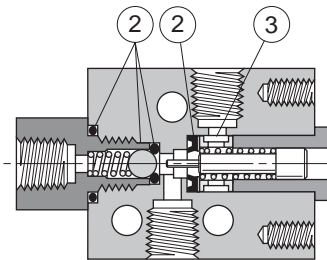
## Service Kits



**4-Way Spool**



**3-Way Spool**



**3-Way Poppet**

- ① Spool Valve Seal Kit  
 (3 & 4-Way, Direct Pipe Ported) ..... **41000 8000**
- ② Poppet Valve Seal Kit ..... **40411 8000**
- ③ Body Service Kit..... **41000 8005**

Brass  
Poppet

LV / EZ

M0

Viking  
Lever

42

Directair  
4

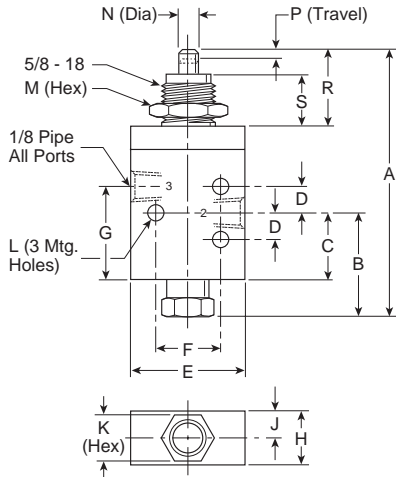
Directair  
2

LT

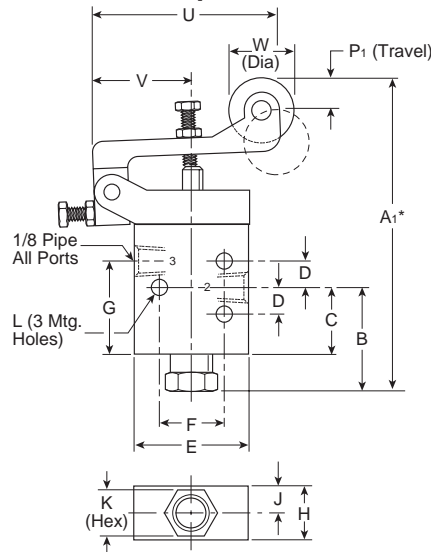
## Plunger, Roller, One-Way Tripper & Toggle Operated

3-Way, 3-Port, 2-Position – 1/8" Ports

### Plunger Operated



### Roller Operated



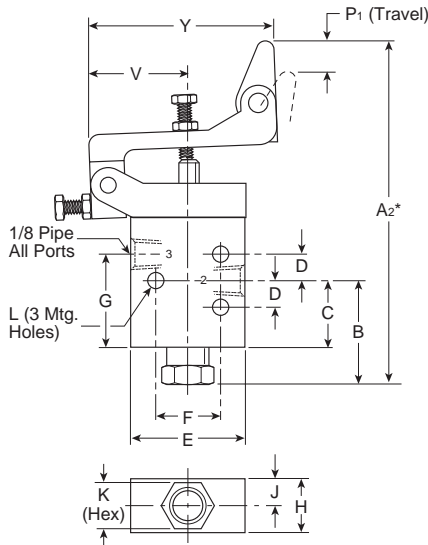
### 3-Way, 3-Port, 2-Position

|                          |                             |                             |                            |                           |
|--------------------------|-----------------------------|-----------------------------|----------------------------|---------------------------|
| <b>A</b><br>3.37<br>(86) | <b>A1*</b><br>4.21<br>(107) | <b>A2*</b><br>4.46<br>(113) | <b>A3</b><br>3.99<br>(101) | <b>B</b><br>1.03<br>(26)  |
| <b>C</b><br>.55<br>(14)  | <b>D</b><br>.31<br>(8)      | <b>E</b><br>1.31<br>(33)    | <b>F</b><br>.75<br>(19)    | <b>G</b><br>.90<br>(23)   |
| <b>H</b><br>.62<br>(16)  | <b>J</b><br>.31<br>(8)      | <b>K</b><br>.56<br>(14)     | <b>L</b><br>.19<br>(5)     | <b>M</b><br>.88<br>(22)   |
| <b>N</b><br>.25<br>(6)   | <b>P</b><br>.17<br>(4)      | <b>P1</b><br>.38<br>(10)    | <b>R</b><br>.91<br>(23)    | <b>R1</b><br>1.53<br>(39) |
| <b>S</b><br>.62<br>(16)  | <b>S1</b><br>.78<br>(20)    | <b>U</b><br>2.28<br>(58)    | <b>V</b><br>1.19<br>(30)   | <b>W</b><br>.75<br>(19)   |
| <b>X</b><br>.19<br>(5)   | <b>Y</b><br>2.19<br>(56)    |                             |                            |                           |

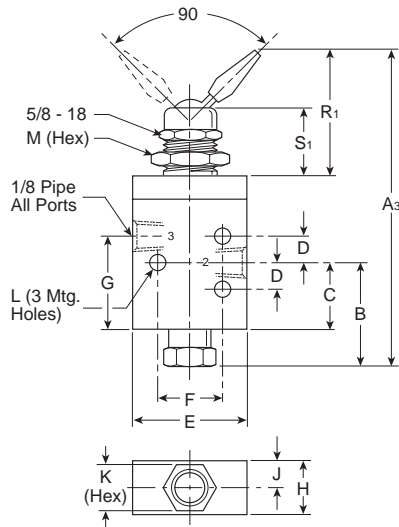
\* Dimensions may be reduced .44" using adjusting screw.

Inches (mm)

### One-Way Tripper Operated



### Toggle Operated



Brass  
Poppet

LV / EZ

M0

Viking  
Lever

42

Directair  
4

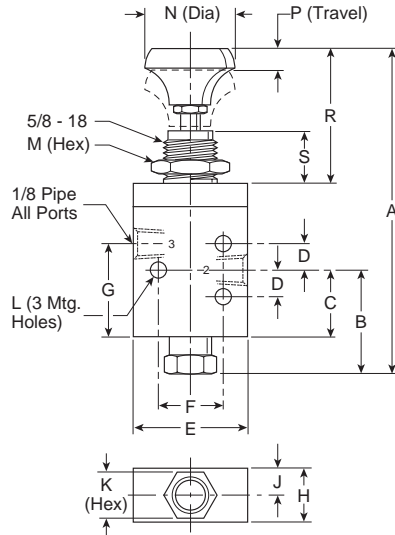
Directair  
2

F

## Button & Hand Lever Operated

3-Way, 3-Port, 2-Position – 1/8" Ports

### Button Operated

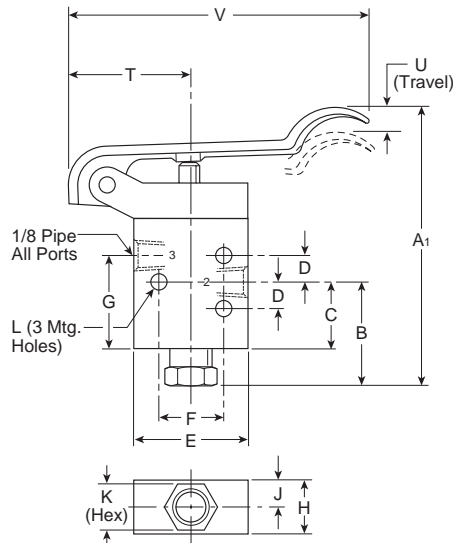


### 3-Way, 3-Port, 2-Position

|                           |                                      |                          |                          |                          |
|---------------------------|--------------------------------------|--------------------------|--------------------------|--------------------------|
| <b>A</b><br>4.13<br>(105) | <b>A<sub>1</sub></b><br>3.34<br>(85) | <b>B</b><br>1.03<br>(26) | <b>C</b><br>.55<br>(14)  | <b>D</b><br>.31<br>(8)   |
| <b>E</b><br>1.31<br>(33)  | <b>F</b><br>.75<br>(19)              | <b>G</b><br>.90<br>(23)  | <b>H</b><br>.62<br>(16)  | <b>J</b><br>.31<br>(8)   |
| <b>K</b><br>.56<br>(14)   | <b>L</b><br>.19<br>(5)               | <b>M</b><br>.88<br>(22)  | <b>N</b><br>1.06<br>(27) | <b>P</b><br>.17<br>(4)   |
| <b>R</b><br>1.67<br>(42)  | <b>S</b><br>.63<br>(16)              | <b>T</b><br>1.19<br>(30) | <b>U</b><br>.53<br>(13)  | <b>V</b><br>3.38<br>(86) |

Inches (mm)

### Hand Lever Operated



Brass  
Poppet

LV / EZ

M0

Viking  
Lever

42

Directair  
4

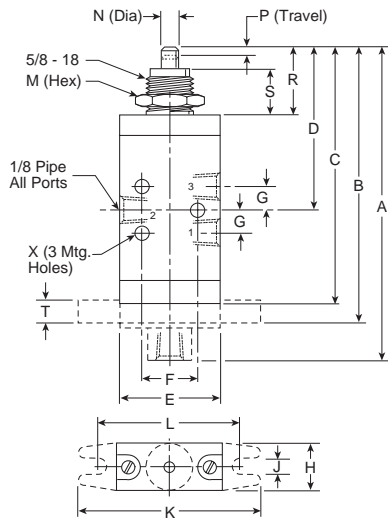
Directair  
2

**P**

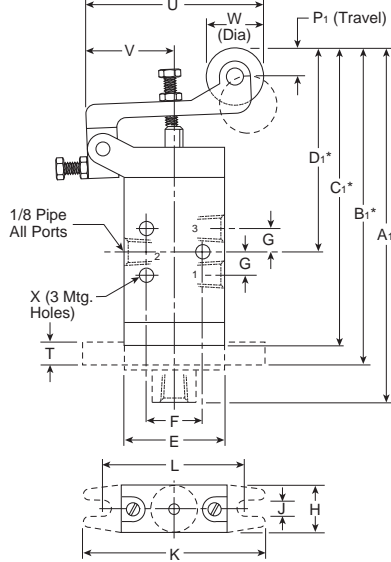
## Plunger, Roller, One-Way Tripper & Toggle Operated

3-Way, 3-Port, 2-Position – 1/8" Ports

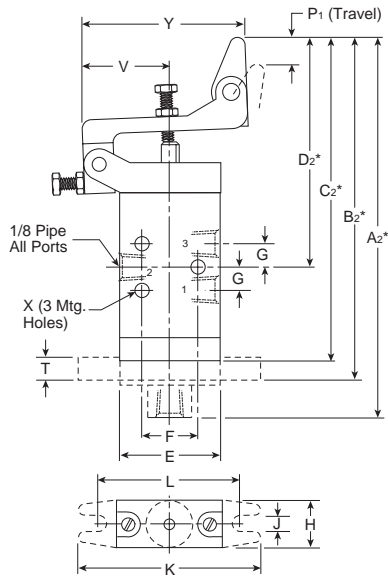
**Plunger Operated**



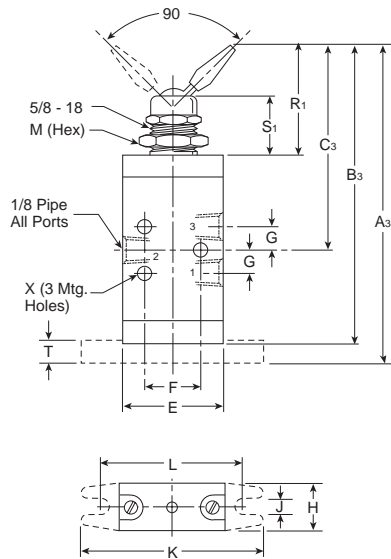
**Roller Operated**



**One-Way Tripper Operated**



**Toggle Operated**



**3-Way, 3-Port, 2-Position**

|                            |                             |                             |                            |                            |
|----------------------------|-----------------------------|-----------------------------|----------------------------|----------------------------|
| <b>A</b><br>4.14<br>(105)  | <b>A1*</b><br>4.98<br>(126) | <b>A2*</b><br>5.23<br>(133) | <b>A3</b><br>4.23<br>(107) | <b>B</b><br>3.61<br>(92)   |
| <b>B1</b><br>4.45<br>(113) | <b>B2</b><br>4.70<br>(119)  | <b>B3</b><br>4.00<br>(102)  | <b>C</b><br>3.38<br>(86)   | <b>C1</b><br>4.22<br>(107) |
| <b>C2</b><br>4.47<br>(113) | <b>C3</b><br>2.75<br>(70)   | <b>D</b><br>2.05<br>(52)    | <b>D1</b><br>2.98<br>(76)  | <b>D2</b><br>3.22<br>(82)  |
| <b>E</b><br>1.31<br>(33)   | <b>F</b><br>.75<br>(19)     | <b>G</b><br>.31<br>(8)      | <b>H</b><br>.62<br>(16)    | <b>J</b><br>.20<br>(5)     |
| <b>K</b><br>2.38<br>(60)   | <b>L</b><br>1.88<br>(48)    | <b>M</b><br>.88<br>(22)     | <b>N</b><br>.25<br>(6)     | <b>P</b><br>.17<br>(4)     |
| <b>P1</b><br>.38<br>(10)   | <b>R</b><br>.91<br>(23)     | <b>R1</b><br>1.53<br>(39)   | <b>S</b><br>.62<br>(16)    | <b>S1</b><br>.78<br>(20)   |
| <b>T</b><br>.25<br>(6)     | <b>U</b><br>2.28<br>(58)    | <b>V</b><br>1.19<br>(30)    | <b>W</b><br>.75<br>(19)    | <b>X</b><br>.19<br>(5)     |
| <b>Y</b><br>2.19<br>(56)   |                             |                             |                            |                            |

\* Dimensions may be reduced .44" using adjusting screw.

Inches (mm)

Brass  
Poppet

LV / EZ

MO

Viking  
Lever

42

Directair  
4

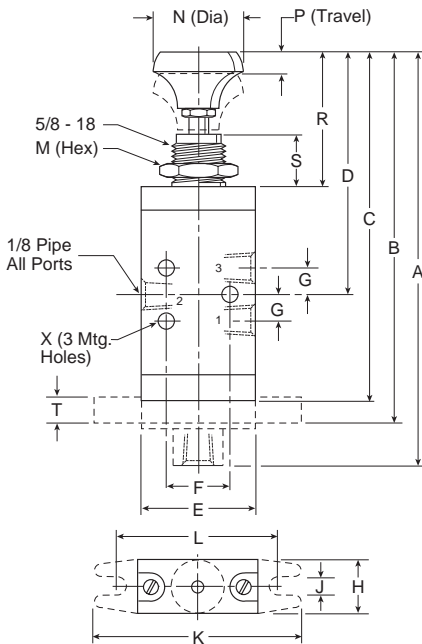
Directair  
2

F

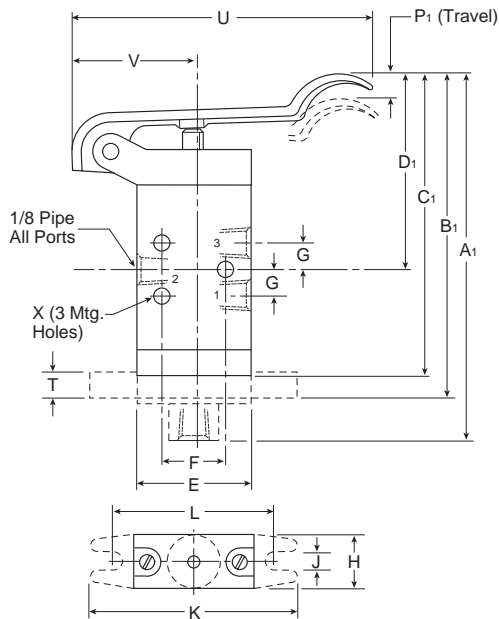
### Button, Hand Lever Operated

3-Way, 3-Port, 2-Position – 1/8" Ports

#### Button Operated



#### Hand Lever Operated



#### 3-Way, 3-Port, 2-Position

|                                      |                                       |                                      |                                      |                           |
|--------------------------------------|---------------------------------------|--------------------------------------|--------------------------------------|---------------------------|
| <b>A</b><br>5.08<br>(129)            | <b>A<sub>1</sub></b><br>4.29<br>(109) | <b>B</b><br>4.55<br>(115)            | <b>B<sub>1</sub></b><br>3.77<br>(96) | <b>C</b><br>4.31<br>(109) |
| <b>C<sub>1</sub></b><br>3.53<br>(90) | <b>D</b><br>3.08<br>(78)              | <b>D<sub>1</sub></b><br>2.29<br>(58) | <b>E</b><br>1.31<br>(33)             | <b>F</b><br>.75<br>(19)   |
| <b>G</b><br>.31<br>(8)               | <b>H</b><br>.62<br>(16)               | <b>J</b><br>.20<br>(5)               | <b>K</b><br>2.38<br>(60)             | <b>L</b><br>1.88<br>(48)  |
| <b>M</b><br>.88<br>(22)              | <b>N</b><br>1.06<br>(27)              | <b>P</b><br>.17<br>(4)               | <b>P<sub>1</sub></b><br>.53<br>(13)  | <b>R</b><br>1.67<br>(42)  |
| <b>S</b><br>.63<br>(16)              | <b>T</b><br>.25<br>(6)                | <b>U</b><br>3.38<br>(86)             | <b>V</b><br>1.19<br>(30)             | <b>X</b><br>.19<br>(5)    |
| <b>Y</b><br>.59<br>(15)              |                                       |                                      |                                      |                           |

Inches (mm)

Brass  
Poppet

LV / EZ

M0

Viking  
Lever

42

Directair  
4

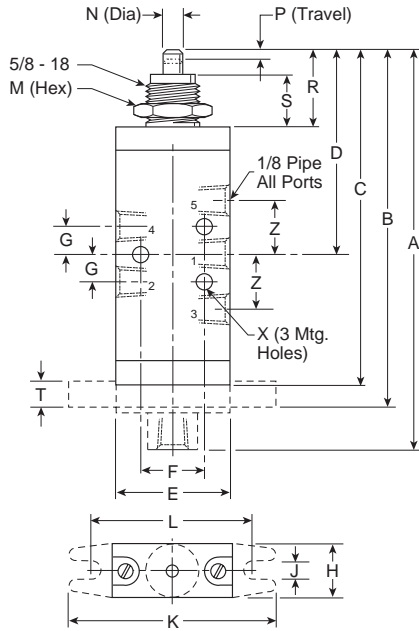
Directair  
2



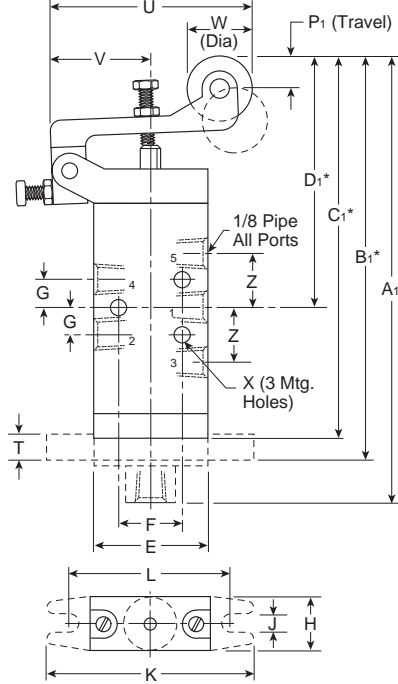
## Plunger, Roller, One-Way Tripper & Toggle Operated

4-Way, 5-Port, 2-Position – 1/8" Ports

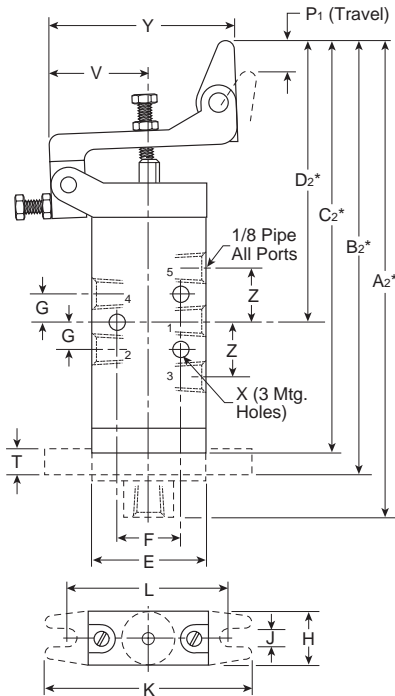
**Plunger Operated**



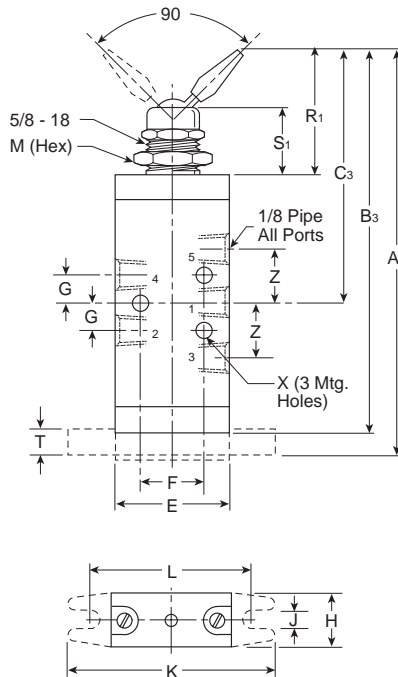
**Roller Operated**



**One-Way Tripper Operated**



**Toggle Operated**



**4-Way, 5-Port, 2-Position**

|                             |                             |                             |                            |                             |
|-----------------------------|-----------------------------|-----------------------------|----------------------------|-----------------------------|
| <b>A</b><br>4.75<br>(121)   | <b>A1*</b><br>5.59<br>(142) | <b>A2*</b><br>5.84<br>(148) | <b>A3</b><br>4.84<br>(123) | <b>B</b><br>4.22<br>(107)   |
| <b>B1*</b><br>5.06<br>(128) | <b>B2*</b><br>5.31<br>(135) | <b>B3</b><br>4.61<br>(117)  | <b>C</b><br>3.99<br>(102)  | <b>C1*</b><br>4.83<br>(123) |
| <b>C2*</b><br>5.08<br>(129) | <b>C3</b><br>3.06<br>(78)   | <b>D</b><br>2.44<br>(62)    | <b>D1*</b><br>3.28<br>(83) | <b>D2*</b><br>3.53<br>(90)  |
| <b>E</b><br>1.31<br>(33)    | <b>F</b><br>.75<br>(19)     | <b>G</b><br>.31<br>(8)      | <b>H</b><br>.62<br>(16)    | <b>J</b><br>.20<br>(5)      |
| <b>K</b><br>2.38<br>(60)    | <b>L</b><br>1.88<br>(48)    | <b>M</b><br>.88<br>(22)     | <b>N</b><br>.25<br>(6)     | <b>P</b><br>.17<br>(4)      |
| <b>P1</b><br>.38<br>(10)    | <b>R</b><br>.91<br>(23)     | <b>R1</b><br>1.53<br>(39)   | <b>S</b><br>.62<br>(16)    | <b>S1</b><br>.78<br>(20)    |
| <b>T</b><br>.25<br>(6)      | <b>U</b><br>2.28<br>(58)    | <b>V</b><br>1.19<br>(30)    | <b>W</b><br>.75<br>(19)    | <b>X</b><br>.19<br>(5)      |
| <b>Y</b><br>2.19<br>(56)    | <b>Z</b><br>.62<br>(16)     |                             |                            |                             |

\* Dimensions may be reduced .44" using adjusting screw.  
 Inches (mm)

Brass  
Poppet

LV / EZ

M0

Viking  
Lever

42

Directair  
4

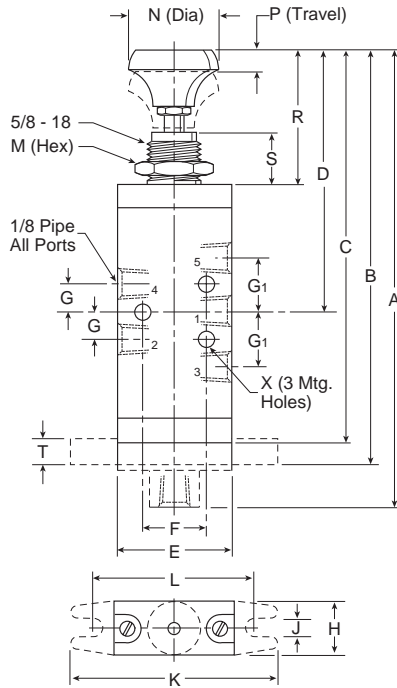
Directair  
2

**F**

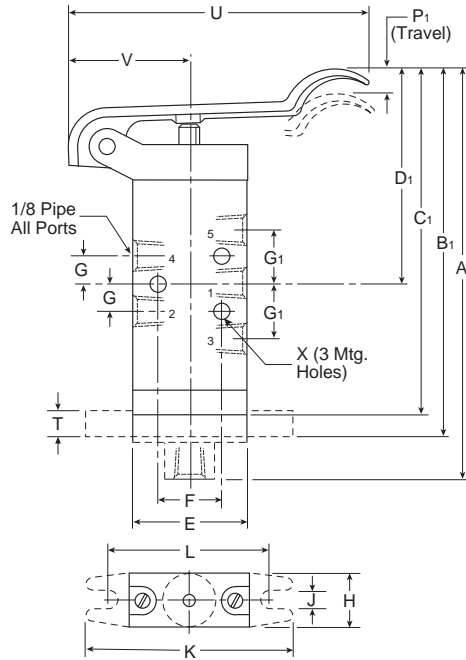
**Button & Hand Lever Operated**

4-Way, 5-Port, 2-Position – 1/8" Ports

**Button Operated**



**Hand Lever Operated**



**4-Way, 5-Port, 2-Position**

|                                       |                                       |                                      |                                       |                                     |
|---------------------------------------|---------------------------------------|--------------------------------------|---------------------------------------|-------------------------------------|
| <b>A</b><br>5.69<br>(144)             | <b>A<sub>1</sub></b><br>4.90<br>(124) | <b>B</b><br>5.16<br>(131)            | <b>B<sub>1</sub></b><br>4.38<br>(111) | <b>C</b><br>4.92<br>(125)           |
| <b>C<sub>1</sub></b><br>4.14<br>(105) | <b>D</b><br>3.67<br>(93)              | <b>D<sub>1</sub></b><br>2.90<br>(74) | <b>E</b><br>1.31<br>(33)              | <b>F</b><br>.75<br>(19)             |
| <b>G</b><br>.31<br>(8)                | <b>G<sub>1</sub></b><br>.63<br>(16)   | <b>H</b><br>.62<br>(16)              | <b>J</b><br>.20<br>(5)                | <b>K</b><br>2.38<br>(60)            |
| <b>L</b><br>1.88<br>(48)              | <b>M</b><br>.88<br>(22)               | <b>N</b><br>1.06<br>(27)             | <b>P</b><br>.17<br>(4)                | <b>P<sub>1</sub></b><br>.53<br>(13) |
| <b>R</b><br>1.67<br>(42)              | <b>S</b><br>.63<br>(16)               | <b>T</b><br>.25<br>(6)               | <b>U</b><br>3.38<br>(86)              | <b>V</b><br>1.19<br>(30)            |
| <b>X</b><br>.19<br>(5)                | <b>Y</b><br>.59<br>(15)               |                                      |                                       |                                     |

Inches (mm)

Brass  
Poppet

LV / EZ

M0

Viking  
Lever

42

Directair  
4

Directair  
2

