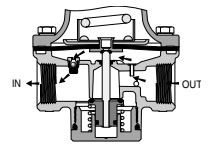
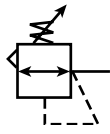


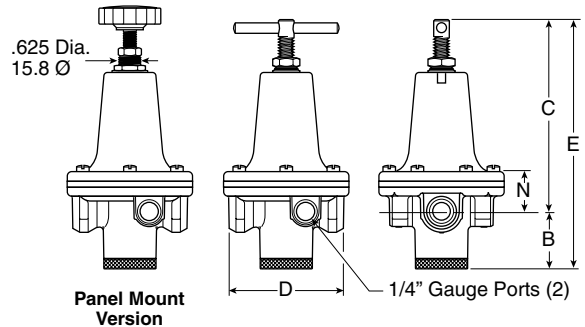
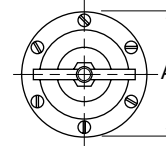
## R119 Regulators – Standard

### Features

- High Flow Performance Featuring Rugged Design for the Most Demanding Applications
- Ideal for Those Installations Calling for Constant Pressure with Wide Variation in Flow
- Diaphragm Operated Design with Balanced Poppet Design for Quick and Accurate Regulation
- Secondary Aspiration Plus Balanced Poppet Provides Quick Response and Accurate Pressure Regulation
- Heavy Duty Tee Handle Adjustment
- Reverse Flow Version Available
- Panel Mount Version Available
- High Flow: 1/4" – 100 SCFM§  
 3/8" – 110 SCFM§  
 1/2" – 150 SCFM§



**X80 Reverse Flow Option**



**Panel Mount Version**

Port Size	NPT Relieving	BSPP Relieving
<b>Without Gauge 0-125 PSIG Reduced Pressure</b>		
1/4"	<b>R119-02C</b>	<b>R119G02C</b>
3/8"	<b>R119-03C</b>	<b>R119G03C</b>
1/2"	<b>R119-04C</b>	<b>R119G04C</b>
<b>With Gauge 0-125 PSIG Reduced Pressure</b>		
1/4"	<b>R119-02CG</b>	—
3/8"	<b>R119-03CG</b>	—
1/2"	<b>R119-04CG</b>	—

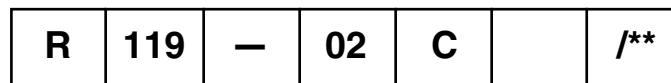
<b>R119 Regulator Dimensions</b>					
A	B	C	D	E	N
<b>R119-02C, R119-03C</b>					
3.00 (76)	1.38 (35)	5.29 (134)	2.74 (70.5)	6.67 (169)	.90 (24)
<b>R119-04C</b>					
3.56 (90)	1.56 (40)	5.34 (136)	3.25 (83)	6.90 (175)	1.45 (37)

inches (mm)

Standard part numbers shown bold.  
 For other models refer to ordering information below.

§ SCFM = Standard cubic feet per minute at 100 PSIG inlet, 75 PSIG no flow secondary setting, and 20 PSIG pressure drop.

### Ordering Information



Port Threads
– NPT
G BSPP

Port Size
<b>02</b> 1/4 Inch
<b>03</b> 3/8 Inch
<b>04</b> 1/2 Inch

Reduced Pressure Range
A 0-25 PSIG
B 0-60 PSIG
<b>C 0-125 PSIG</b>
D 0-250 PSIG

Options
– None
<b>G Gauge</b>
K† Non-Relieving
P Panel Mount
X64** Fluorocarbon O-Rings and Diaphragm
X80* Reverse Flow
X7 Brass Bottom Plug

Engineering Level
* Will be Entered at Factory

\* Reverse flow for use downstream of control valves.  
 \*\* Brass Bottom Plug Standard with X64 Option.  
 † Not available with 250 PSIG spring

**BOLD ITEMS ARE MOST POPULAR.**

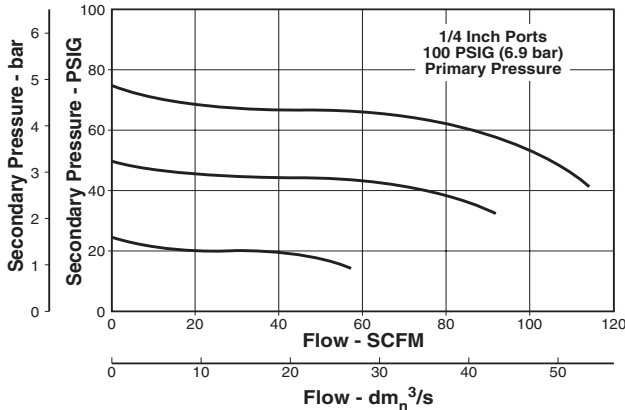


C  
 Product Selection  
 Filters  
 Coalescers  
 Regulators  
 Filter / Regulators  
 Lubricators  
 Combs  
 Accessories

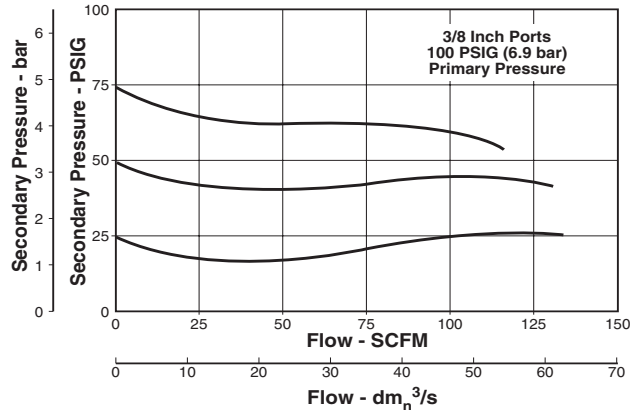
Technical Specifications – R119

Technical Information

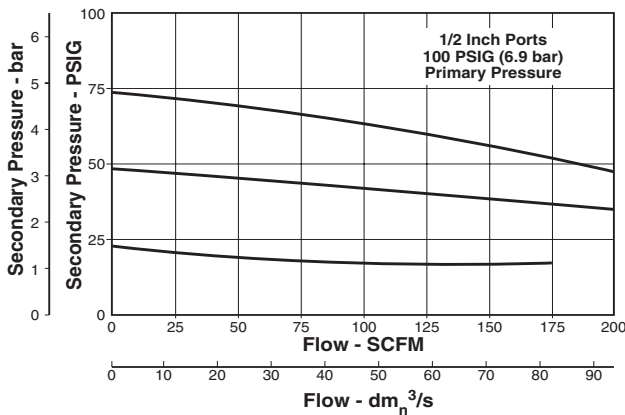
Flow Characteristics  
R119-02C



Flow Characteristics  
R119-03C



Flow Characteristics  
R119-04C



**WARNING**  
Product rupture can cause serious injury.  
Do not connect regulator to bottled gas.  
Do not exceed maximum primary pressure rating.

**CAUTION:**  
**REGULATOR PRESSURE ADJUSTMENT** – The working range of knob adjustment is designed to permit outlet pressures within their full range. Pressure adjustment beyond this range is also possible because the knob is not a limiting device. This is a common characteristic of most industrial regulators, and limiting devices may be obtained only by special design. For best performance, regulated pressure should always be set by increasing the pressure up to the desired setting.

R119 Regulator Kits & Accessories

Gauges –

- 2" Dial Size, 1/4" Back Connection  
0 to 60 PSIG (0 to 400 kPa)..... K4520N14060
- 2" Dial Size, 1/4" Back Connection  
0 to 160 PSIG (0 to 1100 kPa) .....K4520N14160
- 2" Dial Size, 1/4" Back Connection  
0 to 300 PSIG (0 to 2068 kPa) ..... K4520N14300

Mounting Bracket Kit –

- 1/4", 3/8".....SA15Y57
- 1/2"..... 18A57

Panel Mount Conversion Kit –

- 1/4", 3/8" ..... 4202
- 1/2"..... 4204

Repair Kits –

- Non-Relieving Diaphragm,  
Valve Assembly (1/4", 3/8"; All PSIG) .....RK118Y
- Relieving Diaphragm,  
Valve Assembly (1/4", 3/8"; All PSIG) .....RK119Y
- Non-Relieving Diaphragm,  
Valve Assembly (1/2"; 25, 60, 125 PSIG).....RK118A
- Non-Relieving Diaphragm,  
Valve Assembly (1/2"; 250 PSIG) ..... RK118A250
- Relieving Diaphragm,  
Valve Assembly (1/2"; 25, 60, 125 PSIG).....RK119A

- Relieving Diaphragm,  
Valve Assembly (1/2"; 250 PSIG) .....RK119A250
- Spring Cage & T-Handle Kit (1/4 & 3/8) ..... RKC119Y
- Spring Cage & Insert Only Kit (1/2) .....SAC18A3/BK

For Fluorocarbon Repair Kits, add X64 to Kit Number suffix.

Specifications

- Gauge Ports (2)..... 1/4 Inch
- Port Threads..... 1/4, 3/8, 1/2 Inch
- Reduced Pressure Range ..... 2 to 125 PSIG (0.15 to 8.5 bar)
- Supply Pressure ..... 300 PSIG Maximum (20.4 bar)
- Temperature Rating ..... 40°F to 125°F (4.4°C to 52°C)
- Weight –  
R119-02, R119-03 ..... 1.8 lb. (0.82 kg) / Unit  
26 lb. (11.79 kg) / 12-Unit Master Pack
- R119-04..... 3.2 lb. (1.45 kg) / Unit  
27 lb. (12.25 kg) / 8-Unit Master Pack

Materials of Construction

- Adjusting Screw, Springs ..... Steel
- Body, Spring Cage .....Zinc
- Bottom Plug..... Nylon
- Innervalve ..... Brass
- Seals..... Buna N



Product Selection
Filters
Coalescers
Regulators
Filter / Regulators
Lubricators
Compos
Accessories