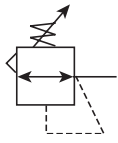
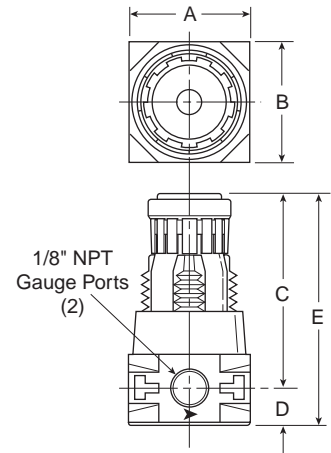


## P3A-R Regulators – Miniature



### Features

- Lightweight plastic body.
- Non-rising adjusting knob.
- Solid control piston with lip seal for extended life.
- Unbalanced poppet standard.
- Two full flow 1/8" gauge ports.
- Reverse flow capability.
- High Flow: 1/8" – 13 SCFM<sup>§</sup>  
 1/4" – 15 SCFM<sup>§</sup>



Port Size	NPT
Without Gauge	
1/8"	<b>P3A-RN91YNN</b>
1/4"	<b>P3A-RN92YNN</b>
With Gauge	
1/8"	<b>P3A-RN91YGN</b>
1/4"	<b>P3A-RN92YGN</b>

P3A-R Regulator Dimensions		
A	B	C
1.57 (40)	1.57 (40)	2.46 (63)
D	E	
0.46 (12)	2.92 (74)	

Inches (mm)

Standard part numbers shown bold. For other models refer to ordering information below.

NOTE: 1.218 Dia. (31mm) hole required for panel mounting.

§ SCFM = Standard cubic feet per minute at 100 psig inlet, 90 psig no flow secondary setting and 10 psig pressure drop.

### Ordering Information



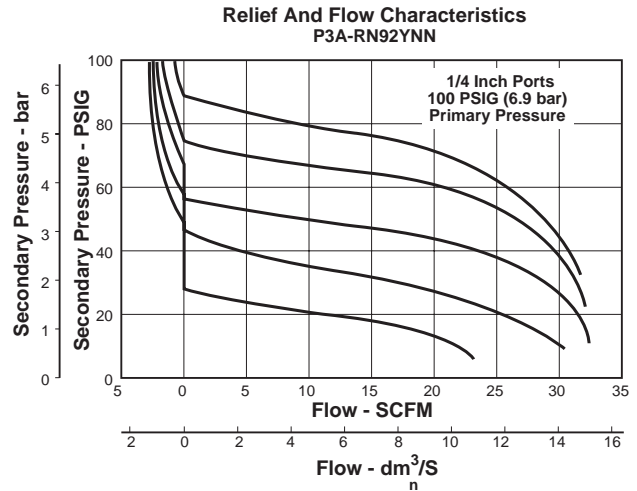
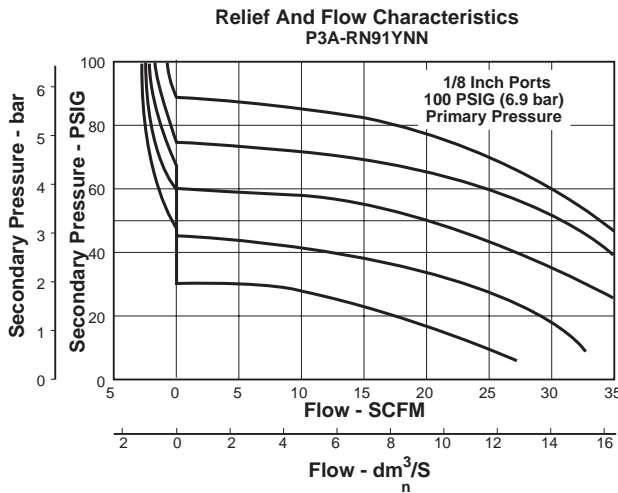
Port Type	Port Size	Relief	Pressure / Gauge	Options	Options	Preset / Pressure Limited
<b>9</b> NPT Female	<b>1</b> 1/8 Inch <b>2</b> 1/4 Inch	<b>Q</b> Non-Relieving <b>Y</b> Relieving	<u>Without Gauge</u> <b>A</b> 15 psig (0 to 1 bar) <b>L</b> 60 psig (0 to 4 bar) <b>N</b> 120 psig (0 to 8 bar) <b>Y</b> 30 psig (0 to 2 bar) <u>With Gauge</u> <b>B</b> 15 psig (0 to 1 bar) <b>G</b> 120 psig (0 to 8 bar) <b>M</b> 60 psig (0 to 4 bar) <b>Z</b> 30 psig (0 to 2 bar)	<b>L*</b> Preset Non-Adjustable <b>N</b> No Options <b>P*</b> Preset Adjustable <b>S*</b> Pressure Limiter Adjustable <b>T*</b> Pressure Limiter Non-Adjustable	<b>N</b> None	<b>Blank</b> None <b>XXX*</b> Preset Pressure <b>XXX*</b> Pressure Limited

\* Inlet Pressure is 100 psig. For other pressures, contact factory.

\* Available Preset / Pressure Limited Range, 10 to 90 psig in 5 psig increments. For higher pressures, contact factory. (Example: 065 = 65 psig)

**BOLD ITEMS ARE MOST POPULAR.**

Technical Information



**CAUTION:**

**REGULATOR PRESSURE ADJUSTMENT** – The working range of knob adjustment is designed to permit outlet pressures within their full range. Pressure adjustment beyond this range is also possible because the knob is not a limiting device. This is a common characteristic of most industrial regulators, and limiting devices may be obtained only by special design.

For best performance, regulated pressure should always be set by increasing the pressure up to the desired setting.

**⚠ WARNING**

**Product rupture can cause serious injury.  
Do not connect regulator to bottled gas.  
Do not exceed maximum primary pressure rating.**

**P3AR Regulator Kits & Accessories**

- Gauges – 30 psig, 1/8" NPT (0 to 2.1 bar) ..... K4515N18030
- 60 psig, 1/8" NPT (0 to 4.1 bar) ..... K4515N18060
- 160 psig, 1/8" NPT (0 to 11.0 bar) ..... K4515N18160

Mounting Bracket Kit\* (Includes Panel Mount Nut) ..... PS417BP

Panel Mount Nut\* ..... P78652

- Poppet / Piston Kits – Unbalanced, Non-Relieving ..... PS428P
- Unbalanced, Relieving ..... PS426P

- Springs – 1-15 psig Spring (Yellow) ..... P01176
- 1-30 psig Spring (Black) ..... P01175
- 1-60 psig Spring (White) ..... P01174
- 5-110 psig Spring (Gold) ..... P01173

**Specifications**

Gauge Ports (2) ..... 1/8 Inch

Operating Pressure Range – **psig bar**

<b>Primary –</b>	Maximum	120	8.3
<b>Secondary –</b>			
15 psig Spring	Minimum	1	0.07
	Maximum	15	1.0
30 psig Spring	Minimum	6	0.4
	Maximum	30	2.1
60 psig Spring	Minimum	6	0.4
	Maximum	60	4.1
110 psig Spring	Minimum	6	0.4
	Maximum	110	7.6

Operating Temperature Range ..... 32°F to 125°F (0°C to 52°C)

Port Threads ..... 1/8, 1/4 Inch

Weight ..... 0.23 lb. (0.10 kg)

**Materials of Construction**

- Adjusting Nut ..... Brass
- Adjusting Stem & Spring ..... Steel
- Poppet Return Spring ..... Stainless Steel
- Body ..... Plastic
- Bonnet, Seat & Piston ..... Plastic
- Seals ..... Nitrile
- Valve Poppet ..... Plastic & Nitrile

\*Tighten panel mount nut 2.8 to 3.4 Nm (25 to 30 in-lbs) of torque.



- C**
- Product Selection
- Filters
- Coalescers
- Regulators
- Filter / Regulators
- Lubricators
- Combos
- Accessories