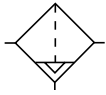


35F, 43F Filters – Hi-Flow



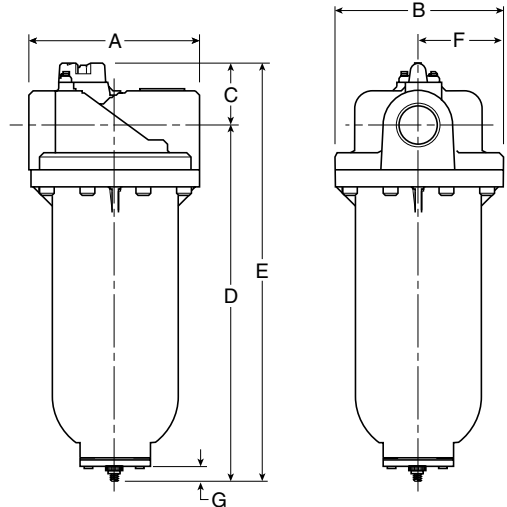
Auto Drain



Features

- Heavy-duty cast aluminum housings to withstand operating pressures up to 250 PSIG*
- Differential pressure indicator to eliminate the guesswork of element replacement
- Differential pressure gauge available, order separately, Kit DP3-01-000
- Unique drain mounting plate design offers a trouble-free method for interchanging and installing external drains
- High Flow: 1-1/2" – 1280 SCFM[§]
 2" – 1400 SCFM[§]
 3" – 2900 SCFM[§]

* Without Differential Pressure Indicator –
 Max. supply pressure is 250 PSIG (20.7 bar).



	Port size	Element type	Part number (NPT)
			Automatic drain
35F	1-1/2	5 micron	35F77BAP
	2	5 micron	35F87BAP
43F	3	5 micron	43FN7BAP

35F Filter Dimensions						
A	B	C	D	E	F	G
7.80 (198)	7.75 (197)	2.81 (71)	16.24 (412.5)	19.07 (484)	3.88 (98.6)	.55 (14)
43F Filter Dimensions						
A	B	C	D	E	F	G
8.94 (227)	8.88 (225.5)	3.48 (88)	25.96 (659.4)	29.44 (748)	4.44 (112.8)	.55 (14)

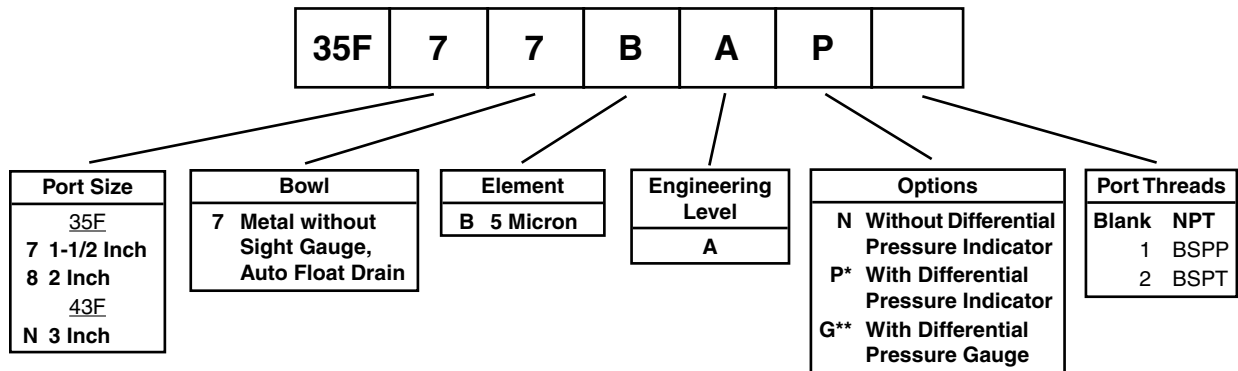
inches (mm)

Standard part numbers shown bold.

For other models refer to ordering information below.

[§] SCFM = Standard cubic feet per minute at 90 psig inlet and 5 psig pressure drop.

Ordering Information



* Max. pressure rating 150 PSIG.

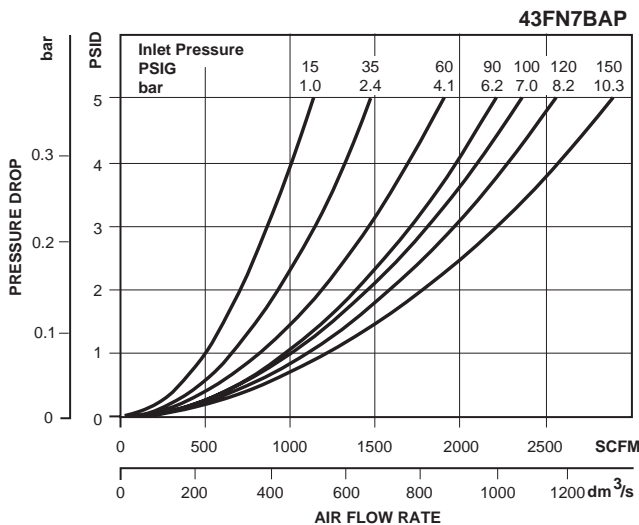
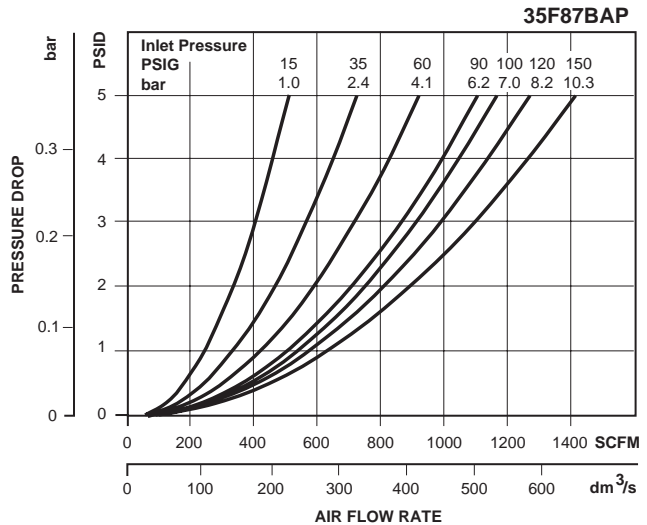
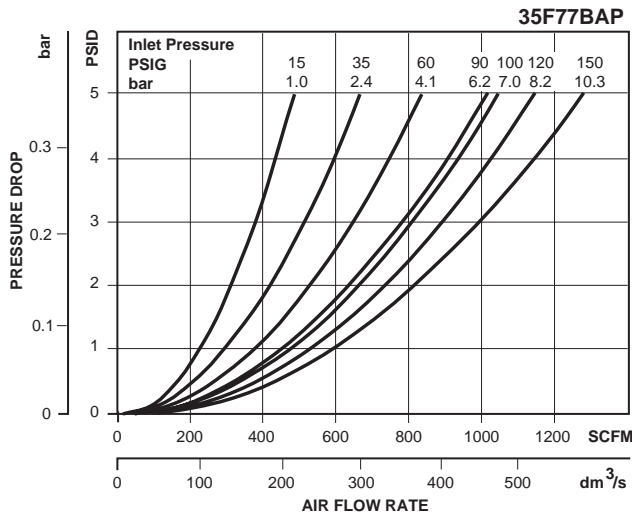
** Gauge ships loose.

BOLD ITEMS ARE MOST POPULAR.



Technical Specifications – 35F, 43F

Technical Information



35F & 43F Filter Kits & Accessories

- Differential Pressure Indicator Cap –
For pressures over 150 PSIG GRP-95-022
- Differential Pressure Gauge..... DP3-01-000
- Differential Pressure Indicator..... DP2-02-001
- Drain, Automatic, Internal, Fluorocarbon,
1/8 NPT.....GRP-95-981
- Drain Plate Kit –
1/2 NPT Tapped Drain Port GRP-95-393
- Element
35F, 5 Micron FRP-95-505
43F, 5 Micron FRP-95-508
- Manual Drain Kit
with 1/2" Drain Plate GRP-95-392

Specifications

- Maximum Supply Pressure without DPI and with Pressure Gauge.....250 PSIG (17.2 bar)*
with DPI..... 150 PSIG (10.3 bar)
- Operating Temperature32° to 150°F (0° to 65.5°C)

Port Size –

- 35F 1-1/2, 2 Inch
- 43F 3 Inch

Standard Filtration..... 5 Micron

Weight –

- 35F19.3 lb. (8.7 kg)
- 43F 32.8 lb. (14.9 kg)

* Without pressure indicator

Materials of Construction

- BafflePlated Steel
- Body Aluminum
- Bowls..... Aluminum
- Deflector.....Plated Steel
- Element RetainerPlated Steel
- Filter Element Polyethylene
- Seals.....Fluorocarbon
- StudPlated Steel

Product Selection
Filters
Coalescers
Regulators
Filter / Regulators
Lubricators
Combos
Accessories

