

02F Coalescing Filters – Miniature

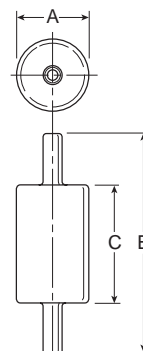


Features

- Clear nylon housing.
- Full length support tube.
- Positive tube seals.
- Optional filter grades available.
- Disposable.
- High Flow: Grade 6 – 3.5 SCFM[§]
 Grade 10 – 5.3 SCFM[§]

Application

The 02F Miniature In-line Filter is designed to remove 99.9%+ of the aerosols and sub-micron particles from your air system.



| Port Size | Model | Element |
|--------------|----------------|-----------------------------|
| 1/4" I.D. | 02FA06A | Grade 6 |
| | 02FA10A | Grade 10 |
| | 02FA22A | Grade 6 (oil activated dye) |

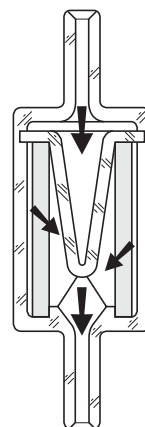
[§] SCFM @ 1 PSID Operating Pressure 100 psig.

| 02F Coalescing Filter Dimensions | | |
|-------------------------------------|--------------|--------------|
| A | B | C |
| 1.00 (25) | 3.28 (83) | 1.69 (43) |

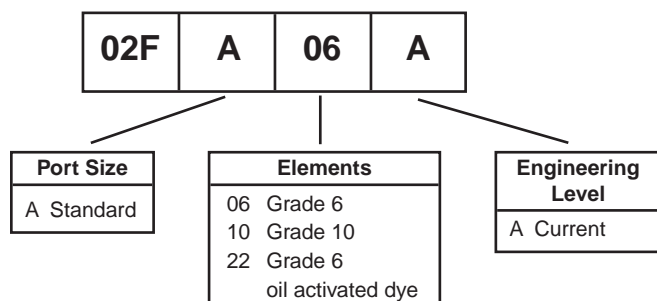
Inches (mm)

Operation

The contaminated air enters the filters interior and is forced through the elements membrane of Borosilicate glass fibers. Contaminants and aerosols are collected and distributed evenly along the entire tubes length. This is accomplished by the use of the “center post” which not only provides this “drop out pocket”, but also provides a stable support.



Ordering Information



Specifications

Port Size 1/4 I.D. Hose Slip On Tang Standard
 Pressure & Temperature Ratings –
 100 psig at 125°F (0.69 bar at 52°C) or less

Materials of Construction

Element Borosilicate & Felt Glass Fibers
 Housing Nylon