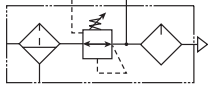


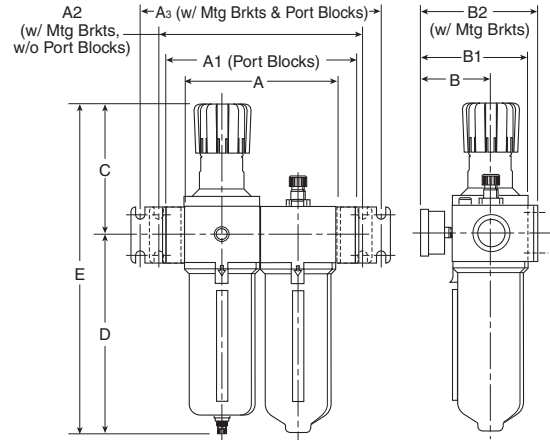
## Modular Combinations – P3N Hi-Flow Series

- Regulator can be mounted with knob in up or down position.
- See individual component pages for details.

### Two-Unit Combo



- 40 Micron Filter Element
- Manual Twist Drain
- Relieving Regulator
- 125 PSI (8.6 bar)



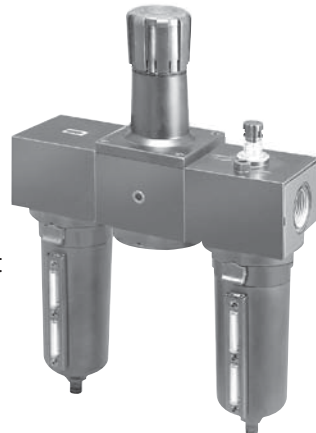
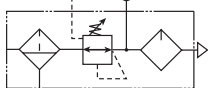
Series	Port	Model Numbers
P3NCA	3/4"	P3NCA96SGMNNLNA
	1"	P3NCA98SGMNNLNA
	1-1/2" †	P3NCA9PSGMNNLNA

<b>A</b>	<b>A<sub>1</sub></b>	<b>A<sub>2</sub></b>	<b>A<sub>3</sub></b>	<b>B</b>	<b>B<sub>1</sub></b>	<b>B<sub>2</sub></b>
7.24 (184)	9.53 (242)	9.84 (250)	12.13 (308)	3.62 (92)	5.20 (132)	5.74 (146)
<b>C</b>	<b>D</b>	<b>E</b>				
6.38 (162)	9.57 (243)	15.95 (405)				

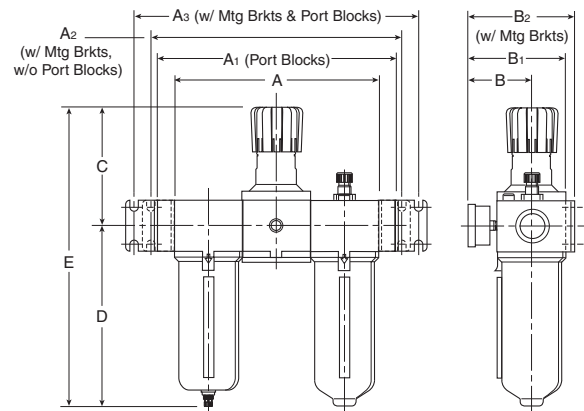
Notes: All Combo part numbers are with regulator knob in up position.  
 † 1" Port Body with 1-1/2" Port Block.  
 For other models, refer to Ordering Information on next page.

- Inches (mm)
- All dimensions nominal.
  - Mounting brackets not included (change last character in model number to "B" if required).
  - Gauges not included (change 12th character to "G" if required).

### Three-Unit Combo



- 40 Micron Filter Element
- Manual Twist Drain
- Relieving Regulator
- 125 PSI (8.6 bar)



Series	Port	Model Numbers
P3NCB	3/4"	P3NCB96SGMNNLNA
	1"	P3NCB98SGMNNLNA
	1-1/2"†	P3NCB9PSGMNNLNA

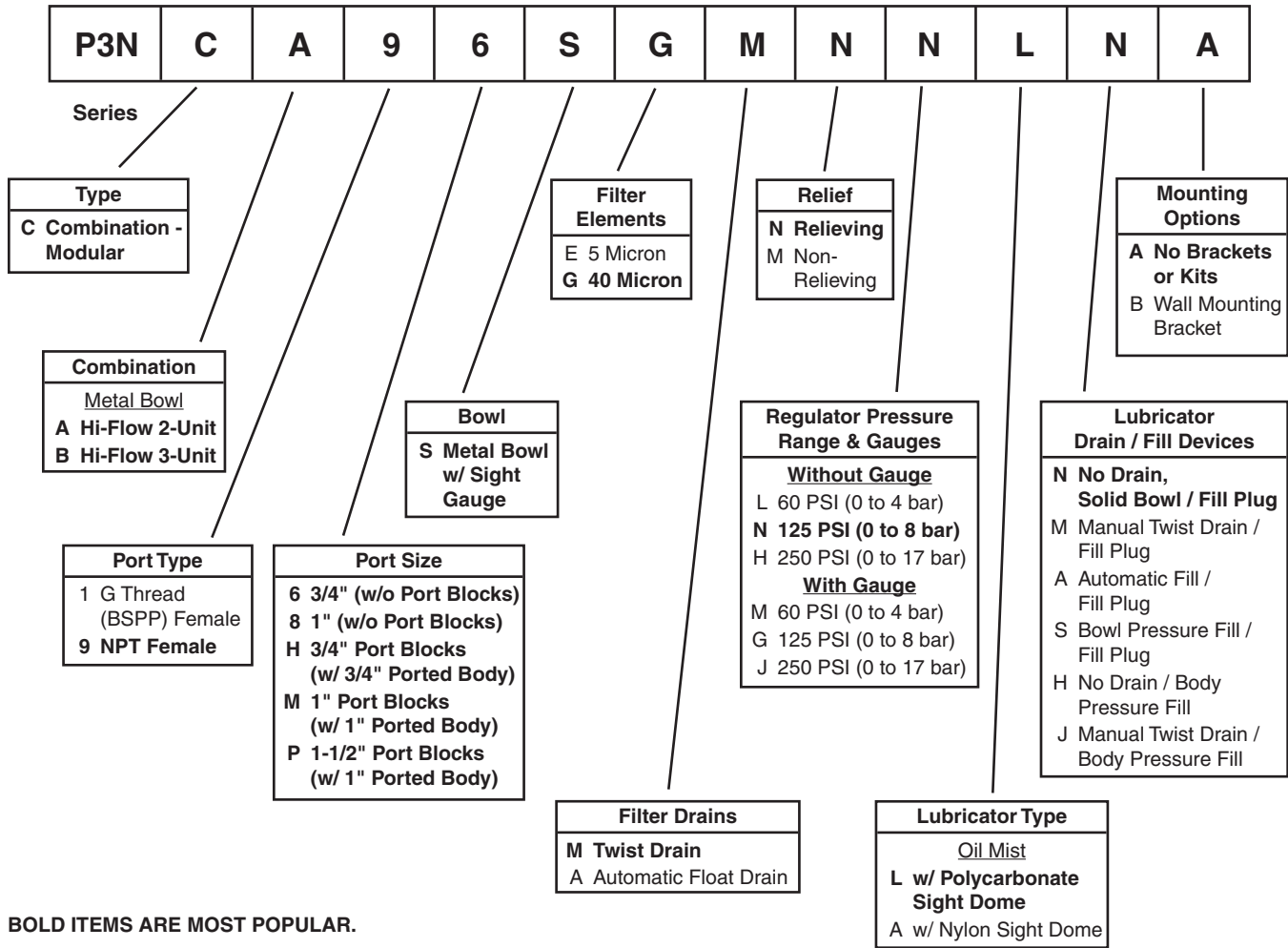
<b>A</b>	<b>A<sub>1</sub></b>	<b>A<sub>2</sub></b>	<b>A<sub>3</sub></b>	<b>B</b>	<b>B<sub>1</sub></b>	<b>B<sub>2</sub></b>
10.87 (276)	13.15 (334)	13.46 (342)	15.75 (400)	3.62 (92)	5.20 (132)	5.74 (146)
<b>C</b>	<b>D</b>	<b>E</b>				
6.38 (162)	9.57 (243)	15.95 (405)				

Notes: All Combo part numbers are with regulator knob in up position.  
 † 1" Port Body with 1-1/2" Port Block.  
 For other models, refer to Ordering Information on next page.

- Inches (mm)
- All dimensions nominal.
  - Mounting brackets not included (change last character in model number to "B" if required).
  - Gauges not included (change 12th character to "G" if required).

**Modular Combinations – P3N Hi-Flow Series**

**Ordering Information**



**BOLD ITEMS ARE MOST POPULAR.**

**CAUTION:**

**REGULATOR PRESSURE ADJUSTMENT** – The working range of knob adjustment is designed to permit outlet pressures within their full range. Pressure adjustment beyond this range is also possible because the knob is not a limiting device. This is a common characteristic of most industrial regulators, and limiting devices may be obtained only by special design.

For best performance, regulated pressure should always be set by increasing the pressure up to the desired setting.

**⚠ WARNING**

**Product rupture can cause serious injury.  
 Do not connect regulator to bottled gas.  
 Do not exceed maximum primary pressure rating.**

**Kits & Accessories** (See individual component sections for other kits and accessories.)

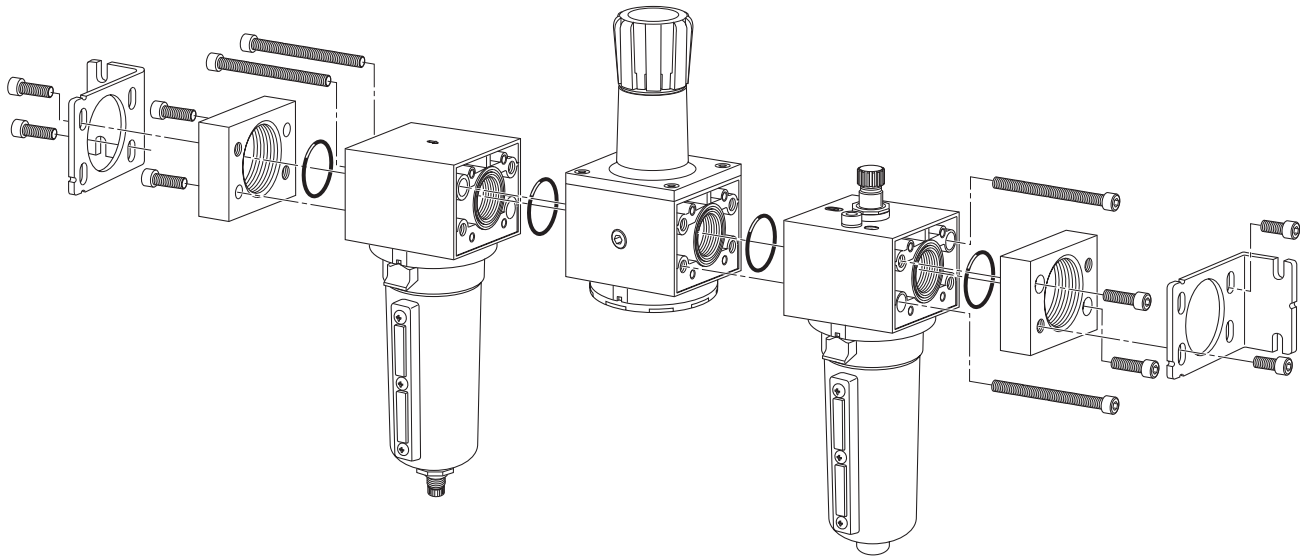
<p><b>Port Block Kits: For Modular Combinations</b></p> <table style="width: 100%; border-collapse: collapse;"> <tr> <td style="width: 33%;"></td> <td style="width: 33%; text-align: center;"><b>3/4"</b></td> <td style="width: 33%; text-align: center;"><b>1"</b></td> <td style="width: 33%; text-align: center;"><b>1-1/2"</b></td> </tr> <tr> <td>NPT .....</td> <td>P3NKB96CL .....</td> <td>P3NKB98CL .....</td> <td>P3NKB9BCL .....</td> </tr> <tr> <td>BSPP .....</td> <td>P3NKB16CL* .....</td> <td>P3NKB18CL* .....</td> <td>P3NKB1BCL* .....</td> </tr> </table>		<b>3/4"</b>	<b>1"</b>	<b>1-1/2"</b>	NPT .....	P3NKB96CL .....	P3NKB98CL .....	P3NKB9BCL .....	BSPP .....	P3NKB16CL* .....	P3NKB18CL* .....	P3NKB1BCL* .....	<p><b>Wall Mounting Kit*</b> ..... P3NKA00MW</p> <p><small>* If 1-1/2 BSPP E02 fittings are required, use P3NKA0BMW.</small></p>
	<b>3/4"</b>	<b>1"</b>	<b>1-1/2"</b>										
NPT .....	P3NKB96CL .....	P3NKB98CL .....	P3NKB9BCL .....										
BSPP .....	P3NKB16CL* .....	P3NKB18CL* .....	P3NKB1BCL* .....										

\* 3/4, 1 & 1-1/2 inch meet ISO 1179-1 Standard.

C	Product Selection
F	Filters
C	Coalescers
R	Regulators
F	Filter / Regulators
L	Lubricators
C	Combos
A	Accessories



**Modular Accessories – P3N Hi-Flow Series**

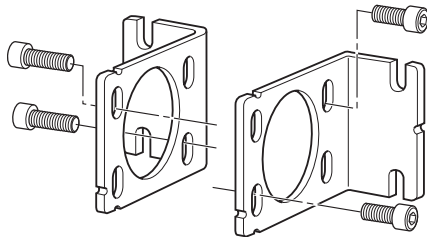


	Product Selection
Filters	
Coalescers	
Regulators	
Filter / Regulators	
Lubricators	
Combos	
Accessories	

**Mounting Brackets**

**P3NKA00MW**

For 1-1/2" BSPP Port Block with E02 fitting application, use **Mounting Bracket Kit P3NKA00MW**



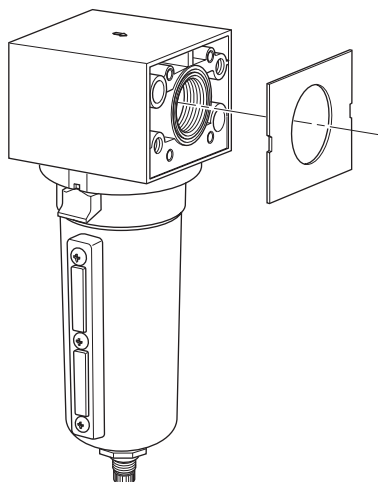
For modular combinations, one side has groove and the mating side is flat. Use the o-ring seal provided in the groove. For some modular combinations, both surfaces may have grooves. In those applications, use o-ring in one groove and square seal provided in the other.

**Replacement Body Covers**

**P3NKA00PM**

Each Kit contains two covers.

All units are shipped with body covers.



**Port Block Kits**

3/4"                      1"                      1-1/2"

Individual Filters, Individual Regulators and 2-Piece Filter and Regulator Assemblies:

- NPT    P3NKB96CP ..... P3NKB98CP ..... P3NKB9BCP
- BSPP P3NKB16CP\* ..... P3NKB18CP\* ..... P3NKB1BCP\*

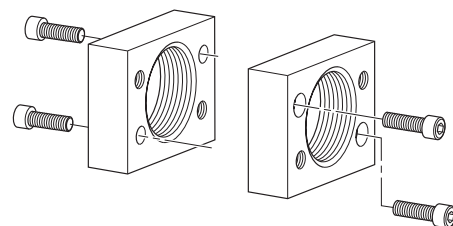
2 and 3 Piece Combinations including a Lubricator (FR/L & FRL), Individual Lubricators, Individual Coalescing Filters and 2-Piece Filter and Coalescer Assemblies:

- NPT    P3NKB96CL ..... P3NKB98CL ..... P3NKB9BCL
- BSPP P3NKB16CL\* ..... P3NKB18CL\* ..... P3NKB1BCL\*

Port Block Kits allow units to be installed or removed as modular components.

Each Kit includes all the necessary pieces to make two port connections.

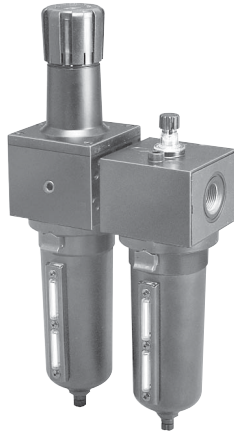
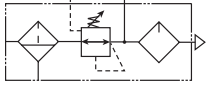
\* 3/4, 1 & 1-1/2 inch meet ISO 1179-1 Standard.



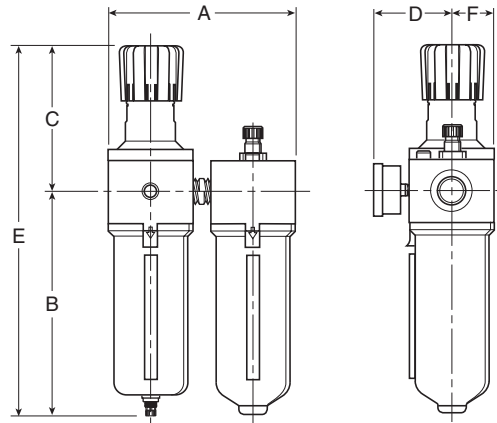
## Close Nippled Combinations – P3N Hi-Flow Series

- Regulator can be mounted with knob in up or down position.
- See individual component pages for details.

### Two-Unit Combo



- 40 Micron Filter Element
- Manual Twist Drain
- Relieving Regulator
- 125 PSI (8.6 bar)



Series	Port	Model Numbers
P3N3A	3/4"	P3N3A96SGMNNLNA
	1"	P3N3A98SGMNNLNA
	1-1/2"†	P3N3A9PSGMNNLNA

A	B	C	D	E	F
7.76 (197)	9.57 (243)	6.38 (162)	3.56 (90)	15.95 (405)	1.81 (50)

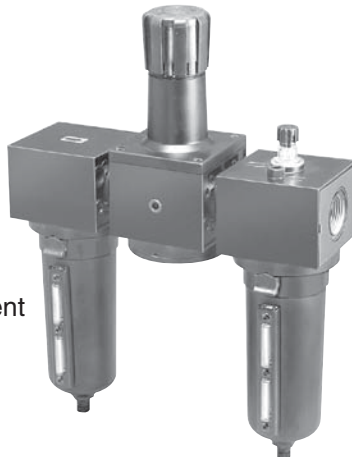
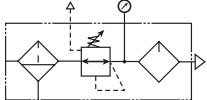
Inches (mm)

- All dimensions nominal.
- **Mounting brackets not included (change last character in model number to "B" if required).**
- **Gauges not included (change 12th character to "G" if required).**

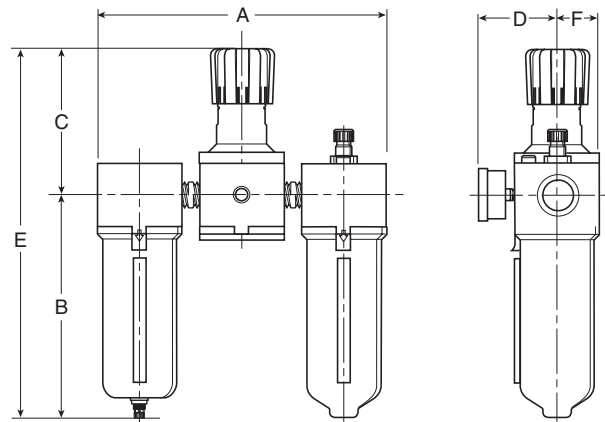
**Notes:** All Combo part numbers are with regulator knob in up position.  
 † 1" Port Body with 1-1/2" Port Block.

For other models, refer to Ordering Information on next page.

### Three-Unit Combo



- 40 Micron Filter Element
- Manual Twist Drain
- Relieving Regulator
- 125 PSI (8.6 bar)



Series	Port	Model Numbers
P3N3B	3/4"	P3N3B96SGMNNLNA
	1"	P3N3B98SGMNNLNA
	1-1/2"†	P3N3B9PSGMNNLNA

A	B	C	D	E	F
11.89 (302)	9.57 (243)	6.38 (162)	3.56 (90)	15.95 (405)	1.81 (50)

Inches (mm)

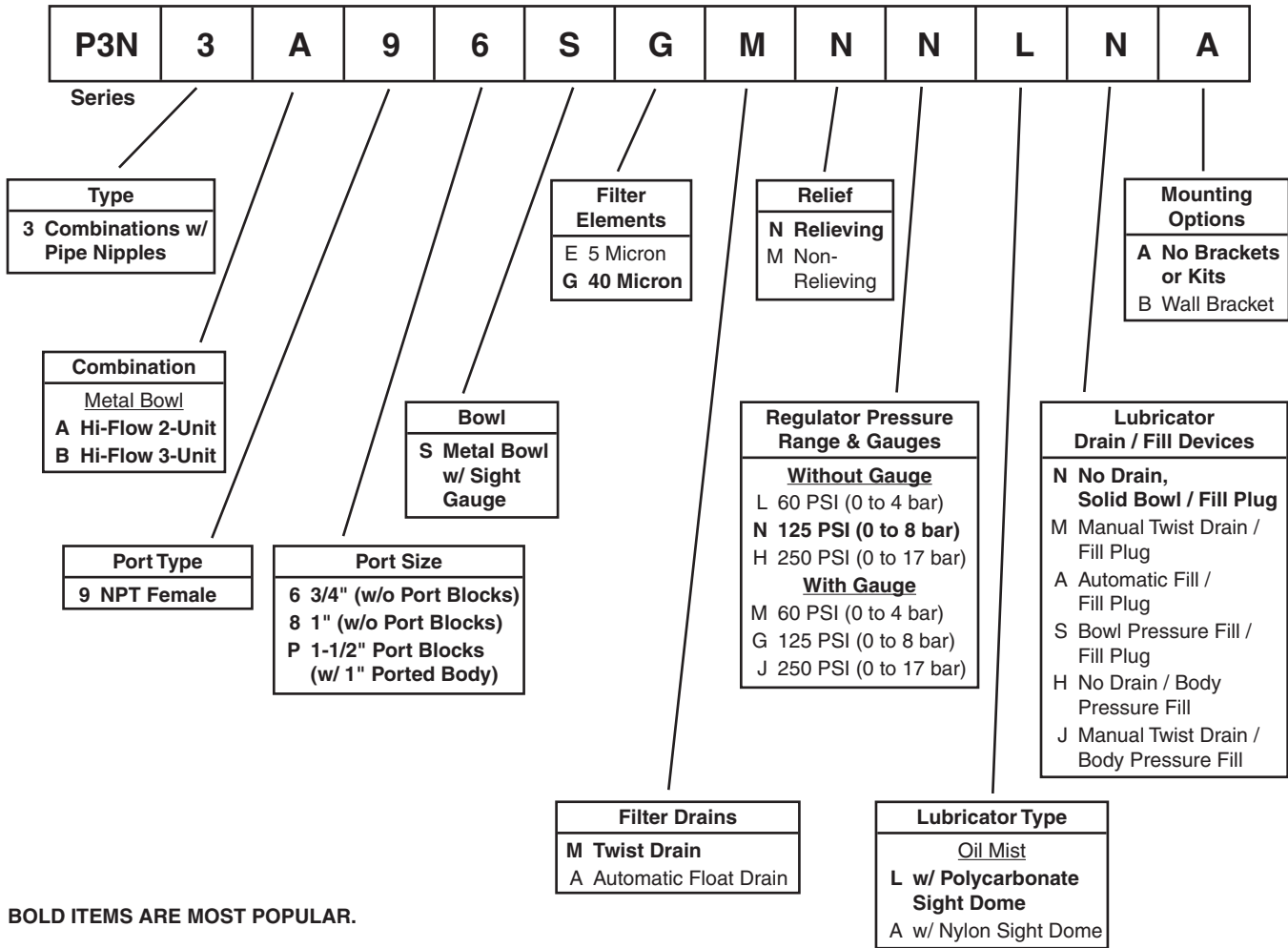
- All dimensions nominal.
- **Mounting brackets not included (change last character in model number to "B" if required).**
- **Gauges not included (change 12th character to "G" if required).**

**Notes:** All Combo part numbers are with regulator knob in up position.  
 † 1" Port Body with 1-1/2" Port Block.

For other models, refer to Ordering Information on next page.

**Close Nippled Combinations – P3N Hi-Flow Series**

**Ordering Information**



**BOLD ITEMS ARE MOST POPULAR.**

**CAUTION:**

**REGULATOR PRESSURE ADJUSTMENT** – The working range of knob adjustment is designed to permit outlet pressures within their full range. Pressure adjustment beyond this range is also possible because the knob is not a limiting device. This is a common characteristic of most industrial regulators, and limiting devices may be obtained only by special design.

For best performance, regulated pressure should always be set by increasing the pressure up to the desired setting.

<b>WARNING</b> <b>Product rupture can cause serious injury.</b> <b>Do not connect regulator to bottled gas.</b> <b>Do not exceed maximum primary pressure rating.</b>
--

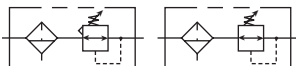
**Kits & Accessories** (See individual component sections for other kits and accessories.)

Wall Mounting Kit\* .....P3NKA00MW

\* If 1-1/2 BSPP E02 fittings are required, use P3NKA0BMW.

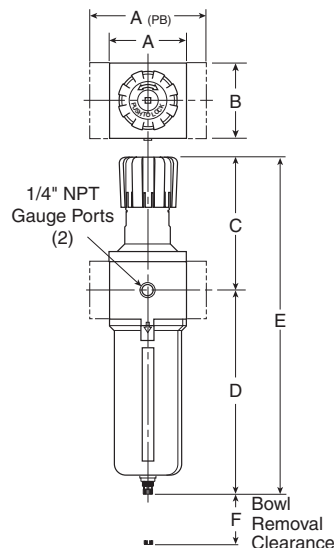
C	Product Selection
	Filters
	Coalescers
	Regulators
	Filter / Regulators
	Lubricators
	Combos
	Accessories

## P3NE Filter / Regulator – Hi-Flow



### Features

- Port blocks (PB) available to provide 1-1/2" port extension to 1" ported bodies.
- Excellent water removal efficiency.
- Metal bowl with sight gauge.
- Large filter element surface guarantees low pressure drop and increased element life.
- Twist drain as standard, optional auto drain.
- Self relieving feature plus balanced poppet provides quick response and accurate pressure regulation.
- Solid control piston for extended life.
- High Flow: 3/4" – 250 SCFM<sup>§</sup>  
 1" – 250 SCFM<sup>§</sup>  
 1-1/2" – 250 SCFM<sup>§</sup>



Port Size	NPT	
	Twist Drain	Automatic Float Drain
Metal Bowl / Sight Gauge		
3/4"	<b>P3NEA96GSMBNN</b>	<b>P3NEA96GSABNN</b>
1"	<b>P3NEA98GSMBNN</b>	<b>P3NEA98GSABNN</b>
1-1/2"	<b>P3NEA9PGSMBNN</b>	<b>P3NEA9PGSABNN</b>

P3NE Filter / Regulator Dimensions			
A	A <sup>(PB)</sup>	B	C
3.62 (92)	5.91 (150)	3.62 (92)	6.38 (162)
D <sup>†</sup>	E <sup>†</sup>	F	
9.57 (243)	15.95 (405)	4.92 (125)	

Standard part numbers shown bold. For other models refer to ordering information below.

\* 1" Port Body with 1-1/2" Port Block.

§ SCFM = Standard cubic feet per minute at 90 psig inlet and 5 psig pressure drop, with 40 micron element.

Inches (mm)  
 † With Twist Drain or Auto Float Drain

**⚠ WARNING**

**Product rupture can cause serious injury.**  
**Do not connect regulator to bottled gas.**  
**Do not exceed maximum primary pressure rating.**

### Ordering Information



Design Level	Port Type	Port Size	Element	Bowl	Drains	Relief	Adjustment	Pressure Range
	1* G Thread (BSPP) Female	6 3/4" (w/o Port Blocks)	A Adsorber	S Metal Bowl w/ Sight Gauge	M Twist Drain	B Relieving	N Non-Rising Knob	<u>w/o Gauge</u>
	2 Rc Thread (BSPT) Female	8 1" (w/o Port Blocks)	E 5 Micron		A Automatic Float Drain	N Non-Relieving		L 60 PSI (0 to 4 bar)
	9 NPT Female	P 1-1/2" Port Blocks (w/ 1" Ported Body)	G 40 Micron					N 125 PSI (0 to 8 bar)
								H 250 PSI (0 to 17 bar)
								<u>w/ Gauge</u>
								M 60 PSI (0 to 4 bar)
								G 125 PSI (0 to 8 bar)
								J 250 PSI (0 to 17 bar)

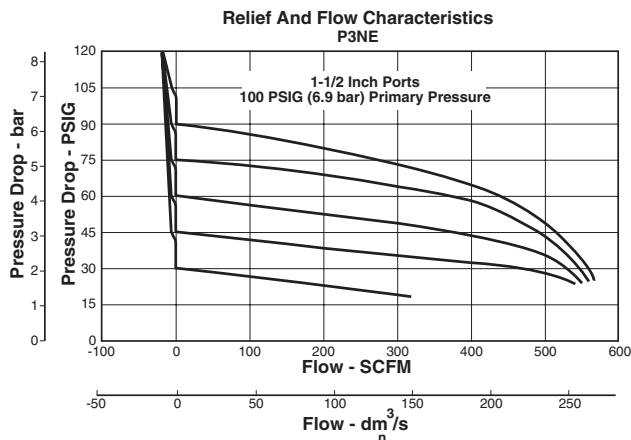
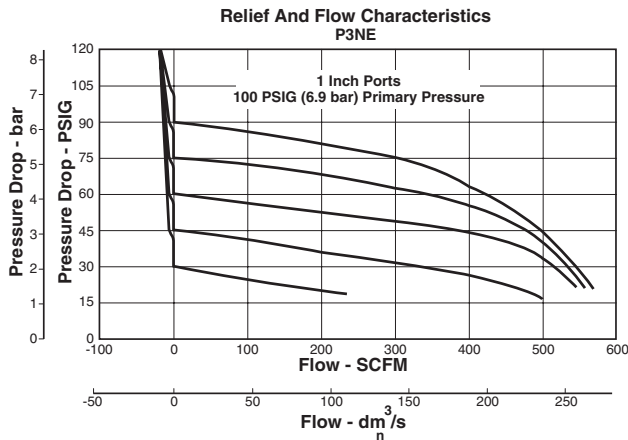
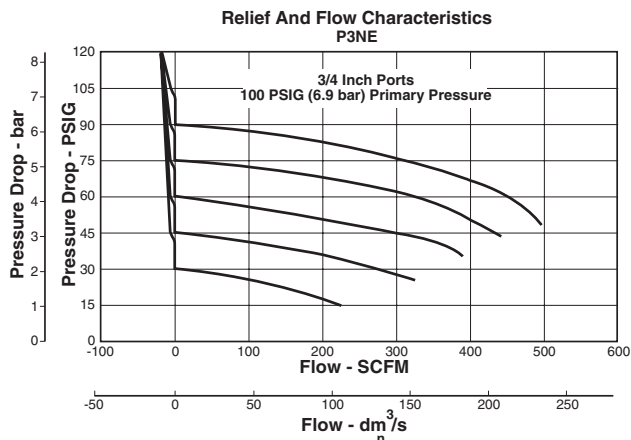
\* 3/4 & 1 inch meet ISO 1179-1 Standard.

**BOLD ITEMS ARE MOST POPULAR.**



Product Selection  
 Filters  
 Coalescers  
 Regulators  
 Filter / Regulators  
 Lubricators  
 Combs  
 Accessories

**Technical Information**



**CAUTION:**

**REGULATOR PRESSURE ADJUSTMENT** – The working range of knob adjustment is designed to permit outlet pressures within their full range. Pressure adjustment beyond this range is also possible because the knob is not a limiting device. This is a common characteristic of most industrial regulators, and limiting devices may be obtained only by special design.

For best performance, regulated pressure should always be set by increasing the pressure up to the desired setting.

**P3NE Filter / Regulator Kits & Accessories**

**Bowl Kits –**

- Metal Bowl – Sight Gauge / Automatic Float Drain.....P3NKA00BSA
- Sight Gauge / Twist Drain.....P3NKA00BSM
- Sight Gauge / Push ‘N’ Drain.....P3NKA00BSP

**Bowl Latch Kit** .....C11A33

**Control Knob** .....P3NKA00PN

- Drain Kit –** Automatic Float Drain.....PS506P
- Semi-Auto Drain.....PS511P
- Twist Drain.....PS512P
- Push ‘N’ Drain.....PS513P

- Filter Element Kits –** 40 Micron.....P3NKA00ESG
- 5 Micron.....P3NKA00ESE
- Adsorber.....P3NKA00ESA

- Gauges –** 60 psig (0 to 4.1 bar).....K4520N14060
- 160 psig (0 to 11.0 bar).....K4520N14160
- 300 psig (0 to 20.0 bar).....K4520N14300

**Mounting Bracket Kit\*** .....P3NKA00MW

- Service Kit –** Relieving.....P3NKA00RR
- Non-Relieving.....P3NKA00RN

**Sight Gauge Kit** .....P3NKA00PE

- Springs –** 1-60 psig Range.....C10A1304
- 2-125 psig Range.....C10A1308
- 5-250 psig Range.....C10A1317

\* If 1-1/2 BSPP E02 fittings are required, use P3NKA00BMW.

**Specifications**

- Bowl Capacity** .....18.0 Ounces
- Gauge Ports (2)** .....1/4 Inch
- Port Threads** .....3/4, 1, 1-1/2" Inch
- Pressure & Temperature Rating** –.....0 to 250 psig (0 to 17.2 bar)  
 32°F to 175°F (0°C to 80°C)  
*For Secondary Pressure Ranges see above charts.*  
 Automatic Float Drain – 15 to 250 psig (1.0 to 17.2 bar)
- Sump Capacity** .....6.8 Ounces
- Weight –** 3/4" .....5.3 lb. (2.4 kg)
- 1" .....5.3 lb. (2.4 kg)
- 1-1/2"\* .....6.43 lb. (2.9 kg)

**Materials of Construction**

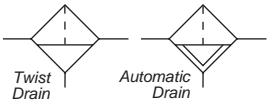
- Adjusting Stem** .....Steel
- Body, Bonnet, Bowl** .....Aluminum
- Drain** .....Plastic
- Filter Elements –** 40 Micron (Standard).....Plastic
- 5 Micron (Optional).....Plastic
- Adsorber (Optional).....Activated Charcoal
- Knob** .....Plastic
- Piston** .....Plastic
- Seals** .....Nitrile
- Sight Gauge** .....Polyamide (Nylon)
- Springs –** Poppet & Control.....Steel

\* 1" Port Body with 1-1/2" Port Block.



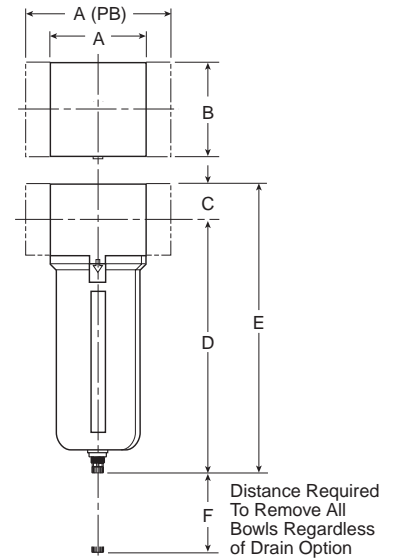
<b>C</b>	Product Selection
Filters	Coalescers
Regulators	Filter / Regulators
Lubricators	Compos
Accessories	

**P3NF Filters – Hi-Flow**



**Features**

- Port blocks (PB) available to provide 1-1/2" port extension to 1" ported bodies.
- Excellent water removal efficiency.
- Metal bowl with sight gauge.
- Large filter element surface guarantees low pressure drop and increased element life.
- Twist Drain as standard, optional automatic float drain.
- High Flow: 3/4" – 270 SCFM<sup>§</sup>  
 1" – 300 SCFM<sup>§</sup>  
 1-1/2" – 310 SCFM<sup>§</sup>



Port Size	NPT	
	Twist Drain	Automatic Float Drain
Metal Bowl / Sight Gauge		
3/4"	<b>P3NFA96GSM</b>	<b>P3NFA96GSA</b>
1"	<b>P3NFA98GSM</b>	<b>P3NFA98GSA</b>
1-1/2" #	<b>P3NFA9PGSM</b>	<b>P3NFA9PGSA</b>

P3NF Filter Dimensions		
<b>A</b> 3.62 (92)	<b>A (PB)</b> 5.91 (150)	<b>B</b> 3.62 (92)
<b>C</b> 1.38 (35)	<b>D†</b> 9.57 (243)	<b>E†</b> 10.95 (278)
<b>F</b> 4.92 (125)		

Standard part numbers shown bold. For other models refer to ordering information below.

# 1" Port Body with 1-1/2" Port Block.

§ SCFM = Standard cubic feet per minute at 90 psig inlet and 5 psig pressure drop, with 40 micron element.

Inches (mm)  
 † With Twist Drain or Automatic Float Drain

**Ordering Information**



Design Level

Port Type
1* G Thread (BSPP) Female
2 Rc Thread (BSPT) Female
<b>9 NPT Female</b>

\* 3/4 & 1 inch meet ISO 1179-1 Standard.

Port Size
<b>6 3/4" (w/o Port Blocks)</b>
<b>8 1" (w/o Port Blocks)</b>
<b>P 1-1/2" Port Blocks (w/ 1" Ported Body)</b>

Element
<u>w/o DPI Indicator</u>
A Adsorber
E 5 Micron
<b>G 40 Micron</b>
<u>w/ DPI Indicator</u>
B Adsorber
F 5 Micron
H 40 Micron

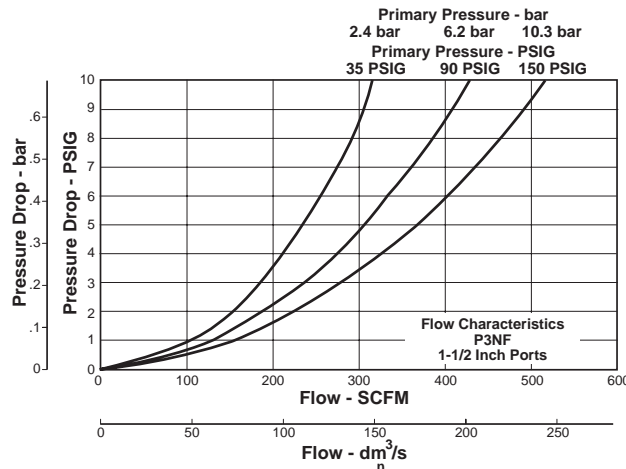
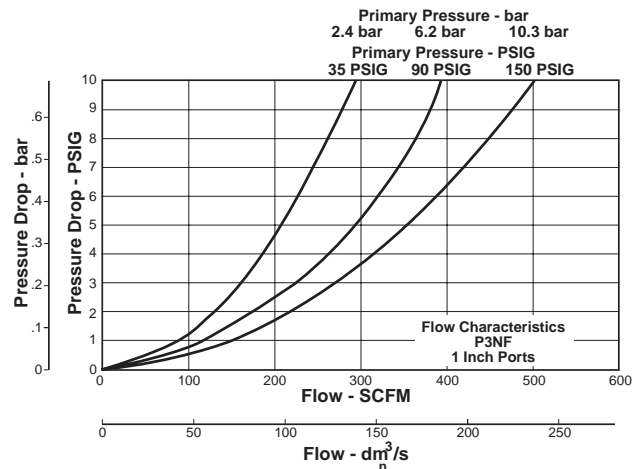
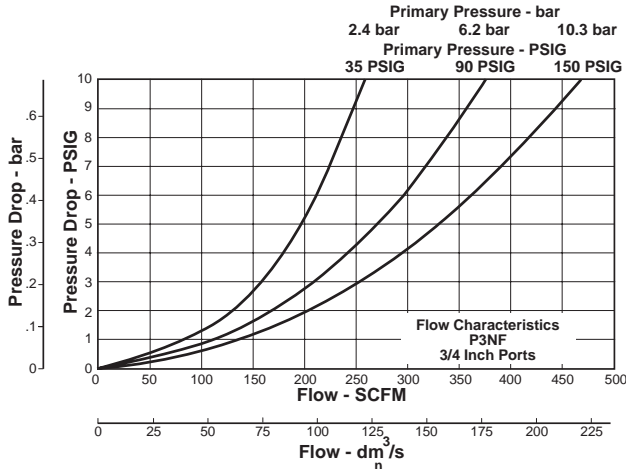
Bowl
<b>S Metal Bowl w/ Sight Gauge</b>

Drain
<b>M Twist Drain</b>
A Automatic Float Drain

**BOLD ITEMS ARE MOST POPULAR.**



**Technical Information**



**P3NF Filter Kits & Accessories**

- Bowl Kits –**  
 Metal Bowl –  
 Sight Gauge / Automatic Float Drain ..... P3NKA00BSA  
 Sight Gauge / Twist Drain ..... P3NKA00BSM  
 Sight Gauge / Push 'N' Drain ..... P3NKA00BSP
- Bowl Latch Kit ..... C11A33**
- DPI Replacement Kit ..... PS781P**
- Drain Kit –**  
 Automatic Float Drain ..... PS506P  
 Twist Drain ..... PS512P
- Filter Elements –**  
 40 Micron ..... P3NKA00ESG  
 5 Micron ..... P3NKA00ESE  
 Adsorber ..... P3NKA00ESA
- Mounting Bracket Kit\* ..... P3NKA00MW**
- Sight Gauge Kit ..... P3NKA00PE**

**Specifications**

- Pressure & Temperature Rating –**  
 0 to 250 psig (0 to 17 bar) 32°F to 175°F (0°C to 80°C)  
 Automatic Float Drain – 15 to 250 psig (1.0 to 17 bar)
- Bowl Capacity ..... 18.0 Ounces**
- Sump Capacity ..... 6.8 Ounces**
- Weight –**  
 3/4" ..... 3.5 lb. (1.6 kg)  
 1" ..... 3.5 lb. (1.6 kg)  
 1-1/2" # ..... 4.6 lb. (2.1 kg)

**Materials of Construction**

- Body ..... Aluminum**
- Deflector ..... Plastic**
- Drain ..... Plastic**
- Filter Elements –**  
 40 Micron (Standard) ..... Plastic  
 5 Micron (Optional) ..... Plastic  
 Adsorber (Optional) ..... Activated Charcoal
- Seals ..... Nitrile**
- Sight Gauge ..... Polyamide (Nylon)**

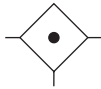
\* If 1-1/2 BSPP E02 fittings are required, use P3NKA00BMW.

# 1" Port Body with 1-1/2" Port Block.



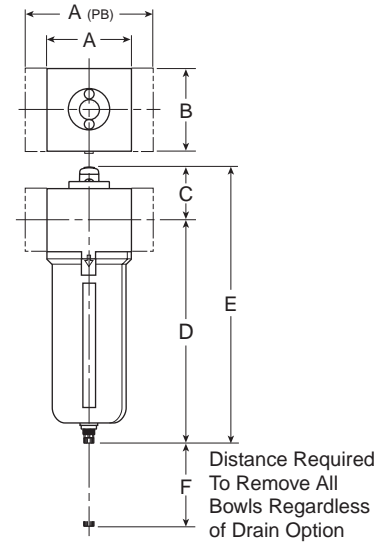
C
Product Selector
Filters
Coalescers
Regulators
Filter / Regulators
Lubricators
Combos
Accessories

## P3NF Coalescing Filters – Hi-Flow



### Features

- Port blocks (PB) available to provide 1-1/2" port extension to 1" ported bodies.
- Metal bowl with sight gauge.
- Large filter element surface guarantees low pressure drop and increased element life.
- Twist Drain as standard, optional automatic float drain.
- High Flow: Grade 6 Element
  - 3/4" – 130 SCFM<sup>§</sup>
  - 1" – 140 SCFM<sup>§</sup>
  - 1-1/2"<sup>†</sup> – 150 SCFM<sup>§</sup>
- Grade 10 Element
  - 3/4" – 195 SCFM<sup>§</sup>
  - 1" – 215 SCFM<sup>§</sup>
  - 1-1/2"<sup>†</sup> – 225 SCFM<sup>§</sup>



Port Size	NPT	
	Twist Drain	Automatic Float Drain
Metal Bowl / Sight Gauge		
3/4"	<b>P3NFA96DSM</b>	<b>P3NFA96DSA</b>
1"	<b>P3NFA98DSM</b>	<b>P3NFA98DSA</b>
1-1/2" <sup>†</sup>	<b>P3NFA9PDSM</b>	<b>P3NFA9PDSA</b>

P3NF Coalescing Filter Dimensions		
<b>A</b> 3.62 (92)	<b>A (PB)</b> 5.91 (150)	<b>B</b> 3.62 (92)
<b>C</b> 2.30 (58.5)	<b>D †</b> 9.57 (243)	<b>E †</b> 11.90 (302)
<b>F</b> 4.92 (125)		

Standard part numbers shown bold for Grade 6 Elements (for Grade 10 Elements, replace "D" with "Q" in the 8th position). For other models refer to ordering information below.

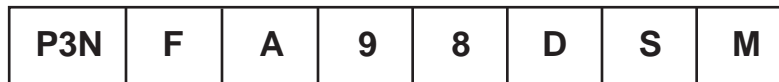
<sup>†</sup> 1" Port Body with 1-1/2" Port Block.

<sup>§</sup> SCFM = Standard cubic feet per minute at 90 psig inlet and 5 psig pressure drop.

Inches (mm)

<sup>†</sup> With Twist Drain or Automatic Float Drain

### Ordering Information



Design Level

Port Type
1* G Thread (BSPP) Female
2 Rc Thread (BSPT) Female
<b>9 NPT Female</b>

\* 3/4 & 1 inch meet ISO 1179-1 Standard.

Port Size
<b>6 3/4" (w/o Port Blocks)</b>
<b>8 1" (w/o Port Blocks)</b>
<b>P 1-1/2" Port Blocks (w/ 1" Ported Body)</b>

Element
w/ DPI Indicator
<b>D Grade 6</b>
Q Grade 10

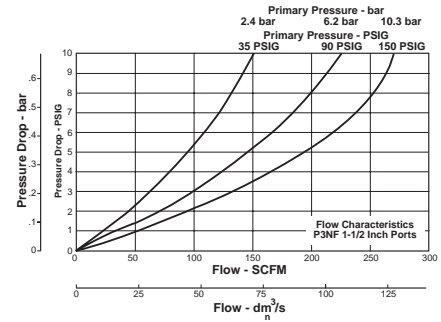
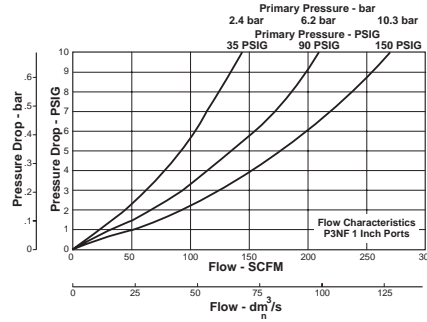
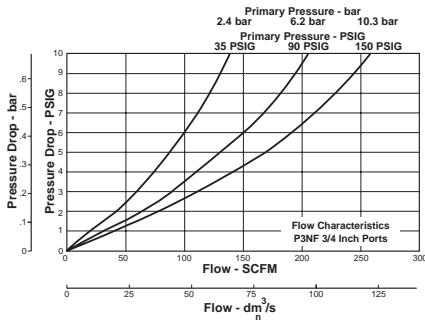
Bowl
<b>S Metal Bowl w/ Sight Gauge</b>

Drain
<b>M Twist Drain</b>
A Automatic Float Drain

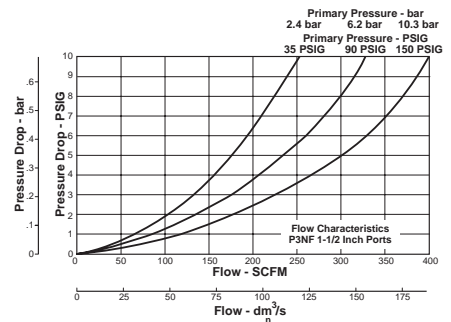
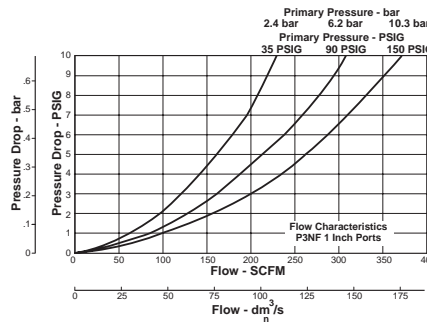
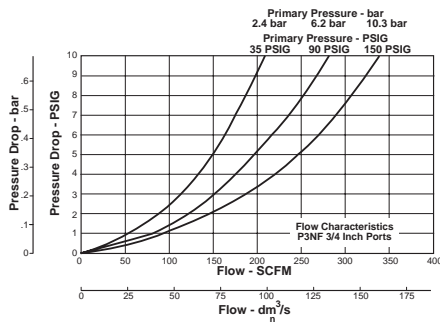
**BOLD ITEMS ARE MOST POPULAR.**

**Technical Information**

**Grade 6**



**Grade 10**



**P3NF Coalescing Filter Kits & Accessories**

**Bowl Kits –**

Metal Bowl –

- Sight Gauge / Automatic Float Drain ..... P3NKA00BSA
- Sight Gauge / Twist Drain ..... P3NKA00BSM
- Sight Gauge / Push 'N' Drain ..... P3NKA00BSP

**Bowl Latch Kit** ..... C11A33

**DPI Replacement Kit** ..... PS781P

**Drain Kit –**

- Automatic Float Drain ..... PS506P
- Semi-Auto Drain ..... PS511P
- Twist Drain ..... PS512P
- Push 'N' Drain ..... PS513P

**Filter Elements –** Grade 6 (Standard) ..... P3NKA00ESCB  
 Grade 10 (Optional) ..... P3NKA00ES9

**Sight Gauge Kit** ..... P3NKA00PE

**Mounting Bracket Kit\*** ..... P3NKA00MW

\* If 1-1/2 BSPP E02 fittings are required, use P3NKA00BMW.

**Specifications**

**Bowl Capacity** ..... 18.0 Ounces

**Sump Capacity** ..... 6.8 Ounces

**Filter Element –**

- Borosilicate & felt glass fibers 99.97% DOP efficiency
- Largest Aerosol Particle Passed (Grade 6) ..... 0.01 Micron
- Largest Solid Particle Passed (Grade 6) ..... 0.30 Micron

**Pressure & Temperature Rating –** ..... 0 to 250 psig (0 to 17.2 bar)  
 32°F to 175°F (0°C to 80°C)

Automatic Float Drain – 15 to 250 psig (1.0 to 17.2 bar)

**Materials of Construction**

**Body & Bowl** ..... Aluminum

**Deflector** ..... Plastic

**Drain** ..... Plastic

**Seals** ..... Nitrile

**Sight Gauge** ..... Polyamide (Nylon)

**Weight –** 3/4" ..... 3.5 lb. (1.6 kg)

1" ..... 3.5 lb. (1.6 kg)

1-1/2" † ..... 4.6 lb. (2.1 kg)

† 1" Port Body with 1-1/2" Port Block.



Product Selection

Filters

Coalescers

Regulators

Filter / Regulators

Lubricators

Combos

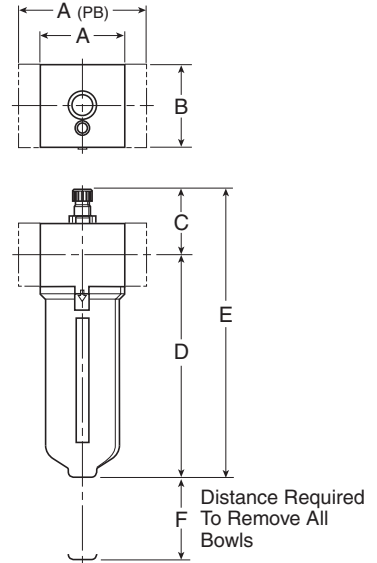
Accessories

**P3NL Mist Lubricators – Hi-Flow**



**Features**

- Port blocks (PB) available to provide 1-1/2" port extension to 1" ported bodies.
- Proportional oil delivery over a wide range of air flows.
- Bowl can be filled while air line is under pressure.
- Transparent sight dome for 360° visibility.
- High Flow: 3/4" – 240 SCFM<sup>§</sup>  
 1" – 250 SCFM<sup>§</sup>  
 1-1/2" – 260 SCFM<sup>§</sup>



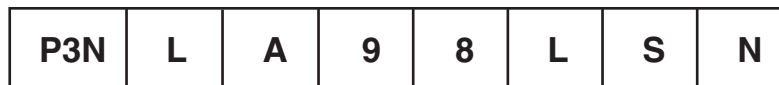
Port Size	NPT
	No Drain
	Metal Bowl / Sight Gauge
3/4"	<b>P3NLA96LSN</b>
1"	<b>P3NLA98LSN</b>
1-1/2" #	<b>P3NLA9PLSN</b>

P3NL Lubricator Dimensions		
A	A <sub>PB</sub>	B
3.62 (92)	5.91 (150)	3.62 (92)
C	D	E
2.81 (71)	9.00 (229)	11.81 (300)
F		
4.92 (125)		

Standard part numbers shown bold. For other models refer to ordering information below  
 # 1" Port Body with 1-1/2" Port Block.  
 § SCFM = Standard cubic feet per minute at 90 psig inlet and 5 psig pressure drop.

Inches (mm)

**Ordering Information**

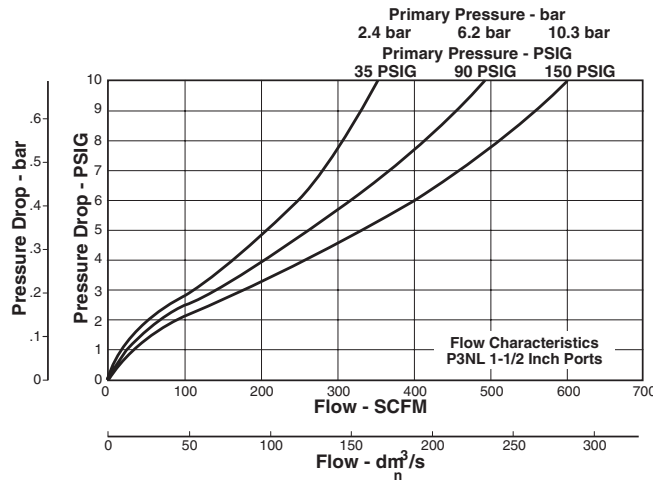
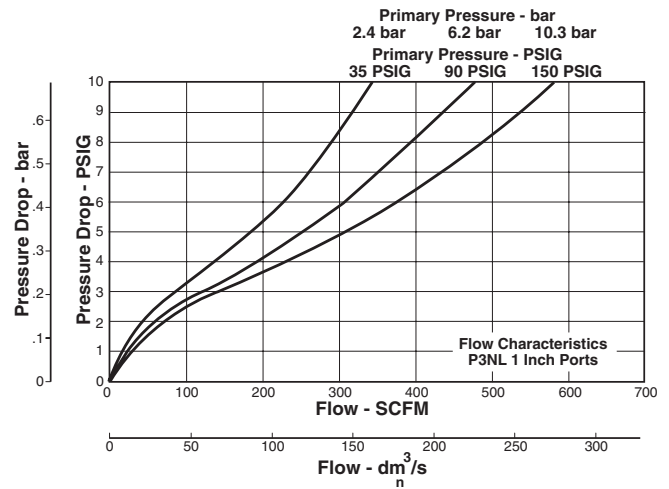
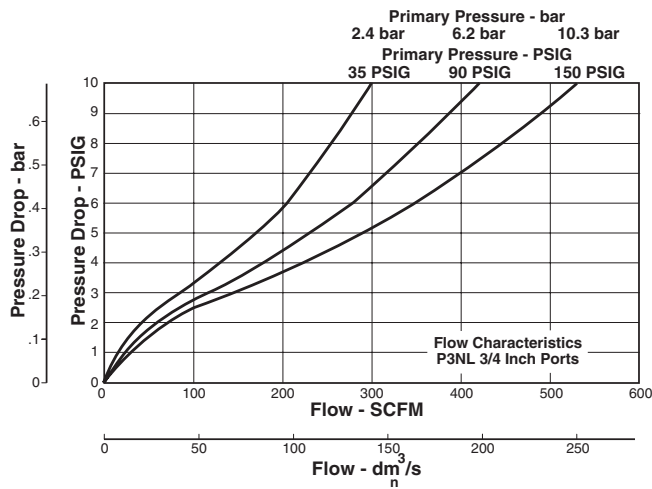


<b>Design Level</b>	<b>Port Type</b> 1* G Thread (BSPP) Female 2 Rc Thread (BSPT) Female <b>9 NPT Female</b> <small>* 3/4 &amp; 1 inch meet ISO 1179-1 Standard.</small>	<b>Port Size</b> <b>6 3/4" (w/o Port Blocks)</b> <b>8 1" (w/o Port Blocks)</b> <b>P 1-1/2" Port Blocks (w/ 1" Ported Body)</b>	<b>Type</b> <b>Oil Mist</b> <b>L w/ Polycarbonate Sight Dome</b> A w/ Nylon Sight Dome	<b>Bowl</b> <b>S Metal Bowl w/ Sight Gauge</b>	<b>Drain / Fill Device</b> A Auto Fill / Fill Plug <b>N No Drain, Solid Bowl / Fill Plug</b> M Twist Drain / Fill Plug H No Drain / Body Pressure Fill J Twist Drain / Body Pressure Fill
---------------------	--	---	---	---	--

**BOLD ITEMS ARE MOST POPULAR.**



**Technical Information**



**P3NL Lubricator Kits & Accessories**

- Adjustment Knob ..... P04121
- Bowl Kits –
  - Metal Bowl – Sight Gauge / Twist Drain..... P3NKA00BSM
  - Metal Bowl – Sight Gauge / No Drain ..... P3NKA00BSN
- Bowl Latch Kit .....C11A33
- Drain Kit – Twist Drain ..... PS512P
- Fill Cap Kit ..... P3NKA00PL
- Sight Dome Kit – Polycarbonate ..... PS740P
- Nylon..... PS740N
- Sight Gauge Kit ..... P3NKA00PE
- Pressure Fill Adapter Kit ..... P3NKA00PK
- Service Kit ..... P3NKA00RL
- Mounting Bracket Kit\* ..... P3NKA00MW
- Oil – 1 Gal. .... F442002
- 12 Quart Case..... F442003
- 4 Gallon Case..... F442005

\* If 1-1/2 BSPP E02 fittings are required, use P3NKA0BMW.

**Specifications**

- Bowl Capacity ..... 18.0 Ounces
- Minimum Flow for Lubrication ..... 6.6 SCFM at 100 psig
- Pressure & Temperature Rating ..... 0 to 250 psig (0 to 17.2 bar)  
 32°F to 175°F (0°C to 80°C)
- Suggested Lubricant ..... F442 Oil  
 Petroleum based oil of 100 to 200 SSU viscosity at 100°F (38°C)  
 and an aniline point greater than 200°F (93°C).  
 (DO NOT USE OILS WITH ADDITIVES, COMPOUNDED OILS  
 CONTAINING SOLVENTS, GRAPHITE, DETERGENTS, OR  
 SYNTHETIC OILS.)
- Weight – 3/4 Inch ..... 3.5 lb. (1.6 kg)
- 1 Inch ..... 3.5 lb. (1.6 kg)
- 1-1/2 Inch† ..... 4.6 lb. (2.1 kg)

**Materials of Construction**

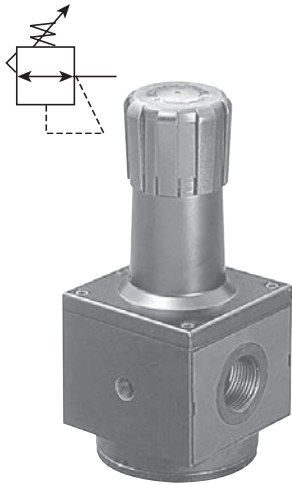
- Body, Bowl ..... Aluminum
- Drains: Twist Drain (Optional) ..... Plastic
- Injector Meter Block & Base Assembly ..... Plastic
- Seals ..... Nitrile
- Sight Dome ..... Polycarbonate
- Sight Gauge ..... Polyamide (Nylon)

† 1" Port Body with 1-1/2" Port Block.



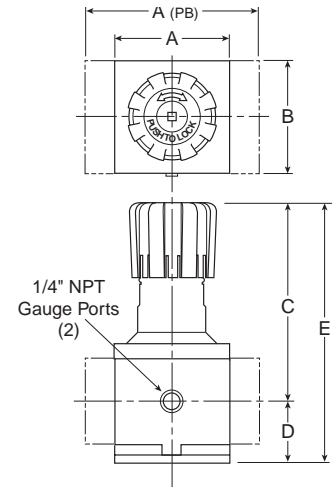
<b>C</b>	Product Selection
Filters	Coalescers
Regulators	Filter / Regulators
Lubricators	Compos
Accessories	

## P3NR Regulators – Hi-Flow



### Features

- Port blocks (PB) available to provide 1-1/2" port extension to 1" ported bodies.
- Self relieving feature plus balanced poppet provides quick response and accurate pressure regulation.
- Solid control piston for extended life.
- High Flow: 3/4" – 200 SCFM<sup>§</sup>  
 1" – 300 SCFM<sup>§</sup>  
 1-1/2" – 300 SCFM<sup>§</sup>



Port Size	NPT
Without Gauge	
3/4"	<b>P3NRA96BNN</b>
1"	<b>P3NRA98BNN</b>
1-1/2"	<b>P3NRA9PBNN</b>
With 160 PSI Gauge	
3/4"	<b>P3NRA96BNG</b>
1"	<b>P3NRA98BNG</b>
1-1/2"	<b>P3NRA9PBNG</b>

P3NR Regulator Dimensions		
A	A <sup>(PB)</sup>	B
3.62 (92)	5.91 (150)	3.62 (92)
C	D	E
6.38 (162)	2.08 (53)	8.46 (215)

Inches (mm)

Standard part numbers shown bold. For other models refer to ordering information below.

NOTE: 2.00 Dia. (51mm) hole required for panel mounting.

§ SCFM = Standard cubic feet per minute at 100 psig inlet, 90 psig no flow secondary setting and 10 psig pressure drop.

### ⚠ WARNING

**Product rupture can cause serious injury.  
 Do not connect regulator to bottled gas.  
 Do not exceed maximum primary pressure rating.**

## Ordering Information



Design Level

Port Type
1* G Thread (BSPP) Female
2 Rc Thread (BSPT) Female
<b>9 NPT Female</b>

\* 3/4 & 1 inch meet ISO 1179-1 Standard.

Port Size
<b>6 3/4" (w/o Port Blocks)</b>
<b>8 1" (w/o Port Blocks)</b>
<b>P 1-1/2" Port Blocks (w/ 1" Ported Body)</b>

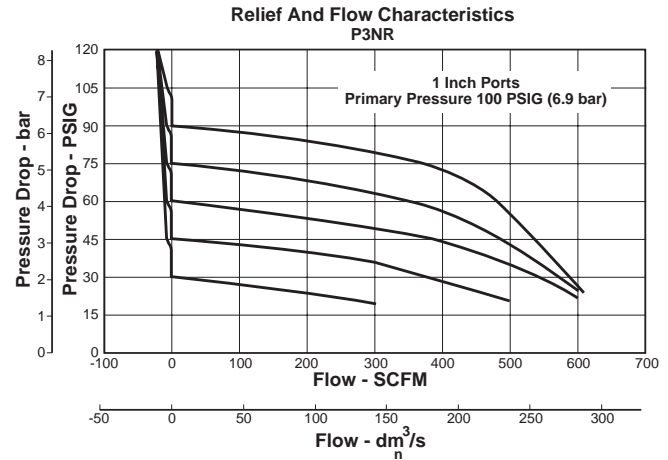
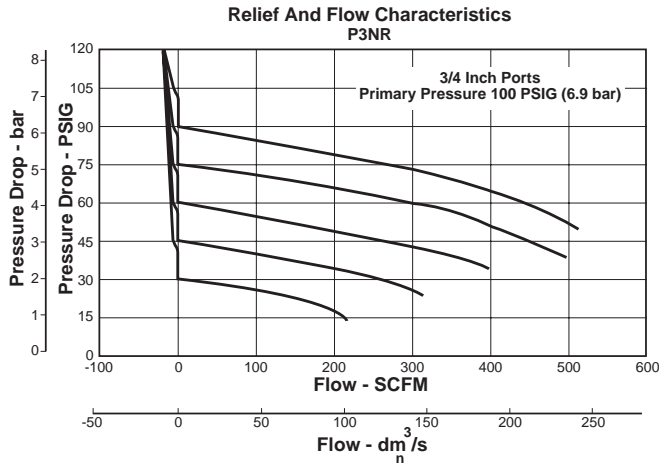
Relief
<b>B Relieving</b>
<b>N Non-Relieving</b>

Adjustment
<b>N Non-Rising Knob</b>

Pressure Gauge
Without Gauge
L 60 PSI (0 to 4 bar)
<b>N 125 PSI (0 to 8 bar)</b>
H 250 PSI (0 to 17 bar)
With Gauge
M 60 PSI (0 to 4 bar)
<b>G 125 PSI (0 to 8 bar)</b>
J 250 PSI (0 to 17 bar)

**BOLD ITEMS ARE MOST POPULAR.**

**Technical Information**

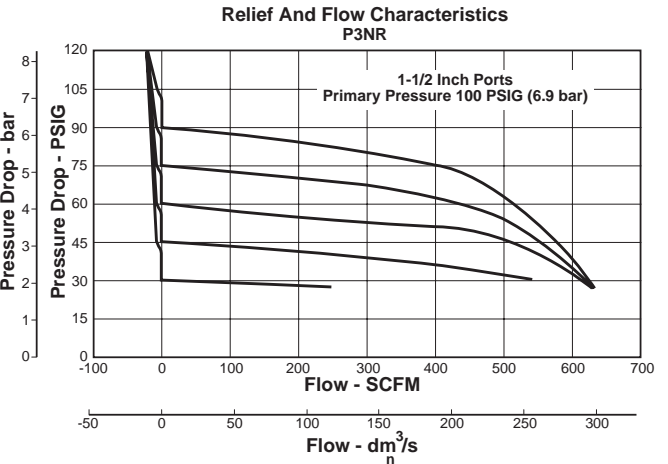


**CAUTION:**

**REGULATOR PRESSURE ADJUSTMENT –**

The working range of knob adjustment is designed to permit outlet pressures within their full range. Pressure adjustment beyond this range is also possible because the knob is not a limiting device. This is a common characteristic of most industrial regulators, and limiting devices may be obtained only by special design.

For best performance, regulated pressure should always be set by increasing the pressure up to the desired setting.



**P3NR Regulator Kits & Accessories**

<b>Control Knob</b> .....	P3NKA00PN
<b>Gauges</b> – 60 psig (0 to 4.1 bar) .....	K4520N14060
160 psig (0 to 11.0 bar).....	K4520N14160
300 psig (0 to 20.0 bar).....	K4520N14300
<b>Mounting Bracket Kit*</b> .....	P3NKA00MW
<b>Service Kit</b> – Relieving.....	P3NKA00RR
Non-Relieving.....	P3NKA00RN
<b>Springs</b> – 1-60 psig Range .....	C10A1304
2-125 psig Range.....	C10A1308
5-250 psig Range .....	C10A1317

**Specifications**

<b>Gauge Ports (2)</b> .....	1/4 Inch
(Can be used as additional High Flow 1/4 Inch Outlet Ports)	
<b>Port Threads</b> .....	3/4, 1, 1-1/2 Inch
<b>Primary Pressure Rating –</b>	
Maximum Primary Pressure .....	250 psig (17.2 bar)
<b>Temperature Rating</b> .....	32°F to 175°F (0°C to 80°C)
<b>Weight</b> – 3/4" .....	4.2 lb. (1.9 kg)
1" .....	4.2 lb. (1.9 kg)
1-1/2" † .....	5.3 lb. (2.4 kg)

**Materials of Construction**

<b>Adjusting Stem</b> .....	Steel
<b>Body</b> .....	Aluminum
<b>Bonnet</b> .....	Aluminum
<b>Knob</b> .....	Plastic
<b>Piston</b> .....	Plastic
<b>Poppet Assembly</b> .....	Brass
<b>Seals</b> .....	Nitrile
<b>Springs</b> – Poppet & Control.....	Steel

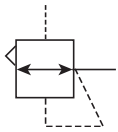
\* If 1-1/2 BSPP E02 fittings are required, use P3NKA0BMW.

† 1" Port Body with 1-1/2" Port Block.



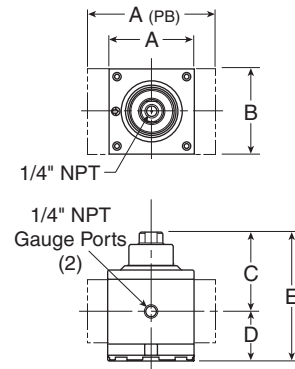
<b>C</b>
Product Selection
Filters
Coalescers
Regulators
Filter / Regulators
Lubricators
Combos
Accessories

## P3NR Pilot Controlled Regulator - Hi-Flow



### Features

- Port blocks (PB) available to provide 1-1/2" port extension to 1" ported bodies.
- Self relieving feature plus balanced poppet provides quick response and accurate pressure regulation.
- Solid control piston for extended life.
- High Flow: 3/4" – 300 SCFM<sup>§</sup>  
 1" – 300 SCFM<sup>§</sup>  
 1-1/2" – 350 SCFM<sup>§</sup>



Port Size	NPT
Without Gauge	
3/4"	<b>P3NRA96BPP</b>
1"	<b>P3NRA98BPP</b>
1-1/2" #	<b>P3NRA9PBPP</b>
With 160 PSI Gauge	
3/4"	<b>P3NRA96BPG</b>
1"	<b>P3NRA98BPG</b>
1-1/2" #	<b>P3NRA9PBPG</b>

A	A <sup>(PB)</sup>	B
3.62 (92)	5.91 (150)	3.62 (92)
C	D	E
3.38 (86)	2.08 (53)	5.46 (139)

Inches (mm)

Standard part numbers shown bold. For other models refer to ordering information below.

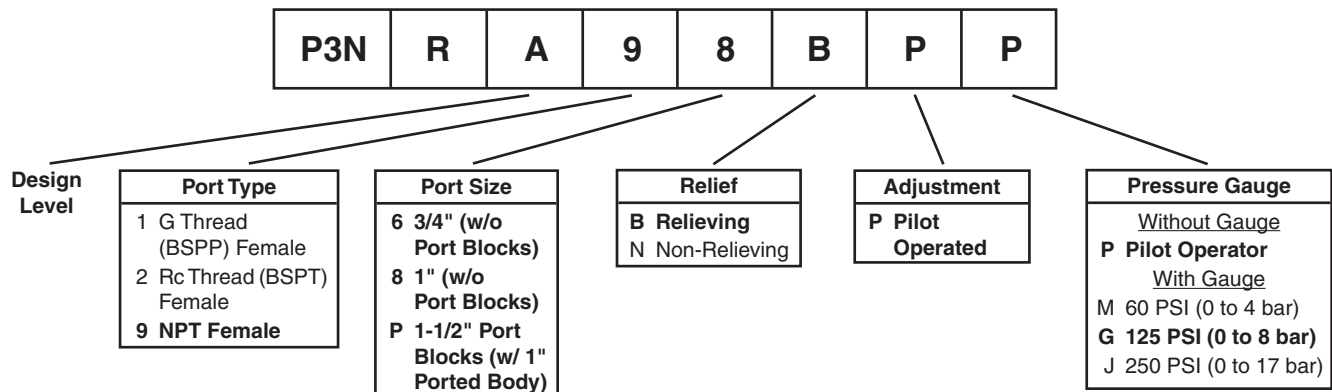
# 1" Port Body with 1-1/2" Port Block.

§ SCFM = Standard cubic feet per minute at 100 psig inlet, 90 psig setting and 10 psig pressure drop.

**⚠ WARNING**

**Product rupture can cause serious injury.  
 Do not connect regulator to bottled gas.  
 Do not exceed maximum primary pressure rating.**

### Ordering Information

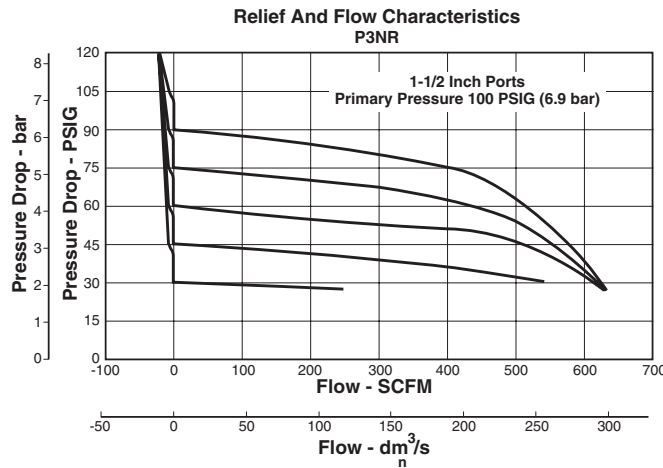
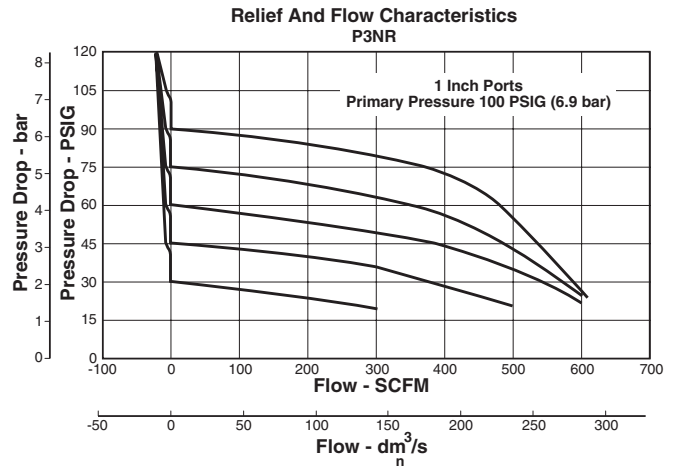
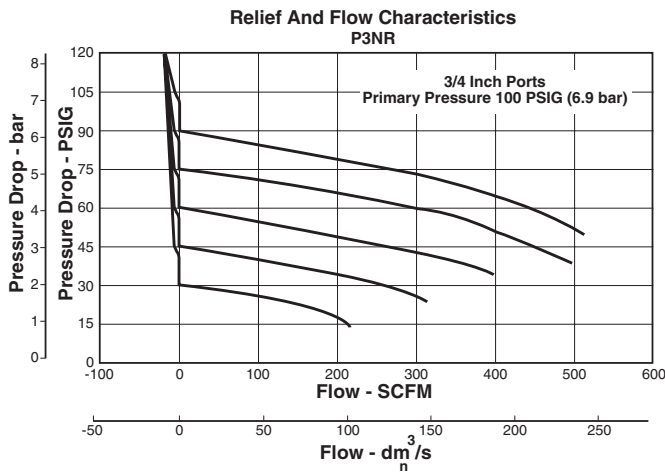


**BOLD ITEMS ARE MOST POPULAR.**





**Technical Information**



**P3NR Pilot Regulator Kits & Accessories**

- Gauges – 60 psig (0 to 4.1 bar) ..... K4520N14060
- 160 psig (0 to 11.0 bar)..... K4520N14160
- 300 psig (0 to 20.0 bar)..... K4520N14300
- Mounting Bracket Kit\* ..... P3NKA00MW
- Service Kit – Relieving..... P3NKA00PD

**Specifications**

- Gauge Ports (2) ..... 1/4 Inch
- Port Threads ..... 3/4, 1, 1-1/2 Inch
- Primary Pressure Rating –  
 Maximum Primary Pressure ..... 250 psig (17.2 bar) Max.
- Temperature Rating ..... 32°F to 175°F (0°C to 80°C)
- Weight – 3/4" ..... 3.3 lb. (1.5 kg)
- 1" ..... 3.3 lb. (1.5 kg)
- 1-1/2" † ..... 4.4 lb. (2.0 kg)

**Materials of Construction**

- Adjusting Stem ..... Steel
- Body ..... Aluminum
- Bonnet ..... Aluminum
- Piston ..... Plastic
- Poppet Assembly ..... Brass
- Seals ..... Nitrile
- Springs – Poppet ..... Steel

\* If 1-1/2 BSPP E02 fittings are required, use P3NKA0BMW.

† 1" Port Body with 1-1/2" Port Block.



C
Product Selection
Filters
Coalescers
Regulators
Filter / Regulators
Lubricators
Combos
Accessories