



15mm Solenoid Valve

Manifold and Subbase

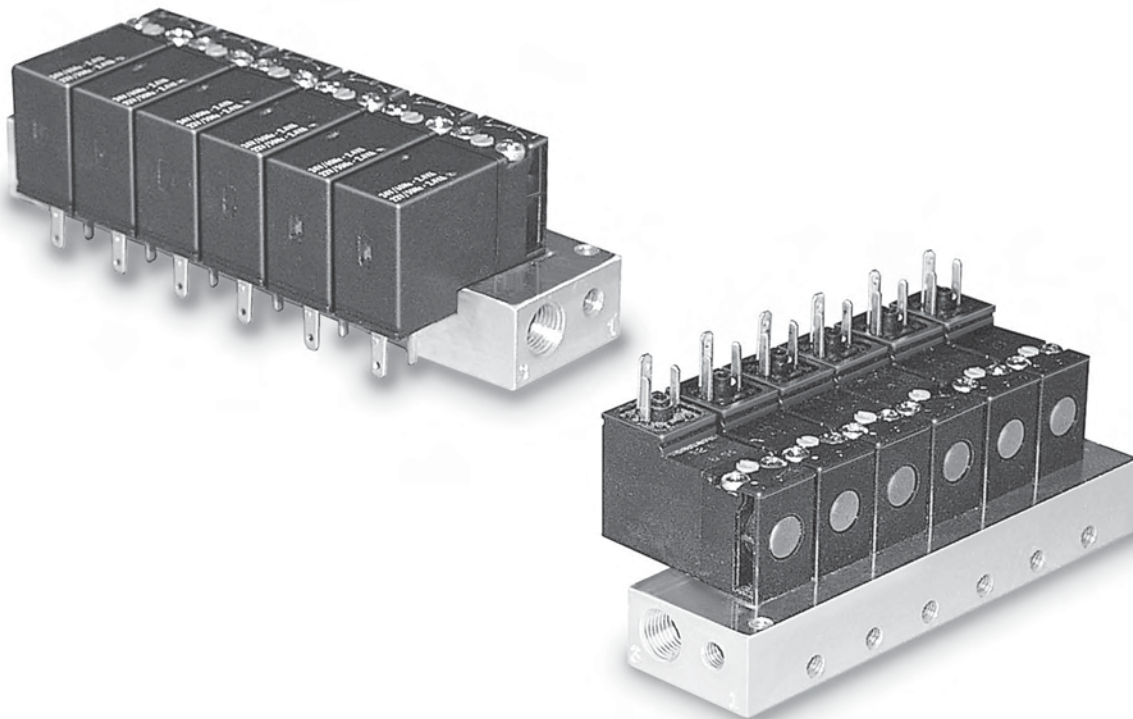
B

XM

15mm
Solenoid

Section B

www.parker.com/pneu/15mm



Features	B16
Model Selection	
Manifolds	B17
Subbase	B18
Solenoid Kits	B19
Electrical Connectors	B20

BOLD ITEMS ARE MOST POPULAR.



B15

www.comoso.com

Parker Hannifin Corporation
Pneumatic Division
Richland, Michigan
www.parker.com/pneumatics

B

XM

15mm
Solenoid

Features

- Compact and Simple Design
- Utilizes 15mm Solenoid Operators
- Manifold Allows Mounting of Normally Open and Normally Closed Operators Simultaneously
- Up to 20 Stations Available

Specifications

Operating Pressure:

Vacuum to 145 PSIG
(Vacuum to 10 bar)

Operating Temperature:

5° to 140°F
(-15° to 60°C)

Materials:

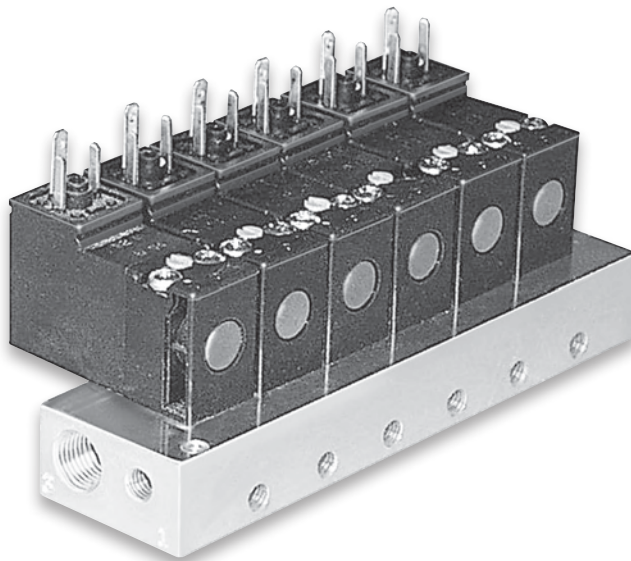
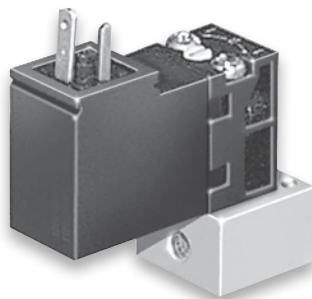
Manifold: Aluminum
Solenoid: Glass Filled Polyamide

Solenoids:

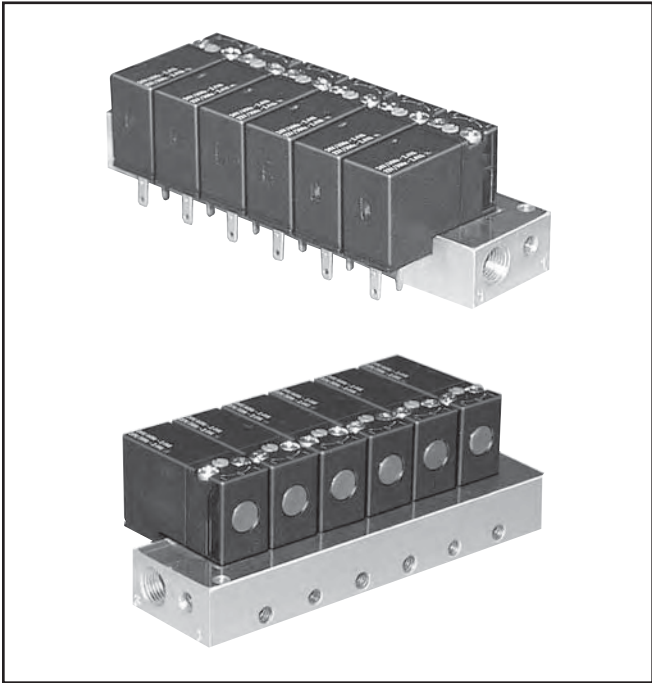
- 15mm Low Watt Solenoids are UL Certified and Approved to be CE Marked
- Wide Range of Voltages Available

Applications

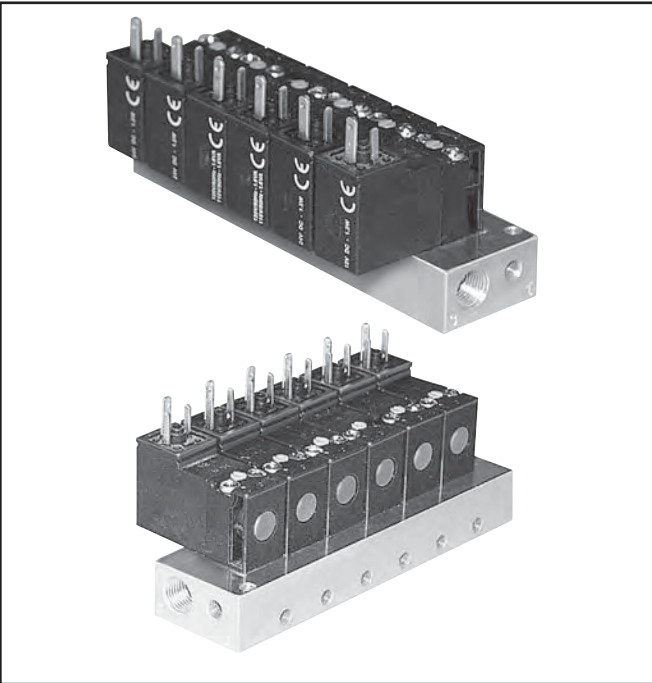
- Piloting for Process Control Valves
 - Pharmaceutical Equipment
 - Waste Water Treatment Systems
 - Food Processing
 - Chemical Batching
- Industrial Laundry Equipment
- Paint Spray & Dyeing Equipment
- Textile Winding Applications
- Vacuum and Conveyor Applications



Manifold - Pins Down



Manifold - Pins Up



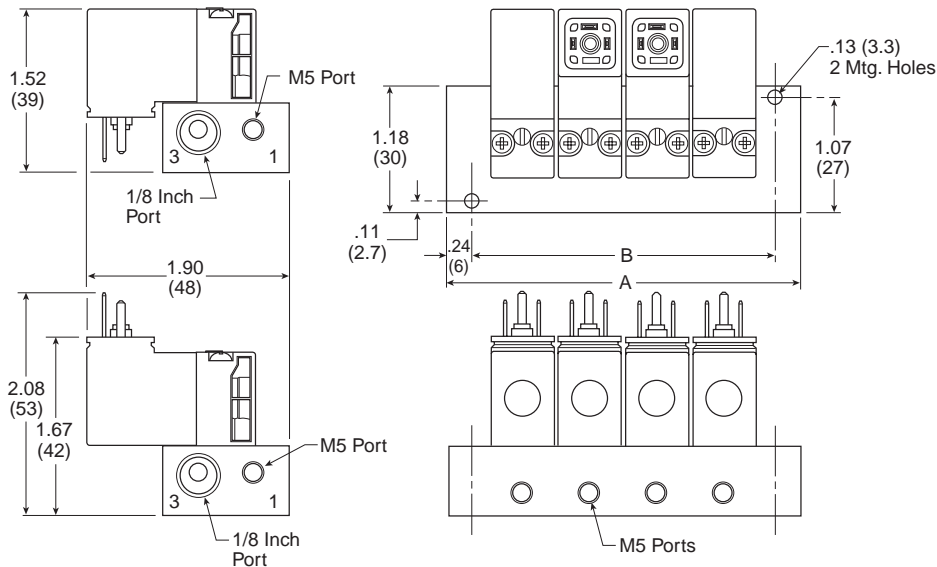
B

XM

15mm Solenoid

Manifold Dimensions

Special mounting considerations must be made for connector assembly clearance when mounting solenoid valves with pins down.

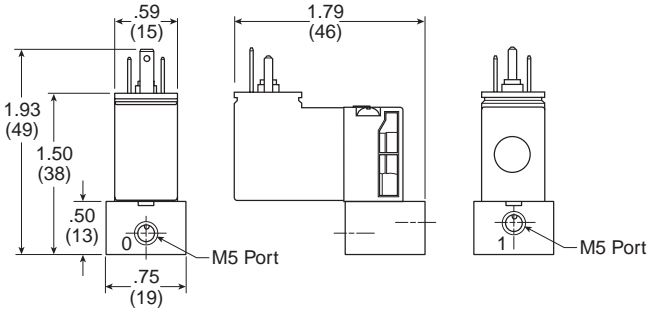
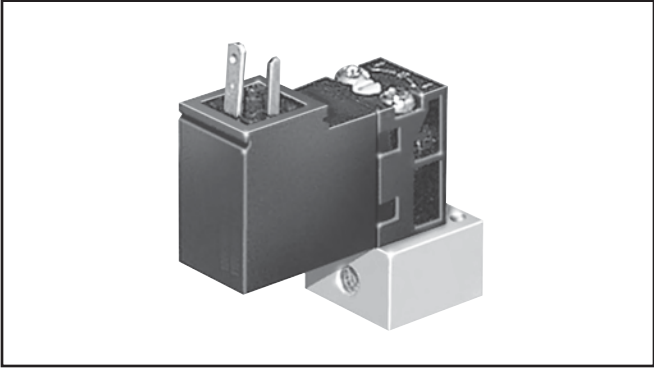


Number of Stations	Dim. A	Dim.B
2	2.04 (52)	1.57 (40)
3	2.68 (68)	2.20 (56)
4	3.31 (84)	2.83 (72)
5	3.94 (100)	3.46 (88)
6	4.57 (116)	4.09 (104)
7	5.20 (132)	4.72 (120)
8	5.83 (148)	5.35 (136)
9	6.46 (164)	5.98 (152)
10	7.09 (180)	6.61 (168)
11	7.72 (196)	7.24 (184)
12	8.35 (212)	7.87 (200)
13	8.98 (228)	8.50 (216)
14	9.61 (244)	9.13 (232)
15	10.23 (260)	9.76 (248)
16	10.87 (276)	10.39 (264)
17	11.50 (292)	11.02 (280)
18	12.13 (308)	11.65 (296)
19	12.76 (324)	12.28 (312)
20	13.39 (340)	12.91 (328)

Subbase

Subbase Dimensions

Pins up only.



Model Number Index

PSFTN0N02NP

Basic Series	
Subbase 3/2 Bottom Port	PSE
Subbase 3/2 End Port	PSF

Manifold Type	
15mm Solenoid Valve Manifold (Machined to accept NC / NO on Same Bar)	S
15mm Solenoid Valve Manifold (Machined to accept All NC or All NO)	T
15mm Solenoid Valve Subbase	R

* Pins Up Only.
** End Ported Only.

Pilot Source	
Direct	N

Cylinder Port Size	
M5	0

Options	
N**	Standard - Cylinder Port on Non-Electrical Side (Port 1 Side)
E*	Cylinder Port on Electrical Side (Port 3 Side)

* N/A with Valve Series "S"
* N/A with Manifold "PSE"
** Use for Bottom Ported Manifold Type

Number of Stations	
02	2 Stations
03	3 Stations
20	20 Stations
XX	Single*

* Use for "R" Manifold Type Only

Port Type	
0*	M5
N**	NPT

* Use for Valve Manifold R Only - Single Subbase
** Use for Valve Manifold S & T Only - Manifold

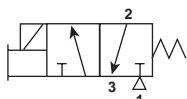
Brand Label
P Parker

BOLD ITEMS ARE MOST POPULAR.

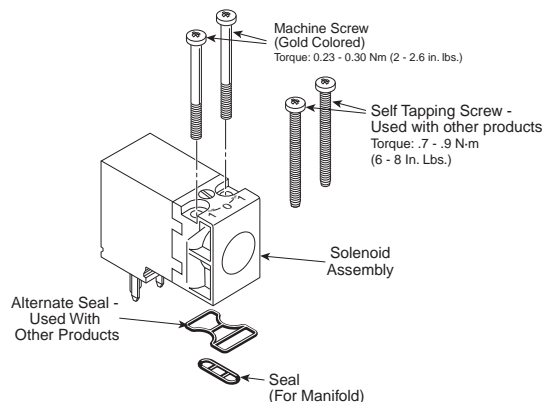
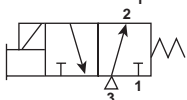
Examples:
PSFTN0N16EP - End Port Manifold - Cyl Ports and Electrical on Same Side
PSESN0N10NP - Bottom Port Manifold - N/C and N/O can be Interchanged
PSFTN0N10NP - End Port Manifold - Cyl Ports and Electrical are Opposite

15mm Solenoid Kit Information

**3/2 Normally Non-passing (NNP) /
Normally Closed (NC) Valves**



**3/2 Normally Passing (NP) /
Normally Open (NO) Valves**



NC (NNP) Solenoids / Kits

Kit No.	* Override	## Voltage (S = Standard, O = Optional, — = N/A)				
		42 (24VAC)	45 (12VDC)	49 (24VDC)	53 (120VAC)	57 (230VAC)
PS2982*##P Pins: UP NC / NNP 1.2W / 1.6VA	B (Non-lock, Flush)	O	O	S	S	O
	C (Lock, Flush)	O	O	S	S	O
	D (Non-lock, Ext)	—	—	O	O	—
PS3541*##P Pins: DOWN NC / NNP 1.8W / 2.4VA	B (Non-lock, Flush)	O	O	S	S	—
	C (Lock, Flush)	O	O	S	S	—
	D (Non-lock, Ext)	—	—	O	O	—
	E (Lock, Ext)	—	—	O	O	—
PS3441*##P Pins: DOWN NC / NNP 1.2W / 1.6VA	B (Non-lock, Flush)	O	O	O	O	O
	C (Lock, Flush)	O	O	O	O	O
PS3202*##P Pins: UP NO / NP 1.2W / 1.6VA	B (Non-lock, Flush)	O	O	S	S	—

* Override

Voltage

BOLD ITEMS ARE MOST POPULAR.

Technical Data

Electrical Interface Per:

Din 43650 Form C (EN175301-803C)

Pneumatic Interface Per:

Afnor E 0652 110 N

Protection:

IP65 (Washdown)

Air Flow:

Standard Flow 0.033 Cv (33 Lpm) (1.2W) (1.6VA)

High Flow 0.05 Cv (50 Lpm) (1.8W) (2.4VA)

Operating Temperature:

Standard Flow: 5°F to 140°F (-15°C to 60°C)

High Flow: 5°F to 122°F (-15°C to 50°C)

Mobile Applications (47 & 48 Voltage Options):

-40°F to 158°F (-40°C to 70°C)

Operating Pressure:

Vacuum to 145 PSIG (Vacuum to 10 bar)

Storage Temperature:

All Applications: -40°F to 158°F (-40°C to 70°C)

Voltage Tolerance:

All Voltages Except 47 & 48: Rated Voltage +10% / -15%

Options 47 & 48: Rated Voltage +25% / -30%

Materials

Valve:

Body: Glass Filled Polyamide

Internal Metal Parts: Steel

Screws: Steel

Bottom Plug: Thermoplastic

Poppet Seals: Nitrile for Standard, Fluorocarbon for Mobile

Female Electrical Connectors

15mm 3-Pin DIN 43650C
(Use with Enclosure “5”)

B

XM

15mm
Solenoid

Connector	Connector with Cord	Description
PS2932BP	PS2932HBP 18 Inches	Unlighted
PS2932BP	PS2932JBP 6 Feet	Unlighted
PS294675BP	PS2946J75BP* 6 Feet	Light – 12VAC or DC
PS294679BP	PS2946J79BP* 6 Feet	Light – 24VAC or DC
PS294683BP	PS2946J83BP* 6 Feet	Light – 110/120VAC
PS294687BP	N/A	Light – 240/230VAC

* LED with surge suppression.

Note: Max ø6.5mm cable size required for connector w/o 6' (2m) cord.
IP65 rated when properly installed.

Engineering Data:

Conductors: 2 Poles Plus Ground
Cable Range (Connector Only): 4 to 6mm (0.16 to 0.24 Inch)
Contact Spacing: 8mm

