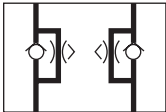


Dual Flow Control

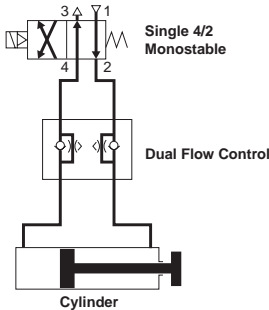
By controlling the exhaust flows of a double-acting cylinder, this module can adjust both speeds — extend and retract. It may be plugged into the valve module output ports or mounted close to the cylinder in its in-line version.



P2M1PXFA

Application

On a double-acting cylinder, extend and retract speeds are adjusted separately by control of air flow exhaust. The control becomes more precise when the flow adjustment is close to the cylinder. The examples show different solutions which are dependent upon the valve-to-cylinder distance and accessibility to the cylinder



Dual Flow Control Size 1

Description	Size 1
Dual Flow Control Module	P2M1PXFA Weight 1.06 oz

Dual Flow Control Size 2

Description	Size 2
Dual Flow Control Module	P2M2PXFA Weight 1.59 oz



Pneumatic Connectors for Size 1 Dual P.O. Check Valves

		Elbow Version		Straight Version	
		Weight (oz)	Order Code	Weight (oz)	Order Code
Tube Push-in Connector	5/32" = 4mm OD	0.18	CMD04-1	0.07	FMD04-1
	6mm OD	0.18	CMD06-1	0.11	FMD06-1
	1/4" OD	0.18	CMD07-1B	0.11	FMD07-1B
Double Male Union (For Peripheral Valve Modules)	—	—	—	0.21	HMDXX1

Note: 85 Durometer minimum for pneumatic connectors.



Pneumatic Connectors for Size 2 Dual P.O. Check Valves

		Elbow Version		Straight Version	
		Weight (oz)	Order Code	Weight (oz)	Order Code
Tube Push-in Connector	6mm OD	0.18	CMD06-2	0.11	FMD06-2
	1/4" OD	0.18	CMD07-2B	0.11	FMD07-2B
	8mm OD	0.21	CMD08-2	0.14	FMD08-2
	3/8" OD	0.21	CMD09-2B	0.14	FMD09-2B
	10mm OD	0.25	CMD10-2	0.18	FMD10-2
	12mm OD	0.28	CMD12-2	0.21	FMD12-2
	1/2" OD	—	—	0.21	FMD13-2B
Double Male Union (For Peripheral Valve Modules)	—	—	—	0.28	HMDXX2

Note: 85 Durometer minimum for pneumatic connectors.