

Application Specific Cylinders

Why should your designers spend time and money designing a machine around standard products? Let us design and manufacture a cylinder that fits your application perfectly. Just give us the specifications, and we'll do the rest!

Below are examples of cylinders we designed and manufactured for a variety of applications.



Thruster for wash down



2,000 psi hydraulic extended ports



600 psi air cylinder



Large base slides



Large rod spring extend cylinder



Multi piston special housings



Air to oil boosters



Large bore



Special rod end



Special side flange



Thrust 2 diameter guide rods



5 cylinders for multi-power



Back to back 8mm bores



All stainless steel



3 inch bore stainless front flange



ADJR & ADJE



Conveyor stop



3,000 psi hydraulic



Collet closer



**Adjustable
extend stroke**



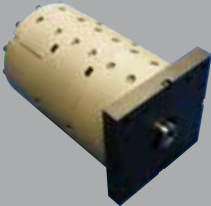
3,000 psi hydraulic 2



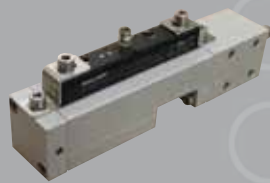
**Adjustable
retract stroke**



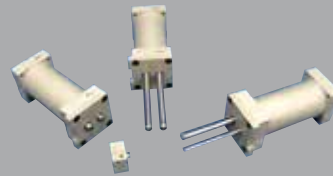
**Destaco clamp
cylinder**



**6 inch bore three
stage double ports**



**Position feedback
device**



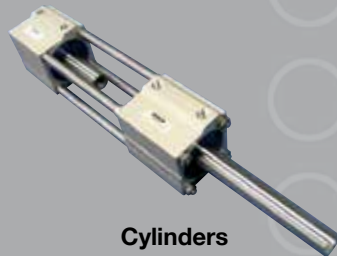
Dual rod



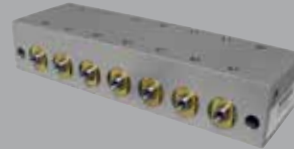
8 inch bore



Fabco interchange



**Cylinders
with standoffs**



**Multi-bore
common ported**



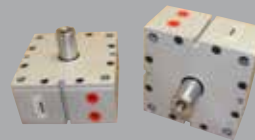
Long stroke



Slide 10mm



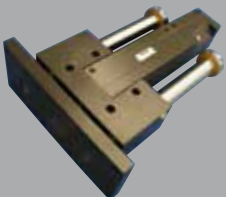
Slide Interchange



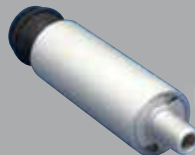
Festo Interchange



NFPA Interchange



Slide, multi-position



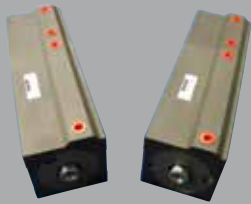
Vacuum cylinder



High speed high output



**Slide stainless steel
with valve manifold**



**Multi-position
hardcoat**



Valve manifold



Hollow rod



Non-rotating



Threaded body



**Valve mount
hi-speed cylinder**



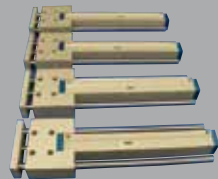
**Hollow rod,
oversized rod**



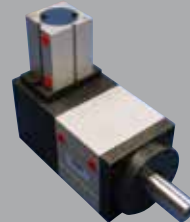
Pump cylinder



**Round cylinder
spec flange**



Slide 12 inch stroke



Locking cylinder



Plastic cylinder



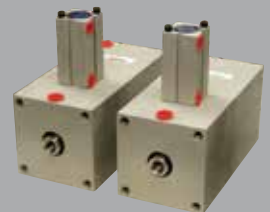
**Stainless
steel coupler**



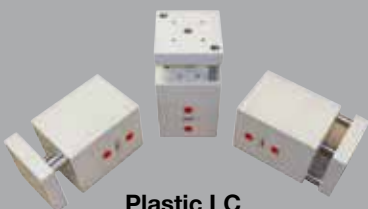
Valve and switch assy



**Multi-bore
common housing**



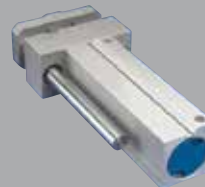
**Locking Cylinder,
extended stroke**



Plastic LC



Booster dual stage



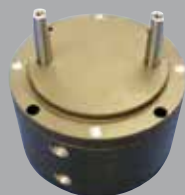
Simple slide



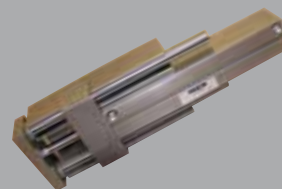
Slide 10mm



Z compliance



Twin rod cylinder



**Stainless steel slide
adjustable stroke**