



User's Manual



920 Series RTD Transmitter

920_Prog Txr Software



Table of Contents

System Requirements	3
Installing the Software	3
Uninstalling the Software	3
Reading Device Configuration	4
Programming Device	5
Changing Device Settings	5
TAG Name	5
Calibration Date	6
Filtering	7
Operation Range and Units	7
Current Adjustment	8
Sensor Failure Settings	9
Calibration	9
“One Point” Calibration	10
“Two Point” Calibration	10
Wiring Diagrams	11-12



920_Prog Txr

User's Manual – Preliminary Version

System Requirements

To install the 920_Prog Txr Software, you need these minimum system requirements:

- Pentium III – 600 MHz or better
- 10 MB of Hard Disk space
- 256 MB of RAM
- Windows XP or VISTA
- 1 USB port

Installing the Software

***** IMPORTANT *****

If you already have an old version of the 920_Prog Txr Software on your computer you must first uninstall it. To do so, use the Windows Add/Remove Program utility in the Control Panel.

***** IMPORTANT *****

For the 920_Prog Txr Software to work properly on your computer you must have the decimal symbol set to the dot (.) in Windows. To verify or modify that option open the “Regional and Language Options” in the Windows Control Panel and select the “Regional Options” tab. Click on the “Customize...” button and then make sure the dot (.) is used for the decimal symbol.

- Install the USB driver by running the “CP210xVCPInstaller” program located in the root directory of the CD.
- Run the “920_Prog Txr .MSI” program located in the root directory of the CD.
- The 920_Prog Txr Setup program will automatically start.
- By default, the 920_Prog Txr Software will be installed in the “Program Files\920_Prog Txr ” directory. You can change the installation directory by clicking on the “Change Directory” button during the setup procedure.
- After the installation is completed, the 920_Prog Txr Software will be accessible via the Start-Program menu of Windows.

Uninstalling the Software

To uninstall the software, use the “Add/Remove Program” utility in the Control Panel of Windows. The program and all its associated files will be automatically deleted from your computer.

Reading Device

By launching the 920_Prog Txr Software, the main window of the 920_Prog Txr software will appear on the screen (Figure #1).

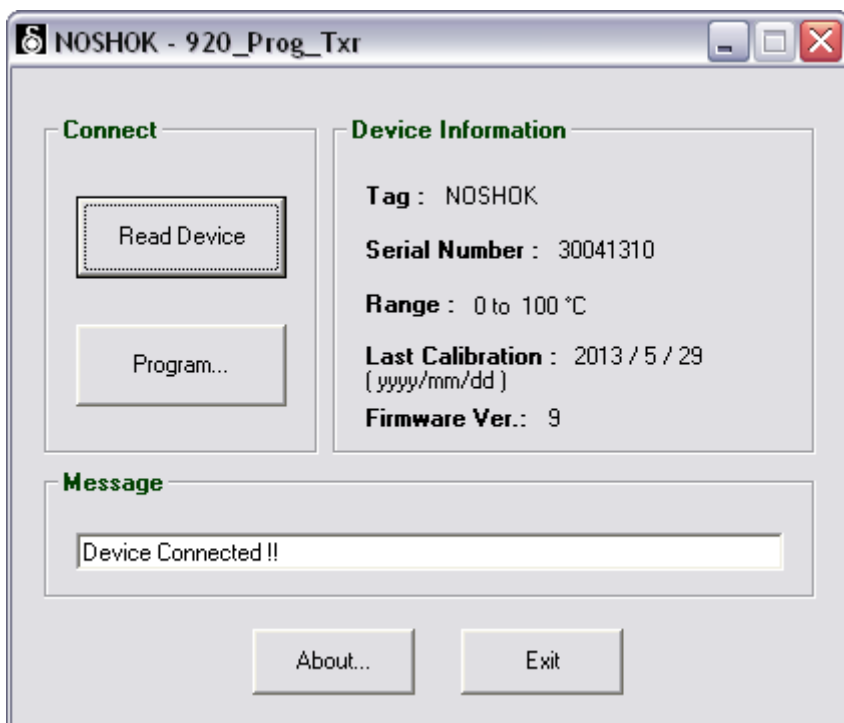


FIGURE #1

To establish the communication between the 920_Prog Txr software and the RTD transmitter, click on the “Read Device” button. The software will automatically scan all the communication ports available on the computer and will try to establish the communication with the RTD transmitter. Once the communication is established, the right section of the main window (“Device Information”) will be updated with the values downloaded from the transmitter.

If the communication cannot be established, a message will appear on the screen asking for a manual connection. By clicking “Yes”, the manual connection dialog box will appear. The proper communication port must then be selected in the drop down list and clicking on the “Read Device” button will make an attempt to establish the communication through the selected port.



920_Prog Txr User's Manual – Preliminary Version

The communication ports available on the computer can be seen in the Device Manager of Windows. The USB driver automatically creates a virtual COM port when the communication module is connected and will appear in the Device Manager under the section "Ports" - "Silicon Labs CP210x".

If the communication is established, all the information is downloaded from the RTD Transmitter and the right section of the main windows ("Device Information") is updated with the actual values. If the communication cannot be established an error message will appear. If the communication port cannot be found the message will display "Communication Port Not Available". This means the communication port selected is not configured on the computer or used by another peripheral. If the communication port is valid but the communication cannot be established with the RTD Transmitter, the message will display "Device not found". In this case make sure the RTD Transmitter is connected to the communication port selected and the wiring was made correctly. Once the communication with the RTD Transmitter is established, the "Program" button will become enabled. Clicking on this button will give access to the programming window.

Programming Device

The programming window (FIGURE #2) allows you to change the device settings, the operating range and re-calibrate the device.

Changing device settings:

The "Settings" section of the programming window includes all the configurable settings device. The "General" section contains the TAG name, the last calibration date and the filtering options.

TAG Name:

The TAG name is used to identify the device. It can contain a maximum of eight (8) alphanumeric characters. To set or change the TAG name, simply enter the value in the text box called TAG in the GENERAL section of the programming window. If the name entered is more than eight characters only the first eight will be saved. To upload the TAG name into the device, click on the "SET" button in the GENERAL section. The "SET" button also updates the calibration date as well as the filtering option.

Calibration Date:

To modify the last calibration date value, simply enter the new date in the text boxes called "Calibration Date". The date has to be entered under the format Year/Month/Day. Clicking on the "Computer Date" button will automatically set the calibration date to the computer's date. Once the date is entered correctly, click on the "SET" button, located in the GENERAL section, to upload the value into the RTD Transmitter. The "SET" button also updates the TAG name as well as the filtering option.

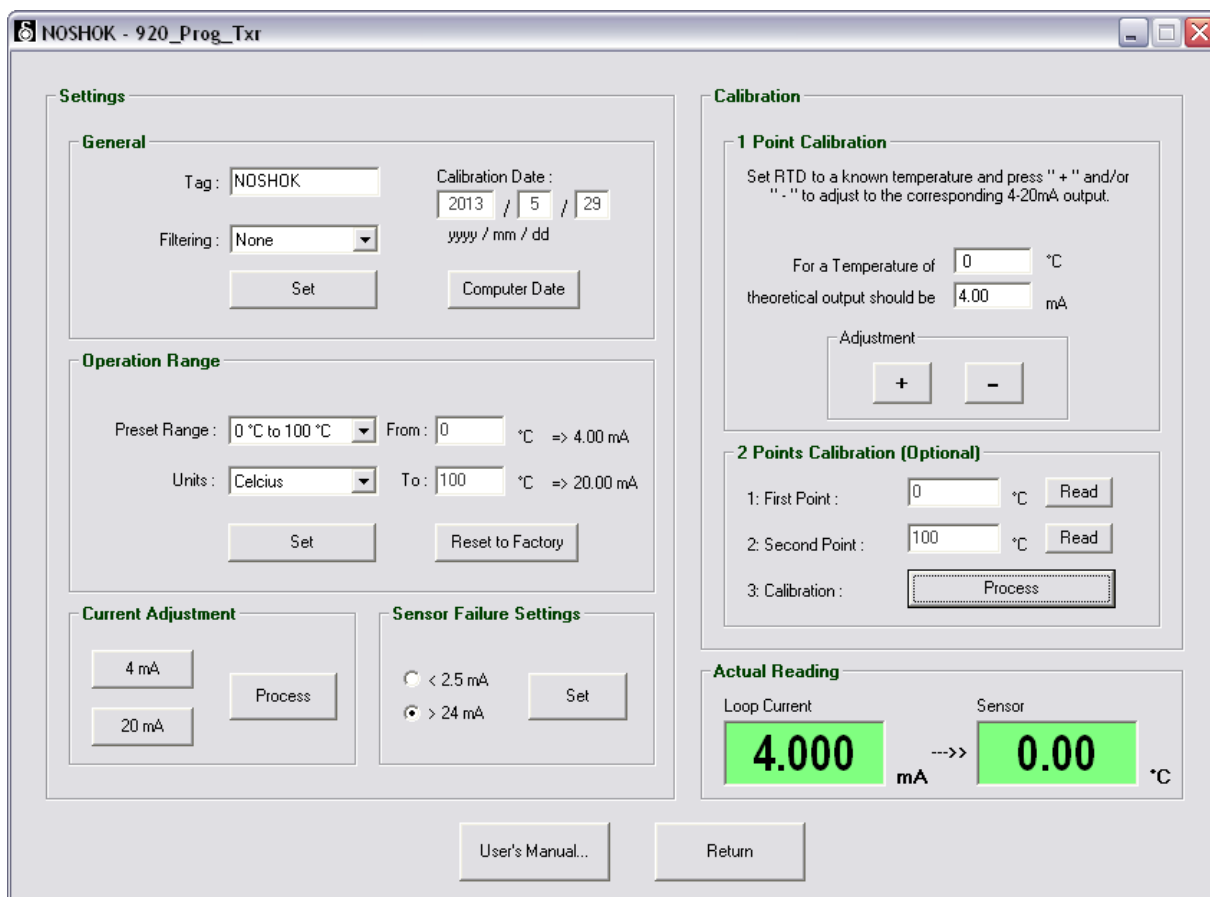


FIGURE #2



920_Prog Txr User's Manual – Preliminary Version

Filtering:

The filtering option allows the user to set the time response of the digital filter implemented in the RTD Transmitter . There are four (4) different settings. The first

one is “none” which means the response time of the output is only dependent of the mechanical construction of the RTD sensing portion. The other settings are 1, 3 and 5 seconds. To change the filter response time, simply click on the selection box called “Filtering”, choose the appropriate setting and click on the “SET” button located in the GENERAL section. It is recommended to set filtering to 1 sec. The “SET” button will also update the TAG name as well as the calibration date.

Operation Range and Units:

The RTD Transmitter can be re-scaled within its construction limit range at any time. The user can choose among a list of thirteen (13) different preset ranges or enter the values manually. This section of the software, called OPERATION RANGE, allows also the user to change the engineering units from Celsius to Fahrenheit and vice versa.

To change the engineering units, simply click on the selection box called “Units” and select the desired value. Once it is selected, click on the “SET” button located in the OPERATION RANGE section.

Each time you click on the “SET” button of the OPERATION RANGE section, a warning message will appear on the screen, indicating that you are about to re-scale the output of the RTD Transmitter. You can then choose to proceed or not with the new settings.

When the units are changed, the operation range is also changed to the same numerical values but in different engineering units. (Ex. If a RTD Transmitter is configured as a 0 to 100 °C and the units are changed to Fahrenheit then the device will become configured as a 0 to 100 °F). When the units are changed, the “Preset Range” values are also automatically changed to match the new engineering units.

To re-scale the RTD Transmitter to one of the pre-defined range, simply click on the “Preset Range” selection box, choose the appropriate range and then click on the “SET” button located in the OPERATION RANGE section. Once the new range is set, the “Actual Reading”, located in the bottom right of the Programming window, will be updated with the new values.

To re-scale the RTD Transmitter in a range that is not included in the “Preset Range”, simply enter the value, in the current engineering units, that corresponds to a reading of 4 mA and 20 mA, in their respective text boxes. To apply this new range, click on the “SET” button located in the OPERATION RANGE section. Once the new range is set, the “Actual Reading”, located in the bottom right of the Programming window, will be updated with the new values.

If the selected range is out of the construction limit of the RTD Transmitter an error message will appear on the screen and the RTD Transmitter will not accept this new setting. It is important to note that changing the range and/or engineering units will not affect the calibration previously done.

Clicking on the “Reset to Factory” button will re-program the RTD Transmitter with its range and calibration values as they were set at the factory according to the customer specifications.

Current Adjustment:

The current adjustment feature permits a verification/adjustment of the current output against a current loop indicator independent of the sensor temperature. It can also be used for troubleshooting by simply forcing the output of the RTD Transmitter to its 4.00 mA or 20.00 mA values.

The RTD Transmitter current output is already adjusted at the factory against a high accurately current indicator. If the user wants a perfect match between his loop current indicator and the RTD Transmitter, he can re-adjust the output. This is performed by first clicking on the “4 mA” button located in the CURRENT ADJUSTMENT section of the Programming window. This will force the RTD Transmitter output to the theoretical value of 4.00 mA. Once the button is pressed, a small dialog box appears on the screen (**Figure 3-A**) allowing the user to set the output current, by clicking on the “+” or “-” button, to read exactly 4.00 mA on his loop current indicator. When the indicator reads 4.00 mA then click on the “Set” button to record the new value in the RTD Transmitter

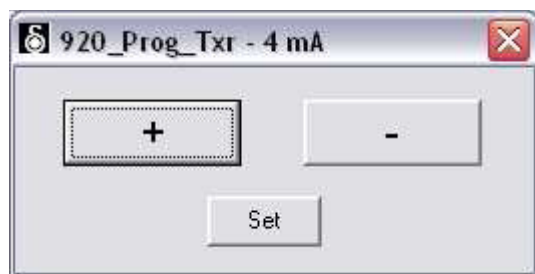


Figure 3-A

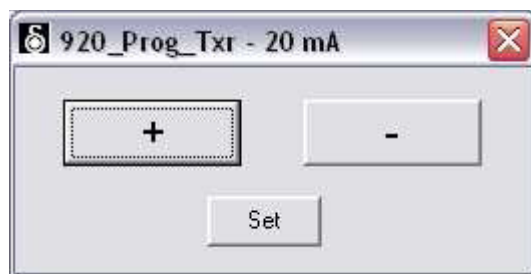


Figure 3-B

The next step is the adjustment of the 20 mA. To perform that operation, simply click on the 20 mA button located in the CURRENT ADJUSTMENT section of the “Programming” window. This will force the RTD Transmitter output to the theoretical value of 20.00 mA.

Once the button is pressed, a small dialog box appears on the screen (**Figure 3-B**) allowing the user to set the output current, by clicking on the “+” or “-” button, to read exactly 20.00 mA on his loop current indicator. When the indicator reads 20.00 mA then click on the “Set” button to record the new value in the RTD Transmitter.

The last step is the calculation and recording of the output adjustment parameters. This is performed by clicking on the “Process” button located in the CURRENT ADJUSTMENT section of the “Programming” window. The 920_Prog Txr program then reads the 4.00 mA and 20.00 mA values that have been set earlier in the RTD Transmitter, calculates the adjustment parameters and uploads the new values in the RTD Transmitter memory.

The current adjustment can be performed at any time and not necessarily in order (i.e. the 20 mA output adjustment can be performed before the 4 mA adjustment). If necessary, only one of the 4 mA or 20 mA can be performed. When the current adjustment parameters are calculated, the values are taken from the RTD Transmitter memory.

Sensor Failure Settings:

The failed value represents the output value at which the transmitter will be set if a failure is detected on the **Resistive Temperature Detector**. The two available choices are “<2.5 mA”, which correspond to an output of about 2.5 mA or lower, and “>24 mA”, which correspond to an output of about 24 mA or higher. To set the failed value click on the radio button, in the SENSOR FAILURE SETTINGS section, corresponding to your choice and then click on the “SET” button, located in the same section, to update the setting in the RTD Transmitter.

Calibration:

By default, every RTD Transmitter is calibrated at one point at the factory but the user can, with the help of the 920_Prog Txr software, re-calibrate or re-scale the RTD Transmitter. Two types of calibration are available through the 920_Prog Txr software. The first one is the “One point” calibration, which allows the user to calibrate the RTD Transmitter against one known temperature value in the operating range. The second type is the “Two point” calibration, which allows the user to calibrate the RTD Transmitter against two known points in the operating range.

“One Point” Calibration

The “One point” calibration allows the user to offset the output of the RTD Transmitter to match perfectly a known temperature to which the RTD Transmitter is set.

To perform this calibration, a known and stable temperature reference is required. Set the RTD Transmitter to this known reference temperature and wait long enough to be sure that the reading is stabled. To establish what the output current should be at this reference temperature, the user can enter the value of the reference temperature (in the current engineering units) in the corresponding text box (“*For a Temperature of* “) located in the “1 POINT CALIBRATION” section of the “Programming” window.

The theoretical output current will then be automatically calculated and displayed in the corresponding text box (“*theoretical output should be* “). If the current indicated by the loop current indicator does not match the theoretical value, then click on the “+” or “-” button of the “Adjustment” section to adjust the output reading to the correct value. Every time the “+” or “-” buttons are clicked, the new value is uploaded and saved in the RTD Transmitter memory.

NOTE:

The “Actual Reading” section located on the bottom right section of the Programming window displays values calculated by the 920_Prog Txr program. This calculation is based on the digital reading (via the USB) and may not correspond exactly to the current output read by the loop indicator. For better accuracy, use the reading from a calibrated loop indicator to make the adjustments.

“Two Point” Calibration

The “Two point” calibration allows the user to calibrate the RTD Transmitter against two known reference temperatures in the operation range. This calibration is performed in three steps.

The first step is the “First Point” reading. The RTD Transmitter has to be set at a known and stable reference temperature inside its operating range. The first point must be at a lower value then the “Second Point”. Once the output reading from the RTD Transmitter is stable, enter the temperature value in the text box called “First Point:” located in the 2 POINTS CALIBRATION section, and click on the corresponding “Read” button. The input value is then saved in the RTD Transmitter memory as well as the temperature reference for the first point.

The second step is the “Second Point” reading. The RTD Transmitter has to be set at a known and stable reference temperature inside its operating range. The second

point must be at a higher value than the “First Point”. Once the output reading from the RTD Transmitter is stable, enter the temperature value in the text box called “Second Point:” located in the 2 POINTS CALIBRATION section, and click on the corresponding “Read” button. The input value is then saved in the RTD Transmitter memory as well as the temperature reference for the second point.

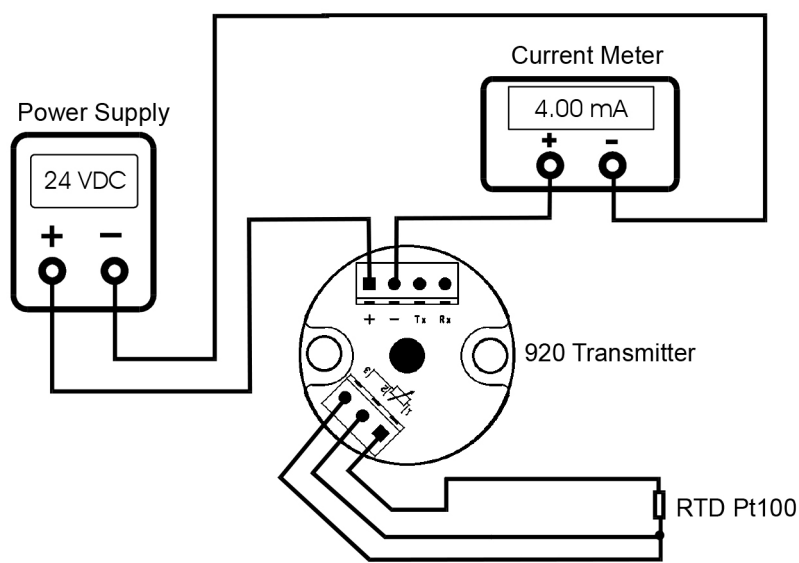
The third and last step is to perform the calculation of the calibration parameter. This is done by clicking on the “Process” button located in the 2 POINTS CALIBRATION section. This action causes the 920_Prog Txr software to download the first and second point values from the RTD Transmitter and calculates the calibration parameters from a linear extrapolation between the two points recorded. The new calibration parameters are then uploaded and saved in the RTD Transmitter memory. The output of the RTD Transmitter is automatically recalculated without having to re-initialize it.

NOTE:

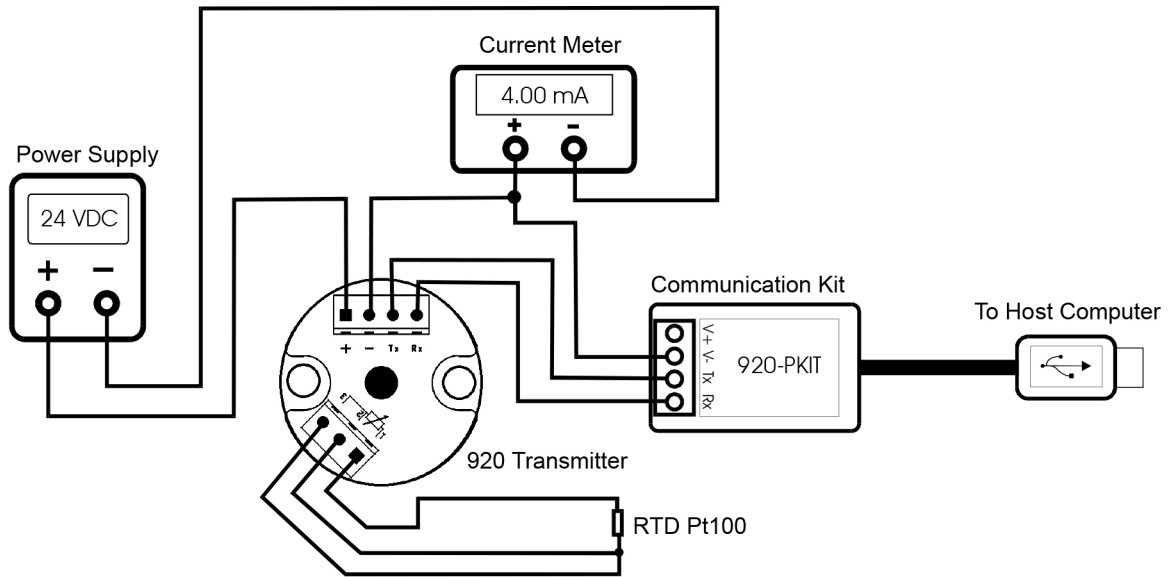
The reading of the first and second calibration points do not have to be performed at the same time or in the order indicated.

Wiring Diagrams

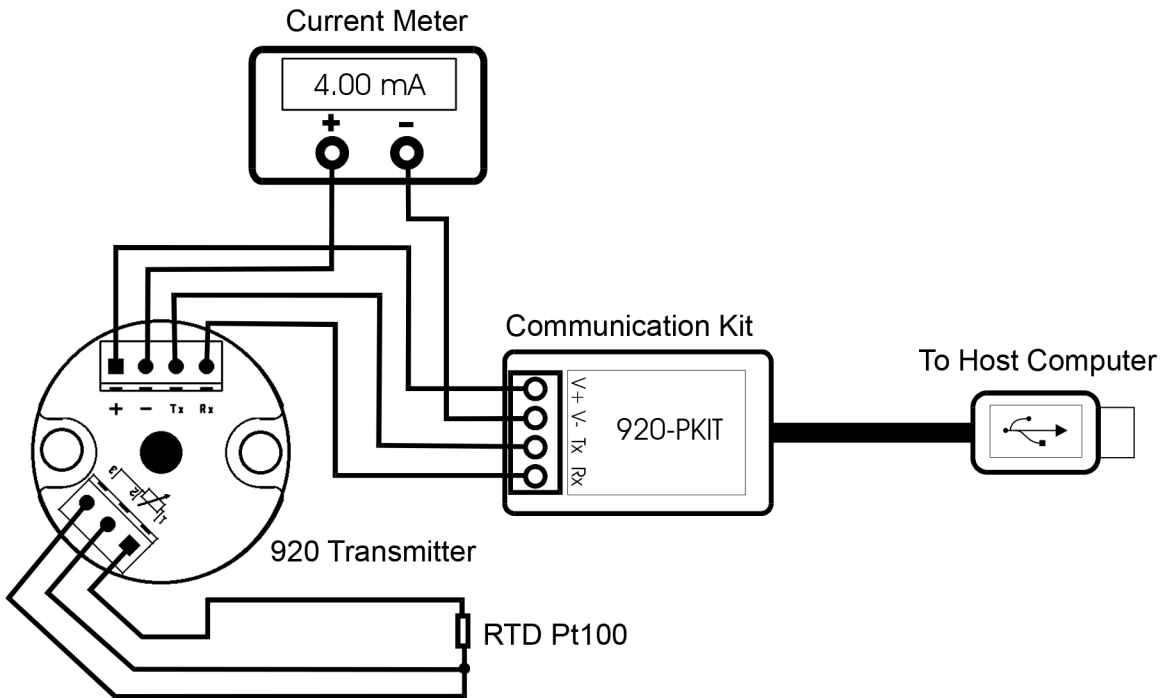
- Stand alone version



○ **Communication mode with external power supply**



○ **Communication mode - powered by communication module**



Corporate Headquarters
 1010 West Bagley Road , Berea, Ohio 44017
 Ph: 440.243.0888
 Fax: 440.243.3472
 E-mail: noshok@noshok.com
 Web: www.noshok.com

ISO 9001:2008
 REGISTERED