

## SC SERIES STOPPER CYLINDERS

### Common Features

Nason's SC series stopper cylinders were designed for today's demanding conveyor systems. With more power in a smaller package, the SC series stopper cylinder is offered in seven different mounting styles with three different rod end configurations to fit into almost any design situation.

### Compact Size

Nason's SC series cylinders were designed with today's conveyor systems in mind. Five bore sizes with a variety of strokes and rod end options ensure a perfect fit for each application. Nason is able to fit a larger bore size into the same package as comparable competitive products.

### Rugged Construction

The SC series incorporates 60,000 PSI tensile strength bearings with an oversized 100,000 PSI yield strength rod for maximum stopping power.

### Versatile Design

The SC series stopper cylinders are metric in design (bore & rod size). They are offered in inch or metric mounting and porting. Five different threaded mounting options and two different flange mounting options ensure an exact fit into today's tight space requirements. Due to their 100% machined design they are easily customized by Nason.

### Rebuildable

All SC series cylinders are field rebuildable.

## SC SERIES STOPPER CYLINDERS

How to Order	75
Engineering Data	76
20mm Bore	77
25mm Bore	80
32mm Bore	83
40mm Bore	86
50mm Bore	89
Rod End Styles	92
Flange Mount	93

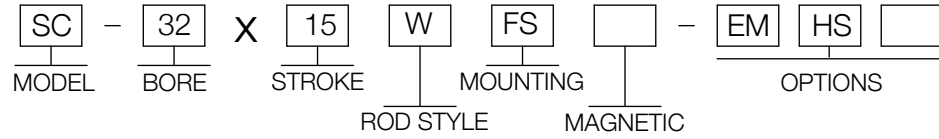
NEW  
PRODUCT



**How to Order**

Example:

Part Number: SC-32X15WFS-EMHS



<b>MODEL</b>
SC - Stopper Cylinder

<b>BORE</b>
20 - 20mm (.79")
25 - 25mm (.98")
32 - 32mm (1.26")
40 - 40mm (1.58")
50 - 50mm (1.97")

<b>STROKE</b>	
20mm Bore	10 - 10mm Stroke
	15 - 15mm Stroke
25mm Bore	10 - 10mm Stroke
	15 - 15mm Stroke
	20 - 20mm Stroke
32mm Bore	10 - 10mm Stroke
	15 - 15mm Stroke
	20 - 20mm Stroke
40mm Bore	20 - 20mm Stroke
	25 - 25mm Stroke
	30 - 30mm Stroke
50mm Bore	20 - 20mm Stroke
	25 - 25mm Stroke
	30 - 30mm Stroke

<b>ROD STYLE</b>
BLANK (No Code) - Round Rod
F - Flat Rod
W - Flat Rod with Roller

<b>MOUNTING</b>
MF - Threads on Front Face (Rod End)
MR - Threads on Rear Face (Opposite Rod)
MB - Threads on Both Faces
MT - Drilled Through and Counterbored for Bolt Clearance
MS - Threads on Side of Cylinder Body
FR - Flange on Rear Face (Opposite Rod)
FS - Flange on Side of Cylinder Body

<b>MAGNETIC</b>
BLANK (No Code) - Standard "NO MAGNET" Piston
M - Magnetic Piston and Sensor Mounting

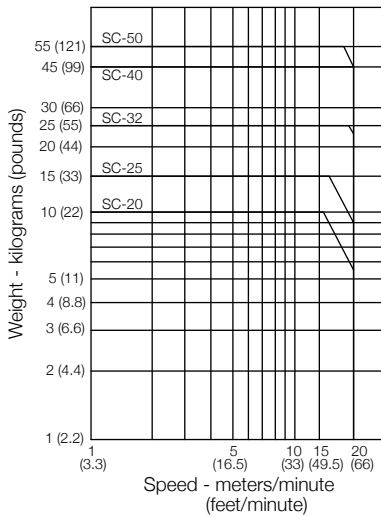
<b>OPTIONS</b>
EM - Inch Threads (Mounting and Ports)
HS - High Temperature Seals -10 C to 150 C (0 F to 302 F)
UR - Urethane Shock Pad Rear (Opposite Rod)

Operating Media: Air (Clean, Dry or Lubricated)  
 Maximum Operating Pressure: 17 Bar (250 PSI)  
 Operating Temperature: -10 C to 95 C (0 F to 200 F)  
 Packing: Buna N  
 Lubrication: PTFE impregnated grease  
 Stroke Tolerance: +1,0mm/-0mm (+0.04"/-0")

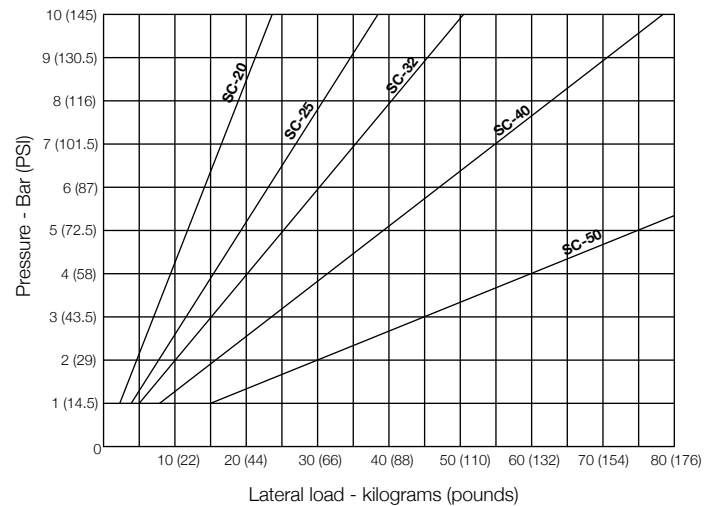
**Unit Weights kg (lbs)**

BORE	STROKE				
	10	15	20	25	30
20	0.15 (.34)	0.16 (.36)	—	—	—
25	0.21 (.47)	0.23 (.50)	0.24 (.53)	—	—
32	0.43 (.94)	0.45 (1.0)	0.48 (1.06)	—	—
40	—	—	0.74 (1.67)	0.79 (1.75)	0.83 (1.83)
50	—	—	1.10 (2.43)	1.15 (2.53)	1.19 (2.63)

**Operating Ranges**



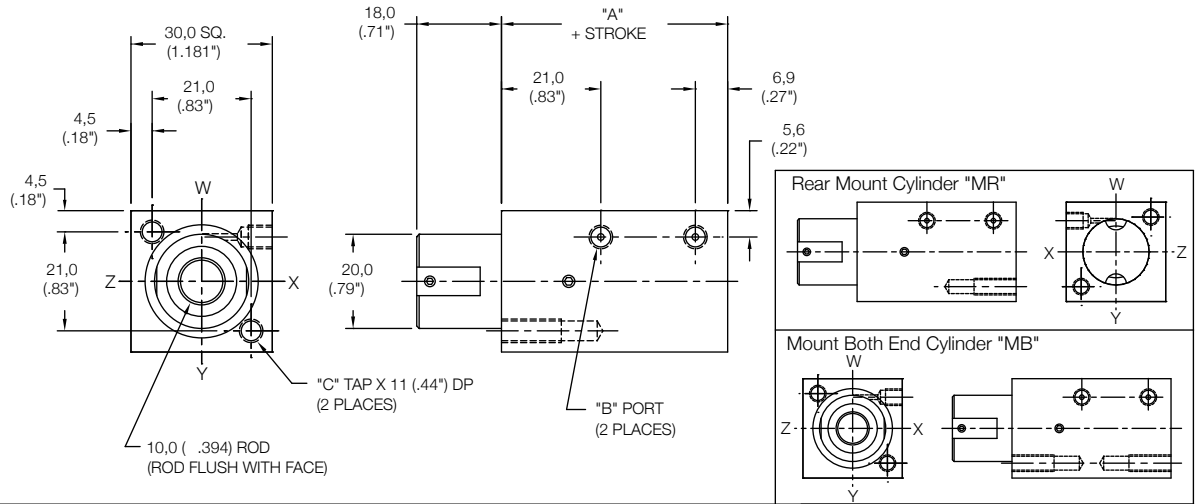
**Minimum Operating Pressure for Load**



### Non Magnetic Front Mount Cylinder "MF"

MODEL	STANDARD STROKES	"A"	PISTON AREA
SC	10mm	38,0 (1.50")	PUSH 3,14 cm <sup>2</sup> (0.48 in <sup>2</sup> )
	15mm		PULL 2,32 cm <sup>2</sup> (0.36 in <sup>2</sup> )

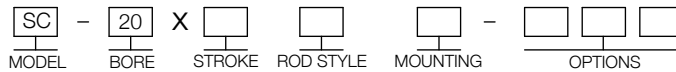
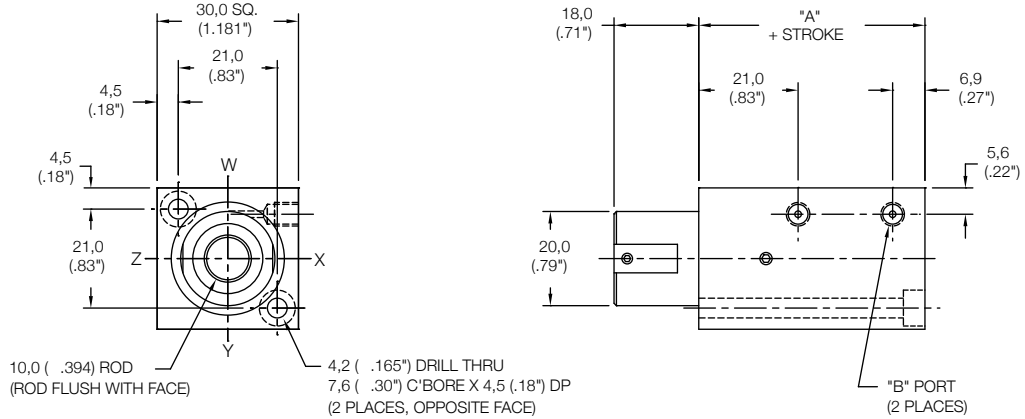
	Standard Threads	"EM" Option
"B"	M5X0,8	#10-32
"C"	M5X0,8	#10-32



### Non Magnetic Thru Mount Cylinder "MT"

MODEL	STANDARD STROKES	"A"	PISTON AREA
SC	10mm	38,0 (1.50")	PUSH 3,14 cm <sup>2</sup> (0.48 in <sup>2</sup> )
	15mm		PULL 2,32 cm <sup>2</sup> (0.36 in <sup>2</sup> )

	Standard Threads	"EM" Option
"B"	M5X0,8	#10-32



10 - 10mm STROKE  
15 - 15mm STROKE

BLANK (NO CODE) - ROUND ROD (SHOWN)  
F - FLAT ROD (SEE PAGE 92)  
W - FLAT ROD WITH ROLLER (SEE PAGE 92)

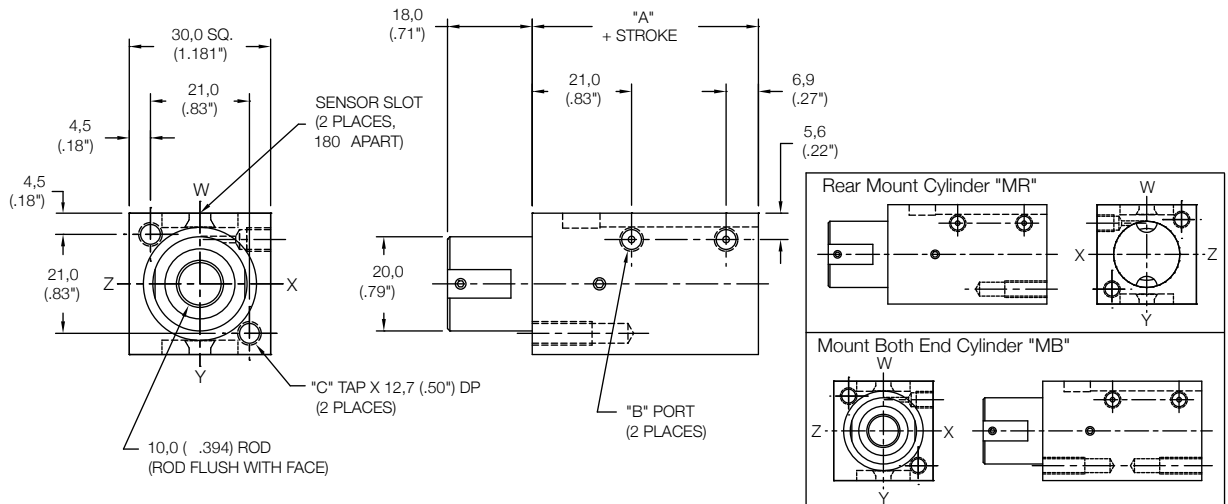
MB - BOTH END MOUNTS  
MF - FRONT MOUNT  
MR - REAR MOUNT  
MT - THRU MOUNT  
FR - FLANGE ON REAR FACE (SEE PAGE 93)

EM - INCH THREADS & PORTS  
HS - HIGH TEMP SEALS (SEE PAGE 62)  
UR - URETHANE SHOCK PAD REAR (SEE PAGE 62)

### Magnetic Front Mount Cylinder "MF"

MODEL	STANDARD STROKES	"A"	PISTON AREA
SC	10mm	38,0 (1.50")	PUSH 3,14 cm <sup>2</sup> (0.48 in <sup>2</sup> )
	15mm		PULL 2,32 cm <sup>2</sup> (0.36 in <sup>2</sup> )

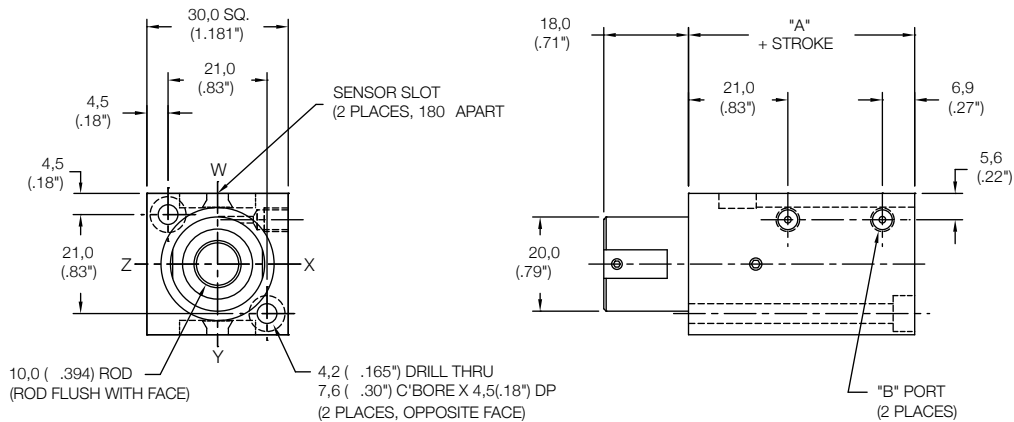
	Standard Threads	"EM" Option
"B"	M5X0,8	#10-32
"C"	M5X0,8	#10-32



### Magnetic Thru Mount Cylinder "MT"

MODEL	STANDARD STROKES	"A"	PISTON AREA
SC	10mm	38,0 (1.50")	PUSH 3,14 cm <sup>2</sup> (0.48 in <sup>2</sup> )
	15mm		PULL 2,32 cm <sup>2</sup> (0.36 in <sup>2</sup> )

	Standard Threads	"EM" Option
"B"	M5X0,8	#10-32



10 - 10mm STROKE  
15 - 15mm STROKE

BLANK (NO CODE) - ROUND ROD (SHOWN)  
F - FLAT ROD (SEE PAGE 92)  
W - FLAT ROD WITH ROLLER (SEE PAGE 92)

EM - INCH THREADS & PORTS  
HS - HIGH TEMP SEALS (SEE PAGE 62)  
UR - URETHANE SHOCK PAD REAR (SEE PAGE 62)

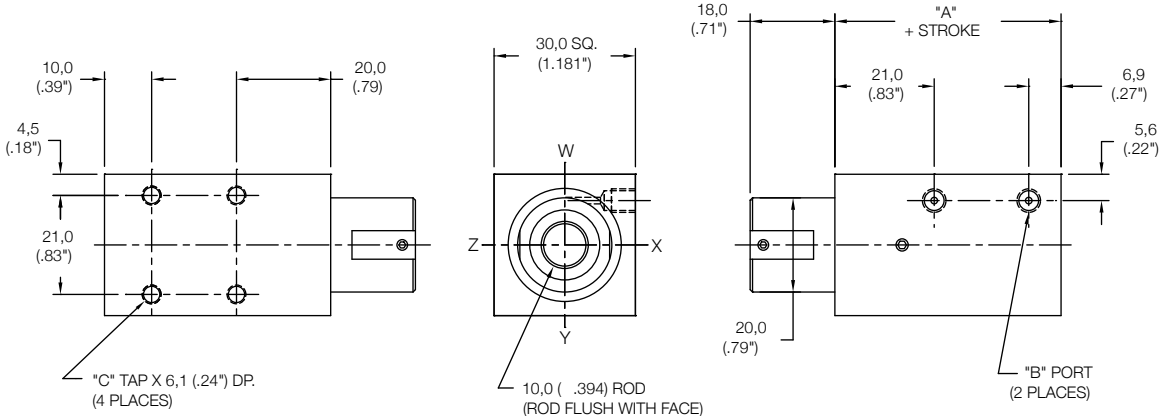
SENSORS SOLD SEPERATELY  
SKS, SKP, SCS, SCP - SOLID STATE  
LIMIT SENSORS  
(SEE PAGE 54 FOR DETAILS)

MB - BOTH END MOUNTS  
MF - FRONT MOUNT  
MR - REAR MOUNT  
MT - THRU MOUNT  
FR - FLANGE ON REAR FACE (SEE PAGE 93)

**Non Magnetic Side Mount Cylinder "MS"**

MODEL	STANDARD STROKES	"A"	PISTON AREA
SC	10mm	38,0 (1.50")	PUSH 3,14 cm <sup>2</sup> (0.48 in <sup>2</sup> )
	15mm		PULL 2,32 cm <sup>2</sup> (0.36 in <sup>2</sup> )

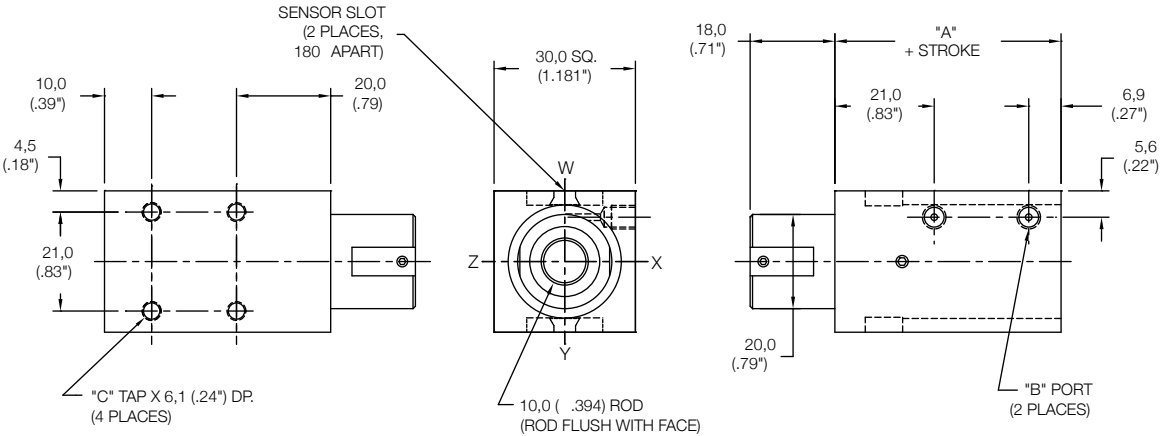
	Standard Threads	"EM" Option
"B"	M5X0,8	#10-32
"C"	M4X0,7	#8-32



**Magnetic Side Mount Cylinder "MS"**

MODEL	STANDARD STROKES	"A"	PISTON AREA
SC	10mm	38,0 (1.50")	PUSH 3,14 cm <sup>2</sup> (0.48 in <sup>2</sup> )
	15mm		PULL 2,32 cm <sup>2</sup> (0.36 in <sup>2</sup> )

	Standard Threads	"EM" Option
"B"	M5X0,8	#10-32
"C"	M4X0,7	#8-32



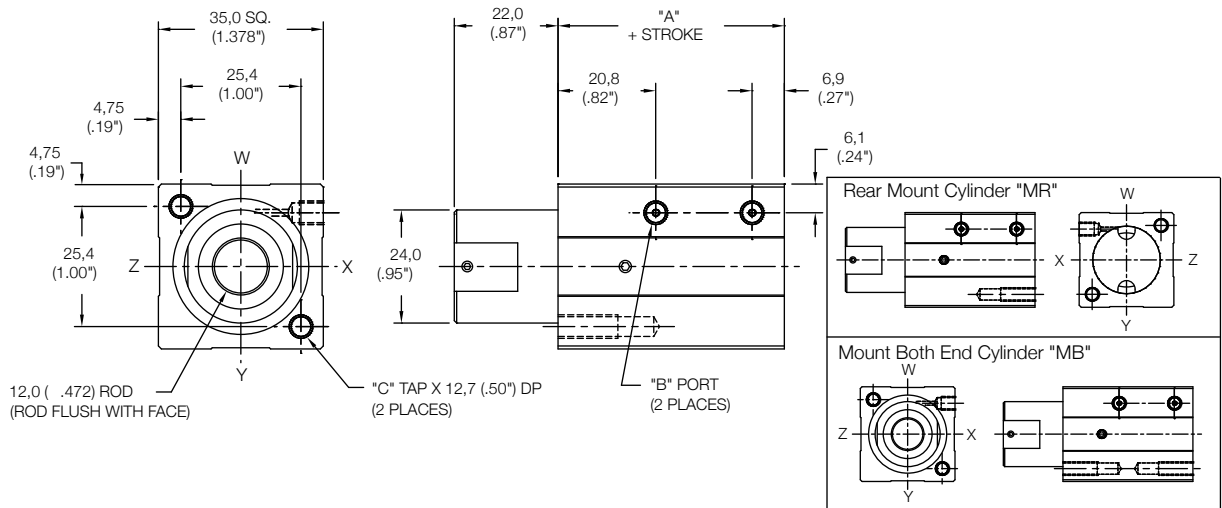
- 10 - 10mm STROKE
- 15 - 15mm STROKE
- MS - SIDE THREADS
- FS - SIDE FLANGES (SEE PAGE 93)
- EM - INCH THREADS & PORTS
- HS - HIGH TEMP SEALS (SEE PAGE 62)
- UR - URETHANE SHOCK PAD REAR (SEE PAGE 62)
- BLANK (NO CODE) - ROUND ROD (SHOWN)
- F - FLAT ROD (SEE PAGE 92)
- W - FLAT ROD WITH ROLLER (SEE PAGE 92)
- BLANK (NO CODE) - STANDARD "NO MAGNET" PISTON
- M - MAGNETIC PISTON AND SENSOR MOUNTING SLOTS

SENSORS SOLD SEPERATELY  
 SKS, SKP, SCS, SCP - SOLID STATE  
 LIMIT SENSORS  
 (SEE PAGE 54 FOR DETAILS)

### Non Magnetic Front Mount Cylinder "MF"

MODEL	STANDARD STROKES	"A"	PISTON AREA
SC	10mm	38,0 (1.50")	PUSH 4,91 cm <sup>2</sup> (0.76 in <sup>2</sup> )
	15mm		PULL 3,81 cm <sup>2</sup> (0.59 in <sup>2</sup> )
	20mm		

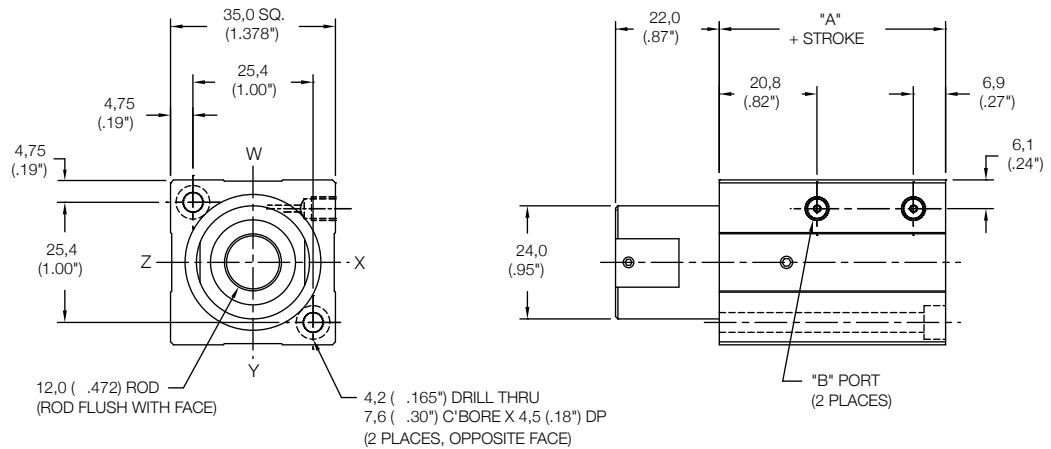
	Standard Threads	"EM" Option
"B"	M5X0,8	#10-32
"C"	M5X0,8	#10-32



### Non Magnetic Thru Mount Cylinder "MT"

MODEL	STANDARD STROKES	"A"	PISTON AREA
SC	10mm	38,0 (1.50")	PUSH 4,91 cm <sup>2</sup> (.76 in <sup>2</sup> )
	15mm		PULL 3,81 cm <sup>2</sup> (.59 in <sup>2</sup> )
	20mm		

	Standard Threads	"EM" Option
"B"	M5X0,8	#10-32



SC - 25 X     -      

MODEL      BORE      STROKE      ROD STYLE      MOUNTING      OPTIONS

10 - 10mm STROKE  
 15 - 15mm STROKE  
 20 - 20mm STROKE

BLANK (NO CODE) - ROUND ROD (SHOWN)  
 F - FLAT ROD (SEE PAGE 92)  
 W - FLAT ROD WITH ROLLER (SEE PAGE 92)

MB - BOTH END MOUNTS  
 MF - FRONT MOUNT  
 MR - REAR MOUNT  
 MT - THRU MOUNT  
 FR - FLANGE ON REAR FACE (SEE PAGE 93)

EM - INCH THREADS & PORTS  
 HS - HIGH TEMP SEALS (SEE PAGE 62)  
 UR - URETHANE SHOCK PAD REAR (SEE PAGE 62)

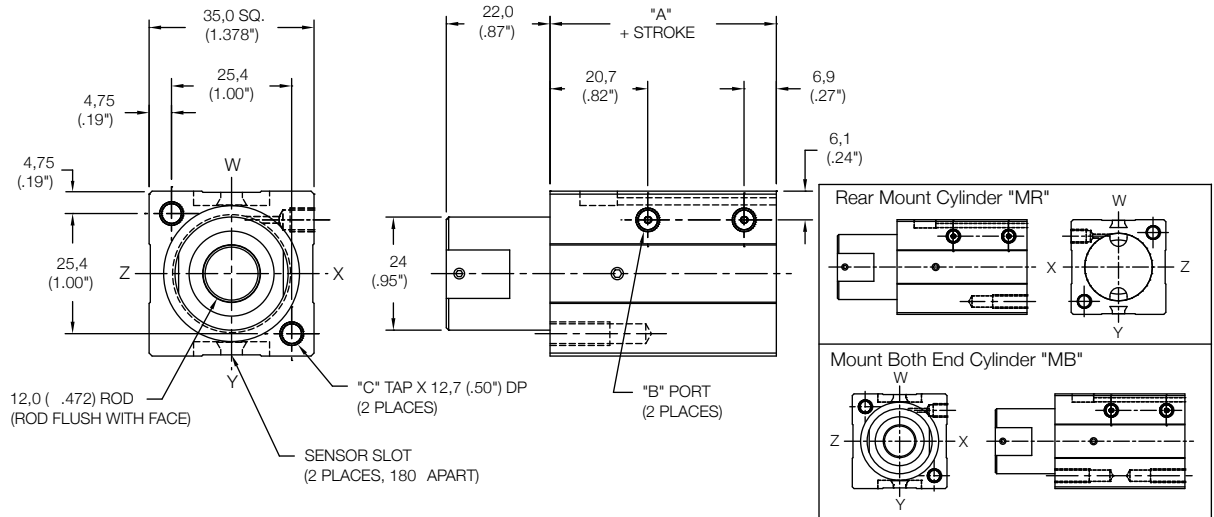
[www.comoso.com](http://www.comoso.com)



### Magnetic Front Mount Cylinder "MF"

MODEL	STANDARD STROKES	"A"	PISTON AREA
SC	10mm	38,0 (1.50")	PUSH 4,91 cm <sup>2</sup> (0.76 in <sup>2</sup> ) PULL 3,81 cm <sup>2</sup> (0.59 in <sup>2</sup> )
	15mm		
	20mm		

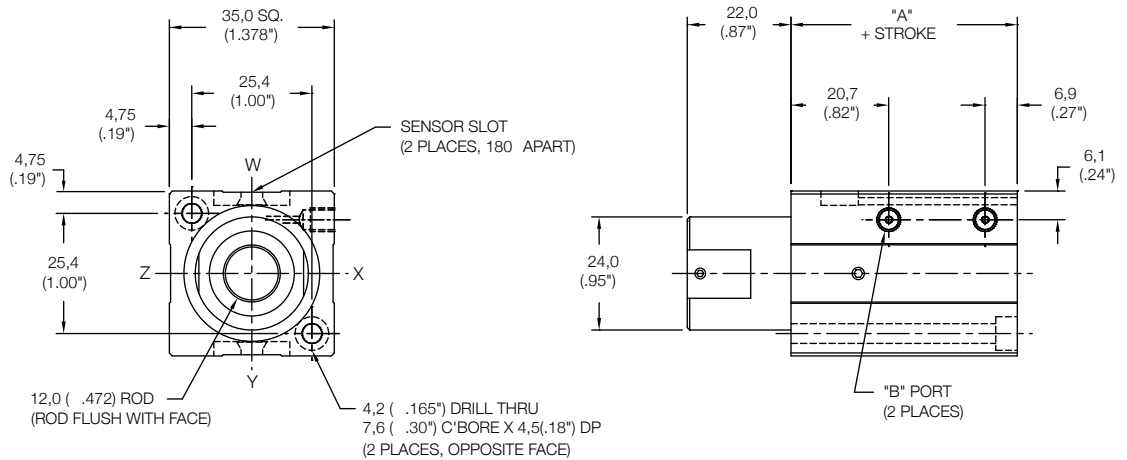
	Standard Threads	"EM" Option
"B"	M5X0,8	#10-32
"C"	M5X0,8	#10-32



### Magnetic Thru Mount Cylinder "MT"

MODEL	STANDARD STROKES	"A"	PISTON AREA
SC	10mm	38,0 (1.50")	PUSH 4,91 cm <sup>2</sup> (.76 in <sup>2</sup> ) PULL 3,81 cm <sup>2</sup> (.59 in <sup>2</sup> )
	15mm		
	20mm		

	Standard Threads	"EM" Option
"B"	M5X0,8	#10-32



SC - 25 X [ ] [ ] [ ] M - [ ] [ ] [ ]  
 MODEL BORE STROKE ROD STYLE MOUNTING MAGNETIC OPTIONS

10 - 10mm STROKE  
 15 - 15mm STROKE  
 20 - 20mm STROKE

BLANK (NO CODE) - ROUND ROD (SHOWN)  
 F - FLAT ROD (SEE PAGE 92)  
 W - FLAT ROD WITH ROLLER (SEE PAGE 92)

EM - INCH THREADS & PORTS  
 HS - HIGH TEMP SEALS (SEE PAGE 62)  
 UR - URETHANE SHOCK PAD REAR (SEE PAGE 62)

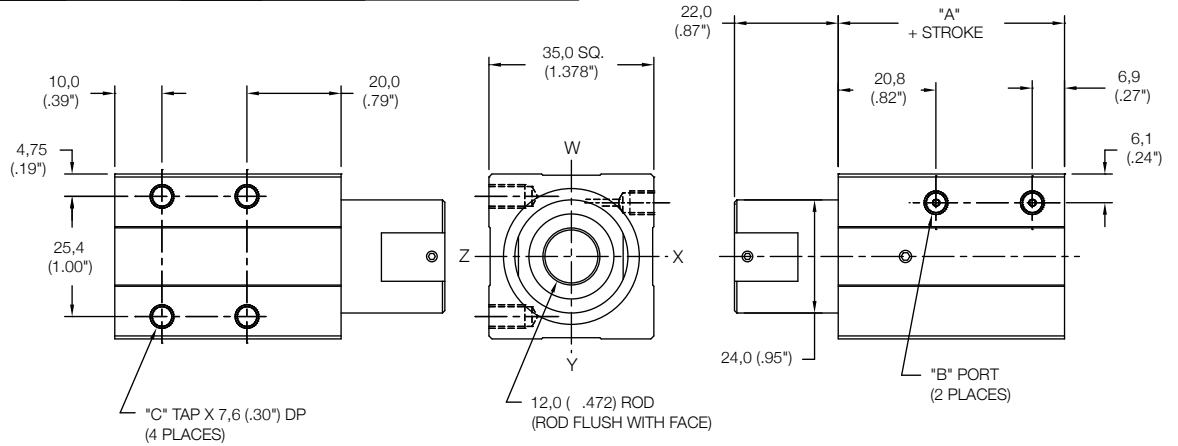
SENSORS SOLD SEPERATELY  
 SKS, SKP, SCS, SCP - SOLID STATE  
 LIMIT SENSORS  
 (SEE PAGE 54 FOR DETAILS)

MB - BOTH END MOUNTS  
 MF - FRONT MOUNT  
 MR - REAR MOUNT  
 MT - THRU MOUNT  
 FR - FLANGE ON REAR FACE (SEE PAGE 93)

### Non Magnetic Side Mount Cylinder "MS"

MODEL	STANDARD STROKES	"A"	PISTON AREA
SC	10mm	38,0 (1.50")	PUSH 4,91 cm <sup>2</sup> (0.76 in <sup>2</sup> ) PULL 3,81 cm <sup>2</sup> (0.59 in <sup>2</sup> )
	15mm		
	20mm		

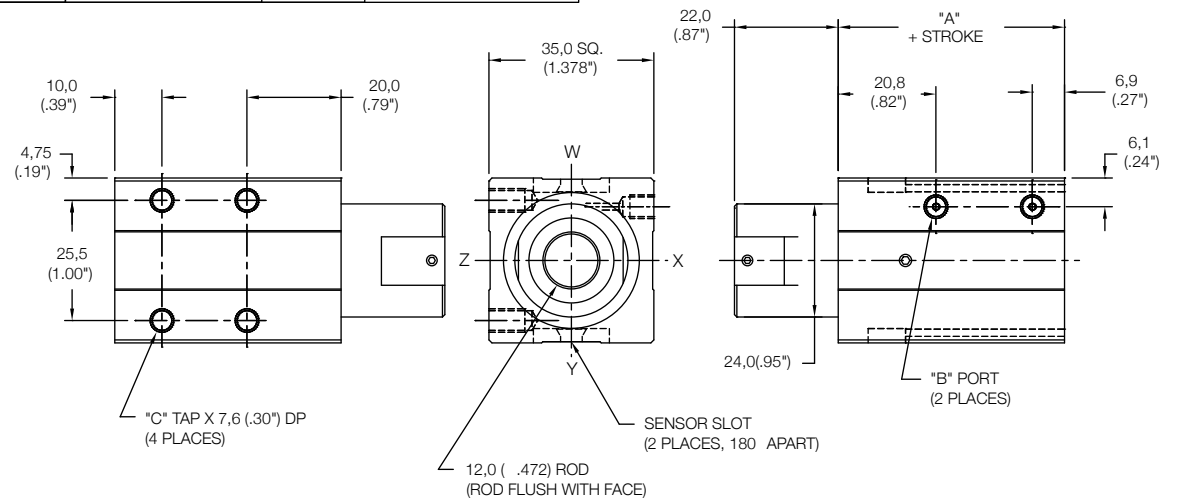
	Standard Threads	"EM" Option
"B"	M5X0,8	#10-32
"C"	M5X0,8	#10-32



### Magnetic Side Mount Cylinder "MS"

MODEL	STANDARD STROKES	"A"	PISTON AREA
SC	10mm	38,0 (1.50")	PUSH 4,91 cm <sup>2</sup> (0.76 in <sup>2</sup> ) PULL 3,81 cm <sup>2</sup> (0.59 in <sup>2</sup> )
	15mm		
	20mm		

	Standard Threads	"EM" Option
"B"	M5X0,8	#10-32
"C"	M5X0,8	#10-32



10 - 10mm STROKE  
15 - 15mm STROKE  
20 - 20mm STROKE

MS - SIDE THREADS  
FS - SIDE FLANGES  
(SEE PAGE 93)

EM - INCH THREADS & PORTS  
HS - HIGH TEMP SEALS (SEE PAGE 62)  
UR - URETHANE SHOCK PAD REAR  
(SEE PAGE 62)

BLANK (NO CODE) - ROUND ROD (SHOWN)  
F - FLAT ROD (SEE PAGE 92)  
W - FLAT ROD WITH ROLLER (SEE PAGE 92)

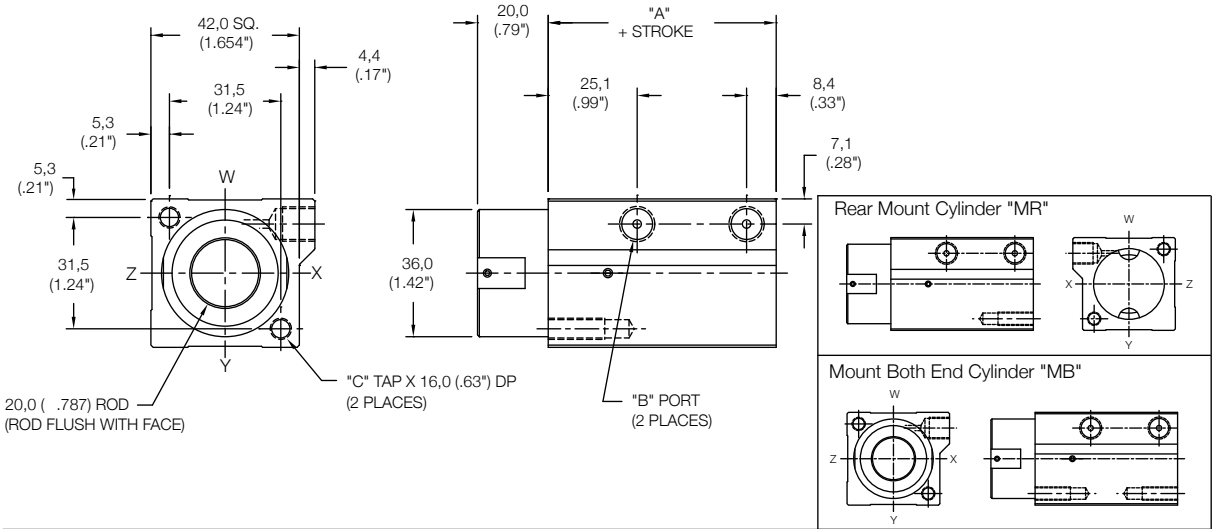
BLANK (NO CODE) - STANDARD "NO MAGNET" PISTON  
M - MAGNETIC PISTON AND SENSOR MOUNTING SLOTS

SENSORS SOLD SEPERATELY  
SKS, SKP, SCS, SCP - SOLID STATE  
LIMIT SENSORS  
(SEE PAGE 54 FOR DETAILS)

**Non Magnetic  
Front Mount Cylinder "MF"**

MODEL	STANDARD STROKES	"A"	PISTON AREA
SC	10mm	44,0 (1.73")	PUSH 8,04 cm <sup>2</sup> (1.25 in <sup>2</sup> )
	15mm		PULL 4,91 cm <sup>2</sup> (0.76 in <sup>2</sup> )
	20mm		

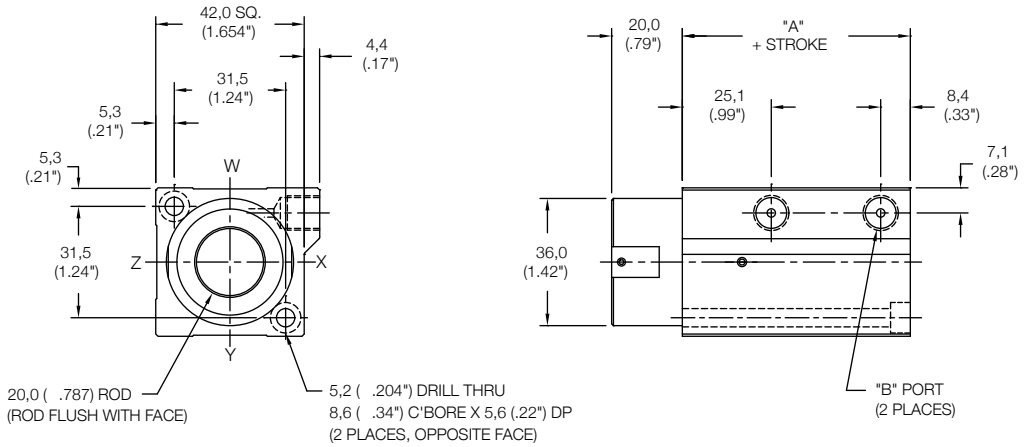
	Standard Threads	"EM" Option
"B"	G 1/8 PORT	1/8-27
"C"	M6X1,0	1/4-20



**Non Magnetic  
Thru Mount Cylinder "MT"**

MODEL	STANDARD STROKES	"A"	PISTON AREA
SC	10mm	44,0 (1.73")	PUSH 8,04 cm <sup>2</sup> (1.25 in <sup>2</sup> )
	15mm		PULL 4,91 cm <sup>2</sup> (0.76 in <sup>2</sup> )
	20mm		

	Standard Threads	"EM" Option
"B"	G 1/8 PORT	1/8-27



SC - 32 X     -      

MODEL    BORE    STROKE    ROD STYLE    MOUNTING    OPTIONS

10 - 10mm STROKE  
 15 - 15mm STROKE  
 20 - 20mm STROKE

BLANK (NO CODE) - ROUND ROD (SHOWN)  
 F - FLAT ROD (SEE PAGE 92)  
 W - FLAT ROD WITH ROLLER (SEE PAGE 92)

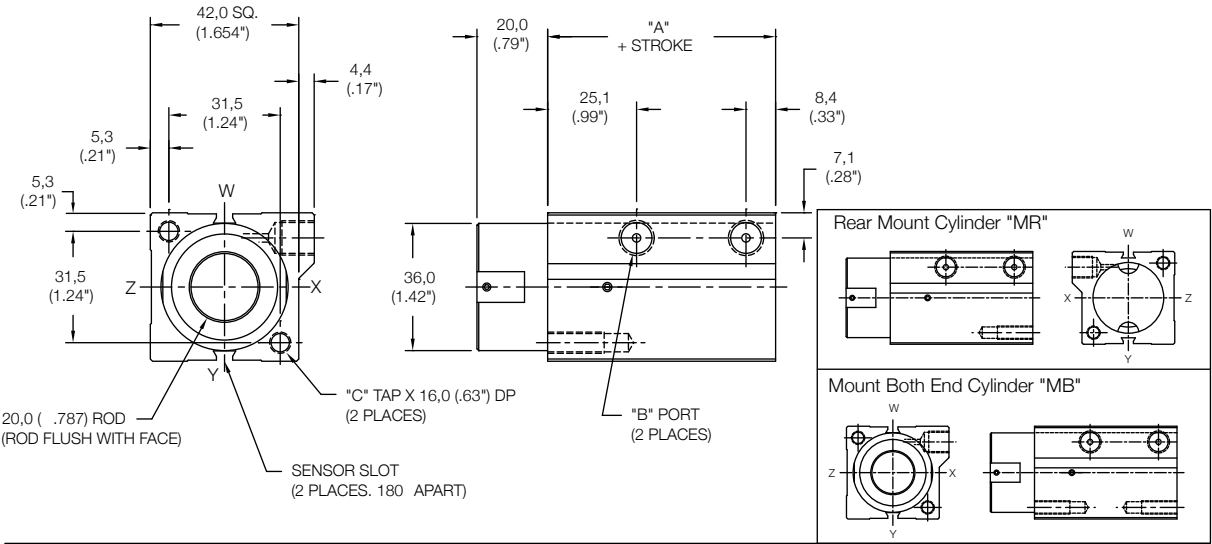
MB - BOTH END MOUNTS  
 MF - FRONT MOUNT  
 MR - REAR MOUNT  
 MT - THRU MOUNT  
 FR - FLANGE ON REAR FACE (SEE PAGE 93)

EM - INCH THREADS & PORTS  
 HS - HIGH TEMP SEALS (SEE PAGE 62)  
 UR - URETHANE SHOCK PAD REAR (SEE PAGE 62)

**Magnetic Front Mount Cylinder "MF"**

MODEL	STANDARD STROKES	"A"	PISTON AREA
SC	10mm	44,0 (1.73")	PUSH 8,04 cm <sup>2</sup> (1.25 in <sup>2</sup> ) PULL 4,91 cm <sup>2</sup> (0.76 in <sup>2</sup> )
	15mm		
	20mm		

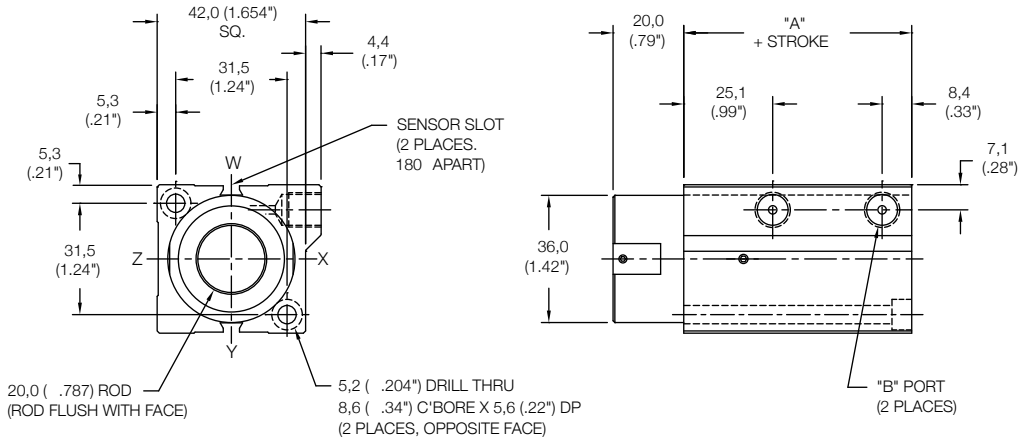
	Standard Threads	"EM" Option
"B"	G 1/8 PORT	1/8-27
"C"	M6X1,0	1/4-20



**Magnetic Thru Mount Cylinder "MT"**

MODEL	STANDARD STROKES	"A"	PISTON AREA
SC	10mm	44,0 (1.73")	PUSH 8,04 cm <sup>2</sup> (1.25 in <sup>2</sup> ) PULL 4,91 cm <sup>2</sup> (0.76 in <sup>2</sup> )
	15mm		
	20mm		

	Standard Threads	"EM" Option
"B"	G 1/8 PORT	1/8-27



SC - 32 X [ ] [ ] [ ] M - [ ] [ ] [ ]

MODEL BORE STROKE ROD STYLE MOUNTING MAGNETIC OPTIONS

10 - 10mm STROKE  
15 - 15mm STROKE  
20 - 20mm STROKE

BLANK (NO CODE) - ROUND ROD (SHOWN)  
F - FLAT ROD (SEE PAGE 92)  
W - FLAT ROD WITH ROLLER (SEE PAGE 92)

EM - INCH THREADS & PORTS  
HS - HIGH TEMP SEALS (SEE PAGE 62)  
UR - URETHANE SHOCK PAD REAR (SEE PAGE 62)

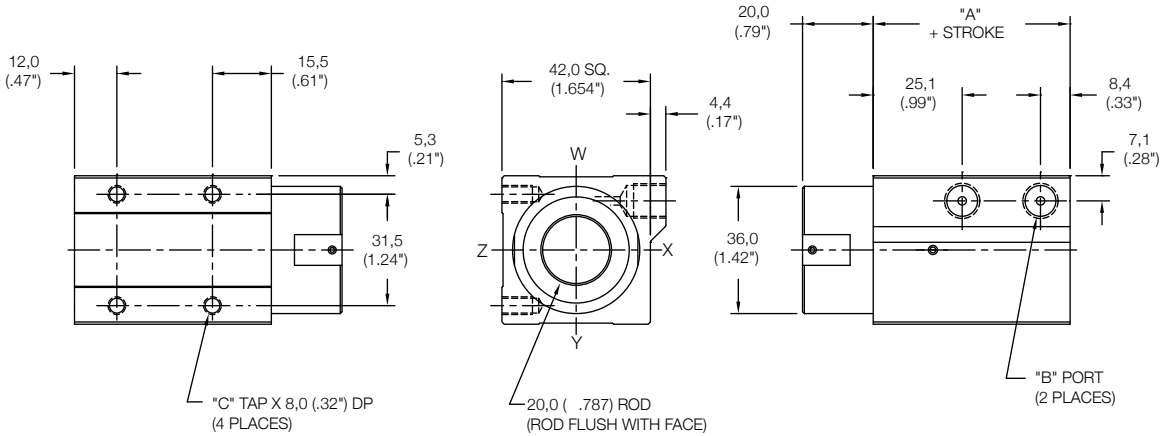
SENSORS SOLD SEPERATELY  
SKS, SKP, SCS, SCP - SOLID STATE  
LIMIT SENSORS  
(SEE PAGE 54 FOR DETAILS)

MB - BOTH END MOUNTS  
MF - FRONT MOUNT  
MR - REAR MOUNT  
MT - THRU MOUNT  
FR - FLANGE ON REAR FACE (SEE PAGE 93)

**Non Magnetic  
Side Mount Cylinder "MS"**

MODEL	STANDARD STROKES	"A"	PISTON AREA
SC	10mm	44,0 (1.73")	PUSH 8,04 cm <sup>2</sup> (1.25 in <sup>2</sup> )
	15mm		PULL 4,91 cm <sup>2</sup> (0.76 in <sup>2</sup> )
	20mm		

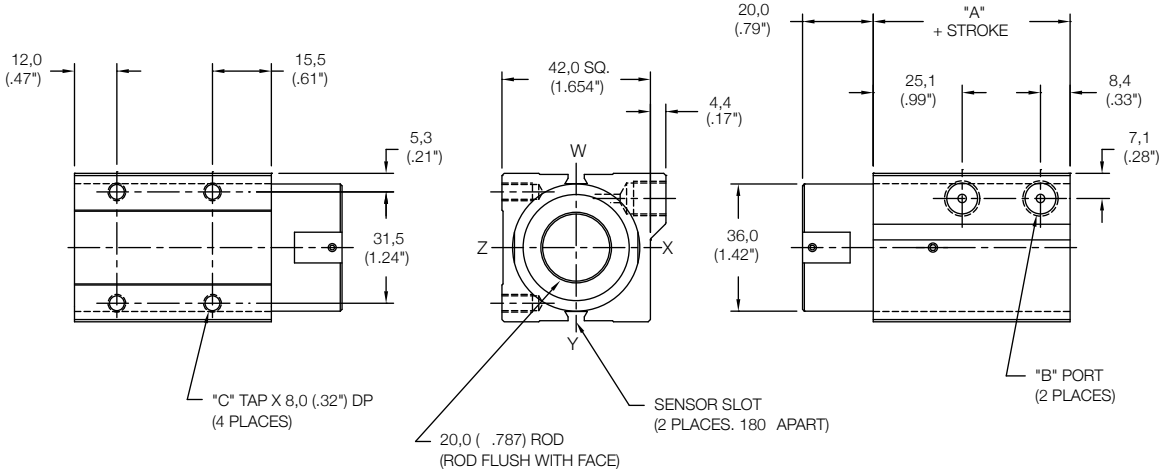
	Standard Threads	"EM" Option
"B"	G 1/8 PORT	1/8-27
"C"	M5X0,8	#10-32



**Magnetic  
Side Mount Cylinder "MS"**

MODEL	STANDARD STROKES	"A"	PISTON AREA
SC	10mm	44,0 (1.73")	PUSH 8,04 cm <sup>2</sup> (1.25 in <sup>2</sup> )
	15mm		PULL 4,91 cm <sup>2</sup> (0.76 in <sup>2</sup> )
	20mm		

	Standard Threads	"EM" Option
"B"	G 1/8 PORT	1/8-27
"C"	M5X0,8	#10-32



10 - 10mm STROKE  
15 - 15mm STROKE  
20 - 20mm STROKE

MS - SIDE THREADS  
FS - SIDE FLANGES  
(SEE PAGE 93)

EM - INCH THREADS & PORTS  
HS - HIGH TEMP SEALS (SEE PAGE 62)  
UR - URETHANE SHOCK PAD REAR  
(SEE PAGE 62)

BLANK (NO CODE) - ROUND ROD (SHOWN)  
F - FLAT ROD (SEE PAGE 92)  
W - FLAT ROD WITH ROLLER (SEE PAGE 92)

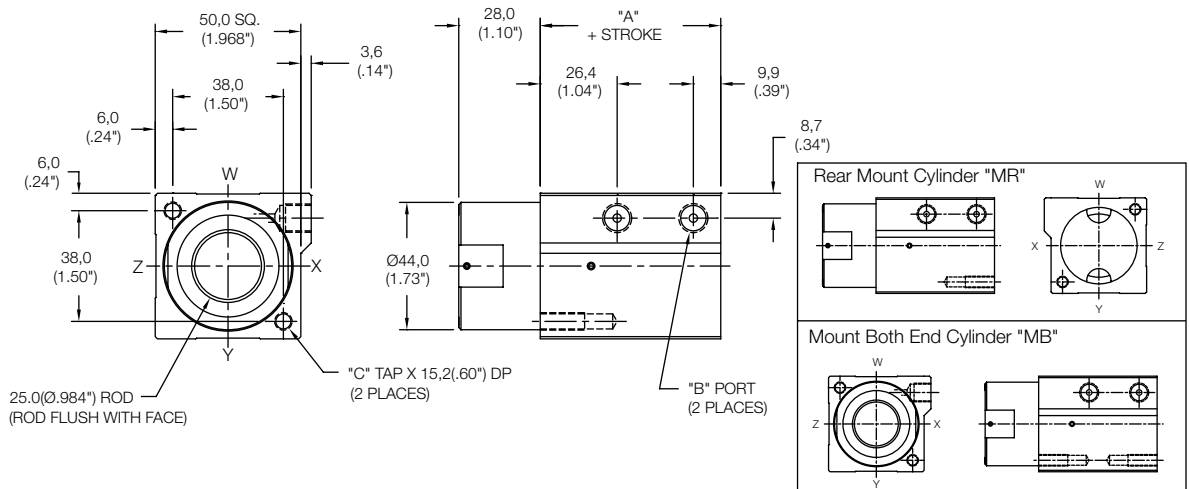
BLANK (NO CODE) - STANDARD "NO MAGNET" PISTON  
M - MAGNETIC PISTON AND SENSOR MOUNTING SLOTS

SENSORS SOLD SEPERATELY  
SKS, SKP, SCS, SCP - SOLID STATE  
LIMIT SENSORS  
(SEE PAGE 54 FOR DETAILS)

### Non Magnetic Front Mount Cylinder "MF"

MODEL	STANDARD STROKES	"A"	PISTON AREA
SC	20mm	47,0 (1.85")	PUSH 12,56 cm <sup>2</sup> (1.95 in <sup>2</sup> ) PULL 9,42 cm <sup>2</sup> (1.46 in <sup>2</sup> )
	25mm		
	30mm		

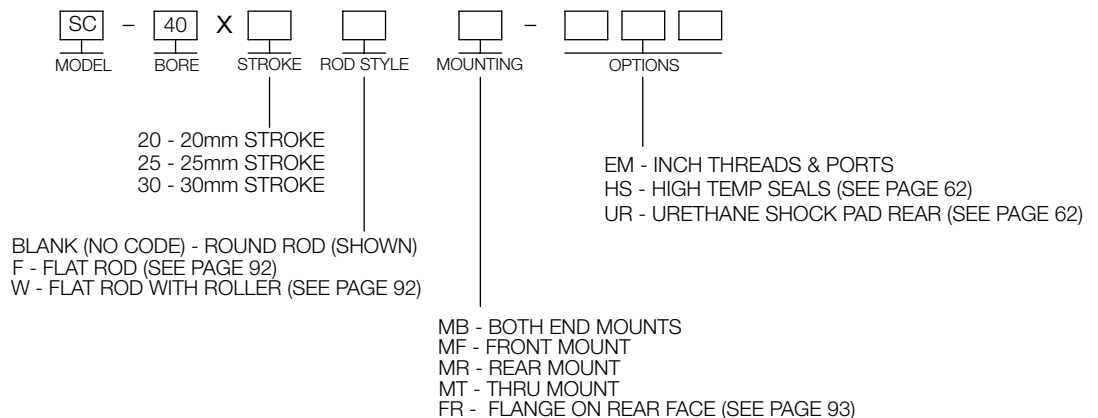
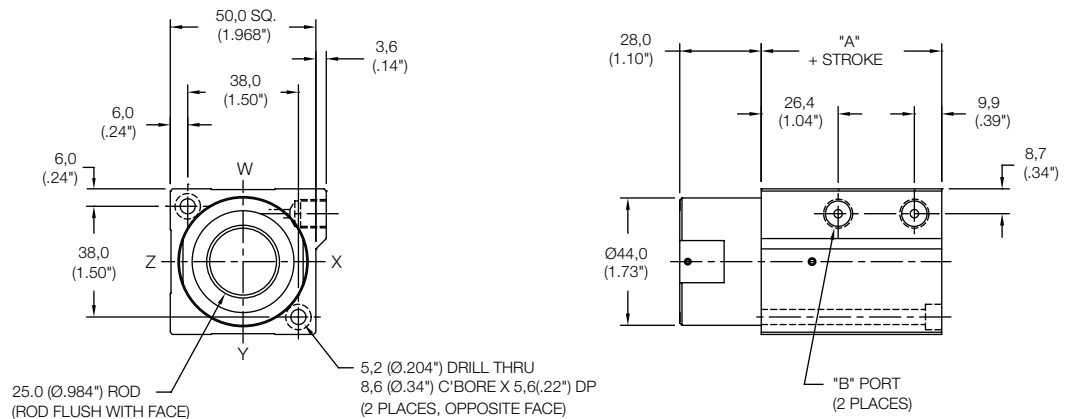
	Standard Threads	"EM" Option
"B"	G 1/8 PORT	1/8-27
"C"	M6X1,0	1/4-20



### Non Magnetic Thru Mount Cylinder "MT"

MODEL	STANDARD STROKES	"A"	PISTON AREA
SC	20mm	47,0 (1.85")	PUSH 12,56 cm <sup>2</sup> (1.95 in <sup>2</sup> ) PULL 9,42 cm <sup>2</sup> (1.46 in <sup>2</sup> )
	25mm		
	30mm		

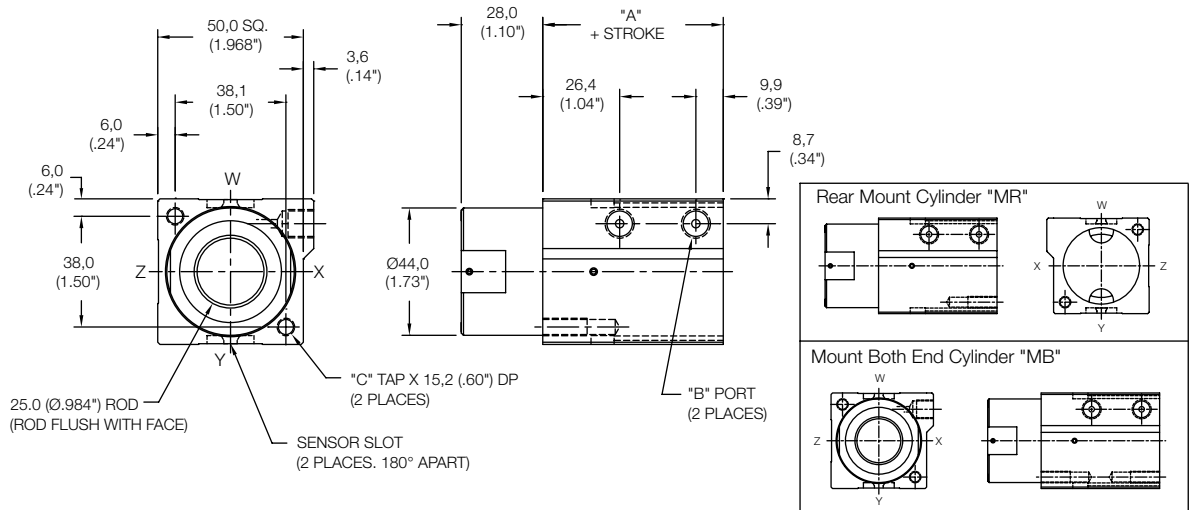
	Standard Threads	"EM" Option
"B"	G 1/8 PORT	1/8-27



### Magnetic Front Mount Cylinder "MF"

MODEL	STANDARD STROKES	"A"	PISTON AREA
SC	20mm	47,0 (1.85")	PUSH 12,56 cm <sup>2</sup> (1.95 in <sup>2</sup> ) PULL 9,42 cm <sup>2</sup> (1.46 in <sup>2</sup> )
	25mm		
	30mm		

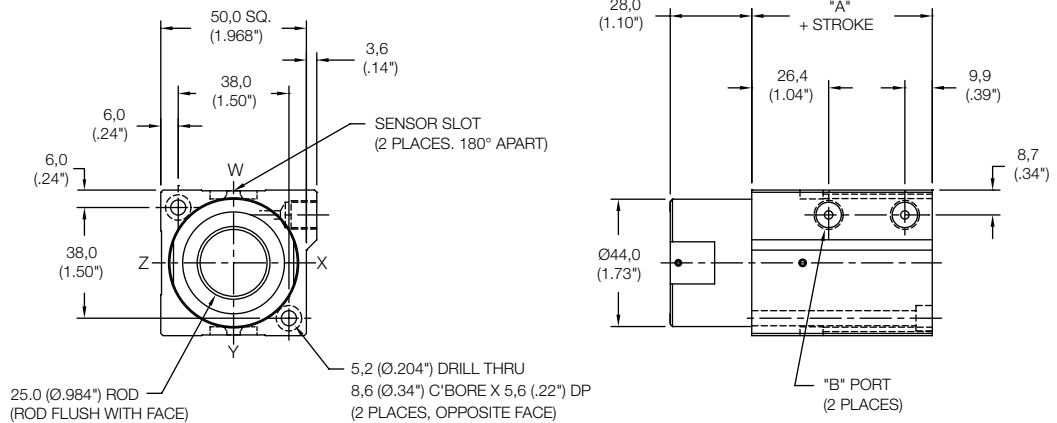
	Standard Threads	"EM" Option
"B"	G 1/8 PORT	1/8-27
"C"	M6X1,0	1/4-20



### Magnetic Thru Mount Cylinder "MT"

MODEL	STANDARD STROKES	"A"	PISTON AREA
SC	20mm	47,0 (1.85")	PUSH 12,56 cm <sup>2</sup> (1.95 in <sup>2</sup> ) PULL 9,42 cm <sup>2</sup> (1.46 in <sup>2</sup> )
	25mm		
	30mm		

	Standard Threads	"EM" Option
"B"	G 1/8 PORT	1/8-27



20 - 20mm STROKE  
25 - 25mm STROKE  
30 - 30mm STROKE

BLANK (NO CODE) - ROUND ROD (SHOWN)  
F - FLAT ROD (SEE PAGE 92)  
W - FLAT ROD WITH ROLLER (SEE PAGE 92)

EM - INCH THREADS & PORTS  
HS - HIGH TEMP SEALS (SEE PAGE 62)  
UR - URETHANE SHOCK PAD REAR (SEE PAGE 62)

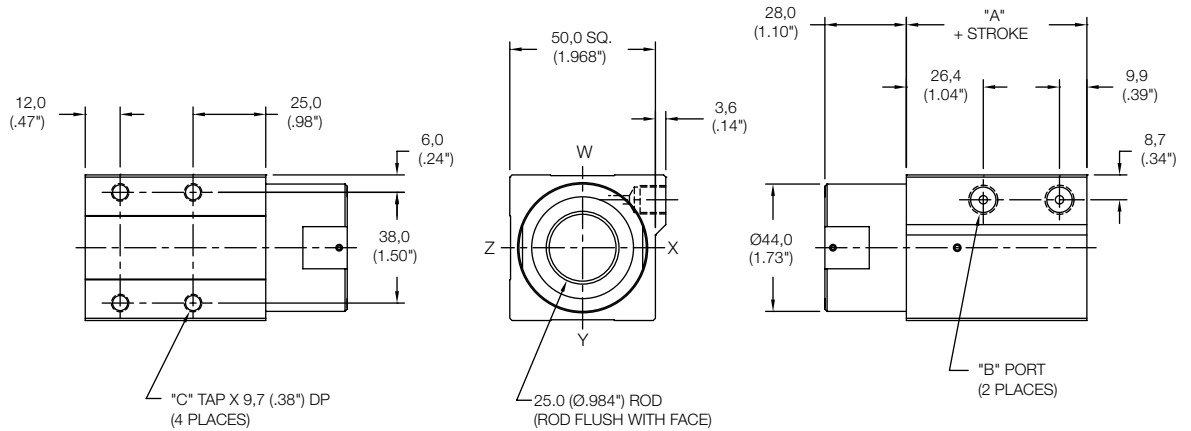
SENSORS SOLD SEPERATELY  
SKS, SKP, SCS, SCP - SOLID STATE  
LIMIT SENSORS  
(SEE PAGE 54 FOR DETAILS)

MB - BOTH END MOUNTS  
MF - FRONT MOUNT  
MR - REAR MOUNT  
MT - THRU MOUNT  
FR - FLANGE ON REAR FACE (SEE PAGE 93)

### Non Magnetic Side Mount Cylinder "MS"

MODEL	STANDARD STROKES	"A"	PISTON AREA
SC	20mm	47,0 (1.85")	PUSH 12,56 cm <sup>2</sup> (1.95 in <sup>2</sup> ) PULL 9,42 cm <sup>2</sup> (1.46 in <sup>2</sup> )
	25mm		
	30mm		

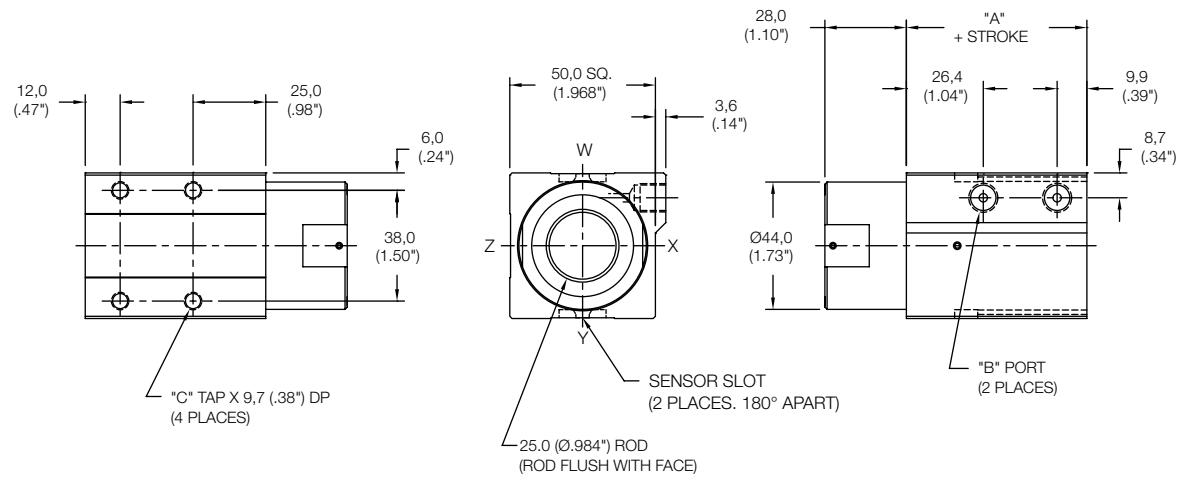
	Standard Threads	"EM" Option
"B"	G 1/8 PORT	1/8-27
"C"	M6X1,0	1/4-20



### Magnetic Side Mount Cylinder "MS"

MODEL	STANDARD STROKES	"A"	PISTON AREA
SC	20mm	47,0 (1.85")	PUSH 12,56 cm <sup>2</sup> (1.95 in <sup>2</sup> ) PULL 9,42 cm <sup>2</sup> (1.46 in <sup>2</sup> )
	25mm		
	30mm		

	Standard Threads	"EM" Option
"B"	G 1/8 PORT	1/8-27
"C"	M6X1,0	1/4-20



SC - 40 X       -      

MODEL      BORE      STROKE      ROD STYLE      MOUNTING      MAGNETIC      OPTIONS

20 - 20mm STROKE  
 25 - 25mm STROKE  
 30 - 30mm STROKE

MS - SIDE THREADS  
 FS - SIDE FLANGES (SEE PAGE 93)

EM - INCH THREADS & PORTS  
 HS - HIGH TEMP SEALS (SEE PAGE 62)  
 UR - URETHANE SHOCK PAD REAR (SEE PAGE 62)

BLANK (NO CODE) - ROUND ROD (SHOWN)  
 F - FLAT ROD (SEE PAGE 92)  
 W - FLAT ROD WITH ROLLER (SEE PAGE 92)

BLANK (NO CODE) - STANDARD "NO MAGNET" PISTON  
 M - MAGNETIC PISTON AND SENSOR MOUNTING SLOTS

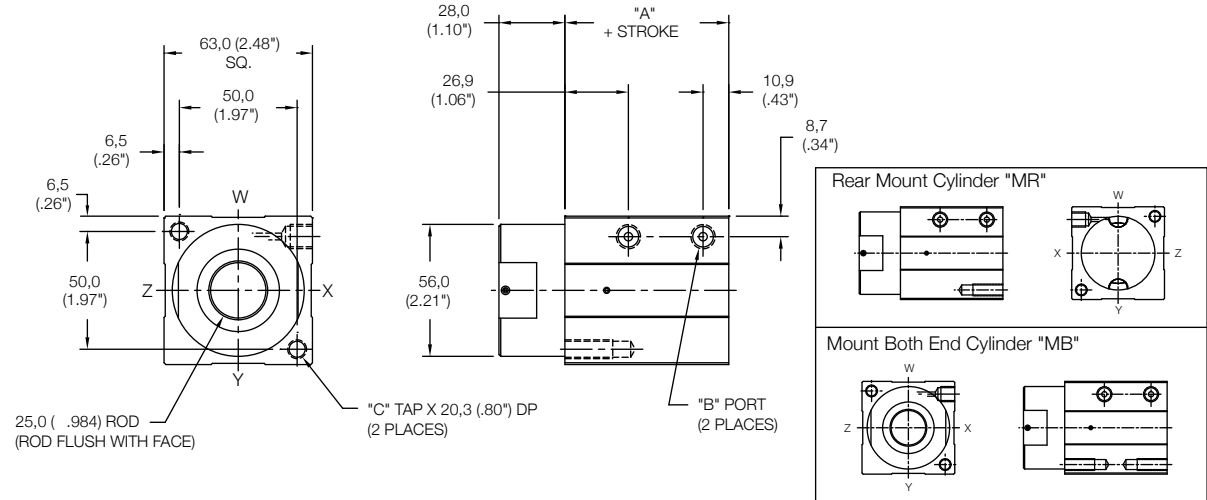
SENSORS SOLD SEPERATELY  
 SKS, SKP, SCS, SCP - SOLID STATE  
 LIMIT SENSORS  
 (SEE PAGE 54 FOR DETAILS)



**Non Magnetic Front Mount Cylinder "MF"**

MODEL	STANDARD STROKES	"A"	PISTON AREA
SC	20mm	49,5 (1.95")	PUSH 19,63 cm <sup>2</sup> (3.04 in <sup>2</sup> ) PULL 14,72 cm <sup>2</sup> (2.28 in <sup>2</sup> )
	25mm		
	30mm		

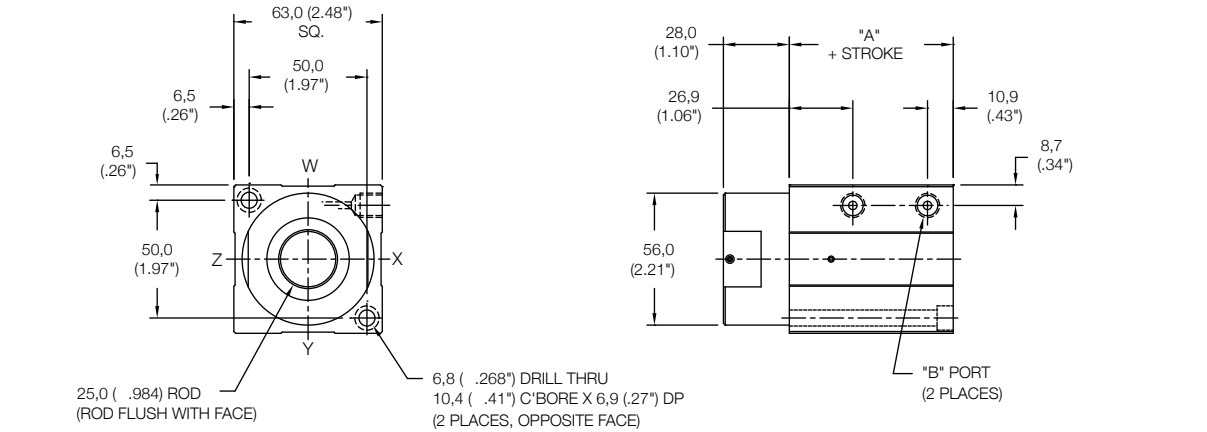
	Standard Threads	"EM" Option
"B"	G 1/8 PORT	1/8-27
"C"	M8X1,25	5/16-18



**Non Magnetic Thru Mount Cylinder "MT"**

MODEL	STANDARD STROKES	"A"	PISTON AREA
SC	20mm	49,5 (1.95")	PUSH 19,63 cm <sup>2</sup> (3.04 in <sup>2</sup> ) PULL 14,72 cm <sup>2</sup> (2.28 in <sup>2</sup> )
	25mm		
	30mm		

	Standard Threads	"EM" Option
"B"	G 1/8 PORT	1/8-27



SC - 50 X [ ] [ ] [ ] - [ ] [ ] [ ]

MODEL BORE STROKE ROD STYLE MOUNTING OPTIONS

20 - 20mm STROKE  
25 - 25mm STROKE  
30 - 30mm STROKE

BLANK (NO CODE) - ROUND ROD (SHOWN)  
F - FLAT ROD (SEE PAGE 92)  
W - FLAT ROD WITH ROLLER (SEE PAGE 92)

MB - BOTH END MOUNTS  
MF - FRONT MOUNT  
MR - REAR MOUNT  
MT - THRU MOUNT  
FR - FLANGE ON REAR FACE (SEE PAGE 93)

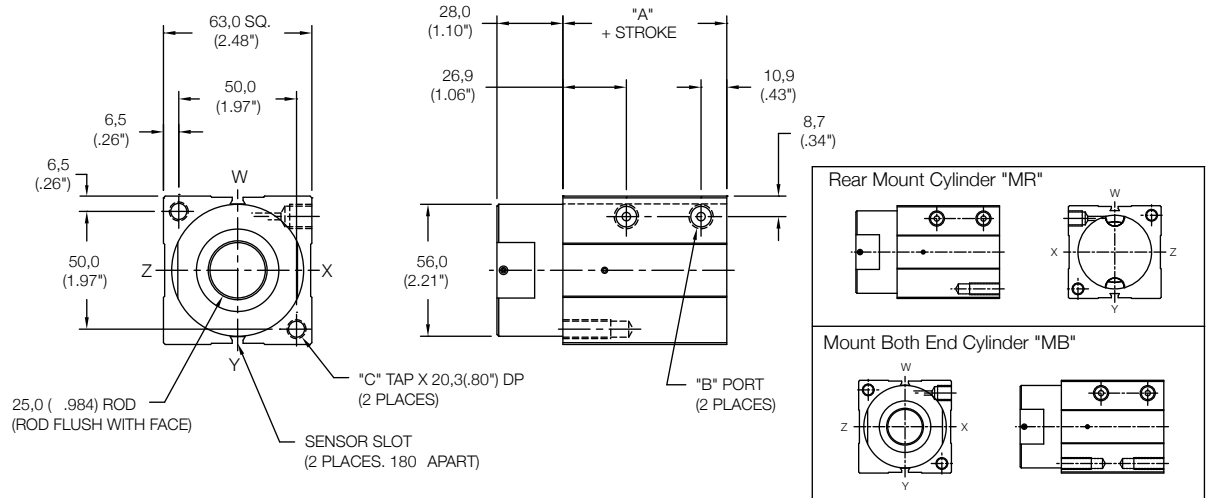
EM - INCH THREADS & PORTS  
HS - HIGH TEMP SEALS (SEE PAGE 62)  
UR - URETHANE SHOCK PAD REAR (SEE PAGE 62)

[www.comoso.com](http://www.comoso.com)

### Magnetic Front Mount Cylinder "MF"

MODEL	STANDARD STROKES	"A"	PISTON AREA
SC	20mm	49,5 (1.95")	PUSH 19,63 cm <sup>2</sup> (3.04 in <sup>2</sup> )
	25mm		PULL 14,72 cm <sup>2</sup> (2.28 in <sup>2</sup> )
	30mm		

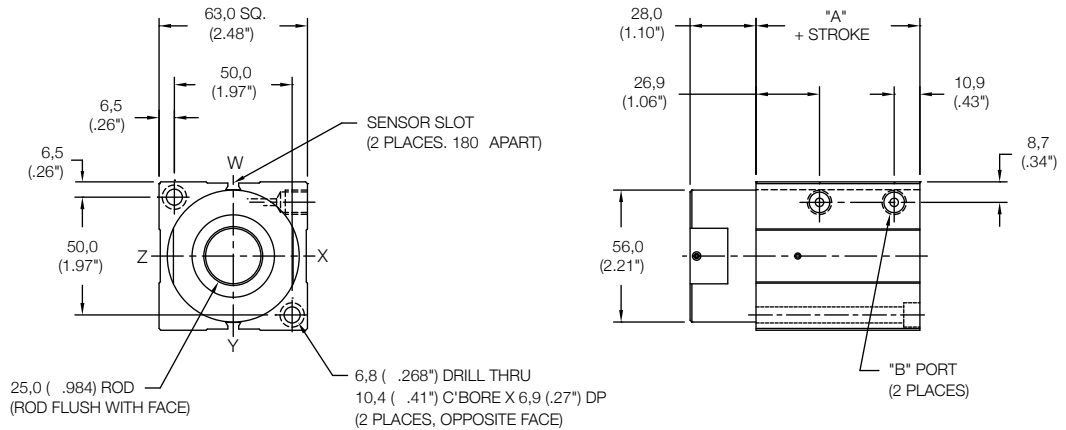
	Standard Threads	"EM" Option
"B"	G 1/8 PORT	1/8-27
"C"	M8X1,25	5/16-18



### Magnetic Thru Mount Cylinder "MT"

MODEL	STANDARD STROKES	"A"	PISTON AREA
SC	20mm	49,5 (1.95")	PUSH 19,63 cm <sup>2</sup> (3.04 in <sup>2</sup> )
	25mm		PULL 14,72 cm <sup>2</sup> (2.28 in <sup>2</sup> )
	30mm		

	Standard Threads	"EM" Option
"B"	G 1/8 PORT	1/8-27



SC - 50 X [ ] [ ] [ ] M - [ ] [ ] [ ]  
 MODEL BORE STROKE ROD STYLE MOUNTING MAGNETIC OPTIONS

20 - 20mm STROKE  
 25 - 25mm STROKE  
 30 - 30mm STROKE

BLANK (NO CODE) - ROUND ROD (SHOWN)  
 F - FLAT ROD (SEE PAGE 92)  
 W - FLAT ROD WITH ROLLER (SEE PAGE 92)

EM - INCH THREADS & PORTS  
 HS - HIGH TEMP SEALS (SEE PAGE 62)  
 UR - URETHANE SHOCK PAD REAR (SEE PAGE 62)

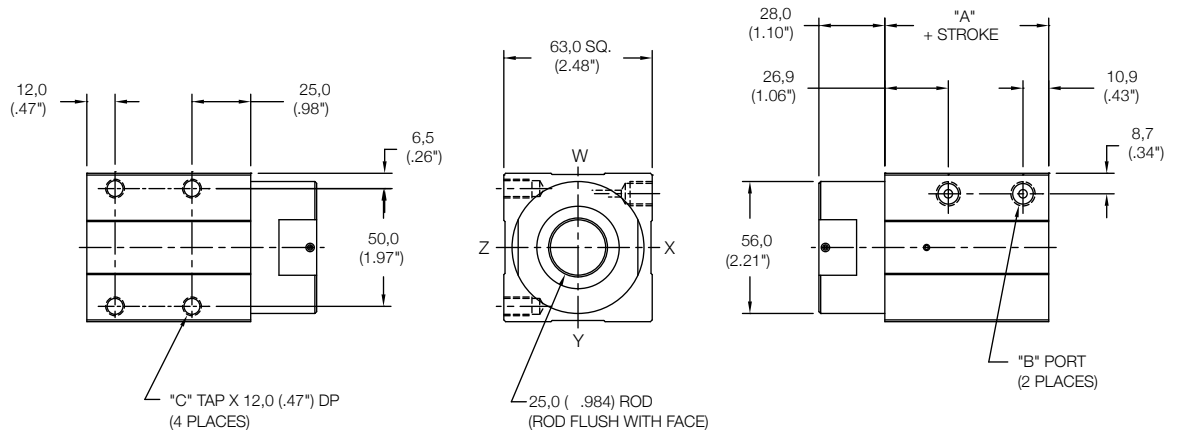
MB - BOTH END MOUNTS  
 MF - FRONT MOUNT  
 MR - REAR MOUNT  
 MT - THRU MOUNT  
 FR - FLANGE ON REAR FACE (SEE PAGE 93)

SENSORS SOLD SEPARATELY  
 SKS, SKP, SCS, SCP - SOLID STATE  
 LIMIT SENSORS  
 (SEE PAGE 54 FOR DETAILS)

### Non Magnetic Side Mount Cylinder "MS"

MODEL	STANDARD STROKES	"A"	PISTON AREA
SC	20mm	49,5 (1.95")	PUSH 19,63 cm <sup>2</sup> (3.04 in <sup>2</sup> ) PULL 14,72 cm <sup>2</sup> (2.28 in <sup>2</sup> )
	25mm		
	30mm		

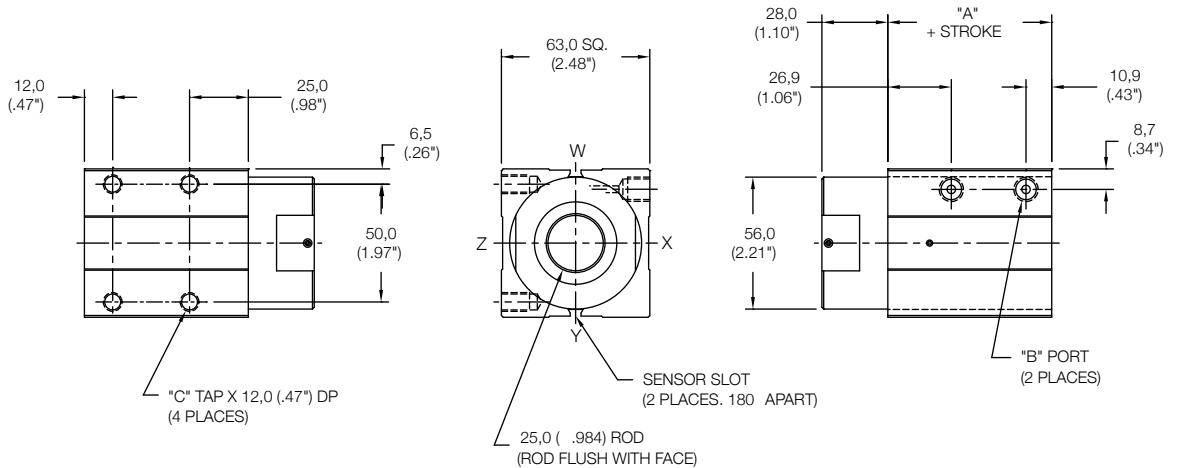
	Standard Threads	"EM" Option
"B"	G 1/8 PORT	1/8-27
"C"	M8X1,25	5/16-18



### Magnetic Side Mount Cylinder "MS"

MODEL	STANDARD STROKES	"A"	PISTON AREA
SC	20mm	49,5 (1.95")	PUSH 19,63 cm <sup>2</sup> (3.04 in <sup>2</sup> ) PULL 14,72 cm <sup>2</sup> (2.28 in <sup>2</sup> )
	25mm		
	30mm		

	Standard Threads	"EM" Option
"B"	G 1/8 PORT	1/8-27
"C"	M8X1,25	5/16-18



20 - 20mm STROKE  
25 - 25mm STROKE  
30 - 30mm STROKE

MS - SIDE THREADS  
FS - SIDE FLANGES  
(SEE PAGE 93)

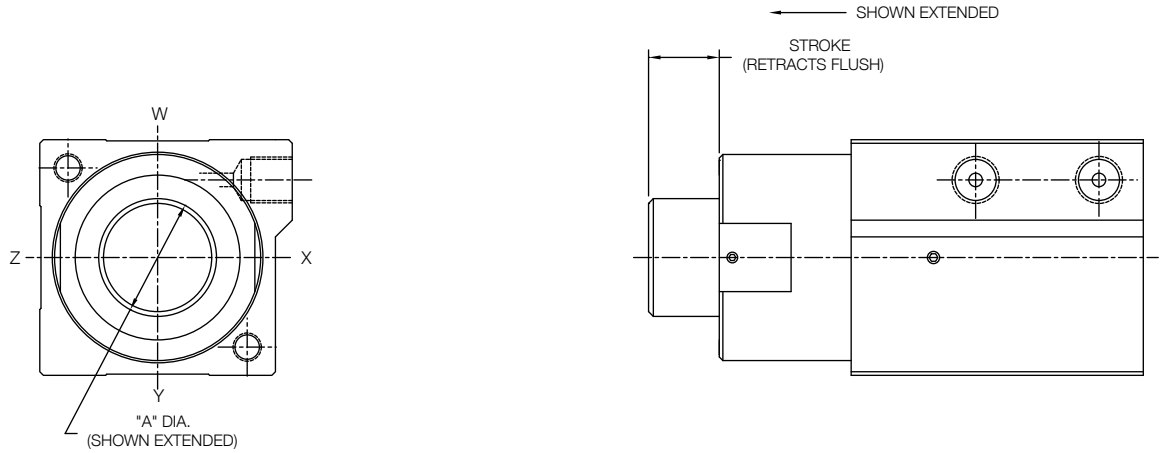
EM - INCH THREADS & PORTS  
HS - HIGH TEMP SEALS (SEE PAGE 62)  
UR - URETHANE SHOCK PAD REAR  
(SEE PAGE 62)

BLANK (NO CODE) - ROUND ROD (SHOWN)  
F - FLAT ROD (SEE PAGE 92)  
W - FLAT ROD WITH ROLLER (SEE PAGE 92)

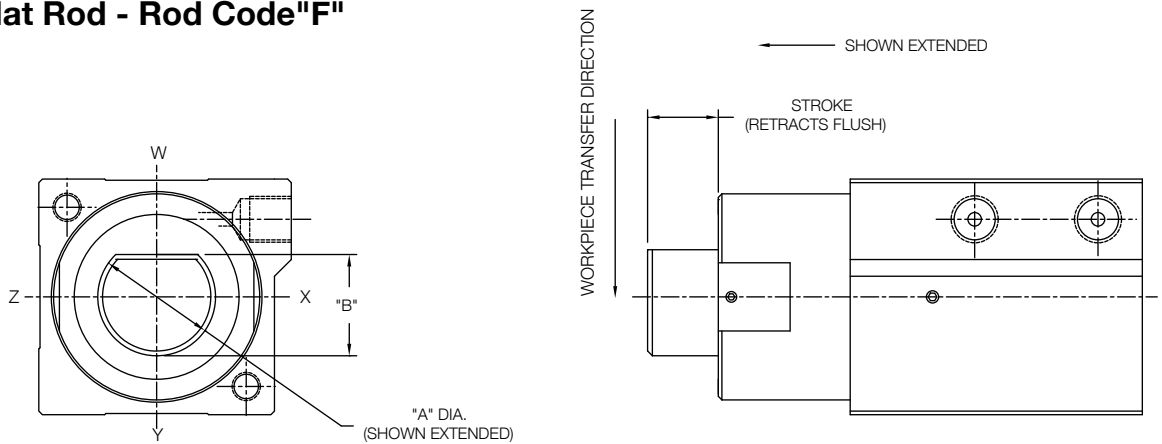
BLANK (NO CODE) - STANDARD "NO MAGNET" PISTON  
M - MAGNETIC PISTON AND SENSOR MOUNTING SLOTS

SENSORS SOLD SEPARATELY  
SKS, SKP, SCS, SCP - SOLID STATE  
LIMIT SENSORS  
(SEE PAGE 54 FOR DETAILS)

**Round Rod - Rod Code Blank (No Code)**

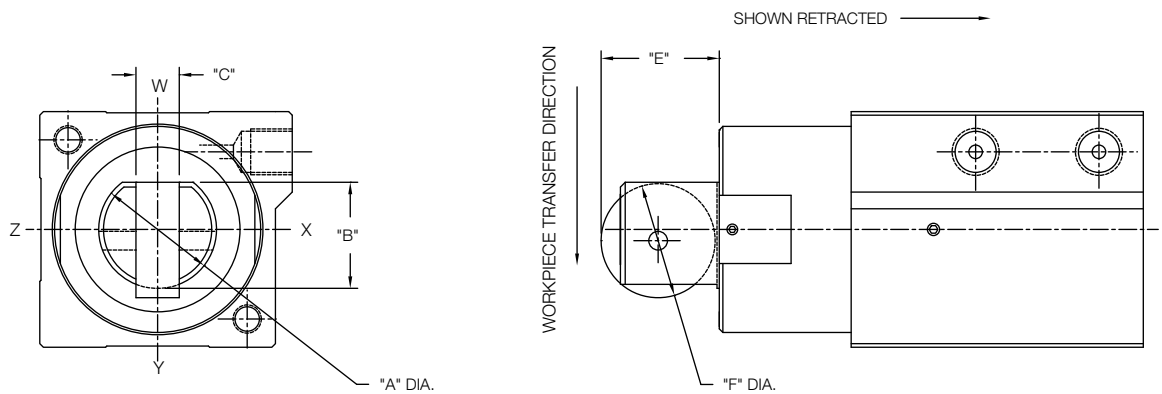


**Flat Rod - Rod Code "F"**



Standard orientation for flat is side "W". Flat can be reoriented to any position.

**Flat Rod With Roller - Rod Code - "W"**

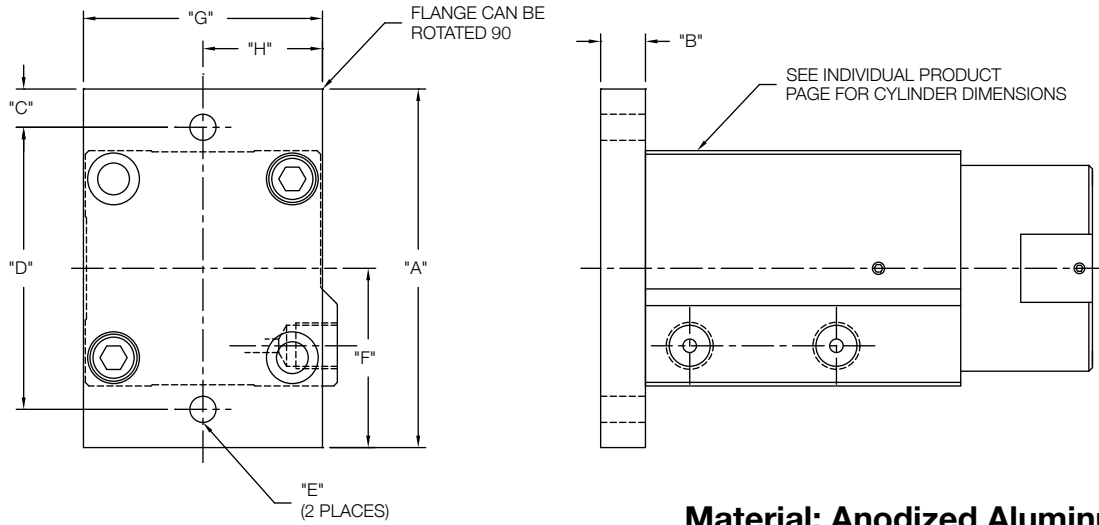


Standard orientation for flat is side "W". Flat can be reoriented to any position.

Bore	"A"	"B"	"C"	"D"	"E"	"F"
20	10,0(0.394")	8,0(0.315")	3,5 (.14")	6,35(0.25")	8,5 (0.33")	8,0 (0.32")
25	12,0(0.472")	10,0(0.394")	4,0(.16")	8,6(0.34")	11,0 (.43")	10,0 (0.39")
32	20,0(0.787")	18,0(0.709")	8,0 (.32")	17,0(0.67")	19,0 (.75")	18,0 (0.71")
40	25,0(0.984")	22,5(0.886")	9,0 (.35")	20,6(0.81")	25,0 (.98")	24,0 (0.95")
50	25,0(0.984")	22,5(0.886")	9,0 (.35")	20,6(0.81")	25,0 (.98")	24,0 (0.95")

- Rod shown extended on Round Rod and Flat Rod Styles  
 - Roller material: Plastic

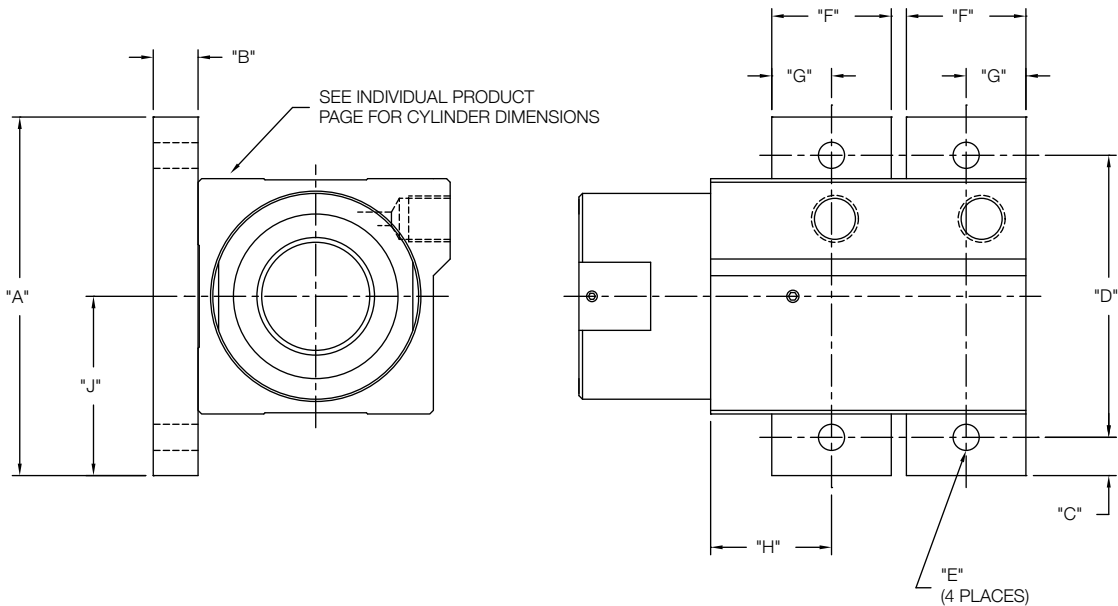
## Rear Face Flange Mount - "FR"



**Material: Anodized Aluminum**

Bore	"A"	"B"	"C"	"D"	"E"	"F"	"G"	"H"
20	50,8 (2.0")	9,5 (.38")	5,4 (.21")	40,0 (1.58")	4,5 (.18")	25,4 (1.0")	31,8 (1.25")	15,9 (.63")
25			3,9 (.15")	43,0 (1.69")			38,1 (1.50")	19,05 (.75")
32	63,5 (2.5")	9,5 (.38")	5,75 (.23")	52,0 (2.05")	5,5 (.22")	31,8 (1.25")	44,5 (1.75")	22,25 (.88")
40	76,2 (3.0")		8,1 (.32")	60,0 (2.36")			38,1 (1.50")	50,8 (2.00")
50	93,0 (3.66")	12,7 (.50")	7,5 (.30")	78,0 (3.07")	8,5 (.33")	46,5 (1.83")	63,5 (2.50")	31,8 (1.25")

## Side Flange Mount - "FS"



**Material: Anodized Aluminum**

Bore	"A"	"B"	"C"	"D"	"E"	"F"	"G"	"H"	"J"
20	50,8 (2.00")	9,5 (.38")	5,4 (.21")	40 (1.58")	4,5 (.18")	19 (.75")	9,5 (.38")	19,5 (.77")	25,4 (1.0")
25			3,9 (.15")	43 (1.69")				38,1 (1.50")	16,25 (.64")
32	63,5 (2.50")	9,5 (.38")	5,75 (.23")	52 (2.05")	5,5 (.22")	25,4 (1.00")	12,7 (.50")	16,25 (.64")	31,8 (1.25")
40	76,2 (3.00")		8,1 (.32")	60 (2.36")				38,1 (1.50")	38,1 (1.50")
50	93 (3.66")	12,7 (.50")	7,5 (.30")	78 (3.07")	8,5 (.33")			25,75 (1.01")	46,5 (1.83")

# NASON

NEW THINKING

1307 S Highway 11 • Walhalla SC 29691  
800.229.4955 • Phone: 864.638.9521  
Fax: 864.638.7903 • Orders: 800.229.4955  
[www.nasonptc.com](http://www.nasonptc.com)

#### WARRANTY:

It is the sole responsibility of the user to determine the suitability of any product or information supplied by Nason for any application or use by the user.

THE FOLLOWING IS IN LIEU OF ALL OTHER WARRANTIES, EXPRESS OR IMPLIED, INCLUDING THOSE OF MERCHANTABILITY AND FITNESS FOR A PARTICULAR PURPOSE.

The Nason Company warrants each product to be free from defects in material and workmanship under normal use and service. Nason's obligation under this warranty is limited to repairing or supplying, at our option, a part or parts to replace any defective part(s) within one (1) year from the date of original sale. Wear components including but not limited to seals, wear bands, and bearings are excluded from this warranty. No product will be returned without prior authorized approval. If authorized, the transportation charges are to be prepaid to The Nason Company, Walhalla, SC. Unauthorized returns will be returned freight collect. The provisions of this warranty will not apply to any part(s) which have been subject to misuse, negligence, or accident, or which have been repaired or altered outside of The Nason Company service department in any way so as in the judgement of Nason to adversely affect its performance, stability, or reliability. The Nason Company neither assumes nor authorizes anyone to assume for it any other obligation or liability for any loss or damage either direct, incidental or consequential resulting from or arising out of or in connection with any of its defective part(s). Nason will not be responsible for any labor or other charges in connection with the removal of a product deemed to be defective or for installation or replacement of a defective or repaired product. Buyer's sole remedies are as provided herein. In no event shall Nason be liable for any cost of Buyer's cover, or for any indirect, special, consequential, incidental, or punitive damages of any sort, whether based on tort or breach of contract and/or warranty.

Request Nason's catalog  
of custom engineered  
switches by calling toll  
free 800-229-4955 or  
visit our website at  
[www.nasonptc.com](http://www.nasonptc.com)

