

User Manual

# PRESSURE TRANSMITTERS

Series 621 and 622  
Explosion-proof



*(Factory Mutual and Canadian  
Standards Association Approved)*



APPROVED



© US

[www.noshok.com](http://www.noshok.com)

**NOSHOK**

## **General**

NOSHOK series 621 and 622 pressure transmitters are approved for use in hazardous location applications as follows:

Explosion-proof for Class I, Division 1, Groups A, B, C and D; Dust Ignition-proof for Class II and III, Division 1, Groups F and G. FM standards according to FMRC 3600, 3615 and 3810 and 3810. ANSI/ISA-12.27.01-2003 Approved single seal.

These transmitters must be installed and operated according to NEC and local codes. Improper installation or modifications to the electrical connection will void the hazardous approval rating.

### **Installation and commissioning**

NOSHOK series 621 and 622 transmitters are supplied with a 1/2" NPT Male conduit connection with either a 6' jacketed cable or 6' free leads. Series 621 and 622 transmitters meet the requirements of a single seal device as defined by ANSI/ISA 12.27.01-2003.

Series 621 has threaded process connections and model 622 has G1/2B or G1B flush diaphragm connections. Refer to the catalog for complete specifications. Do not torque the process connector with a force greater than 37 foot pounds. Dust tight conduit seals must be used when installed in Class II and Class III installations.

For the 4 mA to 20 mA output version, install the power supply, transmitter and receiving instrument in a series circuit to form a 2 wire loop. The transmitter regulates the current in the loop.

The transmitter is classified for over-voltage category II and the pollution degree 1. For the voltage output version, the 3 wire system uses separate leads for the power supply and output signal. The 3rd lead is a common minus. Use a NEC Class 02 power supply, low voltage and low current maximum 100 VA even under fault conditions.

NOSHOK series 621 and 622 explosion-proof pressure transmitters require no maintenance. They are calibrated at the factory using pressure standards traceable to N.I.S.T. There are no user available adjustments.

**4 mA to 20 mA  
2-wire**

WIRE	COLOR
+Supply	RED
+Output	BLACK

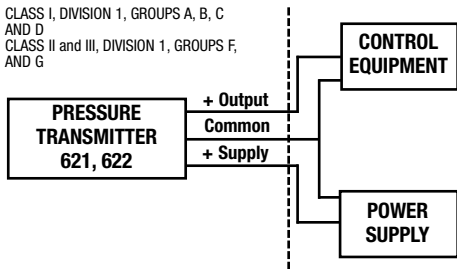
**Voltage Output  
3-wire**

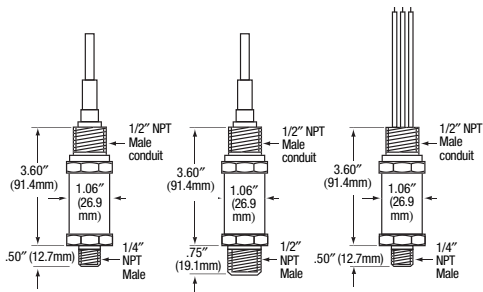
WIRE	COLOR
+Supply	RED
Common	BLACK
+Output	BROWN

**HAZARDOUS (CLASSIFIED)  
LOCATION**

CLASS I, DIVISION 1, GROUPS A, B, C  
AND D  
CLASS II and III, DIVISION 1, GROUPS F,  
AND G

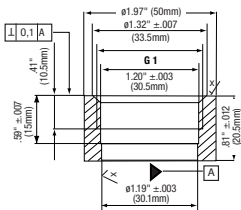
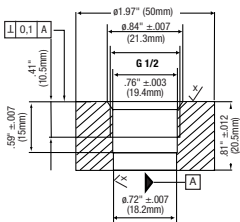
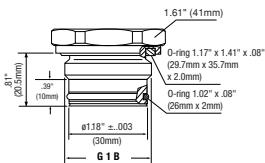
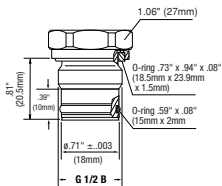
**NON-HAZARDOUS  
LOCATION**





For ranges 0 psi to 30 psi and higher

For ranges less than 0 psi to 30 psi



For ranges 0 psi to 30 psi and higher

For ranges less than 0 psi to 30 psi

The  
Instrumentation  
Company

## CORPORATE HEADQUARTERS

1010 West Bagley Road  
Berea, Ohio 44017

440.243.0888

440.243.3472 Fax

E-mail: [noshok@noshok.com](mailto:noshok@noshok.com)

Web: [www.noshok.com](http://www.noshok.com)

**NOSHOK**  
INCORPORATED

NUMEP04-2

[www.comoso.com](http://www.comoso.com)