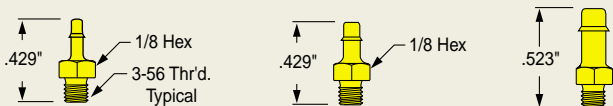


3-56 Male Thread to Tube Fibre Gasket Supplied



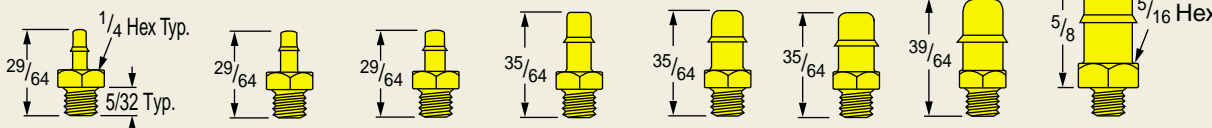
3-56B1\*

3-56B2\*

3-56B3\*

137

6-32 Male Thread to Tube Fibre Gasket Supplied



6-32B1\*

6-32B2\*

6-32B2<sup>1/2</sup>\*

6-32B3

6-32B3<sup>1/2</sup> (4mm)

6-32B4

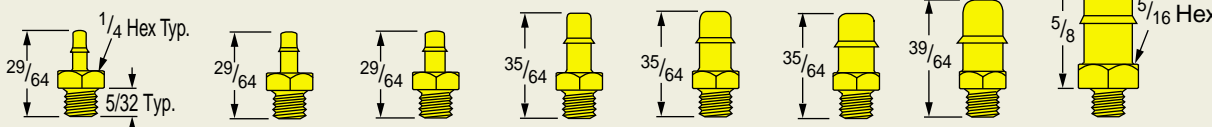
6-32B5

6-32B6

6-32B7-0 (8mm) 138

NEW  
6-32B7-0  
Not Shown

8-32 Male Thread to Tube Fibre Gasket Supplied



8-32B1\*

8-32B2\*

8-32B2<sup>1/2</sup>\*

8-32B3

8-32B3<sup>1/2</sup> (4mm)

8-32B4

8-32B5

8-32B6

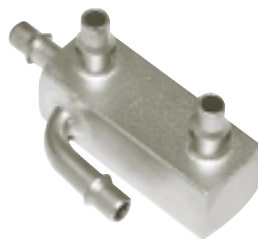
8-32B7-0 (8mm) 139

NEW  
8-32B7-0  
Not Shown

**No one else in the world will make the specials that Mem-co Makes!**



1/8" male thread to an extended #6 barbs, stainless steel



Stainless steel manifold, four #4 barb tube-to-tube connections



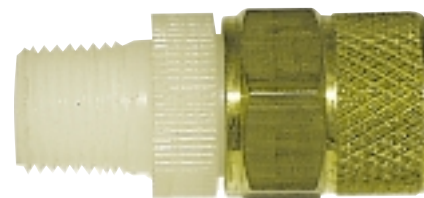
Tube-to-tube manifold, #6 inlet to #3 outlets, electroless nickel plated brass



Unique manifold, 1/2" male inlet to nine #2 barbs, electroless nickel plated brass



Special manifold, 1/8" female inlet, two 10-32 female outlets, six #3 barb outlets, and one #10 outlet; electroless nickel plated brass



PTF Series, 1/4" male thread (Delrin®) to tube (brass)

**May we help with your special requirements?**