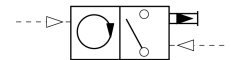
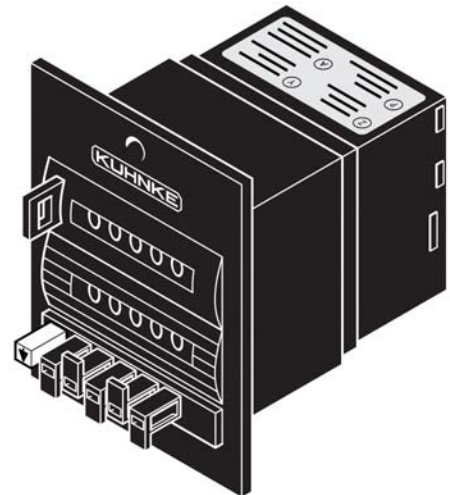


Panel Mounted Pneumatic Predetermining Counter

50680

Counter is used for selecting the number of desired operations on a production run. The number of operations is set on the lower scale by holding down a white button and setting the count to be reached. The upper scale is a 5 digit totalizer. When the count reaches the lower scale setting, a built-in 3 way valve is switched to provide a pneumatic output to stop machine or signal that the count has been reached. Valve remains switched until counter is reset.

The counter operates with an impulse pressure between 30-115 PSI and can be reset either manually via a reset button or by a pneumatic signal to a specially provided port.



Technical Specifications

Op. Pressure:

30-115 PSI

Connection:

10-32 (M5) ports

Display:

Black with white digits
(5 numbers)

Reset:

Manual button on cover or
pneumatic signal of
180 ms duration.

Media:

Filtered air

Control Connections:

Port Z - Counter pulse input

Port Y - Reset

Port P - Supply air to 3 way valve

Port A - Output signal from valve

Duty Cycle:

Continuous

Min. pulse duration 8 ms

Min. pause 10 ms

Operating Ambient:

0°C to +60°C (32°F to 140°F)

Weight:

4 ozs.

Materials:

Molded body

Dimensions:

Face plate: 2 3/8" W x 3" H

Behind panel: 2 1/2" Deep x

2" Wide x 2" High

Panel Cut Out:

2 1/16" Square

2 mounting holes required.

Hardware included.