

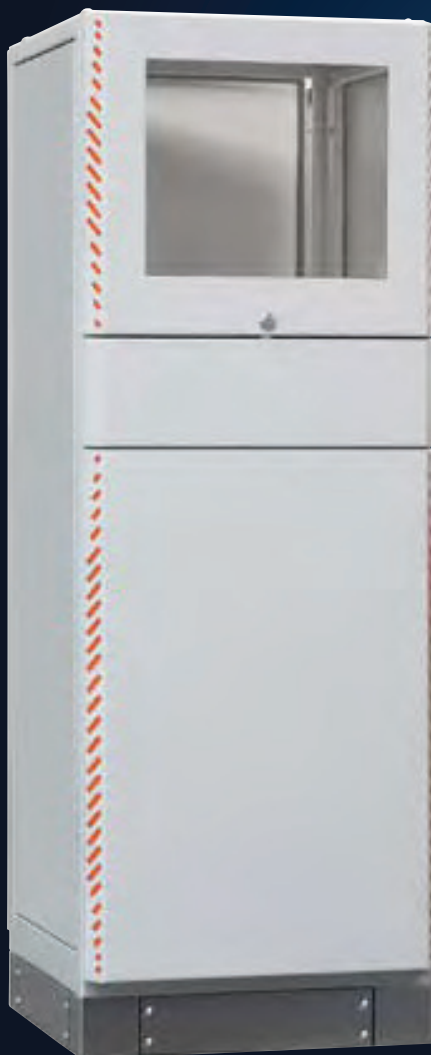
PC-Cabinet

Versatility and Design

The PC-cabinet type 2096 is another example of hāwa's proven design capabilities.

The slim appearance combined with high functionality is perfect for many applications in the public and industrial sector.

Available in mild steel powder-coated or stainless steel.



Accessibility:

Side panels and top secured from the inside

Central lock for complete front;
back door lockable

Ergonomics:

Window for monitors up to 21"

Keyboard drawer features wooden hand rest device

Usable height in lower part: 18 HU

Safety:

Protection class IP 55 (NEMA 12) – is also achieved with open drawer

Easy to install:

Unlocking of front door behind keyboard drawer

Cable entry with cable bearer to keyboard via removable cover in the back

Terminal block as transfer point



PC-Cabinet

PC-Cabinet 2096

Features

- Free-standing
- User-friendly characteristics
- Customizable through a variety of options

Product Description

PC-cabinet, completely lockable. With window for monitors up to 21". With wooden palm rest.

Technical Data

- Grounding per DIN EN 60439-1, grounding studs M8x20 / M6x16 on all moving and removable parts, as well as top and bottom panels.
- Vertical rails with 25 mm hole pattern

- Internal side panels and detachable top, mounted from inside
- Central disconnect system of the whole front side
- Viewing door with PC-Lexan window, screen size 410 x 351 mm
- Lower door
- Keyboard drawer, lockable; max. dimensions of keyboard L=500 x B=195 x H=55 mm; also with storage box
- Keyboard drawer cover at rear, with cable entry and cable support
- Standard protection class IP55, corresponds to NEMA 12

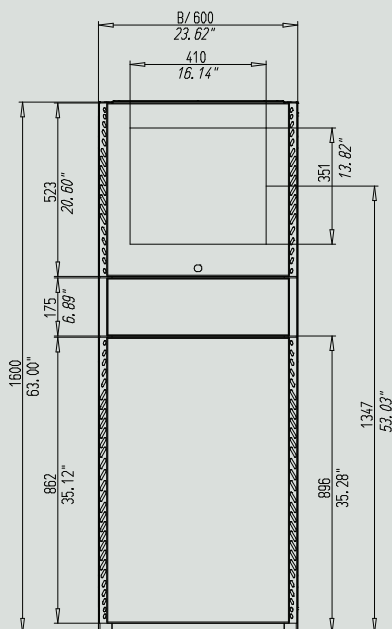
- Rear door with bar lock and 3 mm double mandrel bolt

Note

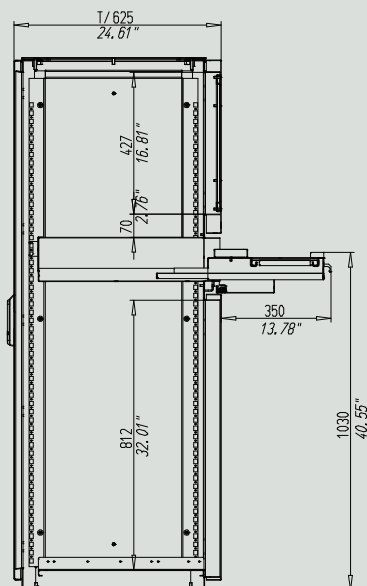
1800 mm high cabinet offers additional 6 HU beneath monitor.

Dimensions (WxHxD)		Weight		Order No.
mm	inch	kg	lbs	
600 x 1,600 x 600	23.62 x 62.99 x 23.62	115	253.58	2096-6016-60-07
600 x 1,800 x 625	23.62 x 70.87 x 24.61	123	271.22	2096-6018-60-07

Technical Information

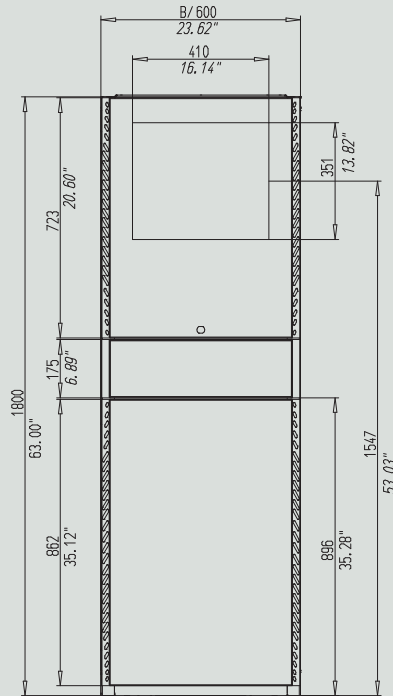


Front view

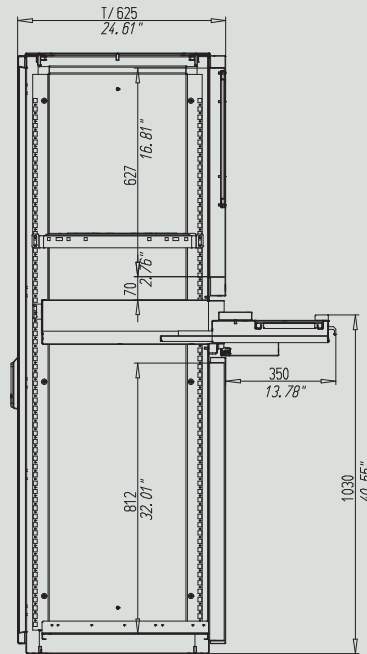


Side view

PC-Cabinet 2096, H-62.99"



Front view

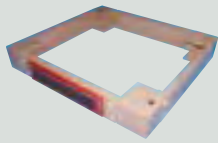


Side view

PC-Cabinet 2096, H-1800 mm

Accessories

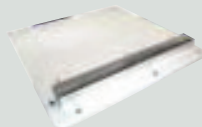
Base for PC-Cabinet 2096 Details → page 198

	Description	Dimensions		suitable for width		suitable for depth		Order No.
		mm	inch	mm	inch	mm	inch	
	All panels are detachable, one panel with cable entry and brush-strip.	600 x 100 x 550	23.62 x 3.94 x 21.65	600	23.62	625	24.61	0396.6001.60.27

Base Details → page 198

		Dimensions		suitable for width		suitable for depth		Order No.
		mm	inch	mm	inch	mm	inch	
		600 x 100 x 550	23.62 x 3.94 x 21.65	600	23.62	625	24.61	0396-6001-60-17

Top panel with rubber clamping Details → page 115

	Description	Order No.
	Can be substituted for top plate or top cable entry plate. For easier cable entry into the cabinet. Suitable for H390/H395/PC-cabinet 2096: W x D: 600 x 600 mm	
		0396-7060-62-77