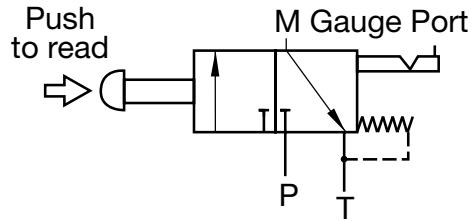


# HYDAC Gauge Isolators

## MA Series Single Gauge Isolator



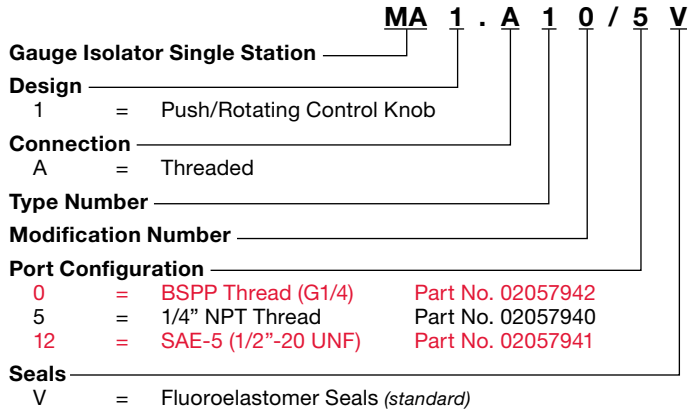
### Hydraulic Symbol



### Description

- Gauge life is extended by using the MA 1 when reading pressure. When not reading pressure, the gauge is vented to tank to protect the gauge against pressure from the system.
- There are two ways to operate the MA 1:  
Push to read (*spring return*)  
Push and rotate clockwise to lock in for continuous pressure reading

### Model Code



Model Codes containing selections listed in RED italics are non-standard items – Minimum quantities will apply  
Contact HYDAC for information and availability

Not all combinations are available

### Specifications

#### Mounting

- Panel installation maximum 0.39"

#### Connections

- 1/4" NPT, SAE-5, or G1/4 (Ports M, P, T)

#### Weight

- 0.88 lbs./0.4 kg

#### Mounting Position

- Horizontal or Vertical

#### Operating Fluid

- Mineral Oils

### Hydraulic Data

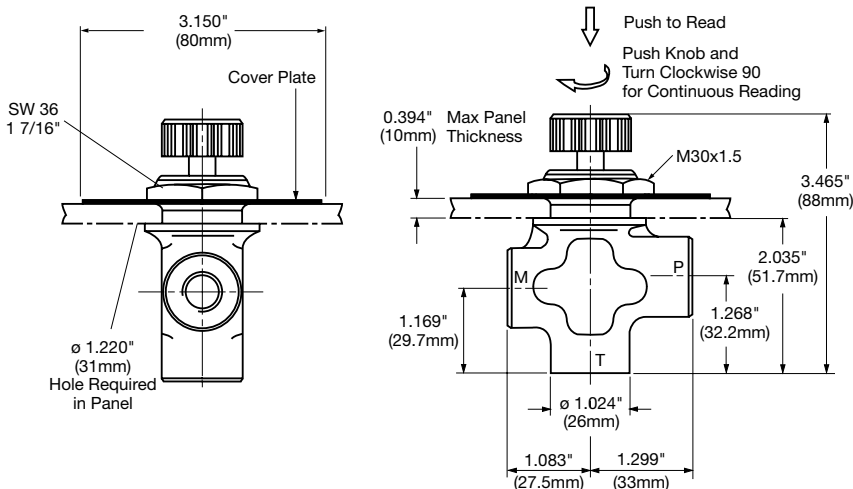
#### Operating Pressure

- P max. 5075 psi/350 bar (T-Port max. 145 psi/10 bar)

#### Temperature Range

- -4° to 176°F (-20° to 80°C)

### Dimensions



Dimensions are for general information only, all critical dimensions should be verified by requesting a certified print.  
Dimensions are in inches/(mm) and lbs./kg.