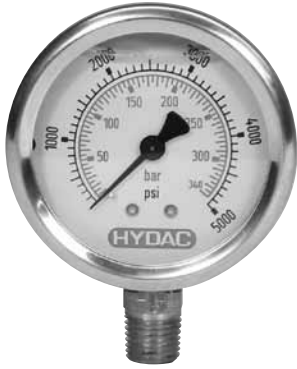


HYDAC | Gauges and Split Flanges

Gauges

2 1/2 inch face - 1/4" NPT Connection



Specifications

Accuracy: ±1.5% of span
Scale: PSI outside in black
 BAR inside in red
Connection: 1/4" NPT male

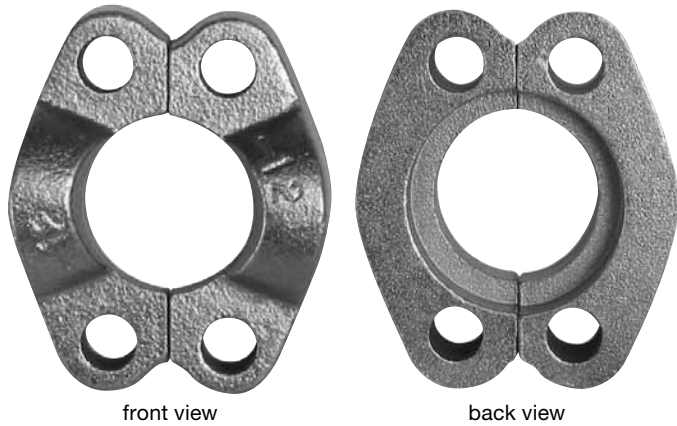
Materials

Case: Stainless Steel
Ring: Polished SS, crimped
Wetted Parts: Copper Alloy
Window: Polycarbonate
Dial: White ABS
Pointer: Black Aluminum
Liquid Filling: Glycerine

Model Code	Part Number	Pressure Range	Connection - 1/4" NPT
HPG-63-1000-LM	02701547	0 to 1000 psi	Lower Mount (LM)
HPG-63-1500-LM	02701548	0 to 1500 psi	Lower Mount (LM)
HPG-63-2000-LM	02701549	0 to 2000 psi	Lower Mount (LM)
HPG-63-3000-LM	02701550	0 to 3000 psi	Lower Mount (LM)
HPG-63-5000-LM	02701551	0 to 5000 psi	Lower Mount (LM)
HPG-63-2000-CBM	02701552	0 to 2000 psi	Center Back Mount (CBM)

Split Flanges

SAE Code 61 & 62



front view

back view

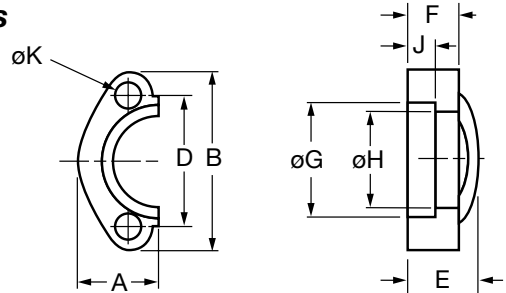
Materials

- Plated Carbon Steel
- Stainless Steel

Pressure Rating

- Code 61: 3000 psi
- Code 62: 5000 psi

Dimensions



Code 61 Split Flanges (sold in pairs - each pair makes a single connection)

Size	Part Number (Carbon Steel)	Part Number (Stainless Steel)	A	B	D	E	F	ØG	ØH	J	ØK
0.50	02701585	02701539	0.86	2.12	1.50	0.75	0.50	1.22	0.96	0.245	0.344
0.75	02055588	02701540	0.98	2.56	1.88	0.88	0.56	1.53	1.27	0.245	0.406
1.00	02055704	02700970	1.11	2.75	2.06	0.94	0.62	1.78	1.52	0.295	0.406
1.25	02055715	02701541	1.39	3.12	2.31	0.88	0.56	2.03	1.72	0.295	0.469
1.50	02055720	02700919	1.58	3.69	2.75	1.00	0.62	2.41	2.00	0.295	0.531
2.00	02055735	02701542	1.86	4.00	3.06	1.03	0.62	2.84	2.47	0.355	0.531

Code 62 Split Flanges (sold in pairs - each pair makes a single connection)

Size	Part Number (Carbon Steel)	Part Number (Stainless Steel)	A	B	D	E	F	ØG	ØH	J	ØK
0.50	02701585	02701537	0.89	2.22	1.59	0.88	0.62	1.28	0.97	0.285	0.344
0.75	02055882	02700540	1.14	2.81	2.00	1.12	0.75	1.66	1.28	0.325	0.406
1.00	02055883	02700916	1.33	3.19	2.25	1.31	0.94	1.91	1.53	0.355	0.469
1.25	02055889	02701538	1.48	3.75	2.63	1.50	1.06	2.16	1.75	0.385	0.531
1.50	02055890	02700544	1.83	4.44	3.13	1.69	1.19	2.53	2.03	0.475	0.656
2.00	02055891	02700847	2.20	5.25	3.81	2.06	1.44	3.16	2.66	0.475	0.781

Model Codes containing selections listed in RED italics are non-standard items – Minimum quantities will apply – Contact HYDAC for information and availability
 Not all combinations are available

Dimensions are for general information only, all critical dimensions should be verified by requesting a certified print.
 Dimensions are in inches.