

HYDAC

INTERNATIONAL

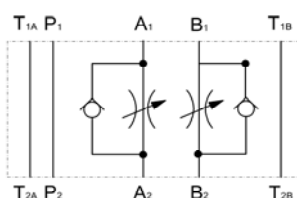


Needle Valve with reverse flow check Sandwich plate type ZW-SDR10

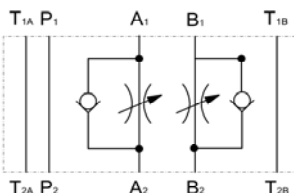
up to 350 bar
up to 100 l/min

SYMBOL

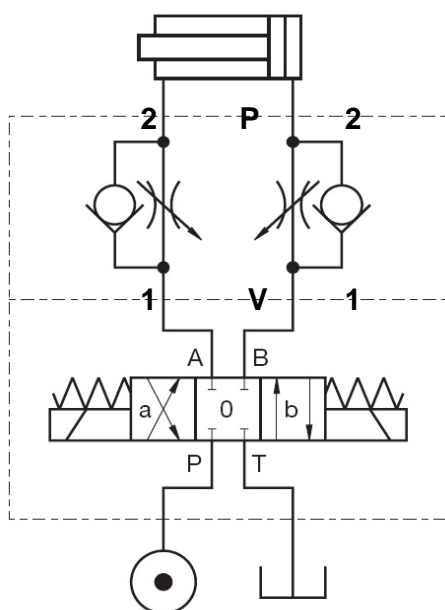
ZW-SDR10 AAB



ZW-SDR10 ZAB



Function



FEATURES

- Hole pattern to DIN 24340, ISO 4401, nominal size 10
- Adjustable needle valve with reverse flow check as sandwich plate housing to throttle in one direction and free backflow in the opposite direction
- easy to assemble under body mounted spool valves to DIN 24340, ISO 4401 (use longer screws)
- type to ISO 7790
- adjustable by tool

Types

- type AAB / ZAB:

The sandwich plate valve can be changed from downstream throttle to upstream throttle by turning through 180° (s. dimensions).

SPECIFICATIONS

Nominal pressure:	max. 350 bar
Cracking pressure:	0,4 bar
Nominal flow:	max. 100 l/min
Fluids:	Hydraulic fluid to DIN 51524 part 1 and 2
Media operating temp. range:	-20°C up to max. +70°C
Ambient temperature range:	-20°C up to max. +50°C
Viscosity range:	15 – 380 mm ² /s is recommended
Filtration:	Class 20/18/15 to ISO 4406 or cleaner
Weight:	3,3 kg incl. valve

PERFORMANCE

measured at $v = 32 \text{ mm}^2/\text{s}$ and $T_{\text{oil}} = 50^\circ \text{C}$

