

# Chelsea® 812 Series

8-Bolt Heavy Duty  
One Gear Mechanical P.T.O.



## Overview:

The Chelsea 812 P.T.O. is another example of why Chelsea P.T.O. technology is the best in the business. This economical workhorse features a cast iron housing. Chelsea's single gear P.T.O. designs have been a mainstay of our products since 1945. Chelsea was the first to provide you with an integrated air shift option on a single gear P.T.O. The 812 Series has 5 shift options, 4 output options, including Chelsea's popular 360° rotatable flange. Torque capacity of 400 Lbs. ft. P.T.O. make this one versatile P.T.O. Take advantage of over 65 years of Chelsea P.T.O. technology to increase performance and lower costs.

- Dump Trucks
- Tow and Recovery
- Aerial Devices



## Product Features and Benefits:

### Contact Information:

Parker Hannifin Corporation  
**Chelsea Products Division**  
8225 Hacks Cross Road  
Olive Branch, MS 38654 USA

**Phone: 1-888-PH4-TRUK**  
**(1-888-744-8785)**

**Fax: 1-662-895-1069**  
**chelseacustserv@parker.com**

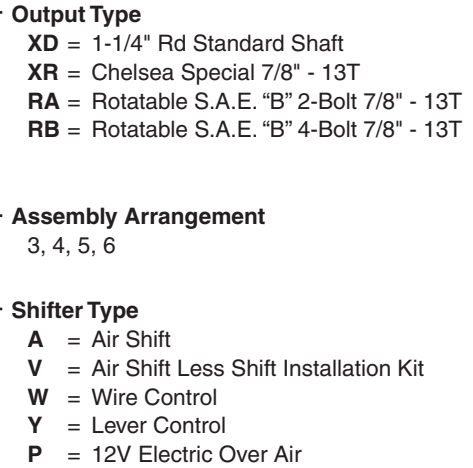
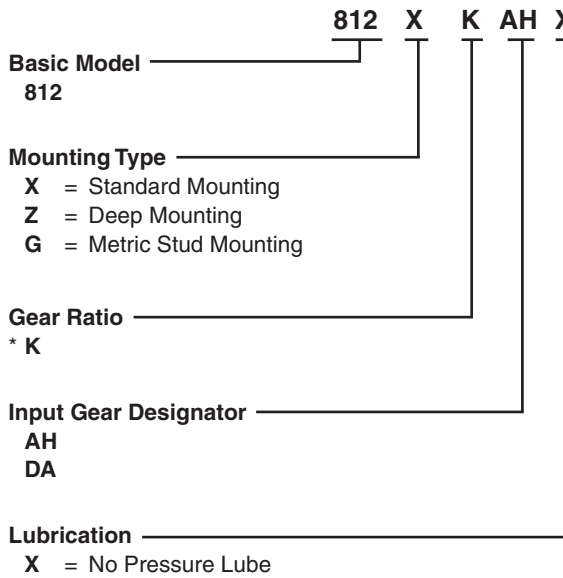
[www.parker.com/chelsea](http://www.parker.com/chelsea)

- Only single gear 8-Bolt P.T.O. in the industry
- High torque for extra heavy duty applications
- Ideal for Chelsea 912 Series split shaft applications
- Rotatable pump flanges available
- Five (5) Shift options
- Four (4) Output options
- Two Year Warranty

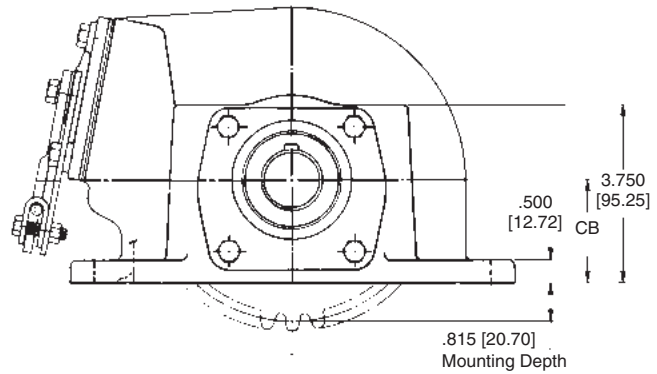
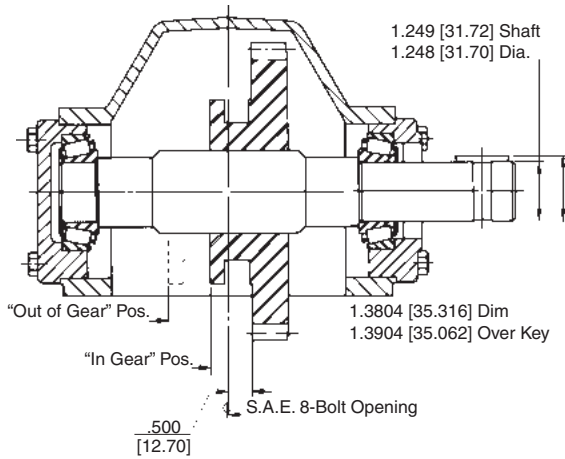


ENGINEERING YOUR SUCCESS.

# Model Number Designator



**\*NOTE:** See Transmission application page for final output speed.



## Series Specifications Chart – 812 Series

|  | <b>812R</b>        |
|--|--------------------|
| Standard Output Shaft Size                 | 1-1/4" Round w/key |
| Intermittent Torque Rating (Lbs. ft.)      | 400                |
| Intermittent Torque Rating (N.m.)          | 542                |
| Horsepower Rating for Intermittent Service |                    |
| At 500 R.P.M. of Output Shaft (HP)         | 38                 |
| At 1000 R.P.M. of Output Shaft (HP)        | 76                 |
| At 500 R.P.M. of Output Shaft (Kw)         | 28                 |
| At 1000 R.P.M. of Output Shaft (Kw)        | 57                 |
| Approximate Weight:                        | 50 lbs. [22.7 kg]  |

