

Chelsea® 800 Series

Heavy Duty Single Gear Powershift P.T.O.



Overview:

The Chelsea 800 P.T.O. is another example of why Chelsea P.T.O. technology is the best in the business. This 8-Bolt Powershift is a workhorse in the Chelsea P.T.O. line. It features a cast iron housing and heavy duty ball bearings on the output shaft. The large clutch pack provide you with a torque rating up to 500 Lbs. ft. providing you with a long service life in heavy duty applications. The output shaft features a 1-1/8" round shaft, 4 shift options and our Electric Overspeed Control (E.O.C.) option make this one versatile P.T.O. Take advantage of over 65 years of Chelsea P.T.O. technology to increase performance and lower costs.

- Oil Field Application
- Bulk Transporter Trucks
- Fire and Rescue



Product Features and Benefits:

Contact Information:

Parker Hannifin Corporation
Chelsea Products Division
8225 Hacks Cross Road
Olive Branch, MS 38654 USA

Phone: 1-888-PH4-TRUK
(1-888-744-8785)

Fax: 1-662-895-1069
chelseacustserv@parker.com

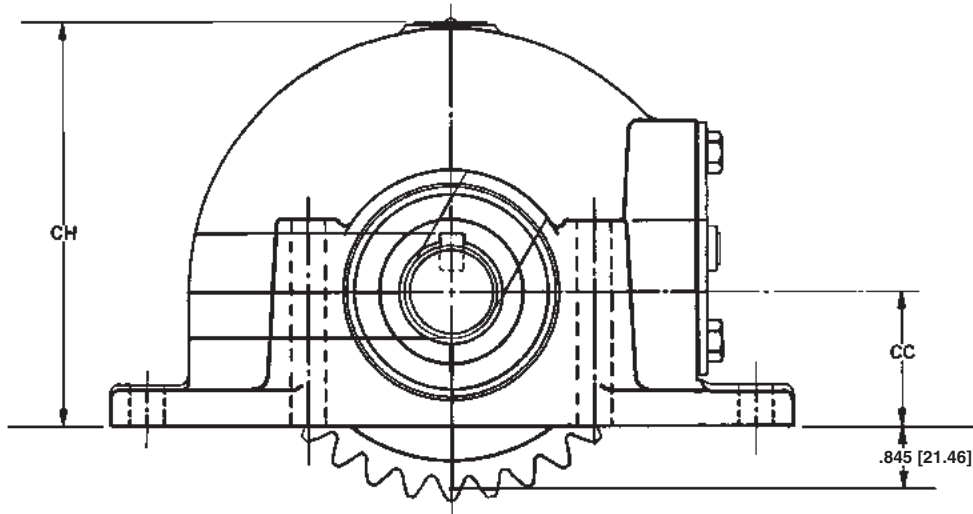
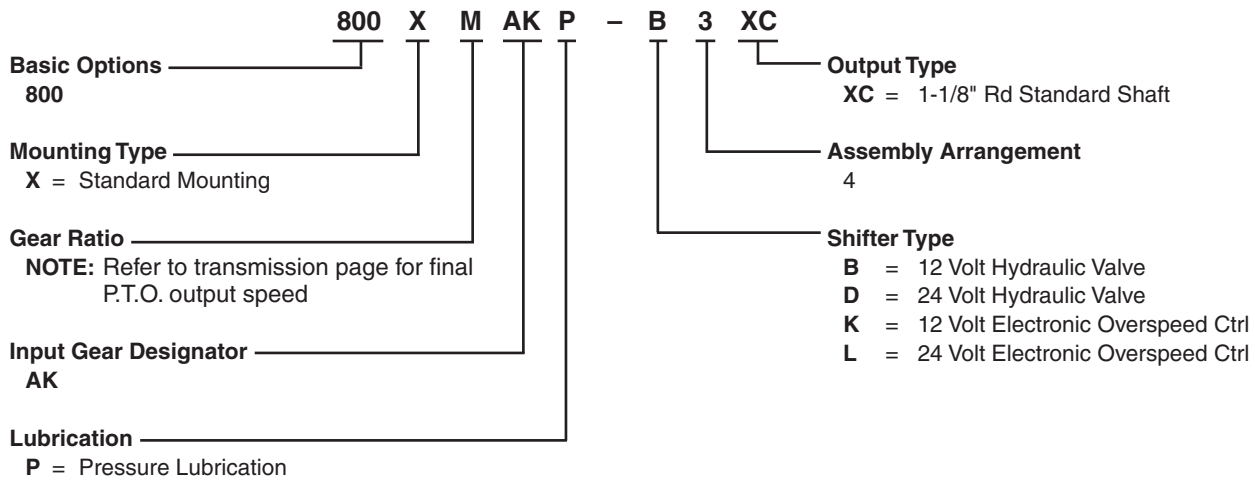
www.parker.com/chelsea

- Only Single Gear Powershift P.T.O. on the market today
- Compact size makes it a good solution when space is limited
- Electric-Over-Hydraulic shifting
- Pressure Lubrication standard
- Two Year Warranty



ENGINEERING YOUR SUCCESS.

Model Number Designator



Series Specifications Chart – 238 Series

	800*M
Standard Output Shaft Size	1-1/8" Round w/key
Intermittent Torque Rating (Lbs. ft.)	250
Intermittent Torque Rating (N.m.)	339
Horsepower Rating for Intermittent Service	
At 500 R.P.M. of Output Shaft (HP)	24
At 1000 R.P.M. of Output Shaft (HP)	48
At 500 R.P.M. of Output Shaft (Kw)	18
At 1000 R.P.M. of Output Shaft (Kw)	36
Approximate Weight:	38 lbs. [17 kg]