

# Chelsea® 236 Series

Air shifted Powershift P.T.O.  
for Mechanical and Automatic Transmissions



## Overview:

The 236 Series now gives you the ability to mount a Powershift P.T.O. directly on a mechanical transmission as you have done for years with the 442 Series mechanical. This provides the operator a smooth engagement with no gear clashing which helps extend the life of the P.T.O. and transmission gears. Using the same popular gear design as our 442 Series, the 236 Series will become standard for applications requiring a 6-Bolt Powershift P.T.O. The 236 Series feature 4 internal speed ratios, 5 shift options and 12 output options. Twenty three input gear options will provide you with coverage on Fuller, Mack, Spicer/TTC transmissions to name a few. One of the more popular features available for the 236 Series is the internal self adjusting shaft brake. This prevents shaft rotation on devices such as water or transfer pumps when the P.T.O. is disengaged.

- LP Gas Trucks
- Water Trucks
- Fire and Rescue



## Contact Information:

Parker Hannifin Corporation  
**Chelsea Products Division**  
8225 Hacks Cross Road  
Olive Branch, MS 38654 USA

**Phone: 1-888-PH4-TRUK**  
**(1-888-744-8785)**

**Fax: 1-662-895-1069**  
**chelseacustserv@parker.com**

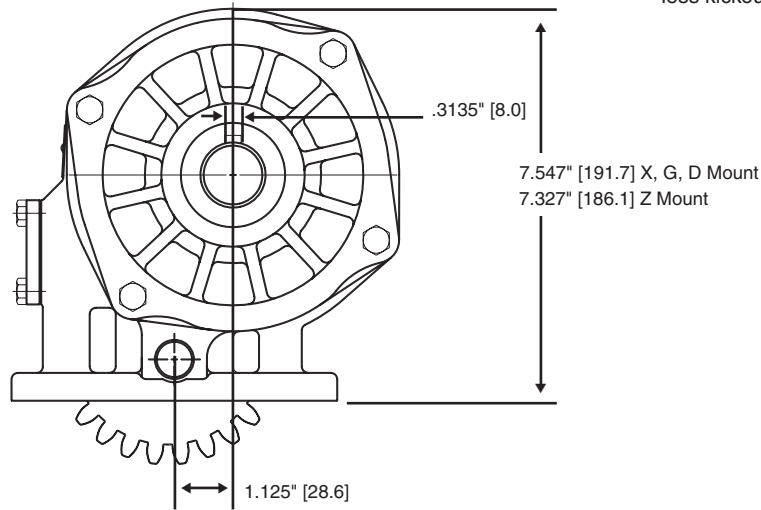
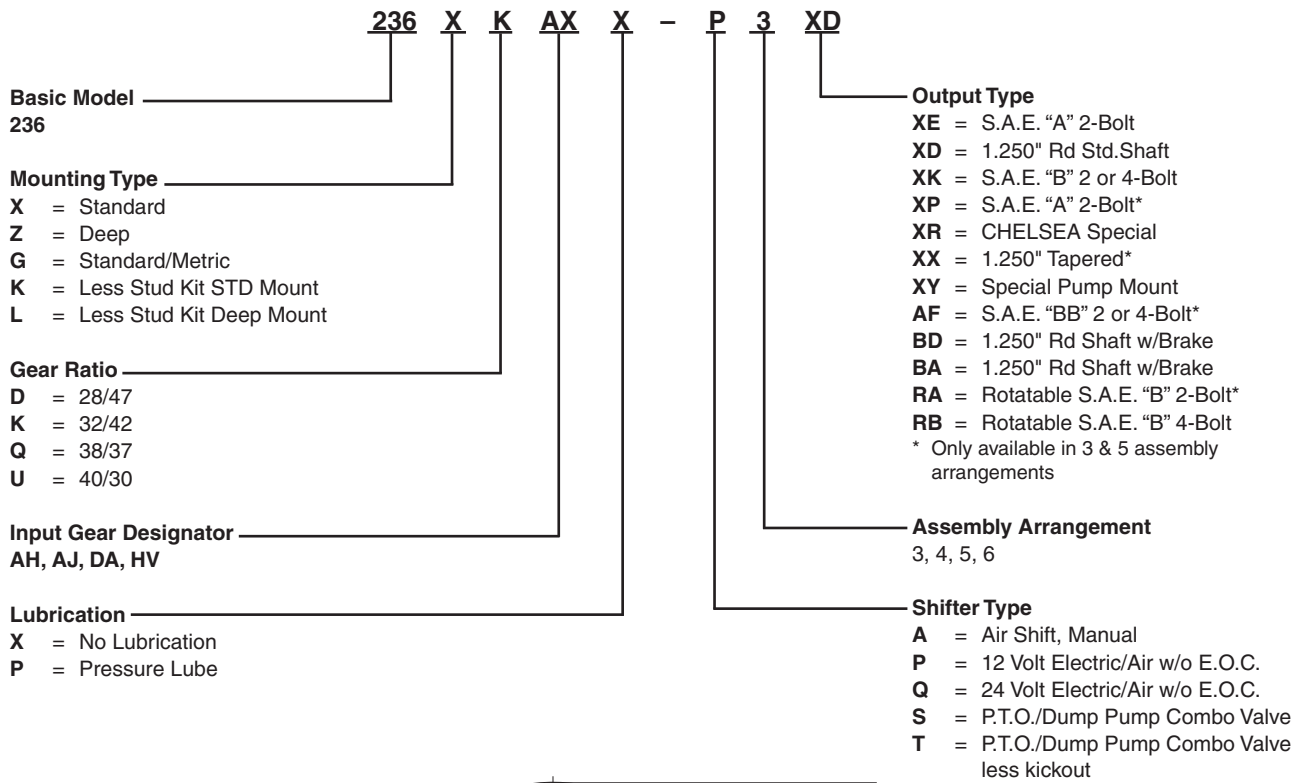
[www.parker.com/chelsea](http://www.parker.com/chelsea)

## Product Features and Benefits:

- Internal self adjusting shaft brake option (patent #7159701)
- Wide selection of input gears for virtually all currently produced transmissions
- Helical gears and optional pressure lubrication to extend P.T.O. service life
- Inspection cove for adjusting backlash
- P.T.O./Dump Pump combo valve shift option available
- Two Year Warranty



# Model Number Designator



## Series Specifications Chart – 236 Series

	236*D, K & Q	236*U
Standard Output Shaft Size	—— 1-1/4" Round w/key ——	
Intermittent Torque Rating (Lbs. ft.)	250	225
Intermittent Torque Rating (N.m.)	339	305
Horsepower Rating for Intermittent Service		
At 500 R.P.M. of Output Shaft (HP)	24	21
At 1000 R.P.M. of Output Shaft (HP)	48	43
At 500 R.P.M. of Output Shaft (Kw)	18	16
At 1000 R.P.M. of Output Shaft (Kw)	36	32
Approximate Weight:	—— 49 lbs. [22 kg] ——	

