

# Chelsea® 230 Series

Air Shifted Powershift P.T.O. for Mechanical and Automatic Transmissions



## Overview:

The 230 Series now gives you the ability to mount a Powershift P.T.O. directly on a mechanical transmission as you have done for years with the 442 Series mechanical P.T.O. This provides the operator a smooth engagement with no gear clashing which helps extend the life of the P.T.O. and transmission gears. The 230 Series features 5 internal speed ratios, 8 shift options and 12 output options. The 230 Series features an option for protecting your driven equipment. This is our Electronic Overspeed Control (E.O.C.). This feature prevents the driver from going down the road with the P.T.O. engaged preventing cavitations on hydraulic equipment. Another popular feature available for the 230 Series is the internal self adjusting shaft brake. This prevents shaft rotation on devices such as water or transfer pumps when the P.T.O. is disengaged.

- LP Gas Trucks
- Water Trucks
- Fire and Rescue
- Aerial Devices
- Dump Truck & Trailers
- Snow and Ice Removal

## Contact Information:

Parker Hannifin Corporation  
**Chelsea Products Division**  
8225 Hacks Cross Road  
Olive Branch, MS 38654 USA

**Phone: 1-888-PH4-TRUK**  
**(1-888-744-8785)**

**Fax: 1-662-895-1069**  
**chelseacustserv@parker.com**

[www.parker.com/chelsea](http://www.parker.com/chelsea)



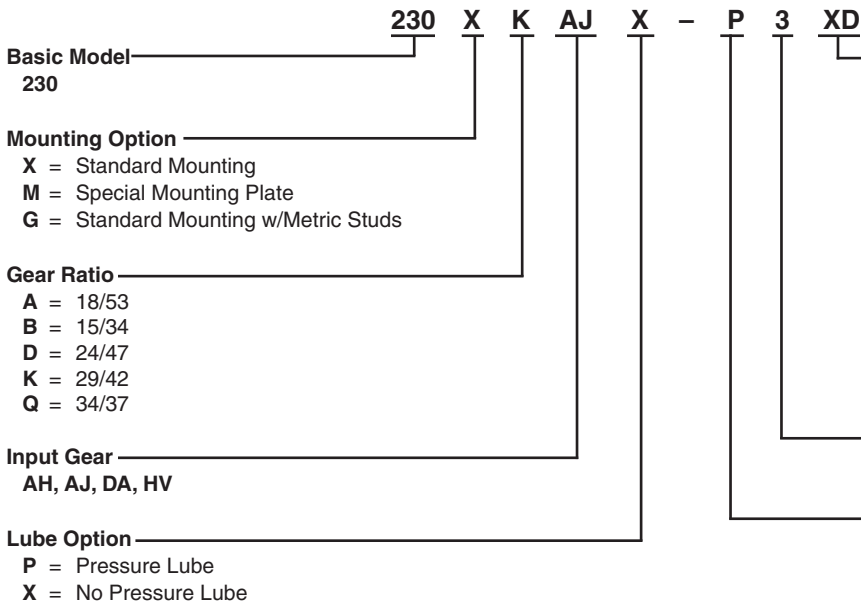
## Product Features and Benefits:

- Designed for both Manual and Automatic transmissions
- Electric-over-air shifting
- Pressure lubrication option available for both units
- Internal self adjusting shaft brake option (patent #7159701)
- P.T.O./Dump pump combo valve shift option available
- Two Year Warranty
- Electronic Overspeed Control

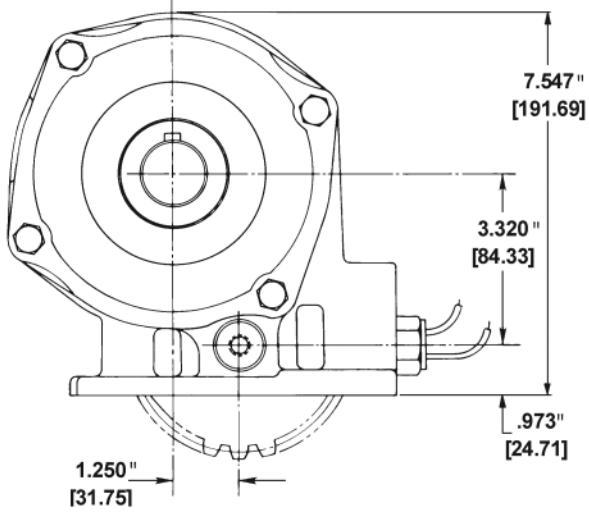


ENGINEERING YOUR SUCCESS.

# Model Number Designator



- Output Option**  
 XD = 1-1/4" Rd Standard Shaft  
 XE = S.A.E. "A" 2 or 4-Bolt 5/8" - 9T  
 XK = S.A.E. "B" 2 or 4-Bolt 7/8" - 13T  
 \* XP = S.A.E. "A" 2-Bolt 7/8" - 13T  
 XR = Chelsea Special 7/8" - 13T  
 \* XX = Tapered Output Shaft  
 XY = DIN 5462 8T  
 \* AF = S.A.E. "BB" 2 or 4-Bolt 1" - 15T  
 \* RA = Rotatable S.A.E. "B" 2-Bolt 7/8" - 13T  
 RB = Rotatable S.A.E. "B" 4-Bolt 7/8" - 13T  
 BD = 1-1/4" Round Shaft w/Brake  
 BA = 1-1/4" Round Shaft w/Brake
- Assembly Arrangement**  
3, 4, 5, 6
- Shift Option**  
 \*\* A = Manual Air Shift  
 \*\* P = 12 Volt Electric Over Air  
 \*\* Q = 24 Volt Electric Over Air  
 N = 12V Electronic Overspeed Ctrl  
 J = 24V Electronic Overspeed Ctrl  
 S = P.T.O. & Combo Valve  
 T = P.T.O. & Combo Valve Less  
 Kick Out & Neutral Spring Return  
 V = Air Shift Less Installation Kit



\*Available assembly 3 and 5 only  
 \*\*Includes mounting parts

## Series Specifications Chart – 230 Series

	230*A,B,D,K & Q w/Pressure Lube	230*A,B,D,K & Q w/Standard Lube
Standard Output Shaft Size	1-1/4" Round w/key	
Intermittent Torque Rating (Lbs. ft.)	300	250
Intermittent Torque Rating (N.m.)	407	339
Horsepower Rating for Intermittent Service		
At 500 R.P.M. of Output Shaft (HP)	29	24
At 1000 R.P.M. of Output Shaft (HP)	57	48
At 500 R.P.M. of Output Shaft (Kw)	21	18
At 1000 R.P.M. of Output Shaft (Kw)	43	36
Approximate Weight:	49 lbs. [22 kg]	

