

Chelsea® 267 Series

Constant Mesh P.T.O. for Allison 3000 and 4000 Series Transmissions



Overview:

Quality knows quality, that's why Allison chose Chelsea to join their engineers in developing P.T.O.s specifically for the Allison World Transmissions. The versatile 267 Series is a constant mesh P.T.O. that exceeds the torque capacity of a 6-Bolt P.T.O. while offering the tighter sealing of a 10-Bolt pattern. The 267 Series is an excellent choice for variable displacement piston pumps used in refuse and snow and ice removal applications. It is available in five speed ratios and multiple output types, including Chelsea's popular 360° rotatable flange. The 267 Series also features the SuperTorque™ option which provides up to 20% more torque capacity than a standard 267 Series.

- Refuse
- Aerial
- Snow & Ice Removal
- Fire and Rescue

Contact Information:

Parker Hannifin Corporation
Chelsea Products Division
8225 Hacks Cross Road
Olive Branch, MS 38654 USA

Phone: 1-888-PH4-TRUK
(1-888-744-8785)
Fax: 1-662-890-5379
chelseacustserv@parker.com

www.parker.com/chelsea



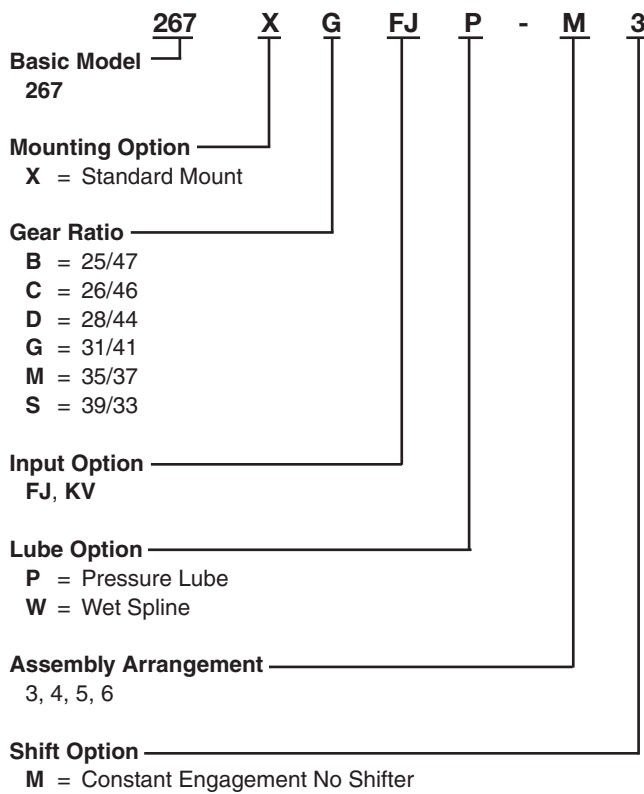
Product Features and Benefits:

- Constant Mesh (non-shiftable) P.T.O. that is ideal for applications requiring continuous power
- Five (5) speed ratios and twenty eight (28) output options
- SuperTorque™ gears available for 20% higher intermittent torque ratings
- Wet Spline Design virtually eliminates spline fretting
- Increase shaft life by a factor of ten
- No Backlash to set
- Two Year Warranty



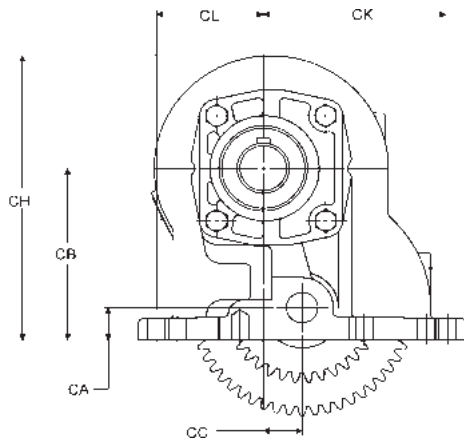
ENGINEERING YOUR SUCCESS.

Model Number Designator



Output Option

- XD** = 1-1/4" Rd Standard Shaft
- XE** = S.A.E. "A" 2 or 4-Bolt 5/8" - 9T
- * **XK** = S.A.E. "B" 2 or 4-Bolt 7/8" - 13T
- XQ** = S.A.E. "B" 2 or 4-Bolt 7/8" - 13T
- XR** = Chelsea Special 7/8" - 13T
- XX** = Tapered Output Shaft
- XY** = DIN 5462 8T
- AK** = S.A.E. "B" 2-Bolt 7/8" - 13T
- ** **AF** = S.A.E. "BB" 2 or 4-Bolt 1" - 15T
- AZ** = S.A.E. "B" 4-Bolt 1-1/4" - 14T
- RA** = Rotatable S.A.E. "B" 2-Bolt 7/8" - 13T
- RB** = Rotatable S.A.E. "B" 4-Bolt 7/8" - 13T
- RC** = Rotatable S.A.E. "A" 2-Bolt 5/8" - 9T
- RE** = Rotatable S.A.E. "BB" 4-Bolt 1" - 15T
- RF** = Rotatable S.A.E. "BB" 2-Bolt 1" - 15T
- ** **RY** = Rotatable DIN 5462 8T
- GA** = Greaseable Rot. S.A.E. "B" 2-Bolt 7/8" - 13T
- GB** = Greaseable Rot. S.A.E. "B" 4-Bolt 7/8" - 13T
- GF** = Greaseable S.A.E. "BB" 2 or 4-Bolt 1" - 15T
- GH** = Greaseable Rot. S.A.E. "BB" 2-Bolt 1" - 15T
- GK** = Greaseable S.A.E. "B" 2 or 4-Bolt 7/8" - 13T
- GQ** = Greaseable S.A.E. "B" 2 or 4-Bolt 7/8" - 13T
- GR** = Greaseable Chelsea Special 7/8" - 13T
- GY** = Greaseable DIN 5462 8T
- GZ** = Greaseable S.A.E. "B" 4-Bolt 1-1/4" - 14T
- PF** = Rotatable S.A.E. "B" 2-Bolt 1" - 15T for Parker Sculptured Pump
- PA** = Rotatable S.A.E. "B" 2-Bolt 7/8" - 13T for Parker Sculpture Pump



* Available Assembly 5 Only

** Must be Purchased with Wetspline (W) Lube Option

Specifications Chart – 267 Series

	267*B	267*G	267*S	267SB	267SG	267SS
				SuperTorque™		
Standard Output Shaft Size	1-1/4"					
Intermittent Torque Rating (Lbs. ft.)	335	300	250	402	360	265
Intermittent Torque Rating (N.m.)	454	407	339	545	488	359
Horsepower Rating for Intermittent Service						
At 500 R.P.M. of Output Shaft (HP)	32	29	24	38	34	25
At 1000 R.P.M. of Output Shaft (HP)	64	57	48	77	69	50
At 500 R.P.M. of Output Shaft (Kw)	24	21	18	29	26	19
At 1000 R.P.M. of Output Shaft (Kw)	48	43	36	57	51	38
Approximate Weight:	35 lbs. [16 kg]					