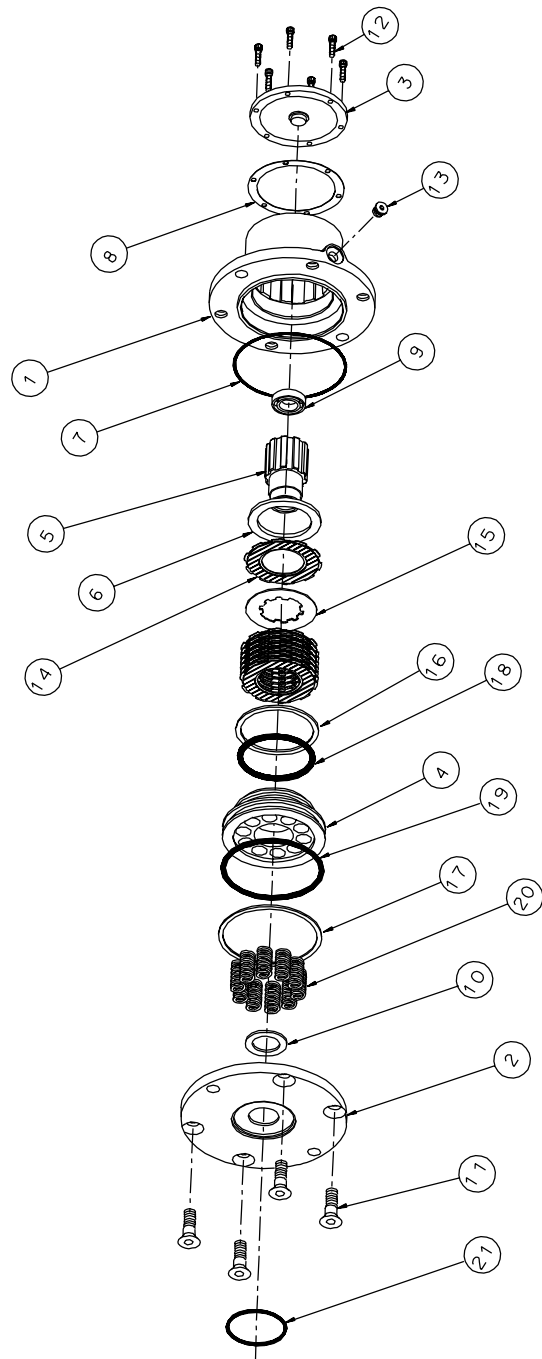


THIS DRAWING IS EFFECTIVE  
 FROM: S/N 14926, SEPT. 1989  
 TO: CURRENT  
 REF: X93-DE

		MODELS				PART NO.	DESCRIPTION
		93-110		93-120			
HT	EM	QTY 931-NF	QTY 931-NR	QTY 932-NF	QTY 932-NR		
1	-	-	-	1	1	93-004-0894	CASE - 93-120
1	1	1	-	-	-	93-004-0884	CASE - 93-110
2	1	-	1	-	-	93-004-1113	COVER - NF
2	-	1	-	1	-	93-004-1123	COVER - NR
3	1	1	1	1	1	93-003-1061	END CAP
4	1	1	1	1	1	90-004-1182	PISTON
5	-	-	1	1	-	93-004-1103	SHAFT- 13T (93-120)
5	1	1	-	-	-	93-004-1083	SHAFT- 13T (93-110)
6	*	*	*	*	*	90-004-1031	SPACER
7	1	1	1	1	1	01-402-0580	O-RING SEAL
8	1	1	1	1	1	90-004-1111	BASE GASKET
9	1	1	1	1	1	01-100-0200	BEARING
10	1	1	1	1	1	01-112-0290	THRUST BEARING
11	4	-	4	-	-	01-150-1390	HHCS (1/2-13 X 1)
11	-	4	-	4	-	01-150-1440	FH SCS (1/2-13 X 1)
12	6	6	6	6	6	01-150-1030	SHCS (#10-24 X 3/4)
13	1	1	1	1	1	01-208-0020	HOLLOW HEX PLUG
14	*	*	*	*	*	01-288-0010	FRICITION DISC
15	*	*	*	*	*	01-288-0020	SEPARATOR PLATE
16	1	1	1	1	1	01-400-0120	BACK-UP RING
17	1	1	1	1	1	01-400-0140	BACK-UP RING
18	1	1	1	1	1	01-402-0450	O-RING
19	1	1	1	1	1	01-402-0470	O-RING
20	*	*	*	*	*	01-261-0290	SPRING
21	1	1	1	1	1	01-402-0590	O-RING-MOTOR MOUNT



## REPAIR KITS FOR SERIES 93 BRAKES

FRICITION DISC KIT	93-016-1211	
01-288-0010	FRICITION PLATES (8)	
SEPARATOR PLATE KIT	93-016-1221	
01-288-0020	SEPARATOR PLATE (11)	
SEAL KIT	93-016-1181	
01-400-0120	BACK-UP RING, PISTON (1)	
01-400-0140	BACK-UP RING, PISTON (1)	
01-402-0450	O-RING, PISTON (1)	
01-402-0470	O-RING, PISTON (1)	
01-402-0580	O-RING, CASE SEAL (1)	
01-402-0590	O-RING, MOTOR PILOT (1)	
90-004-1101	GASKET, COVER (1)	
90-004-1111	GASKET, BASE (1)	
90-004-1171	GASKET, MOTOR (1)	
MASTER REBUILD KIT	93-015-1311	
93-016-1211	FRICITION DISC KIT (1)	
93-016-1181	SEAL KIT (1)	
01-100-0120	BEARING (1)	

Due to the many combinations of torques and release pressures available for the 93-110, it is impossible to detail each style and supply a repair kit for each individual model. The information listed in this manual is representative of all 93-110 brakes. The repair kits listed below will work with all combinations of torque vs. release pressure, input mountings and friction plates. It is entirely possible to have "extra" parts left over from the repair kits after you have completed the repair or maintenance. If you are not sure about what is required for your brake and its configuration please contact Eskridge.

\* QUANTITIES OF FRICITION DISCS, SEPARATOR PLATES, SPACERS AND SPRINGS MAY VARY DEPENDING ON CUSTOMERS SPECIFIC TORQUE RATING AND RELEASE PRESSURE REQUIREMENTS. 93-120 BRAKES REQUIRING A FULL COMPLEMENT OF FRICITION DISCS (QTY 10) AND SEPARATOR PLATES (QTY 9) WILL NOT INCLUDE ANY SPACERS (ITEM NO. 6). 93-110 BRAKES REQUIRING A FULL COMPLEMENT OF FRICITION DISCS (QTY 7) AND SEPARATOR PLATES (QTY 6) WILL NOT INCLUDE ANY SPACERS (ITEM NO. 6). ONE SPACER TAKES THE PLACE OF ONE FRICITION DISC AND ONE SEPARATOR PLATE.

\*\*QUANTITY OF SPRINGS (10 MAX) DETERMINES BRAKE HOLDING TORQUE AND RELEASE PRESSURE.